

Robustness and accuracy in the application.



The robust helical gearboxes are characterized by high permissible radial forces, closely stepped transmission ratios and a low backlash.

They are available in a 2-stage, 3-stage and 4-stage design with a torque of up to 14,000 Nm and a ratio of up to $i = 3,700$.

Highlights

- Energy efficiency classes for an economic and future-proof use in many applications and countries
- Finely scaled sizes and torques for optimum machine adaptations
- Standardized shaft and flange dimensions for easy machine integration
- Efficient thanks to a high degree of efficiency of 94% or better

Helical geared motors are a compact, powerful drive unit. Numerous options at the input and output ends ensure that the drive can be easily and precisely adjusted to suit your application.

Types m550 and MF

- With IE2 and IE3 three-phase AC motors according to the ErP Directive: Power range 0.12 ... 55 kW
- With inverter-optimized MF three-phase AC motors: Power range 0.55 ... 22 kW

Types Lenze Smart Motor

- With m300 Lenze Smart Motors: Rated torque of 1.75 Nm and 5 Nm

Types MCS, m850 and MCA

- With synchronous servo motors and asynchronous servo motors: Power range: 0.25 ... 38.4 kW



m550



Lenze Smart Motor



MCS



m850



MCA

Matched to your ambient conditions

Gearboxes with	Three-phase AC motors	Lenze Smart Motor	Servo motors
Degree of protection (EN 60529)	IP55		IP54/IP65
Energy efficiency class	IE2, IE3 or inverter-optimized		
Approvals	cURus, EAC, CCC and UkrSepro		
Storage temperature	-30 ... 60 °C		
Operating temperature	-20 ... 40 °C		

Surface and corrosion protection

Gearboxes with	Three-phase AC motors, Lenze Smart Motors, servo motors
OKS-G (primed)	1K priming coat
OKS-S (small)	2K-PUR top coat
OKS-M (medium)	1K priming coat, 2K-PUR top coat
OKS-L (large)	2K-EP priming coat, 2K-PUR top coat

Technical data

Gearbox size		g500-H45	g500-H100	g500-H140	g500-H210	g500-H320	g500-H450	g500-H600	g500-H850	g500-H1500	g500-H3000	g500-H5000	g500-H8000	g500-H14000
Rated torque	Nm	45	100	140	210	320	450	600	850	1,500	3,000	5,000	8,000	13,000
Ratio range		3 - 60	3 - 600	3 - 750	3 - 2,900	3 - 3,200	3 - 3,700	3 - 2,500	3 - 2,300	4 - 3,100	4 - 2,800	5 - 370	4 - 330	5 - 330
Solid shaft dimensions	mm	14 x 28 20 x 40	20 x 40	25 x 50	25 x 50	30 x 60	30 x 60 35 x 70	35 x 70 40 x 80	40 x 80	50 x 100	60 x 120	70 x 140	90 x 170	110 x 210
Flange dimensions	mm	120 140 160	120 140 160	120 140 160	120 140 160 200	160 200	160 200 250	200 250	250 300	250 300 350	300 350 450	350 450	450 550	450 550

Robust and precise in application.



The robust helical gearboxes excel through their high permissible radial forces, finely graduated speed-reduction ratios and low backlash.

They are available in 1-stage, 2-stage and 3-stage versions with torque of to 5,920 Nm and a ratio of up to $i=435$.

Models

- 1-stage, 2-stage and 3-stage gearboxes
- Solid shaft with keyway
- Foot or flange mounting

Technical data

Gearbox size		GST03	GST04	GST05	GST06	GST07	GST09	GST11	GST14
Max. torque	[Nm]	45	73	172	375	710	1623	2848	5920
Ratio range		2.6 - 59	1.6 - 45	1.6 - 335	2 - 435	2 - 417	2 - 412	4 - 412	4 - 412
Dimensions									
Solid shaft	[mm]	14 x 28 20 x 40	16 x 32 20 x 40	20 x 40 25 x 50	25 x 50 30 x 60	30 x 60 40 x 80	40 x 80 50 x 100	60 x 120	80 x 160
Flange	[mm]	120 140 160	120 140 160	120 140 160 200	160 200	200 250	250 300	300 350	350 400

GST helical geared motors

Gearboxes



When combined with three-phase AC motors and servo motors, our helical gearboxes form a compact yet powerful drive unit. Numerous drive-end and output-end options allow precise matching of the drive to your specific application.

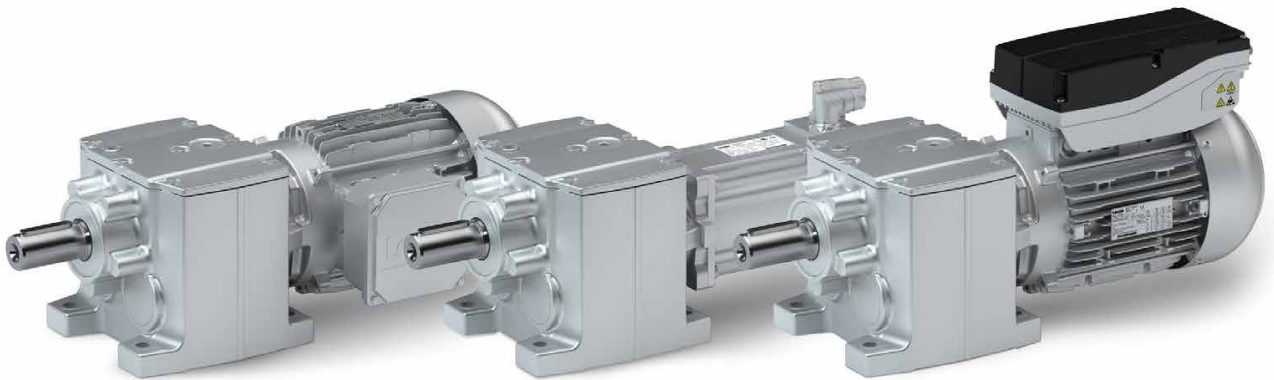
Models

- With three-phase AC motors in line with the ErP Directive in the power range from 0.06 to 45 kW
- With servo motors in the power range from 0.25 to 20.3 kW
- As a Drive Package with the decentralised Inverter Drives 8400 motec, covering the power range up to 7.5 kW.

Matched to your environmental conditions

Gearboxes with	Three-phase AC motors	Servo motors
Degree of protection		
EN 60529	IP55	IP54 / IP65
Approvals	cURus, EAC, CCC and UkrSepro	
Climatic conditions		
Storage temperature	-30°C to +60°C	
Operating temperature	-20°C to +40°C	
Surface and corrosion protection		
OKS-G (primed)	1K primer coat	
OKS-S (small)	2K-PUR top coat	
OKS-M (medium)	1K primer coat 2K-PUR top coat	
OKS-L (large)	2K-EP primer coat 2K-PUR top coat	

Robustness and accuracy in the application.



The robust helical gearboxes are characterized by high permissible radial forces, closely stepped transmission ratios and a low backlash.

They are available in a 2-stage, 3-stage and 4-stage design with a torque of up to 14,000 Nm and a ratio of up to $i = 3,700$.

Highlights

- Energy efficiency classes for an economic and future-proof use in many applications and countries
- Finely scaled sizes and torques for optimum machine adaptations
- Standardized shaft and flange dimensions for easy machine integration
- Efficient thanks to a high degree of efficiency of 94% or better

Helical geared motors are a compact, powerful drive unit. Numerous options at the input and output ends ensure that the drive can be easily and precisely adjusted to suit your application.

Types m550 and MF

- With IE2 and IE3 three-phase AC motors according to the ErP Directive: Power range 0.12 ... 55 kW
- With inverter-optimized MF three-phase AC motors: Power range 0.55 ... 22 kW

Types Lenze Smart Motor

- With m300 Lenze Smart Motors: Rated torque of 1.75 Nm and 5 Nm

Types MCS, m850 and MCA

- With synchronous servo motors and asynchronous servo motors: Power range: 0.25 ... 38.4 kW



m550



Lenze Smart Motor



MCS



m850



MCA

Matched to your ambient conditions

Gearboxes with	Three-phase AC motors	Lenze Smart Motor	Servo motors
Degree of protection (EN 60529)	IP55		IP54/IP65
Energy efficiency class	IE2, IE3 or inverter-optimized		
Approvals	cURus, EAC, CCC and UkrSepro		
Storage temperature	-30 ... 60 °C		
Operating temperature	-20 ... 40 °C		

Surface and corrosion protection

Gearboxes with	Three-phase AC motors, Lenze Smart Motors, servo motors
OKS-G (primed)	1K priming coat
OKS-S (small)	2K-PUR top coat
OKS-M (medium)	1K priming coat, 2K-PUR top coat
OKS-L (large)	2K-EP priming coat, 2K-PUR top coat

Technical data

Gearbox size		g500-H45	g500-H100	g500-H140	g500-H210	g500-H320	g500-H450	g500-H600	g500-H850	g500-H1500	g500-H3000	g500-H5000	g500-H8000	g500-H14000
Rated torque	Nm	45	100	140	210	320	450	600	850	1,500	3,000	5,000	8,000	13,000
Ratio range		3 - 60	3 - 600	3 - 750	3 - 2,900	3 - 3,200	3 - 3,700	3 - 2,500	3 - 2,300	4 - 3,100	4 - 2,800	5 - 370	4 - 330	5 - 330
Solid shaft dimensions	mm	14 x 28 20 x 40	20 x 40	25 x 50	25 x 50	30 x 60	30 x 60 35 x 70	35 x 70 40 x 80	40 x 80	50 x 100	60 x 120	70 x 140	90 x 170	110 x 210
Flange dimensions	mm	120 140 160	120 140 160	120 140 160	120 140 160 200	160 200	160 200 250	200 250	250 300	250 300 350	300 350 450	350 450	450 550	450 550