

LPC-LPCD WITH E-drive

IN-LINE ELECTRONIC ELECTRIC PUMPS + INVERTER

in cast iron

In-line centrifugal electric pumps, single and twin, with cast iron hydraulic equipment and inverter on-board motor.

APPLICATIONS

- Fluid handling for circulation, heating and air conditioning system, both civil and industrial
- Hot water and low pressure fluid handling in general
- Cooling and air conditioning systems

TECHNICAL FEATURES

- Versatile
- Silent running
- Energy and cost savings
- Extended system service life
- Lower stress on wear parts (mechanical seals, bearings, etc.) and hence less maintenance

PUMP TECHNICAL DATA

- Maximum operating pressure: 10 bar
- Maximum fluid temperature: -10°C to $+110^{\circ}\text{C}$
- Maximum ambient temperature: $+40^{\circ}\text{C}$ (check with us for higher values)
- Maximum fluid viscosity: 38 cSt
- Flanges: PN10 for LPC 32-100 and LPC 40-100, UNI2223-29 PN16 for the rest of the range

MOTOR TECHNICAL DATA

- High efficiency motors IE2 for power ratings 0.75kW to 5.5kW
IE3 for power ratings above 7.5kW
- 2 and 4 poles self-ventilating asynchronous motors
- Insulation class F
- Protection rating IP 55
- Three phase power 230/400V $\pm 10\%$, 50 Hz up to 4 kW, three phase power 400/690V $\pm 10\%$, 50 Hz 5.5 kW and above
- Protection to be provided by the user

E-drive TECHNICAL DATA

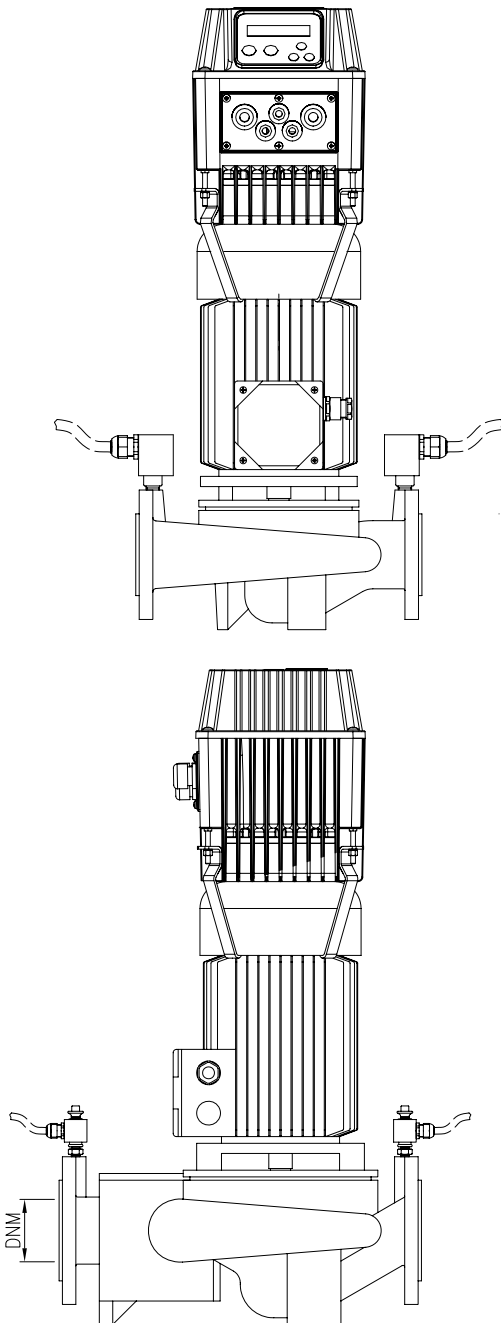
- See page 232

MATERIALS

- Pump body, gasket disk and motor mount in cast iron
- Impeller made of cast iron
- Shaft made of AISI 420 steel
- Mechanical seal made of SiC/Carbon/EPDM

ACCESSORIES (on request)

- Kit of galvanised counterflanges
- Blind flanges



LPC-LPCD WITH E-drive

IN-LINE ELECTRONIC ELECTRIC PUMPS + INVERTER

in cast iron

LPC(4) + E-drive

2 and 4 poles

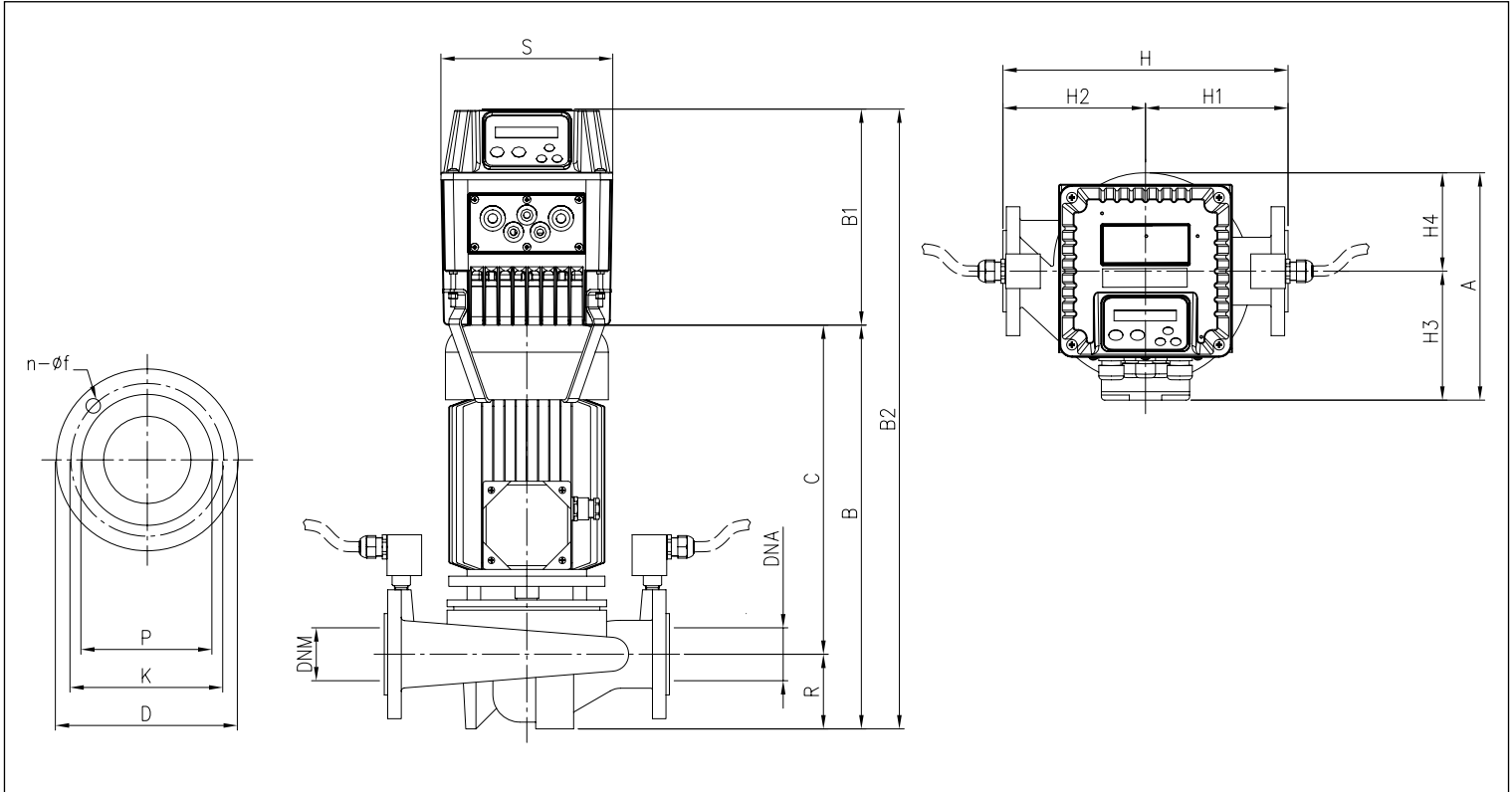


TABLE OF DIMENSIONS LPC + E-drive

2 Poles

Model	DNA	DNM	n	f	P	K	D	H	Dimensions [mm]				R	A	B	B1	B2	S	C	Weight [kg] Pump + E-drive
									H1	H2	H3	H4								
LPC 32-100/0.37 EDT (EDM)	DN32	DN32	4	14	70	90	120	220	110	110	112	65	65	177	379	228	607	181	314	16.5
LPC 40-100/0.55 EDT (EDM)	DN40	DN40	4	14	80	100	130	260	140	120	112	77	90	189	407	228	635	181	317	20.5
LPC/E 40-100/0.75 EDT (EDM)	DN40	DN40	4	14	80	100	130	260	140	120	129	77	90	206	424	228	652	181	334	22.5
LPC/E 40-125/0.75 EDT (EDM)	DN40	DN40	4	18	88	110	150	300	160	140	129	93	100	222	446	228	674	181	346	30.5
LPC/E 40-125/1.1 EDT (EDM)	DN40	DN40	4	18	88	110	150	300	160	140	129	93	100	222	446	228	674	181	346	31.5
LPC/E 40-125/1.5 EDT (EDM)	DN40	DN40	4	18	88	110	150	300	160	140	129	93	100	222	446	228	674	181	346	33.5
LPC/E 40-160/2.2 EDT	DN40	DN40	4	18	88	110	150	320	170	150	138	108	100	246	481	228	709	181	381	35.5
LPC/E 40-160/3R EDT	DN40	DN40	4	18	88	110	150	320	170	150	145	108	100	253	520	228	748	181	420	44.5
LPC/E 40-160/3 EDT	DN40	DN40	4	18	88	110	150	320	170	150	145	108	100	253	520	228	748	181	420	46.5
LPC/E 40-200/4 EDT	DN40	DN40	4	18	88	110	150	380	200	180	145	127	100	272	520	228	748	181	420	54.5
LPC/E 40-200/5.5 EDT	DN40	DN40	4	18	88	110	150	380	200	180	160	127	100	287	542	180	722	260	442	64.0
LPC/I 40-200/7.5 EDT	DN40	DN40	4	18	88	110	150	380	200	180	160	127	100	287	564	180	744	260	464	67.0
LPC/E 50-125/1.5 EDT (EDM)	DN50	DN50	4	18	102	125	165	322	182	140	129	103	110	232	456	228	684	181	346	32.5
LPC/E 50-125/2.2 EDT	DN50	DN50	4	18	102	125	165	322	182	140	138	103	110	241	491	228	719	181	381	34.5
LPC/E 50-125/3 EDT	DN50	DN50	4	18	102	125	165	322	182	140	145	103	110	248	530	228	758	181	420	41.5
LPC/E 50-160/3 EDT	DN50	DN50	4	18	102	125	165	340	180	160	145	113	110	258	530	228	758	181	420	41.5
LPC/E 50-160/4 EDT	DN50	DN50	4	18	102	125	165	340	180	160	145	113	110	258	530	228	758	181	420	46.5
LPC/E 50-200/5.5 EDT	DN50	DN50	4	18	102	125	165	400	220	180	160	131	110	291	552	180	732	260	442	65.0
LPC/I 50-200/7.5R EDT	DN50	DN50	4	18	102	125	165	400	220	180	160	131	110	291	574	180	754	260	464	68.0
LPC/I 50-200/7.5 EDT	DN50	DN50	4	18	102	125	165	400	220	180	160	131	110	291	574	180	754	260	464	68.0
LPC/E 65-125/2.2 EDT	DN65	DN65	4	18	122	145	185	360	205	155	138	108	140	246	521	228	749	181	381	40.5
LPC/E 65-125/3 EDT	DN65	DN65	4	18	122	145	185	360	205	155	145	108	140	253	560	228	788	181	420	47.5
LPC/E 65-125/4 EDT	DN65	DN65	4	18	122	145	185	360	205	155	145	108	140	253	560	228	788	181	420	48.5
LPC/E 65-160/5.5 EDT	DN65	DN65	4	18	122	145	185	400	220	180	160	122	140	282	582	180	762	260	442	63.0
LPC/I 65-160/7.5 EDT	DN65	DN65	4	18	122	145	185	400	220	180	160	122	140	282	604	180	784	260	464	65.0
LPC/I 65-200/11 EDT	DN65	DN65	4	18	122	145	185	440	240	200	194	136	140	330	679	180	859	260	539	90.0
LPC/I 80-160/11 EDT	DN80	DN80	8	18	138	160	200	440	240	200	194	131	160	325	719	180	899	260	559	92.0
LPC/I 100-160/11 EDT	DN100	DN100	8	18	158	180	220	525	300	225	194	136	190	330	800	180	980	260	610	96.0

LPC-LPCD WITH E-drive

IN-LINE ELECTRONIC ELECTRIC PUMPS + INVERTER

in cast iron

TABLE OF DIMENSIONS LPC4 + E-drive

4 Poles

Model	Dimensions [mm]																			Weight [kg] Pump + E-drive
	DNA	DNM	n	f	P	K	D	H	H1	H2	H3	H4	R	A	B	B1	B2	S	C	
LPC4 32-100/0.25 EDT (EDM)	DN32	DN32	4	14	70	90	120	220	110	110	112	65	65	177	379	228	607	181	314	16.5
LPC4 40-100/0.25 EDT (EDM)	DN40	DN40	4	14	80	100	130	260	140	120	112	77	90	189	407	228	635	181	317	20.5
LPC4 40-125/0.25R EDT (EDM)	DN40	DN40	4	18	88	110	150	300	160	140	112	93	100	205	429	228	657	181	329	24.5
LPC4 40-125/0.25 EDT (EDM)	DN40	DN40	4	18	88	110	150	300	160	140	112	93	100	205	429	228	657	181	329	24.5
LPC4 40-160/0.37 EDT (EDM)	DN40	DN40	4	18	88	110	150	320	170	150	112	108	100	220	429	228	657	181	329	27.5
LPC4/E 40-200/0.75 EDT (EDM)	DN40	DN40	4	18	88	110	150	380	200	180	139	127	100	266	446	228	674	181	346	36.5
LPC4/E 40-200/1.1 EDT (EDM)	DN40	DN40	4	18	88	110	150	380	200	180	148	127	100	275	481	228	709	181	381	41.5
LPC4/E 40-250/1.1 EDT (EDM)	DN40	DN40	4	18	88	110	150	440	230	210	148	165	100	313	481	228	709	181	381	56.5
LPC4/E 40-250/1.5 EDT (EDM)	DN40	DN40	4	18	88	110	150	440	230	210	148	165	100	313	481	228	709	181	381	59.5
LPC4 65-125/0.25 EDT (EDM)	DN50	DN50	4	18	102	125	165	322	182	140	112	103	110	215	439	228	667	181	329	25.5
LPC4 50-125/0.37 EDT (EDM)	DN50	DN50	4	18	102	125	165	322	182	140	112	103	110	215	439	228	667	181	329	26.5
LPC4 50-160/0.55 EDT (EDM)	DN50	DN50	4	18	102	125	165	340	180	160	112	113	110	225	439	228	667	181	329	29.5
LPC4/E 50-200/1.1R EDT (EDM)	DN50	DN50	4	18	102	125	165	400	220	180	148	131	110	279	491	228	719	181	381	44.5
LPC4/E 50-200/1.1 EDT (EDM)	DN50	DN50	4	18	102	125	165	400	220	180	148	131	110	279	491	228	719	181	381	44.5
LPC4/E 50-250/1.5 EDT (EDM)	DN50	DN50	4	18	102	125	165	440	230	210	148	165	125	313	506	228	734	181	381	57.5
LPC4/E 50-250/2.2 EDT	DN50	DN50	4	18	102	125	165	440	230	210	155	165	125	320	545	228	773	181	420	61.5
LPC4 65-125/0.37 EDT (EDM)	DN65	DN65	4	18	122	145	185	360	205	155	112	108	140	220	469	228	697	181	329	29.5
LPC4 65-125/0.55 EDT (EDM)	DN65	DN65	4	18	122	145	185	360	205	155	112	108	140	220	469	228	697	181	329	30.5
LPC4/E 65-160/0.75 EDT (EDM)	DN65	DN65	4	18	122	145	185	400	220	180	139	122	140	261	486	228	714	181	346	38.5
LPC4/E 65-160/1.1 EDT (EDM)	DN65	DN65	4	18	122	145	185	400	220	180	148	122	140	270	521	228	749	181	381	43.5
LPC4/E 65-200/1.1 EDT (EDM)	DN65	DN65	4	18	122	145	185	440	240	200	148	136	140	284	521	228	749	181	381	45.5
LPC4/E 65-200/1.5 EDT (EDM)	DN65	DN65	4	18	122	145	185	440	240	200	148	136	140	284	521	228	749	181	381	46.5
LPC4/E 65-250/2.2 EDT	DN65	DN65	4	18	122	145	185	475	250	225	155	165	140	320	560	228	788	181	420	71.5
LPC4/E 65-250/3 EDT	DN65	DN65	4	18	122	145	185	475	250	225	155	165	140	320	594	228	822	181	454	72.5
LPC4/E 80-160/0.75 EDT (EDM)	DN80	DN80	8	18	138	160	200	440	240	200	139	131	160	270	506	228	734	181	346	55.5
LPC4/E 80-160/1.1R EDT (EDM)	DN80	DN80	8	18	138	160	200	440	240	200	148	131	160	279	541	228	769	181	381	61.5
LPC4/E 80-160/1.1 EDT (EDM)	DN80	DN80	8	18	138	160	200	440	240	200	148	131	160	279	541	228	769	181	381	45.5
LPC4/E 80-160/1.5 EDT (EDM)	DN80	DN80	8	18	138	160	200	440	240	200	148	131	160	279	541	228	769	181	381	46.5
LPC4/E 80-200/2.2 EDT	DN80	DN80	8	18	138	160	200	500	275	225	155	146	160	301	580	228	808	181	420	56.5
LPC4/E 80-200/3 EDT	DN80	DN80	8	18	138	160	200	500	275	210	155	146	160	301	614	228	842	181	454	63.5
LPC4/E 80-250/4 EDT	DN80	DN80	8	18	138	160	200	530	280	250	171	168	160	339	614	228	842	181	454	87.5
LPC4/E 80-250/5.5 EDT	DN80	DN80	8	18	138	160	200	530	280	250	195	168	160	363	651	228	879	181	491	114.0
LPC4/E 100-160/1.5 EDT (EDM)	DN100	DN100	8	18	158	180	220	525	300	225	148	136	190	284	571	228	799	181	381	50.5
LPC4/E 100-160/2.2 EDT	DN100	DN100	8	18	158	180	220	525	300	225	155	136	190	291	610	228	838	181	420	55.5
LPC4/E 100-200/3 EDT	DN100	DN100	8	18	158	180	220	550	300	250	155	156	190	311	658	228	886	181	468	72.5
LPC4/E 100-200/4 EDT	DN100	DN100	8	18	158	180	220	550	300	250	171	156	190	327	644	228	872	181	454	76.5
LPC4/E 100-250/5.5 EDT	DN100	DN100	8	18	158	180	220	600	320	280	195	176	190	371	701	180	881	260	511	116.0
LPC4/I 100-250/7.5 EDT	DN100	DN100	8	18	158	180	220	600	320	280	195	176	190	371	741	180	921	260	551	126.0
LPC4/E 125-250/5.5R EDT	DN125	DN125	8	18	188	210	250	620	340	280	195	195	195	390	706	180	886	260	511	152.0
LPC4/E 125-250/5.5 EDT	DN125	DN125	8	18	188	210	250	620	340	280	195	195	195	390	706	180	886	260	511	152.0
LPC4/I 125-250/7.5 EDT	DN125	DN125	8	18	188	210	250	620	340	280	195	195	195	390	746	180	926	260	551	155.0
LPC4/I 125-250/11 EDT	DN125	DN125	8	18	188	210	250	620	340	280	238	195	195	433	861	180	1041	260	666	195.0
LPC4/I 150-250/7.5 EDT	DN150	DN150	8	22	212	240	285	700	370	330	195	210	220	405	802	180	982	260	582	174.0
LPC4/I 150-250/11R EDT	DN150	DN150	8	22	212	240	285	700	370	330	195	210	220	405	895	180	1075	260	675	203.0
LPC4/I 150-250/11 EDT	DN150	DN150	8	22	212	240	285	700	370	330	195	210	220	405	895	180	1075	260	675	215.0

The contents of this publication should not be regarded as binding. EBARA Pumps Europe S.p.A. reserves the right to effect any modification it deems necessary, without prior notice.

LPC-LPCD WITH E-drive

IN-LINE ELECTRONIC ELECTRIC PUMPS + INVERTER

in cast iron

LPCD(4) + E-drive

2 and 4 poles

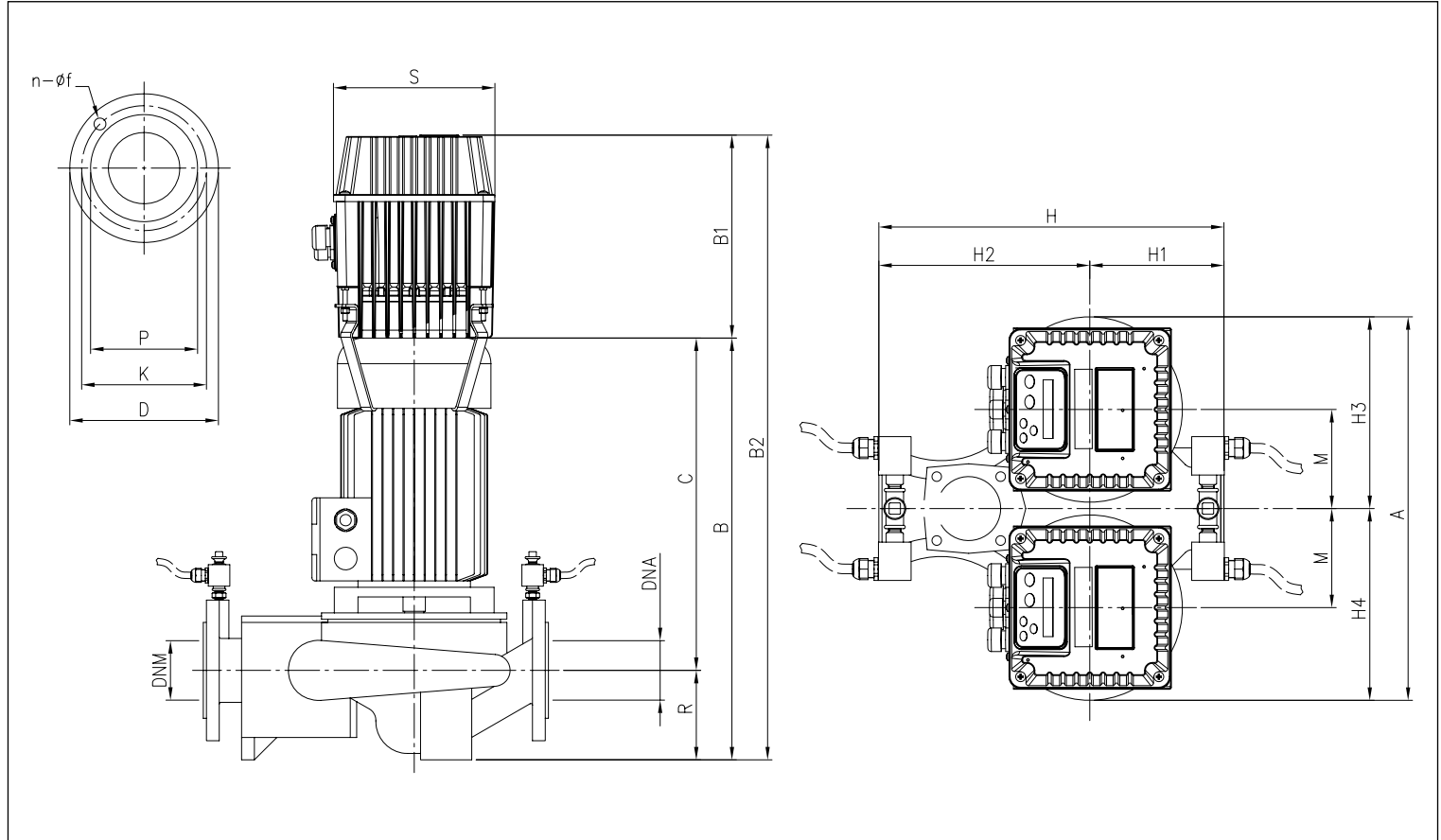


TABLE OF DIMENSIONS LPCD + E-drive

2 Poles

Model	Dimensions [mm]																				Weight [kg] Pump + E-drive
	DNA	DNM	n	f	P	K	D	H	H1	H2	H3	H4	M	R	A	B	B1	B2	S	C	
LPCD 40-125/0.75 R EDT (EDM)	DN40	DN40	4	18	88	110	150	340	130	210	197	200	100	100	397	446	228	674	180	346	64.0
LPCD/E 40-125/0.75 EDT (EDM)	DN40	DN40	4	18	88	110	150	340	130	210	197	200	100	100	397	446	228	697	180	346	64.0
LPCD/E 40-125/1.1 EDT (EDM)	DN40	DN40	4	18	88	110	150	340	130	210	197	200	100	100	397	446	228	697	180	346	66.0
LPCD/E 40-125/1.5 EDT (EDM)	DN40	DN40	4	18	88	110	150	340	130	210	197	200	100	100	397	446	228	742	180	346	68.0
LPCD/E 50-125/1.5 EDT (EDM)	DN50	DN50	4	18	102	125	165	365	145	220	210	217	105	110	427	456	228	752	180	346	70.0
LPCD/E 50-125/2.2 EDT	DN50	DN50	4	18	102	125	165	365	145	220	210	217	105	110	427	491	228	752	180	381	73.0
LPCD/E 50-125/3 EDT	DN50	DN50	4	18	102	125	165	365	145	220	210	217	105	110	427	530	228	792	180	420	86.0
LPCD/E 50-160/3 EDT	DN50	DN50	4	18	102	125	165	410	170	240	235	245	120	110	480	530	228	792	180	420	87.0
LPCD/E 50-160/4 EDT	DN50	DN50	4	18	102	125	165	410	170	240	235	245	120	110	480	530	228	812	180	420	95.0
LPCD/E 65-160/3 EDT	DN65	DN65	4	18	122	145	185	450	180	270	268	275	140	130	543	550	228	812	180	420	101.0
LPCD/E 65-160/4 EDT	DN65	DN65	4	18	122	145	185	450	180	270	268	275	140	130	543	550	228	832	180	420	110.0
LPCD/E 65-160/5.5 EDT	DN65	DN65	4	18	122	145	185	450	180	270	268	275	140	130	543	572	180	825	260	442	126.0
LPCD/I 65-160/7.5 EDT	DN65	DN65	4	18	122	145	185	450	180	270	268	275	140	130	543	594	180	825	260	464	132.0
LPCD/I 80-160/7.5 EDT	DN80	DN80	8	18	138	160	200	510	205	305	270	280	135	150	550	614	180	845	260	464	155.0
LPCD/I 80-160/11 EDT	DN80	DN80	8	18	138	160	200	510	205	305	270	280	135	150	550	709	180	985	260	559	202.0
LPCD/I 100-200/11 EDT	DN100	DN100	8	18	158	180	220	630	240	390	345	325	165	180	670	751	180	1027	260	571	240.0

LPC-LPCD WITH E-drive

IN-LINE ELECTRONIC ELECTRIC PUMPS + INVERTER

in cast iron

TABLE OF DIMENSIONS LPCD4 + E-drive

4 Poles

Model	Dimensions [mm]																				Weight [kg] Pump + E-drive
	DNA	DNM	n	f	P	K	D	H	H1	H2	H3	H4	M	R	A	B	B1	B2	S	C	
LPCD4 40-125/0.25R EDT (EDM)	DN40	DN40	4	18	88	110	150	340	130	210	197	200	100	100	397	430	228	658	181	330	53.0
LPC4 40-125/0.25 EDT (EDM)	DN40	DN40	4	18	88	110	150	340	130	210	197	200	100	100	397	430	228	658	181	330	53.0
LPC4 50-125/0.25 EDT (EDM)	DN50	DN50	4	18	102	125	165	365	145	220	197	200	105	110	397	440	228	668	181	330	55.0
LPC4 50-125/0.37 EDT (EDM)	DN50	DN50	4	18	102	125	165	365	145	220	197	200	105	110	397	440	228	668	181	330	56.0
LPC4 50-160/0.55 EDT (EDM)	DN50	DN50	4	18	102	125	165	410	170	240	235	245	120	110	480	440	228	668	181	330	62.0
LPCD4/E 65-160/0.75 EDT (EDM)	DN65	DN65	4	18	122	145	185	450	180	270	268	275	140	130	543	476	228	704	181	346	75.0
LPCD4/E 65-160/1.1 EDT (EDM)	DN65	DN65	4	18	122	145	185	450	180	270	268	275	140	130	543	511	228	739	181	381	88.0
LPCD4/E 80-160/0.75 EDT (EDM)	DN80	DN80	8	18	138	160	200	510	205	305	270	280	135	150	550	496	228	724	181	346	84.0
LPCD4/E 80-160/1.1R EDT (EDM)	DN80	DN80	8	18	138	160	200	510	205	305	270	280	135	150	550	531	228	759	181	381	95.0
LPCD4/E 80-160/1.1 EDT (EDM)	DN80	DN80	8	18	138	160	200	510	205	305	270	280	135	150	550	531	228	759	181	381	95.0
LPCD4/E 80-160/1.5 EDT (EDM)	DN80	DN80	8	18	138	160	200	510	205	305	270	280	135	150	550	531	228	759	181	381	96.0
LPCD4/E 100-200/1.5 EDT (EDM)	DN100	DN100	8	18	158	180	220	630	240	390	345	325	165	180	670	573	228	801	181	393	142.0
LPCD4/E 100-200/2.2 EDT	DN100	DN100	8	18	158	180	220	630	240	390	345	325	165	180	670	612	228	840	181	432	152.0
LPCD4/E 100-200/3 EDT	DN100	DN100	8	18	158	180	220	630	240	390	345	325	165	180	670	646	228	874	181	466	163.0
LPCD4/E 100-200/4 EDT	DN100	DN100	8	18	158	180	220	630	240	390	345	325	165	180	670	634	228	862	181	454	178.0