

Conventional Control Panels



Key Features

From 2 to 32 zones (up to 32 detectors per zone)

EN54-2 approval by LPCB

Comprehensive end-user facilities (access level 2)

Designed & built using the latest technology for optimum performance and consistently high quality

Extensive configurable facilities for the engineer via DIL switches

4 alarm circuits as standard (4 zone panel and above)

Up to 5 fully-functional repeaters - 2-wire RS485

Range of EN54 compliant power supply modules, designed to meet the specific load requirements of each size panel

Zonal one-man test feature and sounder one-man test facility

Short Circuit to fire setting for use with older type detectors

Panel inputs for class change, evacuate, silence alarms, system reset

3 open collector outputs for evacuate, buzzer active, disablement active

Auxiliary supply output - monitored fuse

Panel expansion boards for open collector, relay and alarm outputs

Optional timer clock/counter module

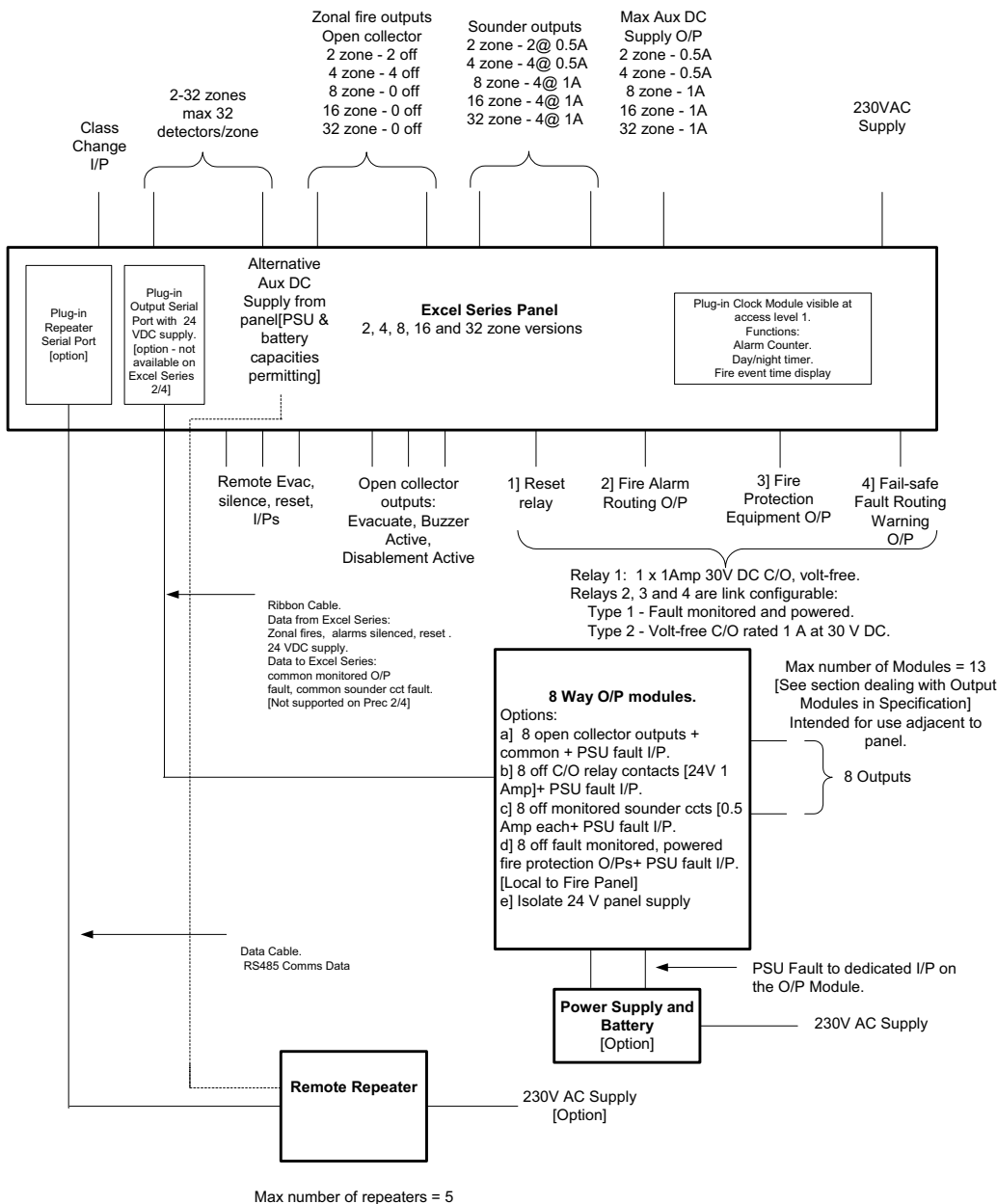
Conventional Control Panels Excel Series

Introduction

The Excel Series range of conventional control panels is a powerful yet user-friendly series of control panels. They are designed and manufactured to a high standard and is approved by the Loss Prevention Certification Board (LPCB) to EN54-2 and EN54-4. The Excel Series range has earned a reputation over many years for quality and reliability and is recognised as market leader in many countries around the world. This latest generation takes advantage of the very latest technological advancements both in terms of design and manufacturing techniques to meet the exacting requirements of the latest European standards.

Each panel in this series has extensive configuration options but is easy to install, programme and operate. This is supported by comprehensive documentation on commissioning, operation & maintenance.

The panels are designed for use with a wide range of manufacturers' detectors. A complete range of fully-flush and semi-flush bezels can be supplied for all Excel Series control panels. There is also a comprehensive range of other compatible equipment such as repeaters, relays and power supply units, available to meet customer requirements.



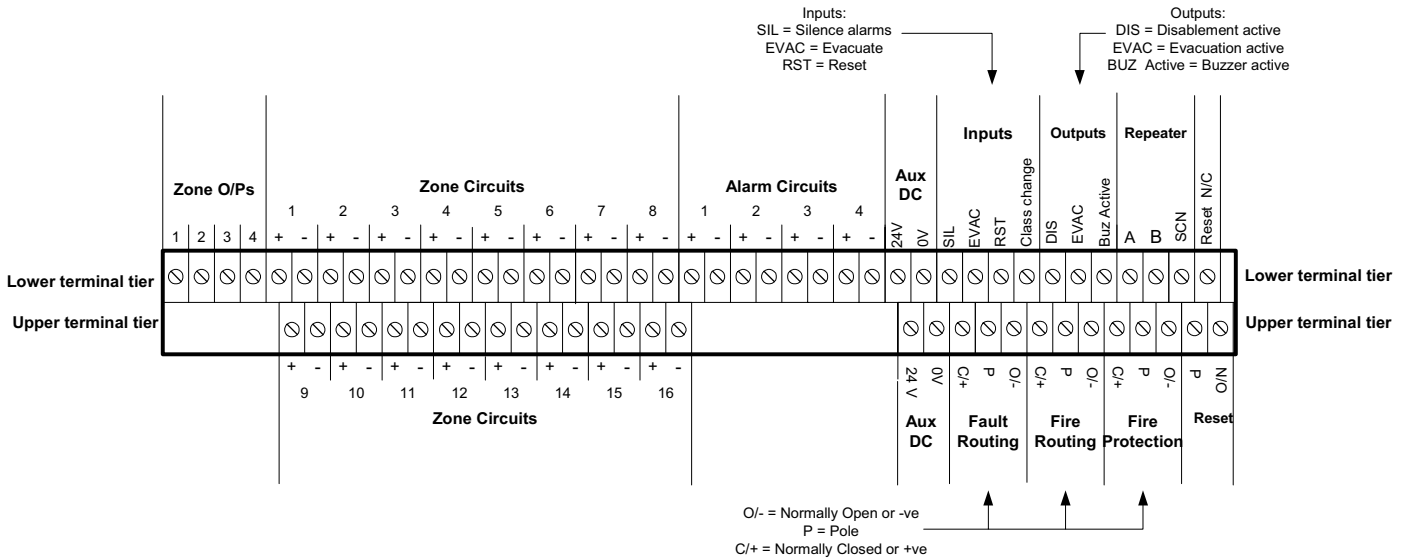
Conventional Control Panels Excel Series Facilities in Detail

Excel Series Facilities in Detail

<p>Switching regulator power supplies with temperature — compensated battery charging</p> <p>Battery disconnect</p> <p>Class change input</p> <p>Configurable detection zones</p> <p>Active fault monitoring on the detection zone wiring. [Non – Intrinsically Safe applications only]</p> <p>Selectable Zonal or General alarm sounder operation with sounders in alert or silent in adjacent zones.</p> <p>Configurable Fire Routing, Fire Protection and Fault Routing output relays</p> <p>Reset Relay</p> <p>Auxiliary 24 V DC power supply output</p> <p>Open collector outputs</p> <p>Remote inputs</p> <p>Earth Fault monitoring</p> <p>Zone/Output disablement feature</p> <p>One Man Zone Test</p> <p>One Man Sounder Test</p> <p>Configurable Delay Mode Facility</p> <p>Other configuration features</p> <p>Repeater panels</p>	<p>High efficiency voltage regulation. Battery-charging voltage automatically adjusted between 28.6 and 26.5 V DC over an ambient temperature range of –5 to +40 deg C.</p> <p>Protects the battery from permanent damage due to over discharge by automatically disconnecting it when the battery voltage falls to 19.5V.</p> <p>Operates all sounders for up to 5 seconds.</p> <p>Simple and flexible display-based configuration process, allowing detection zones to be configured as either:</p> <ul style="list-style-type: none"> o Latching/non-latching. o Delayed/non-delay. o Standard/Intrinsically Safe mode. <p>Factory configuration: Latching, non-delay, standard [non-I.S.]</p> <p>Reduces zone monitoring current and reduces the required battery capacity. Maintains total detector availability following the removal of a detector.</p> <p>Selectable via DIL switches on the motherboard. The standard sounders on the 2 and 4 zone panels can be used in General or Zonal modes. The output expansion system [available later] provides additional sounders circuits for General or Zonal use on the 8, 16 and 32 zone panels.</p> <p>Configuration links on the motherboard allow each relay to be individually selected to the EN54 powered/fault monitored mode or volt –free changeover. Factory configuration - "EN54 Mode".</p> <p>A volt-free changeover contact operating for 10 seconds on panel fire reset.</p> <p>Protected by an electronic fuse and reset by operating reset switch. Operation of the fuse is indicated on the display.</p> <ul style="list-style-type: none"> o Evacuate Active. o Buzzer Active. o Disablement Active. o Zonal fire for each zone up to zone 4. Zonal output expansion on 8-32 zone versions [availability tba]. <p>Remote evacuation. Silence alarms. Reset.</p> <p>Can be disabled via link on the motherboard.</p> <p>Each zone along with the Fire Routing, Fire Protection, Fault Routing and sounder circuits can be independently disabled/enabled.</p> <p>Each zone can be independently set to the One Man test condition. Sounders can be configured to operate briefly to confirm the fire panel has detected the test fire or the test may be configured for no sounder operation.</p> <p>Operates the sounders intermittently.</p> <p>Flexible system allowing:</p> <ul style="list-style-type: none"> o Any zone to be configured as a delay zone. o Single or two-stage delay. o 1 to 9 minute delay [for single stage or second stage of 2-stage delay]. o Selection of the output to be delayed [Fire Routing, Fire Protection, Sounders] – can be any combination. <ul style="list-style-type: none"> o "Short circuit to fire" for use with older type detectors o To prevent the Fire Protection output operating from a fire condition on a "Non-Latch" zone. o To inhibit the silencing and resetting of the panel for 3 minutes following the occurrence of a fire alarm. o To set the sounders to operate only when the panel is in the Evacuate condition. o To inhibit the resetting of the fire alarm condition until the alarm sounders have been silenced. o To disable the panel buzzer. o To select latching fault mode where all fault conditions latch until the panel is manually reset. o Restore default configuration of zones and outputs to be delayed. <p>Supporting up to 5 repeaters via RS485 comms.</p>
--	---

Conventional Control Panels Excel Series

Typical Termination Arrangement (Excel Series 16 zone)



Optional Enhancements

- 4 options for 8-way output modules (See schematic diagram)
- Semi-flush bezels
- Fully-flush bezels
- Matching cabinets to house enhancement boards and power supplies
- Matching style repeater panels (Locally and panel powered)
- Timer clock/counter module, factory set as either day/night and alarm counter or fire alarm clock display

Ordering Details

Part Number	Description
2605/100	Excel Series 2 zone panel
2605/101	Excel Series 4 zone panel
2605/102	Excel Series 8 zone panel
2605/103	Excel Series 16 zone panel
2605/104	Excel Series 32 zone panel