

# FAMCO

## هایپر صنعت



光陆电机  
GUANGLU MOTOR

# MOTOR

IE2  CE  





هشدار!

تمامی محتوا این کاتالوگ توسط هایپر صنعت فامکو ایجاد شده و هرگونه کپی برداری از آن بدون انتشار از منبع جایز نمی باشد.



## فهرست

4.....	معرفی شرکت گوانگلو
5.....	نمونه محصولات قابل عرضه
9.....	الکتروموتور سه فاز سری GL
10.....	مشخصات فنی الکتروموتور سه فاز سری GL
12.....	BEARING RULES
13.....	الکتروموتور سه فاز GE2
14.....	مشخصات ابعادی الکتروموتور گوانگلو مدل GE2
16.....	مشخصات بیرینگ GE2
17.....	الکتروموتور سه فاز مدل Y3EJ
18.....	مشخصات الکتروموتور Y3EJ
19.....	الکتروموتور سه فاز Y3D
20.....	مشخصات الکتروموتو مدل Y3D
22.....	الکتروموتور سه فاز مدل Y3
23.....	مشخصات فنی الکتروموتور Y3



## معرفی شرکت گوانگلو

شرکت گوانگلو چین در سال 1997 فعالیت خود را آغاز نمود. اکنون این شرکت با 1800 پرسنل جز بزرگترین شرکت های تولید کننده الکتروموتور در جهان است





## نمونه محصولات قابل عرضه



بر اساس استاندارد IE4

توان: 0.75 kw تا 315 kw

تعداد پل: 2-8

ولتاژ: 220 ولت تا 865 ولت

استاندارد حفاظتی IP55

بر اساس استاندارد طراحی IEC60034-30



بر اساس استاندارد IE3

توان: 0.75 kw تا 315 kw

تعداد پل: 2-8

ولتاژ: 220 ولت تا 865 ولت

استاندارد حفاظتی IP55

بر اساس استاندارد طراحی IEC60034-30



بر اساس استاندارد GE3

توان: 0.12 kw تا 18.5 kw

تعداد پل: 2-8

ولتاژ: 220 ولت تا 865 ولت

استاندارد حفاظتی IP55

بر اساس استاندارد طراحی IEC60034-30





بر اساس استاندارد GMYL

توان: 0.37 kw تا 7.5 kw

تعداد پل: 2-4

ولتاژ: 110-115-230-220-210 و 240 ولت

استاندارد حفاظتی IP54

بر اساس استاندارد طراحی IEC60034-30

## الکتروموتور سه فاز سری GL



**GL**  
**THREE-PHASE ASYNCHRONOUS MOTOR**  
Simple structure, reliable operation, high efficiency



STRONG POWER SAVES TIME AND EFFORT



STRONG POWER



PURE COPPER MOTOR



SAVE TIME AND ENERGY



SECURITY

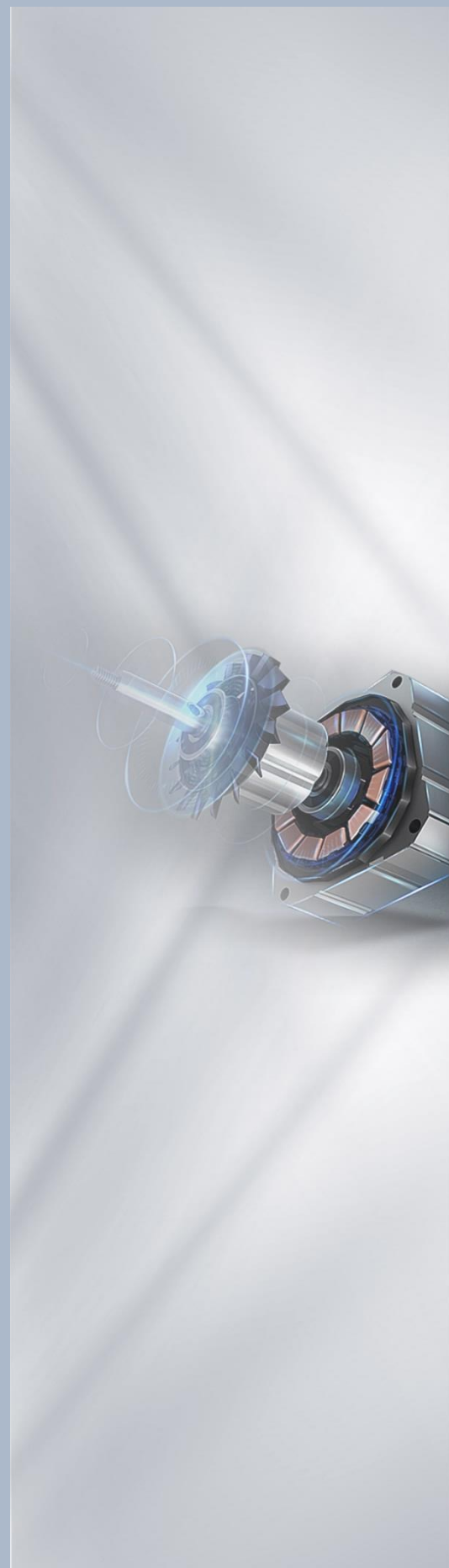


## مشخصات فنی الکتروموتور سه فاز سری GL

NO.	Frame reference	Rated power		Full load current at rated voltage			Full load speed in revolutions per minute	Frequency at constant power	Direct on line starting torque ratio	Direct on line pull out torque ratio	Direct on line starting current ratio	Efficiency	Power factor	Mean sound pressure level @1m on no load	Weight	Rotor inertia WK <sup>2</sup>
	and size	Power		Amps												
	Type	KW	HP	Amps (A)			Speed r/min	Frequency (HZ)	LRT/RLT	BDT/RLT	LRA/LRA	η (%)	Power factor (cosφ)	Noise LwdB(A)	Weight kg	J kgm <sup>2</sup>
				380V	400V	415V										
1	GL561-2	0.09	0.12	0.29	0.27	0.26	2700	50	2.2	2.1	5.2	62	0.77	57	3.8	0.00018
2	GL562-2	0.12	0.16	0.37	0.35	0.33	2700	50	2.2	2.1	5.2	64	0.78	57	4	0.00023
3	GL63M1-2	0.18	0.25	0.53	0.5	0.49	2720	50	2.3	2.3	5.5	65	0.8	61	4.5	0.00031
4	GL63M2-2	0.25	0.34	0.69	0.65	0.63	2720	50	2.3	2.3	5.5	68	0.81	61	4.7	0.0006
5	GL71M1-2	0.37	0.5	1.01	0.96	0.92	2755	50	2.2	2.3	6.1	69	0.81	64	6	0.00075
6	GL71M2-2	0.55	0.75	1.38	1.3	1.26	2790	50	2.3	2.3	6.1	74	0.82	64	6.3	0.0009
7	GL80M1-2	0.75	1	1.77	1.67	1.6	2845	50	2.3	2.2	6.1	75	0.83	67	10	0.0012
8	GL80M2-2	1.1	1.5	2.61	2.34	2.24	2835	50	2.3	2.2	6.9	76.2	0.84	67	11	0.0014
9	GL90S-2	1.5	2	3.46	3.29	3.15	2850	50	2.3	2.2	7	78.5	0.84	72	13	0.0029
10	GL90L-2	2.2	3	4.85	4.6	4.4	2855	50	2.3	2.2	7	81	0.85	72	14	0.0055
11	GL100L-2	3	4	6.34	6.02	5.77	2860	50	2.3	2.2	7.5	82.6	0.87	76	24	0.0109
12	GL112M-2	4	5.5	8.2	7.8	7.46	2880	50	2.3	2.2	7.5	84.2	0.88	77	28	0.0126
13	GL132S1-2	5.5	7.5	11.1	10.5	10.1	2900	50	2.3	2.2	7.5	85.7	0.88	80	40	0.0377
14	GL132S2-2	7.5	10	14.9	14.15	13.56	2900	50	2.3	2.2	7.5	87	0.88	80	43	0.0499
15	GL160M1-2	11	15	21.3	20.2	19.4	2930	50	2.3	2.2	7.5	88	0.89	86	83	0.055
16	GL160M2-2	15	20	28.8	27.4	26.2	2930	50	2.3	2.2	7.5	89	0.89	86	90	0.075
17	GL160L-2	18.5	25	34.7	32.97	31.6	2930	50	2.3	2.2	7.5	90	0.9	86	104	0.124
18	GL561-4	0.06	0.08	0.23	0.22	0.21	1300	50	2.1	2	4	56	0.7	48	3.8	0.0003
19	GL562-4	0.09	0.12	0.33	0.31	0.3	1300	50	2.1	2	4	58	0.72	48	4	0.0004
20	GL63M1-4	0.12	0.18	0.44	0.42	0.4	1310	50	2.2	2.1	4.4	57	0.72	52	4.5	0.0005
21	GL63M2-4	0.18	0.25	0.62	0.59	0.56	1310	50	2.2	2.1	4.4	60	0.73	52	4.7	0.0006
22	GL71M1-4	0.25	0.34	0.79	0.75	0.72	1340	50	2.2	2.1	5.2	65	0.74	55	6	0.0008
23	GL71M2-4	0.37	0.5	1.12	1.1	1	1340	50	2.2	2.1	5.2	67	0.75	55	6.3	0.0013
24	GL80M1-4	0.55	0.75	1.52	1.44	1.38	1390	50	2.3	2.4	5.2	71	0.75	58	10	0.0018
25	GL80M2-4	0.75	1	1.95	1.85	1.77	1390	50	2.3	2.3	6	73	0.76	58	11	0.0021
26	GL90S-4	1.1	1.5	2.85	2.7	2.6	1390	50	2.3	2.3	6	76.2	0.77	61	12	0.0023
27	GL90L-4	1.5	2	3.72	3.53	3.39	1400	50	2.3	2.3	6	78.5	0.78	61	14	0.0027
28	GL100L1-4	2.2	3	5.08	4.83	4.6	1420	50	2.3	2.3	7	81	0.81	64	23	0.0054
29	GL100L2-4	3	4	6.78	6.4	6.17	1420	50	2.3	2.3	7	82.6	0.82	64	25	0.0067
30	GL112M-4	4	5.5	8.8	8.36	8	1435	50	2.3	2.3	7	84.2	0.82	65	29	0.0095
31	GL132S-4	5.5	7.5	11.7	11.12	10.65	1440	50	2.3	2.3	7	85.7	0.83	71	43	0.0214
32	GL132M-4	7.5	10	15.6	14.8	14.2	1450	50	2.3	2.3	7	87	0.84	71	55	0.0296
33	GL160M-4	11	15	22.3	21.2	20.3	1460	50	2.3	2.3	7	88	0.85	75	86	0.0747
34	GL160L-4	15	20	30.1	28.6	27.4	1460	50	2.3	2.3	7	89	0.85	75	100	0.0918
35	GL71M1-6	0.18	0.25	0.74	0.7	0.67	870	50	2	1.9	4	56	0.66	52	6	0.0011
36	GL71M2-6	0.25	0.34	0.95	0.9	0.86	870	50	2	1.9	4	59	0.68	52	6.3	0.0014
37	GL80M1-6	0.37	0.5	1.23	1.17	1.12	880	50	2	1.9	4.7	62	0.7	54	10	0.0016
38	GL80M2-6	0.55	0.75	1.7	1.6	1.55	880	50	2.1	1.9	4.7	65	0.72	54	11	0.0019
39	GL90S-6	0.75	1	2.29	2.18	2.08	905	50	2.1	2	5.3	69	0.72	57	13	0.0029
40	GL90L-6	1.1	1.5	3.18	3.02	2.9	905	50	2.1	2	5.5	72	0.73	57	14	0.0035
41	GL100L-6	1.5	2	4	3.8	3.64	920	50	2.1	2	5.5	76	0.76	61	23	0.0069
42	GL112M-6	2.2	3	5.6	5.32	5.1	935	50	2.1	2	6.5	79	0.76	65	28	0.014
43	GL132S-6	3	4	7.4	7.03	6.73	960	50	2.1	2.1	6.5	81	0.76	69	38	0.0286
44	GL132M1-6	4	5.5	9.5	9.03	8.65	960	50	2.1	2.1	6.5	82	0.76	69	50	0.0357
45	GL132M2-6	5.5	7.5	12.6	11.97	11.16	960	50	2.1	2.1	6.5	84	0.77	69	57	0.0449
46	GL160M-6	7.5	10	16.9	16.1	15.6	970	50	2.1	2	6.5	86	0.78	73	82	0.081
47	GL160L-6	11	15	24.2	22.99	22.02	970	50	2.1	2	6.5	87.5	0.79	73	93	0.1116
48	GL80M1-8	0.18	0.25	0.83	0.79	0.75	645	50	1.9	1.8	3.3	51	0.61	52	10	0.0025
49	GL80M2-8	0.25	0.34	1.1	1.05	1	645	50	1.9	1.8	3.3	54	0.61	52	11	0.003
50	GL90S-8	0.37	0.5	1.49	1.4	1.36	675	50	1.9	1.8	4	62	0.61	56	13	0.0051
51	GL90L-8	0.55	0.75	2.17	2.06	2	680	50	2	1.8	4	63	0.61	56	15	0.0065
52	GL100L1-8	0.75	1	2.43	2.3	2.2	680	50	2	1.8	4	70	0.67	59	23	0.0095
53	GL100L2-8	1.1	1.5	3.36	3.2	3.06	680	50	2	1.8	5	72	0.69	59	25	0.011
54	GL112M-8	1.5	2	4.4	4.22	4.04	690	50	2	1.8	5	74	0.7	61	28	0.0245
55	GL132S-8	2.2	3	6	5.7	5.46	710	50	2	1.8	6	79	0.71	64	40	0.0314
56	GL132M-8	3	4	7.8	7.4	7.1	710	50	2	1.8	6	80	0.73	64	45	0.0395
57	GL160M1-8	4	5.5	10.3	9.78	9.37	720	50	2	1.9	6	81	0.73	68	71	0.0753
58	GL160M2-8	5.5	7.5	13.6	12.9	12.38	720	50	2	2	6.5	83	0.74	68	82.5	0.0931
59	GL100L1-10	0.25	0.34	1.33	1.26	1.22	530	50	1.2	1.7	3.2	55	0.52	59		0.0057
60	GL100L2-10	0.37	0.5	1.89	1.8	1.73	530	50	1.2	1.7	3.2	56	0.53	59		0.0073
61	GL112M1-10	0.55	0.75	2.5	2.37	2.29	540	50	1.2	1.7	3.4	62	0.54	61		0.0101
62	GL112M2-10	0.75	1	3.3	3.12	3.01	540	50	1.2	1.7	3.4	63	0.55	61		0.0123
63	GL132S-10	1.1	1.5	4.4	4.2	4	550	50	1.2	1.7	3.6	69	0.55	64		0.0274
64	GL132M-10	1.5	2	5.7	5.5	5.2	565	50	1.2	1.7	3.6	71	0.56	64		0.0351
65	GL160M1-10	2.2	3	7.7	7.3	7.1	575	50	1.3	1.8	4	76	0.57	68		0.0442
66	GL160M2-10	3	4	10.2	9.7	9.4	575	50	1.3	1.8	4	77	0.58	68		0.0841
67	GL100L1-12	0.25	0.34	1.55	1.47	1.42	420	50	1.1	1.7	2.8	50	0.49	59		0.0074
68	GL100L2-12	0.37	0.5	2.21	2.1	2.02	425	50	1.1	1.7	2.8	52	0.49	59		0.0103
69	GL112M1-12	0.55	0.75	3.01	2.84	2.74	435	50	1.1	1.7	3.2	57	0.49	61		0.0126
70	GL132S1-12	0.75	1	3.6	3.4	3.3	440	50	1.1	1.7	3.4	63	0.5	61		0.028
71	GL132S2-12	1.1	1.5	5.1	4.9	4.7	450	50	1.1	1.7	3.4	65	0.5	64		0.0359
72	GL132M-12	1.5	2	6.7	6.3	6.1	460	50	1.1	1.7	3.5	68	0.5	64		0.0452
73	GL160M-12	2.2	3	9	8.5	8.2	465	50	1.1	1.8	4	74	0.5	68		0.0861
74	GL160L-12	3	4	12.2	11.6	11.2	470	50	1.1	1.8	4	74.5	0.5	68		0.1065
75	GL112M1-16	0.25	0.34	1.52	1.44	1.39	310	50	0.9	1.6	2.5	48	0.47	61		0.0285
76	GL112M2-16	0.37	0.5	2.34	2.22	2.14	315	50	0.9	1.6	2.5	48.5	0.47	64		0.0366
77	GL132M-16	0.55	0.75	3.2	3	2.9	330	50	0.9	1.6	2.7	54	0.48	64		0.046
78	GL160M1-16	0.75	1	3.8	3.6	3.4	340	50	0.9	1.6	2.8	62	0.48	68		0.0877
79	GL160M2-16	1.1	1.5	5.4	5.1	4.9	345	50	0.9	1.6	2.8	64	0.48	68		0.1084
80	GL160L-16	1.5	2	7.1	6.7	6.5	345	50	0.9	1.6	2.8	66	0.48	70		0.1467



Frame size	Mounting dimensions													Overall dimensions											
	A	AA	AB	BB	HA	AC	AD	B	C	D	DH	E	F	G	H	K	METRIC	PG	KK	L	M	N	P	S	T
GL56	90	23	115	88	7	112	100	71	36	9	M4x12	20	3	7.2	56	5.8	2-M20x1.5	2-PG13.5	100	80	120	φ7	3		
GL63	100	24	135	100	7	123	109	80	40	11	M4x12	23	4	8.5	63	7	2-M20x1.5	2-PG13.5	115	95	140	φ10	3		
GL71	112	26	150	110	8	136	127	90	45	14	M5x12	30	5	11	71	7	2-M20x1.5	2-PG13.5	130	110	160	φ10	3.5		
GL80	125	35	156	125	9	155	134	100	50	19	M6x16	40	6	15.5	80	10	2-M20x1.5	2-PG16	165	130	200	φ12	3.5		
GL90S	140	37	175	125	10	175	140	100	56	24	M8x19	50	8	20	90	10	2-M25x1.5	2-PG16	165	130	200	φ12	3.5		
GL90L	140	37	175	150	10	175	140	125	56	24	M8x19	50	8	20	90	10	2-M25x1.5	2-PG16	165	130	200	φ12	3.5		
GL100L	160	40	204	172	11	196	160	140	63	28	M10x22	60	8	24	100	12	2-M32x1.5	2-PG21	215	180	250	φ15	4		
GL112M	190	41	227	181	12	220	178	140	70	28	M10x22	60	8	24	112	12	2-M32x1.5	2-PG21	215	180	250	φ15	4		
GL132S	216	51	258	186	14.5	259	206	140	89	38	M12x28	80	10	33	132	12	2-M32x1.5	2-PG21	265	230	300	φ15	4		
GL132M	216	51	258	224	14.5	259	206	178	89	38	M12x28	80	10	33	132	12	2-M32x1.5	2-PG21	265	230	300	φ15	4		
GL160M	254	55	314	260	18	315	255	210	108	42	M16x36	110	12	37	160	15	2-M40x1.5	2-PG29	300	250	350	φ19	5		
GL160L	254	55	314	304	18	315	255	254	108	42	M16x36	110	12	37	160	15	2-M40x1.5	2-PG29	300	250	350	φ19	5		



## BEARING RULES

Frame size	Poles	DE	NDE
80	2-4	6204-2RZ	6204-2RZ
90	2-6	6205-2RZ	6205-2RZ
100	2-6	6206-2RZ	6206-2RZ
112	2-6	6306-2RZ	6306-2RZ
132	2-6	6308-2RZ	6308-2RZ
160	2-6	6309-2RZC3	6309-2RZC3
180	2-6	6311C3	6311C3
200	2-6	6312C3	6312C3
225	2-6	6313C3	6313C3
250	2-6	6314C3	6314C3
280	2	6314C3	6314C3
	4-6	6317C3	6317C3
315	2	6317C3	6317C3
	4-6	NU319C3	6319C3
355	2	6319C3	6319C3
	4-6	NU322C3	NU322C3

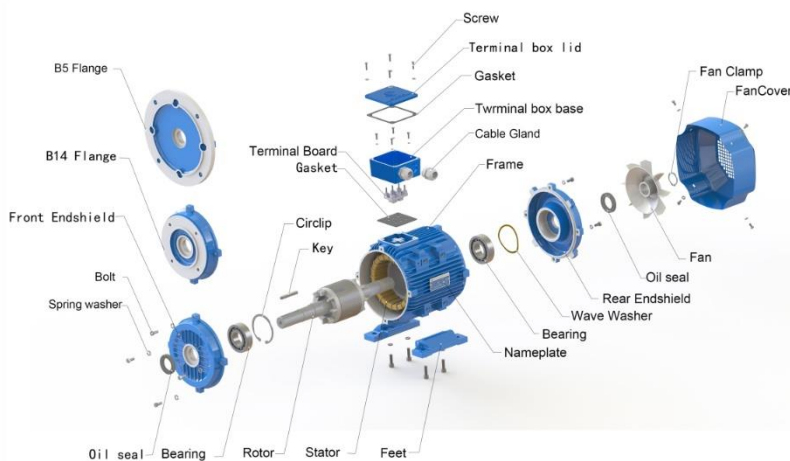
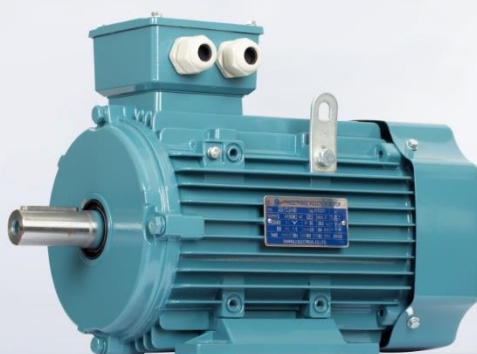


## الکتروموتور سه فاز GE2

# GE2

## THREE-PHASE ASYNCHRONOUS MOTOR

Simple structure, reliable operation, high efficiency



Strong and stable

Energy saving

Efficient and quiet

IE2

[www.famcocorp.com](http://www.famcocorp.com)

E-mail: [info@famcocorp.com](mailto:info@famcocorp.com)

@famco\_group

Tel: ۰۲۱-۴۸۰۰۰۰۴۹

Fax: ۰۲۱-۴۴۹۹۴۶۴۲

تهران، کیلومتر ۲۱ بزرگراه لشگری (جاده مخصوص کرج)

روبروی پالایشگاه نفت پارس، پلاک ۱۲



## مشخصات ابعادی الکتروموتور گوانگلو مدل GE2

NO.	Frame reference and size	Full load current at rated voltage			Rated power	Full load speed in revolutions per minute	Efficiency	Power factor	Direct on line starting torque ratio		Direct on line pull out torque ratio	Mean sound pressure level @ 1m on no load	Weight	Rotor inertia Wk <sup>2</sup>
		Amps (A)							Output	Speed				
	Type	380V	400V	415V	kW	r/min	%	cosφ	RLT	RLA	RLT	Noise LwdB(A)	Weight kg	J kg·m <sup>2</sup> ×10 <sup>3</sup>
1	IE2-80M1-2	1.79	1.70	1.51	0.75	2850	77.4	0.82	2.3	6.8	2.3	62	17	1.0
2	IE2-80M2-2	2.53	2.40	2.13	1.1	2870	79.6	0.83	2.3	7.1	2.3	62	19	1.3
3	IE2-90S-2	3.37	3.20	2.84	1.5	2880	81.3	0.84	2.3	7.3	2.3	67	26	2.0
4	IE2-90L-2	4.74	4.50	4.00	2.2	2880	83.2	0.85	2.3	7.6	2.3	67	30	2.6
5	IE2-100L1-2	6.21	5.90	5.24	3	2880	84.6	0.87	2.2	7.8	2.3	74	40	4.3
6	IE2-112M-2	8.00	7.60	6.76	4	2900	85.8	0.88	2.3	8.1	2.3	77	46	5.9
7	IE2-132S1-2	10.9	10.4	9.24	5.5	2910	87.0	0.88	2.2	8.2	2.3	79	64	13.0
8	IE2-132S2-2	14.5	13.8	12.3	7.5	2910	88.1	0.89	2.2	7.8	2.3	79	70	15.3
9	IE2-160M1-2	21.1	20	17.8	11	2940	89.4	0.89	2.2	7.9	2.3	81	120	49.3
10	IE2-160M2-2	28.3	26.9	23.9	15	2940	90.3	0.89	2.2	8.0	2.3	81	132	56.4
11	IE2-160L-2	34.7	33	29.3	18.5	2940	90.9	0.89	2.2	8.0	2.3	81	150	65.4
12	IE2-180M-2	41.2	39.1	34.8	22	2950	91.3	0.89	2.2	8.1	2.3	83	199	81.5
13	IE2-200L1-2	55.7	52.9	47.0	30	2960	92.0	0.89	2.0	7.5	2.3	84	243	164
14	IE2-200L2-2	68.3	64.9	57.7	37	2960	92.5	0.89	2.0	7.5	2.3	84	263	174
15	IE2-225M-2	82.7	78.6	69.9	45	2960	92.9	0.89	2.2	7.5	2.3	86	312	305
16	IE2-250M-2	101	96	85.3	55	2970	93.2	0.89	2.2	7.6	2.3	89	407	424
17	IE2-280S-2	137	130	116	75	2975	93.8	0.89	2.0	6.9	2.3	91	536	994
18	IE2-280M-2	163	155	138	90	2975	94.1	0.89	2.0	6.9	2.3	91	609	1049
19	IE2-315S-2	197	187	166	110	2975	94.3	0.90	2.0	7.0	2.2	92	875	1341
20	IE2-315M-2	236	224	199	132	2975	94.6	0.90	2.0	7.0	2.2	92	940	1893
21	IE2-315L1-2	282	268	238	160	2975	94.8	0.91	2.0	7.1	2.2	92	1004	2147
22	IE2-315L2-2	352	334	297	200	2975	95.0	0.91	2.0	7.1	2.2	92	1080	2380
23	IE2-355M-2	440	418	372	250	2980	95.0	0.91	1.6	7.1	2.2	100	1900	3000
24	IE2-355L-2	554	526	468	315	2980	95.0	0.91	1.6	7.2	2.2	100	2300	3500
25	IE2-80M2-4	1.89	1.80	1.60	0.75	1420	79.6	0.76	2.3	6.4	2.3	56	20	2.5
26	IE2-90S-4	2.74	2.60	2.31	1.1	1420	81.4	0.77	2.3	6.6	2.3	59	28	3.0
27	IE2-90L-4	3.68	3.50	3.11	1.5	1420	82.8	0.78	2.3	6.7	2.3	59	33	3.9
28	IE2-100L1-4	4.95	4.70	4.18	2.2	1440	84.3	0.80	2.3	7.3	2.3	64	42	7.8
29	IE2-100L2-4	6.53	6.20	5.51	3	1440	85.5	0.81	2.3	7.5	2.3	64	46	9.4
30	IE2-112M-4	8.53	8.10	7.20	4	1445	86.6	0.81	2.3	7.5	2.3	65	56	13.0
31	IE2-132S-4	11.7	11.1	9.87	5.5	1450	87.7	0.82	2.0	7.5	2.3	71	73	28.8
32	IE2-132M-4	15.5	14.7	13.1	7.5	1450	88.7	0.83	2.0	7.3	2.3	71	87	37.0
33	IE2-160M-4	22.4	21.3	18.9	11	1470	89.8	0.83	2.2	7.4	2.3	73	122	77.8
34	IE2-160L-4	29.9	28.4	25.2	15	1470	90.6	0.84	2.2	7.5	2.3	73	146	102
35	IE2-180M-4	36.2	34.4	30.6	18.5	1470	91.2	0.85	2.2	7.6	2.3	76	191	153
36	IE2-180L-4	42.9	40.8	36.3	22	1470	91.6	0.85	2.2	7.7	2.3	76	214	189
37	IE2-200L-4	58.1	55.2	49.1	30	1470	92.3	0.85	2.2	7.1	2.3	76	265	287
38	IE2-225S-4	70.5	67	59.6	37	1480	92.7	0.86	2.2	7.3	2.3	78	322	477
39	IE2-225M-4	85.4	81.1	72.1	45	1480	93.1	0.86	2.2	7.3	2.3	78	344	559
40	IE2-250M-4	104	99	88.0	55	1480	93.5	0.86	2.2	7.3	2.3	79	450	757
41	IE2-280S-4	139	132	117	75	1480	94.0	0.87	2.2	6.8	2.3	80	589	1936
42	IE2-280M-4	165	157	140	90	1480	94.2	0.88	2.2	6.9	2.3	80	682	2341
43	IE2-315S-4	199	189	168	110	1480	94.5	0.89	2.1	6.9	2.2	88	898	3252
44	IE2-315M-4	236	226	201	132	1480	94.7	0.89	2.1	6.9	2.2	88	984	3776
45	IE2-315L1-4	284	270	240	160	1480	94.9	0.90	2.2	6.9	2.2	88	1053	4130
46	IE2-315L2-4	355	337	300	200	1480	95.1	0.90	2.1	6.9	2.2	88	1150	4730
47	IE2-355M-4	444	422	375	250	1490	95.1	0.90	2.1	6.9	2.2	95	1700	6500
48	IE2-355L-4	559	531	472	315	1490	95.1	0.90	2.1	6.9	2.2	95	1900	8200
49	IE2-90S-6	2.11	2.00	1.78	0.75	930	75.9	0.71	2.0	5.8	2.1	57	26	3.9
50	IE2-90L-6	2.95	2.80	2.49	1.1	930	78.1	0.72	2.0	5.9	2.1	57	32	5.4
51	IE2-100L1-6	3.89	3.70	3.29	1.5	930	79.8	0.72	2.0	5.9	2.1	61	41	10.8
52	IE2-112M-6	5.68	5.40	4.80	2.2	945	81.8	0.72	2.1	6.2	2.1	65	48	15.3

52	IE2-112M-6	5.68	5.40	4.80	2.2	945	81.8	0.72	2.1	6.2	2.1	65	48	15.3
53	IE2-132S-6	7.47	7.10	6.31	3	960	83.3	0.72	2.0	6.4	2.1	69	61	32.2
54	IE2-132M1-6	9.68	9.20	8.18	4	965	84.6	0.74	2.0	6.6	2.1	69	74	39.9
55	IE2-132M2-6	12.9	12.3	10.9	5.5	965	86.0	0.75	2.0	6.8	2.1	69	87	50.0
56	IE2-160M-6	16.7	15.9	14.1	7.5	970	87.2	0.78	2.1	6.8	2.1	73	118	97.2
57	IE2-160L-6	23.9	22.7	20.2	11	970	88.7	0.79	2.1	6.9	2.1	73	148	128
58	IE2-180L-6	31.4	29.8	26.5	15	980	89.7	0.81	2.0	7.3	2.1	73	195	229
59	IE2-200L1-6	38.4	36.5	32.4	18.5	980	90.4	0.81	2.1	7.2	2.1	73	234	338
60	IE2-200L2-6	45.4	43.1	38.3	22	980	90.9	0.81	2.1	7.3	2.1	73	253	384
61	IE2-225M-6	60.6	57.6	51.2	30	980	91.7	0.82	2.0	6.8	2.1	74	288	570
62	IE2-250M-6	73.5	69.8	62.0	37	980	92.2	0.83	2.1	7.0	2.1	76	405	885
63	IE2-280S-6	86.3	82	72.9	45	980	92.7	0.85	2.1	7.2	2.0	78	521	1746
64	IE2-280M-6	105	100	88.9	55	980	93.1	0.85	2.1	7.2	2.0	78	602	2138
65	IE2-315S-6	143	136	121	75	990	93.7	0.85	2.0	6.5	2.0	83	833	4110
66	IE2-315M-6	172	163	145	90	990	94.0	0.85	2.0	6.6	2.0	83	897	4780
67	IE2-315L1-6	208	198	176	110	990	94.3	0.85	2.0	6.6	2.0	83	1004	5450
68	IE2-315L2-6	246	234	208	132	990	94.6	0.86	2.0	6.6	2.0	83	1111	6120
69	IE2-355M1-6	298	283	252	160	990	94.8	0.86	1.9	6.7	2.0	85	1550	9500
70	IE2-355M2-6	372	353	314	200	990	95.0	0.86	2.0	6.8	2.0	85	1600	10400
71	IE2-355L-6	465	442	393	250	990	95.0	0.86	2.0	6.8	2.0	85	1700	12400
72	IE2-80M1-8	0.98	0.93	0.89	0.18	645	45.9	0.61	1.8	3.3	1.9	52	15	2.7
73	IE2-80M2-8	1.23	1.17	1.13	0.25	645	50.6	0.61	1.8	3.3	1.9	52	16	3.2
74	IE2-90S-8	1.64	1.56	1.50	0.37	675	56.1	0.61	1.8	4.0	1.9	56	20	5.5
75	IE2-90L-8	2.22	2.11	2.03	0.55	680	61.7	0.61	1.8	4.0	2.0	56	23	7.0
76	IE2-100L1-8	2.57	2.44	2.35	0.75	680	66.2	0.67	1.8	4.0	2.0	59	29	9.7
77	IE2-100L2-8	3.42	3.25	3.13	1.1	680	70.8	0.69	1.6	5.0	2.0	59	31	11.9
78	IE2-112M-8	4.39	4.17	4.02	1.5	690	74.1	0.70	1.8	5.0	2.0	61	41	24.5
79	IE2-132S-8	6.07	5.76	5.56	2.2	710	77.6	0.71	1.8	6.0	2.0	64	61	31.4
80	IE2-132M-8	7.81	7.41	7.15	3	710	80.0	0.73	1.8	6.0	2.0	64	74	39.5
81	IE2-160M1-8	10.2	9.7	9.3	4	720	81.9	0.73	1.9	6.0	2.0	68	95.5	79.8
82	IE2-160M2-8	13.5	12.8	12.3	5.5	720	83.8	0.74	1.9	6.0	2.0	68	107	98.7
83	IE2-160L-8	17.8	16.9	16.3	7.5	720	85.3	0.75	1.9	6.0	2.0	68	128	134
84	IE2-180L-8	25.6	24.4	23.5	11	730	86.9	0.75	2.0	6.5	2.0	70	169	215
85	IE2-200L-8	34.1	32.4	31.2	15	730	88.0	0.76	2.0	6.6	2.0	73	236	359
86	IE2-225S-8	41.7	39.7	38.2	18.5	730	88.6	0.76	1.9	6.6	2.0	73	274	520
87	IE2-225M-8	48.1	45.7	44.0	22	730	89.1	0.78	1.9	6.6	2.0	73	290	580
88	IE2-250M-8	64.3	61.0	58.8	30	735	89.8	0.79	1.9	6.5	2.0	75	370	834
89	IE2-280S-8	78.8	74.9	72.2	37	740	90.3	0.79	1.9	6.6	2.0	76	488	1650
90	IE2-280M-8	95.4	90.7	87.4	45	740	90.7	0.79	1.9	6.6	2.0	76	563	1930
91	IE2-315S-8	115	109	105	55	735	90.0	0.81	1.8	6.6	2.0	82	852	4790
92	IE2-315M-8	154	146	141	75	735	91.6	0.81	1.8	6.2	2.0	82	933	5580
93	IE2-315L1-8	181	172	166	90	735	91.9	0.82	1.8	6.4	2.0	82	1027	6370
94	IE2-315L2-8	221	210	202	110	735	92.3	0.82	1.8	6.4	2.0	82	1117	7230
95	IE2-355M1-8	264	251	242	132	740	92.6	0.82	1.8	6.4	2.0	90	2000	7900
96	IE2-355M2-8	319	303	292	160	740	93.0	0.82	1.8	6.4	2.0	90	2150	10300
97	IE2-355L-8	392	372	359	200	740	93.5	0.83	1.8	6.4	2.0	90	2250	12300

## مشخصات بیرینگ GE2

Frame size	Poles	DE	NDE
80	2-4	6204-2RZ	6204-2RZ
90	2-6	6205-2RZ	6205-2RZ
100	2-6	6206-2RZ	6206-2RZ
112	2-6	6306-2RZ	6306-2RZ
132	2-6	6308-2RZ	6308-2RZ
160	2-6	6309-2RZC3	6309-2RZC3
180	2-6	6311C3	6311C3
200	2-6	6312C3	6312C3
225	2-6	6313C3	6313C3
250	2-6	6314C3	6314C3
280	2	6314C3	6314C3
	4-6	6317C3	6317C3
315	2	6317C3	6317C3
	4-6	NU319C3	6319C3
355	2	6319C3	6319C3
	4-6	NU322C3	NU322C3

## الکتروموتور سه فاز مدل Y3EJ



# Y3EJ



## مشخصات الکتروموتور Y3EJ

	Franme reference and size	Rated power	Full load speed in revolutions per minute	Full load current at rated voltage	Efficiency	Power factor	Direct on line starting torque ratio	Direct on line starting current ratio	Direct on line pull out torque ratio	Rated torque	Exciter Voltage	No-load/brake lag time
NO.	Type	power (Kw)	Speed (r/min)	Amps (A)	$\eta$ (%)	(cos $\phi$ )	LRT/RLT	LRA/RLA	BDT/RLT	Static torque not less than N.m	(V)	(S)
1	801-2	0.75	2825	1.9	73	0.84	2.2	6.5	2.2	7.36	100	0.2
2	802-2	1.1	2825	2.6	76	0.86	2.2	7	2.2	7.36	100	0.2
3	90S-2	1.5	2840	3.4	79	0.85	2.2	7	2.2	14.7	100	0.25
4	90L-2	2.2	2840	4.7	82	0.86	2.2	7	2.2	14.7	100	0.25
5	100L-2	3	2880	6.4	82	0.87	2.2	7	2.2	29.4	100	0.3
6	112M-2	4	2890	8.2	85.5	0.87	2.2	7	2.2	39.2	170	0.35
7	132S1-2	5.5	2900	11.1	86.2	0.88	2.2	7	2.2	73.6	170	0.4
8	132S2-2	7.5	2900	15	86.2	0.88	2.2	7	2.2	73.6	170	0.4
9	160M1-2	11	2930	21.8	87.2	0.88	2.2	7	2.2	147.2	170	0.5
10	160M2-2	15	2930	29.4	88.2	0.88	2.2	7	2.2	147.2	170	0.5
11	160L-2	18.5	2930	35.5	89	0.89	2.2	7	2.2	147.2	170	0.5
12	180M-2	22	2940	42.2	89	0.89	2.2	7	2.2	215.8	170	0.6
13	200L1-2	30	2950	56.9	90	0.89	2.2	7	2.2	294.3	170	0.7
14	200L2-2	37	2950	69.8	90.5	0.89	2.2	7	2.2	294.3	170	0.7
15	225M-2	45	2970	83.9	91.5	0.89	2.2	7	2.2	441.5	170	0.8
16	801-4	0.55	1390	1.6	70.5	0.76	2.2	6	2.2	7.36	100	0.2
17	802-4	0.75	1390	2.1	72.5	0.76	2.2	6	2.2	7.36	100	0.2
18	90S-4	1.1	1400	2.7	79	0.78	2.2	6.5	2.2	14.7	100	0.25
19	90L-4	1.5	1400	3.7	79	0.79	2.2	6.5	2.2	14.7	100	0.25
20	100L1-4	2.2	1420	5	81	0.82	2.2	7	2.2	29.4	100	0.3
21	100L2-4	3	1420	6.8	82.5	0.81	2.2	7	2.2	29.4	100	0.3
22	112M-4	4	1440	8.8	84.5	0.82	2.2	7	2.2	39.2	170	0.35
23	132S-4	5.5	1440	11.6	85.5	0.84	2.2	7	2.2	73.6	170	0.4
24	132M-4	7.5	1440	15.4	87	0.85	2.2	7	2.2	73.6	170	0.4
25	160M-4	11	1460	22.6	88	0.84	2.2	7	2.2	147.2	170	0.5
26	160L-4	15	1460	30.3	88.5	0.85	2.2	7	2.2	147.2	170	0.5
27	180M-4	18.5	1470	35.9	91	0.86	2.2	7	2.2	215.8	170	0.6
28	180L-4	22	1470	42.5	91.5	0.86	2.2	7	2.2	215.8	170	0.6
29	200L-4	30	1470	56.8	82.5	0.87	2.2	7	2.2	294.3	170	0.7
30	225S-4	37	1480	69.8	91.8	0.87	2.2	7	2.2	414.5	170	0.8
31	225M-4	45	1480	84.2	92.3	0.88	2.2	7	2.2	441.5	170	0.8
32	90S-6	0.75	910	2.3	72.5	0.7	2	5.5	2.2	14.7	100	0.25
33	90L-6	1.1	910	3.2	73.5	0.72	2	5.5	2	14.7	100	0.25
34	100L-6	1.5	940	4	77.5	0.74	2	6	2	29.4	100	0.3
35	112M-6	2.2	940	5.6	80.5	0.74	2	6	2	39.2	170	0.35
36	132S-6	3	960	7.2	83	0.76	2	6.5	2	73.6	170	0.4
37	132M1-6	4	960	9.4	84	0.77	2	6.5	2	73.6	170	0.4
38	132M2-6	5.5	960	12.6	85.3	0.78	2	6.5	2	73.6	170	0.4
39	160M-6	7.5	970	17	86	0.78	2	6.5	2	147.2	170	0.5
40	160L-6	11	970	24.6	86	0.78	2	6.5	2	147.2	170	0.5
41	180L-6	15	970	31.4	89.5	0.81	1.8	6.5	2	215.8	170	0.6
42	200L1-6	18.5	970	37.7	89.8	0.83	1.8	6.5	2	294.2	170	0.7
43	200L2-6	22	970	44.6	90.2	0.83	1.8	6.5	2	294.3	170	0.7
44	225M-6	30	980	59.5	90.2	0.85	1.8	6.5	2	441.5	170	0.8
45	132S-8	2.2	710	5.8	81	0.71	2	5.5	2	73.6	170	0.4
46	132M-8	3	710	7.7	82	0.72	2	5.5	2.2	73.6	170	0.4
47	160M1-8	4	720	9.9	84	0.73	2	6	2	147.2	170	0.5
48	160M2-8	5.5	720	13.3	85	0.74	2	6	2	147.2	170	0.5
49	160L-8	7.5	720	17.3	86	0.75	2	5.5	2	147.2	170	0.5
50	180L-8	11	730	27.7	86.5	0.77	1.7	6	2	215.8	170	0.6
51	200L-8	15	730	34.1	88	0.76	1.8	6	2	294.3	170	0.7
52	225S-8	18.5	730	41.3	89.5	0.76	1.7	6	2	441.5	170	0.8
53	225M-8	22	730	47.6	90	0.78	1.8	6	2	441.5	170	0.8

## الکتروموتور سه فاز Y3D

### Y3D

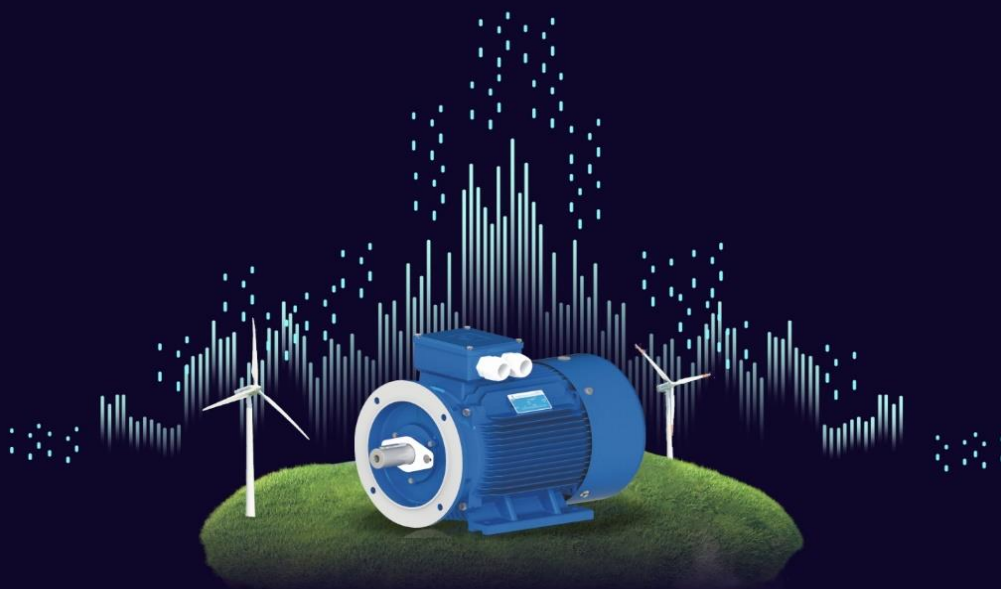
#### THREE-PHASE ASYNCHRONOUS MOTOR

Good starting performance, small size and light weight, reliable operation.



IE2  CE  

LOW NOISE, SAVE ENERGY



مشخصات الکتروموتو مدل Y3D

**TECHNICAL DATA OF Y3D SERIES**

Frame reference and size		Rated power	Full load current at rated voltage	Full load speed in revolutions per minute	Efficiency	Power factor	Direct on line starting torque ratio	Direct on line starting current ratio	Direct on line pull out torque ratio
Type	Poles	Output (KW)	Amps (A)	Speed (r/min)	$\eta$ (%)	Power factor (cos $\Phi$ )	LRT/RLT	LRA/RLA	BDT/RLT
801-	4	0.45	1.4	1420	66	0.74	1.5	6.5	1.8
	2	0.55	1.5	2860	65	0.85	1.7	7.0	1.8
802-	4	0.55	1.7	1420	68	0.74	1.6	6.5	1.8
	2	0.75	2	2860	66	0.85	1.8	7.0	1.8
90S-	4	0.85	2.3	1430	74	0.77	1.8	6.5	1.8
	2	1.1	2.8	2850	71	0.85	1.9	7.0	1.8
90L-	4	1.3	3.3	1430	76	0.78	1.8	6.5	1.8
	2	1.8	4.3	2850	73	0.85	2.0	7.0	1.8
100L1-	4	2	4.8	1430	78	0.81	1.7	6.5	1.8
	2	2.4	5.6	2850	76	0.86	1.9	7.0	1.8
100L2-	4	2.4	5.6	1430	79	0.83	1.6	6.5	1.8
	2	3	6.7	2850	77	0.89	1.7	7.0	1.8
112M-	4	3.3	7.4	1450	82	0.83	1.9	6.5	1.8
	2	4	8.6	2860	79	0.89	2.0	7.0	1.8
132S-	4	4.5	9.8	1450	83	0.84	1.7	6.5	1.8
	2	5.5	11.9	2860	79	0.89	1.8	7.0	1.8
132M-	4	6.5	13.8	1450	84	0.85	1.7	6.5	1.8
	2	8	17.1	2880	80	0.89	1.8	7.0	1.8
160M-	4	9	18.5	1460	87	0.85	1.6	6.5	1.8
	2	11	22.9	2920	82	0.89	1.8	7.0	1.8
160L-	4	11	22.3	1460	87	0.86	1.7	6.5	1.8
	2	14	28.8	2920	82	0.90	1.9	7.0	1.8
180M-	4	15	29.4	1470	89	0.87	1.8	6.5	1.8
	2	18.5	36.7	2940	85	0.90	1.9	7.0	1.8
180L-	4	18.5	35.9	1470	89	0.88	1.6	6.5	1.8
	2	22	42.7	2940	86	0.91	1.8	7.0	1.8
200L-	4	26	49.9	1470	89	0.89	1.4	6.5	1.8
	2	30	58.3	2950	85	0.92	1.6	7.0	1.8
225S-	4	32	60.7	1480	90	0.89	1.4	6.5	1.8
	2	37	71.7	2960	86	0.92	1.6	7.0	1.8
225M-	4	37	69.4	1480	91	0.89	1.6	6.5	1.8
	2	45	86.4	2960	86	0.92	1.6	7.0	1.8
250M-	4	45	84.4	1480	91	0.89	1.6	6.5	1.8
	2	52	103.2	2960	87	0.92	1.6	7.0	1.8
280S-	4	60	111.3	1480	91	0.90	1.4	6.5	1.8
	2	72	135.1	2970	88	0.92	1.5	7.0	1.8
280M-	4	72	133.6	1480	91	0.90	1.4	6.5	1.8
	2	82	152.2	2970	88	0.93	1.5	7.0	1.8
90S-	6	0.65	2.2	920	64	0.68	1.6	6.0	1.8
	4	0.85	2.3	1420	70	0.79	1.4	6.5	1.8
90L-	6	0.85	2.8	930	66	0.70	1.6	6.0	1.8
	4	1.1	3	1420	71	0.79	1.5	6.5	1.8
100L1-	6	1.3	3.8	940	74	0.70	1.7	6.0	1.8
	4	1.8	4.4	1440	77	0.80	1.4	6.5	1.8
100L2-	6	1.5	4.3	940	75	0.70	1.6	6.0	1.8
	4	2.2	5.4	1440	77	0.80	1.4	6.5	1.8
112M-	6	2.2	5.7	960	78	0.75	1.8	6.0	1.8
	4	2.8	6.7	1440	77	0.82	1.5	6.5	1.8
132S-	6	3	7.7	960	79	0.75	1.8	6.0	1.8
	4	4	9.5	1440	78	0.82	1.7	6.5	1.8

132M-	6	4	9.8	960	82	0.76	1.6	6.0	1.8
	4	5.5	12.3	1440	80	0.85	1.4	6.5	1.8
160M-	6	6.5	15.1	970	84	0.78	1.5	6.0	1.8
	4	8	17.4	1460	82	0.84	1.5	6.5	1.8
160L-	6	9	20.6	970	85	0.78	1.6	6.0	1.8
	4	11	23.4	1460	83	0.85	1.7	6.5	1.8
180M-	6	11	25.9	980	85	0.76	1.6	6.0	1.8
	4	14	29.8	1470	84	0.85	1.7	6.5	1.8
180L-	6	13	29.4	980	86	0.78	1.7	6.0	1.8
	4	16	33.6	1470	85	0.85	1.7	6.5	1.8
200L-	6	18.5	41.4	980	87	0.78	1.6	6.7	1.8
	4	22	44.7	1460	86.5	0.86	1.5	7.0	1.8
225S-	6	22	44.2	980	88	0.86	1.8	6.5	1.8
	4	28	56.2	1470	86.5	0.87	1.8	7.0	1.8
225M-	6	26	52.2	980	88	0.86	1.8	6.5	1.8
	4	32	66	1470	85.5	0.90	1.8	7.0	1.8
250M-	6	32	62.1	980	90	0.87	1.5	6.5	1.8
	4	42	74.7	1470	86.5	0.91	1.3	7.0	1.8
280S-	6	42	81.5	980	90	0.87	1.5	6.5	1.8
	4	55	104.2	1470	87	0.90	1.3	7.0	1.8
280M-	6	55	106.7	990	90	0.87	1.6	6.5	1.8
	4	67	138.1	1480	87	0.89	1.3	7.0	1.8
90L-	8	0.45	1.9	680	58	0.63	1.6	5.5	1.8
	4	0.75	1.92	1420	72	0.87	1.4	6.5	1.8
100L-	8	0.85	3.1	700	67	0.63	1.6	5.5	1.8
	4	1.5	3.5	1420	74	0.88	1.4	6.5	1.8
112M-	8	1.5	5	700	72	0.63	1.7	5.5	1.8
	4	2.4	5.3	1420	78	0.88	1.7	6.5	1.8
132S-	8	2.2	7	720	75	0.64	1.5	5.5	1.8
	4	3.3	7.1	1440	80	0.88	1.7	6.5	1.8
132M-	8	3	9	720	78	0.65	1.5	5.5	1.8
	4	4.5	9.4	1440	82	0.89	1.6	6.5	1.8
160M-	8	5	13.9	730	83	0.66	1.5	5.5	1.8
	4	7.5	15.2	1450	84	0.89	1.6	6.5	1.8
160L-	8	7	19	730	85	0.66	1.5	5.5	1.8
	4	11	21.8	1450	86	0.89	1.6	6.5	1.8
180L-	8	11	26	730	87	0.72	1.5	6.0	1.8
	4	17	31.5	1470	88	0.91	1.5	7.0	1.8
200L1-	8	14	33	740	87	0.74	1.8	6.0	1.8
	4	22	41.3	1470	88	0.92	1.7	7.0	1.8
200L2-	8	17	40.1	740	87	0.74	1.5	6.0	1.8
	4	26	48.8	1470	88	0.92	1.7	7.0	1.8
225M-	8	24	53.2	740	89	0.77	1.5	6.0	1.8
	4	34	66.7	1470	88	0.88	1.5	7.0	1.8
250M-	8	30	64.9	740	90	0.78	1.6	6.0	1.8
	4	42	78.8	1480	89	0.91	1.7	7.0	1.8
280S-	8	40	83.5	740	91	0.80	1.6	6.0	1.8
	4	55	102	1480	90	0.91	1.7	7.0	1.8
280M-	8	47	96.9	740	91	0.81	1.6	6.0	1.8
	4	67	122.9	1480	90	0.92	1.7	7.0	1.8
90S-	8	0.35	1.6	680	56	0.60	1.8	5.0	1.8
	6	0.45	1.4	930	70	0.72	1.2	6.0	1.8
90L-	8	0.45	1.9	680	59	0.60	1.7	5.0	1.8
	6	0.65	1.9	930	71	0.73	1.8	6.0	1.8
100L-	8	0.75	2.9	710	65	0.60	1.8	5.0	1.8
	6	1.1	3.1	950	75	0.73	1.9	6.0	1.8
112M-	8	1.3	4.5	710	72	0.61	1.7	5.0	1.8
	6	1.8	4.8	950	78	0.73	1.9	6.0	1.8
132S-	8	1.8	5.8	730	76	0.62	1.6	5.0	1.8
	6	2.4	6.2	970	80	0.73	1.9	6.0	1.8
132M-	8	2.6	8.2	730	78	0.62	1.9	5.0	1.8
	6	3.7	9.4	970	82	0.73	1.9	6.0	1.8
160M-	8	4.5	13.3	930	83	0.62	1.6	5.0	1.8
	6	6	14.7	980	85	0.73	1.9	6.0	1.8
160L-	8	6	17.5	930	84	0.62	1.6	5.0	1.8
	6	8	19.4	980	86	0.73	1.9	6.0	1.8
180M-	8	7.5	21.9	930	84	0.62	1.9	5.0	1.8
	6	10	24.2	980	86	0.73	1.9	6.0	1.8
180L-	8	9	24.8	730	85	0.65	1.8	5.0	1.8
	6	12	28.3	980	86	0.75	1.8	6.0	1.8
200L1-	8	12	32.5	730	86	0.65	1.8	5.0	1.8
	6	17	39.1	980	87	0.76	2.0	6.0	1.8
200L2-	8	15	40.3	730	87	0.65	1.8	5.0	1.8
	6	20	45.4	980	88	0.76	2.0	6.0	1.8



## الکتروموتور سه فاز مدل Y3



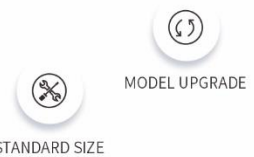
# Y3

**THREE-PHASE ASYNCHRONOUS MOTOR**  
Fast braking, simple structure and accurate positioning.

## Y3 MOTOR



### EXQUISITE CRAFTSMANSHIP QUALITY COMBINATION



Large torque, low noise, low vibration, well-designed, beautiful, easy to use, cast iron front flange can meet the requirements of various pumps.

Y3 series three-phase asynchronous motors are developed using new technology.

Y3 series motors are defined as fully enclosed, fan-cooled, and have the characteristics of novel design, beautiful appearance, compact structure, low noise, high efficiency, large volume, large torque, good starting performance, and convenient use.

The motor adopts Class F to evaluate and design the insulation system according to international standards, and has reached the international advanced level of similar products in the early 1990s.

Y3 series motors can be widely used in various mechanical drive equipment such as machine tools, blowers, pumps, compressors, transportation, agriculture and food processing.

مشخصات فنی الکتروموتور Y3

NO	Frame reference and size	Full load or rated voltage			Rated power		Full load speed in revolutions per minute	Efficiency	Power factor	Directon line starting torque ratio	Directon line starting current ratio	Directon line pull out torque ratio	Mean sound pressure level @1m or 10 m	Weight	Rotor inertia Wkg²
		Amperage			Power										
	Type	380V	400V	415V	kVA	HP									
1	Y3-80M1-2	1.77	1.74	1.68	0.75	1	2840	75	0.83	2.2	6.1	2.3	67	16	0.00075
2	Y3-80M2-2	2.61	2.48	2.39	1.1	1.5	2840	76.2	0.84	2.2	6.9	2.3	67	17	0.0009
3	Y3-90S-2	3.46	3.28	3.16	1.5	2	2880	78.5	0.84	2.2	7	2.3	72	20	0.0012
4	Y3-90L-2	4.85	4.61	4.45	2.2	3	2885	81	0.85	2.2	7	2.3	72	23	0.0014
5	Y3-100L-2	6.34	6.03	5.81	3	4	2900	82.6	0.87	2.2	7.5	2.3	76	30	0.0029
6	Y3-112M-2	8.2	7.79	7.51	4	5.5	2880	84.2	0.88	2.2	7.5	2.3	77	41	0.0055
7	Y3-132S1-2	11.1	10.53	10.15	5.5	7.5	2900	85.7	0.88	2.2	7.5	2.3	80	57.5	0.0109
8	Y3-132S2-2	14.9	14.1	13.6	7.5	10	2900	87	0.88	2.2	7.5	2.3	80	60.5	0.0125
9	Y3-160M1-2	21.2	20.2	19.5	11	15	2930	88.4	0.89	2.2	7.5	2.3	85	107	0.0377
10	Y3-160M2-2	28.6	27.2	26.2	15	20	2930	89.4	0.89	2.2	7.5	2.3	85	114	0.0499
11	Y3-160L-2	34.7	33	31.8	18.5	25	2930	90	0.9	2.2	7.5	2.3	85	133	0.065
12	Y3-180M-2	41	39	37.6	22	30	2940	90.5	0.9	2	7.5	2.3	89	165	0.075
13	Y3-200L1-2	55.4	52.6	50.7	30	40	2960	91.4	0.9	2	7.5	2.3	92	218	0.124
14	Y3-200L2-2	67.9	64.5	62.2	37	50	2960	92	0.9	2	7.5	2.3	92	230	0.139
15	Y3-225M-2	82.1	78	75.2	45	60	2960	92.5	0.9	2	7.5	2.3	92	290	0.233
16	Y3-250M-2	100	94.8	91.4	55	75	2970	93	0.9	2	7.5	2.3	93	359	0.312
17	Y3-280S-2	135	129	124	75	100	2975	93.6	0.9	2	7	2.3	94	475	0.579
18	Y3-280M-2	160	152	147	90	125	2975	93.9	0.91	2	7.1	2.3	94	510	0.675
19	Y3-315S-2	195	186	179	110	150	2975	94	0.91	1.8	7.1	2.2	96	875	1.18
20	Y3-315M-2	233	222	214	132	180	2975	94.5	0.91	1.8	7.1	2.2	96	963	1.82
21	Y3-315L1-2	279	265	256	160	220	2975	94.6	0.92	1.8	7.1	2.2	99	1010	2.08
22	Y3-315L2-2	348	331	319	200	270	2975	94.8	0.92	1.8	7.1	2.2	99	1138	2.38
23	Y3-355M-2	433	412	397	250	340	2980	95.2	0.92	1.6	7.1	2.2	103	1900	3
24	Y3-355L-2	545	518	499	315	430	2980	95.4	0.92	1.6	7.1	2.2	103	2300	3.5
25	Y3-80M1-4	1.57	1.49	1.44	0.55	0.75	1390	71	0.75	2.4	5.2	2.3	58	15	0.0018
26	Y3-80M2-4	2.05	1.95	1.88	0.75	1	1390	73	0.76	2.3	6	2.3	58	15.5	0.0021
27	Y3-90S-4	2.85	2.71	2.61	1.1	1.5	1390	76.2	0.77	2.3	6	2.3	61	19	0.0023
28	Y3-90L-4	3.72	3.54	3.41	1.5	2	1400	78.5	0.78	2.3	6	2.3	61	23	0.0027
29	Y3-100L1-4	5.09	4.9	4.72	2.2	3	1410	81	0.81	2.3	7	2.3	64	29	0.0054
30	Y3-100L2-4	6.78	6.39	6.16	3	4	1410	82.6	0.82	2.3	7	2.3	64	31	0.0067
31	Y3-112M-4	8.2	8.36	8.06	4	5.5	1435	84.2	0.82	2.3	7	2.3	65	42	0.0085
32	Y3-132S-4	11.7	11.2	10.8	5.5	7.5	1440	85.7	0.83	2.3	7	2.3	71	63.5	0.0214
33	Y3-132M-4	15.6	14.8	14.3	7.5	10	1450	87	0.84	2.3	7	2.3	71	72	0.0256
34	Y3-160M-4	22.5	21.4	20.6	11	15	1460	88.4	0.84	2.2	7	2.3	75	110	0.0747
35	Y3-160L-4	30	28.5	27.5	15	20	1460	89.4	0.85	2.2	7.5	2.3	75	129	0.0918
36	Y3-180M-4	36.3	34.5	33.3	18.5	25	1470	90	0.86	2.2	7.5	2.3	76	160	0.139
37	Y3-180L-4	43.2	40.8	39.3	22	30	1470	90.5	0.86	2.2	7.5	2.3	76	178	0.158
38	Y3-200L-4	57.6	55.1	53.1	30	40	1470	91.4	0.86	2.2	7.2	2.3	79	228	0.262
39	Y3-225S-4	70.2	66.7	64.3	37	50	1475	92	0.87	2.2	7.2	2.3	81	288	0.405
40	Y3-225M-4	84.9	80.7	77.8	45	60	1475	92.5	0.87	2.2	7.2	2.3	81	313	0.469
41	Y3-250M-4	103	98.1	94.6	55	75	1480	93	0.87	2.2	7.2	2.3	83	376	0.66
42	Y3-280S-4	138.3	131	127	75	100	1480	93.6	0.88	2.2	6.8	2.3	86	508	1.12
43	Y3-280M-4	165	157	152	90	125	1480	93.9	0.88	2.2	6.8	2.3	86	581	1.64
44	Y3-315S-4	201	191	184	110	150	1480	94.5	0.88	2.1	6.9	2.2	93	845	3.1
45	Y3-315M-4	240	228	220	132	180	1480	94.8	0.88	2.1	6.9	2.2	93	940	3.62
46	Y3-315L1-4	288	273	264	160	220	1480	94.9	0.89	2.1	6.9	2.2	97	1044	4.13
47	Y3-315L2-4	360	342	329	200	270	1480	94.9	0.89	2.1	6.9	2.2	97	1162	4.73
48	Y3-355M-4	443	421	405	250	340	1490	95.2	0.9	2.1	6.9	2.2	101	1700	6.5
49	Y3-355L-4	569	531	511	315	430	1490	95.2	0.9	2.1	6.9	2.2	101	1900	8.2
50	Y3-80M1-6	1.3	1.23	1.19	0.37	0.5	880	62	0.7	1.9	4.7	2	54	15	0.0016
51	Y3-80M2-6	1.8	1.7	1.64	0.55	0.75	880	65	0.72	1.9	4.7	2.1	54	16	0.0019
52	Y3-90S-6	2.29	2.18	2.1	0.75	1	905	69	0.72	2	5.3	2.1	57	20	0.0029
53	Y3-90L-6	3.18	3.02	2.91	1.1	1.5	905	72	0.73	2	5.5	2.1	57	23	0.0035
54	Y3-100L-6	4	3.8	3.66	1.5	2	920	76	0.75	2	5.5	2.1	61	29	0.0059
55	Y3-112M-6	5.6	5.29	5.1	2.2	3	935	79	0.76	2	6.5	2.1	65	41	0.014
56	Y3-132S-6	7.4	7.03	6.78	3	4	960	81	0.76	2.1	6.5	2.1	69	59	0.0235
57	Y3-132M1-6	9.75	9.26	8.93	4	5.5	960	82	0.76	2.1	6.5	2.1	69	66	0.0267
58	Y3-132M2-6	12.9	12.3	11.8	5.5	7.5	960	84	0.77	2.1	6.5	2.1	69	76.5	0.0449
59	Y3-160M-6	17.2	16.3	15.8	7.5	10	970	86	0.77	2	6.5	2.1	73	105	0.081
60	Y3-160L-6	24.5	23.3	22.4	11	15	970	87.5	0.78	2	6.5	2.1	73	122	0.116
61	Y3-180L1-6	31.6	30	28.9	15	20	970	89	0.81	2	7	2.1	73	167	0.207
62	Y3-200L1-6	38.6	36.6	35.3	18.5	25	980	90	0.81	2.1	7	2.1	76	236	0.315
63	Y3-200L2-6	44.7	42.5	41	22	30	980	90	0.83	2	7	2.1	76	247	0.36
64	Y3-225M-6	59.3	56.3	54.3	30	40	980	91.5	0.84	2	7	2.1	76	287	0.547
65	Y3-250M-6	71	67.5	65.1	37	50	980	92	0.86	2.1	7	2.1	78	355	0.843
66	Y3-280S-6	86	81.7	78.1	45	60	980	92.5	0.86	2.1	7	2	80	444	1.39

67	Y3-230M-6	104	99.5	96.9	95	75	900	92.2	0.96	2.1	7	2	80	456	1.65
68	Y3-315S-6	142	135	130	75	100	905	93.5	0.96	2	6.7	2	85	859	4.11
69	Y3-315M-6	169	161	155	50	125	905	93.2	0.96	2	6.7	2	85	960	4.78
70	Y3-315L1-6	207	196	189	110	150	905	94	0.96	2	6.7	2	85	1031	5.45
71	Y3-315L2-6	245	232	224	132	180	905	94.2	0.87	2	6.7	2	85	1107	6.12
72	Y3-355M1-6	292	278	268	160	220	960	94.5	0.88	1.9	6.7	2	92	1550	9.5
73	Y3-355M2-6	365	347	335	200	270	960	94.5	0.88	1.9	6.7	2	92	1600	10.4
74	Y3-355L-6	457	434	418	250	340	960	94.5	0.88	1.9	6.7	2	92	1700	12.4
75	Y3-80M11-8	0.83	0.84	0.8	0.18	0.25	645	51	0.61	1.2	3.3	19	52	15	0.0025
76	Y3-80M2-8	1.1	1.1	1.06	0.26	0.34	645	54	0.61	1.2	3.3	19	52	16	0.003
77	Y3-90S-8	1.49	1.41	1.36	0.37	0.5	675	62	0.61	1.2	4	19	56	20	0.0051
78	Y3-90L-8	2.17	2.07	1.99	0.56	0.75	680	63	0.61	1.2	4	2	56	23	0.0065
79	Y3-100L1-8	2.43	2.31	2.22	0.75	1	680	70	0.67	1.2	4	2	59	29	0.009
80	Y3-100L2-8	3.36	3.2	3.08	1.1	1.5	680	72	0.69	1.6	5	2	59	31	0.011
81	Y3-112M-8	4.4	4.18	4.03	1.5	2	690	74	0.7	1.2	5	2	61	41	0.0245
82	Y3-132S-8	6	5.66	5.46	2.2	3	710	79	0.71	1.2	6	2	64	61	0.0314
83	Y3-132M-8	7.8	7.41	7.15	3	4	710	80	0.73	1.2	6	2	64	74	0.0395
84	Y3-160M11-8	10.3	9.76	9.41	4	5.5	720	81	0.73	1.9	6	2	68	96.5	0.0753
85	Y3-160M2-8	13.6	12.9	12.5	5.5	7.5	720	83	0.74	1.9	6	2	68	107	0.0931
86	Y3-160L-8	17.8	16.9	16.3	7.5	10	720	85.5	0.75	1.9	6	2	68	128	0.126
87	Y3-180L-8	25.5	24.2	23.3	11	15	730	87.5	0.75	2	6.5	2	70	169	0.203
88	Y3-200L-8	34.1	32.4	31.2	15	20	730	88	0.76	2	6.6	2	73	236	0.339
89	Y3-225S-8	41.1	39	37.6	18.5	25	730	90	0.76	1.9	6.6	2	73	274	0.491
90	Y3-225M-8	48.9	45	43.4	22	30	730	90.5	0.78	1.9	6.6	2	73	290	0.547
91	Y3-250M-8	63	60.2	58.1	30	40	735	91	0.79	1.9	6.5	2	75	370	0.834
92	Y3-280S-8	78	73.9	71.2	37	50	740	91.5	0.79	1.9	6.6	2	76	482	1.65
93	Y3-280M-8	94	89.4	86.1	45	60	740	92	0.79	1.9	6.6	2	76	563	1.93
94	Y3-315S-8	111	106	102	55	75	735	92.2	0.81	1.2	6.6	2	82	852	4.79
95	Y3-315M-8	150	143	138	75	100	735	93.5	0.81	1.2	6.2	2	82	933	5.58
96	Y3-315L1-8	178	169	163	90	125	735	93.8	0.82	1.2	6.4	2	82	1027	6.37
97	Y3-315L2-8	217	206	199	110	150	735	94	0.82	1.2	6.4	2	82	1117	7.23
98	Y3-355M11-8	261	248	239	132	180	740	93.7	0.82	1.2	6.4	2	90	2000	7.9
99	Y3-355M2-8	315	299	288	160	220	740	94.2	0.82	1.2	6.4	2	90	2150	10.3
100	Y3-355L-8	387	368	355	200	270	740	94.5	0.83	1.2	6.4	2	90	2280	12.3
101	Y3-100L1-10	1.33	1.26	1.22	0.26	0.34	530	55	0.52	1.2	3.2	17	59	29	0.0057
102	Y3-100L2-10	1.89	1.8	1.73	0.37	0.5	530	56	0.53	1.2	3.2	17	59	31	0.0073
103	Y3-112M11-10	2.5	2.37	2.29	0.56	0.75	540	62	0.54	1.2	3.4	17	61	41	0.0101
104	Y3-112M2-10	3.3	3.12	3.01	0.75	1	540	63	0.55	1.2	3.4	17	61	43	0.0123
105	Y3-132S-10	4.4	4.2	4	1.1	1.5	560	69	0.56	1.2	3.6	17	64	60	0.0274
106	Y3-132M-10	5.7	5.5	5.2	1.5	2	565	71	0.56	1.2	3.6	17	64	63.5	0.0351
107	Y3-160M11-10	7.7	7.3	7.1	2.2	3	575	76	0.57	1.3	4	18	68	108	0.0442
108	Y3-160M2-10	10.2	9.7	9.4	3	4	575	77	0.58	1.3	4	18	68	115	0.0442
109	Y3-180M-10	12.2	11.5	11.1	4	5.5	580	82	0.61	1.3	4	18	70	164	0.1041
110	Y3-180L-10	16.2	15.4	14.9	5.5	7.5	580	83	0.62	1.3	4	18	70	180	0.1409
111	Y3-200L1-10	20.6	19.5	18.8	7.5	10	580	84	0.66	1.3	4.5	18	73	219	0.227
112	Y3-200L2-10	30	28.5	27.5	11	15	580	84.5	0.66	1.3	4.5	18	73	230	0.379
113	Y3-225M11-10	39.2	37.2	35.9	15	20	580	85.5	0.68	1.3	4.5	18	73	302	0.5489
114	Y3-225M2-10	48.1	45.7	44.1	18.5	25	580	86	0.68	1.3	4.5	18	73	312	0.6115
115	Y3-280S-10	49.9	47.4	45.7	22	30	585	90.5	0.74	1.5	5.2	2	76	495	0.9324
116	Y3-280M11-10	67.7	64.3	62	30	40	585	91	0.74	1.5	5.2	2	76	531	1.2447
117	Y3-280M2-10	83.5	79.3	76.5	37	50	585	91	0.74	1.5	5.2	2	76	560	2.1577
118	Y3-315S-10	100	96	91	45	60	590	91.5	0.75	1.5	6.2	2	82	852	5.2952
119	Y3-315M-10	121	115	111	55	75	590	92	0.75	1.5	6.2	2	82	903	6.2384
120	Y3-315L1-10	162	154	148	75	100	590	92.5	0.76	1.5	5.8	2	82	1007	7.1217
121	Y3-315L2-10	191	181	175	90	125	590	93	0.77	1.5	5.9	2	82	1100	8.0831
122	Y3-355M11-10	230	218	211	110	150	590	93.2	0.78	1.3	6	2	90	1800	10.176
123	Y3-355M2-10	275	261	252	132	180	590	93.5	0.78	1.3	6	2	90	2000	11.5154
124	Y3-355L-10	334	317	305	160	220	590	93.5	0.78	1.3	6	2	90	2500	13.7514
125	Y3-100L1-12	1.56	1.47	1.42	0.26	0.34	420	50	0.49	1.1	2.8	17	59	30	0.0074
126	Y3-100L2-12	2.21	2.1	2.02	0.37	0.5	425	52	0.49	1.1	2.8	17	59	32	0.0103
127	Y3-112M11-12	3.01	2.84	2.74	0.56	0.75	435	57	0.49	1.1	3.2	17	61	43	0.0126
128	Y3-132S1-12	3.6	3.4	3.3	0.75	1	440	63	0.5	1.1	3.4	17	61	58	0.028
129	Y3-132S2-12	5.1	4.9	4.7	1.1	1.5	450	65	0.5	1.1	3.4	17	64	63.5	0.0369
130	Y3-132M-12	6.7	6.3	6.1	1.5	2	460	68	0.5	1.1	3.5	17	64	74	0.0452
131	Y3-160M-12	9	8.5	8.2	2.2	3	465	74	0.5	1.1	4	18	68	111	0.0951
132	Y3-180L-12	12.2	11.6	11.2	3	4	470	74.5	0.5	1.1	4	18	68	132	0.1065
133	Y3-180L1-12	14.1	13.4	12.9	4	5.5	470	78	0.55	1.2	4	18	70	176	0.1441
134	Y3-180L2-12	18.5	17.6	16.9	5.5	7.5	475	79	0.57	1.2	4	18	70	183	0.2322
135	Y3-200L1-12	24.2	23	22.2	7.5	10	475	81	0.58	1.2	4.5	18	73	227	0.3977
136	Y3-225M11-12	33.1	31.5	30.3	11	15	480	84	0.6	1.2	4.5	18	73	302	0.5616
137	Y3-225M2-12	44.7	42.4	40.9	15	20	480	85	0.6	1.2	4.5	18	73	318	0.6295
138	Y3-250M-12	53	50.3	48.5	18.5	25	480	85.5	0.62	1.2	4.5	18	73	379	0.9539
139	Y3-280S-12	60	57	55	22	30	485	87	0.64	1.2	4.5	18	76	498	1.2871
140	Y3-280M-12	80.1	76.1	73.3	30	40	485	87.5	0.65	1.2	4.5	18	76	512	2.2074
141	Y3-315S-12	93.2	88.5	85.3	37	50	485	90	0.67	1.2	4.5	15	76	895	5.4784
142	Y3-315M-12	112.8	107.1	103.2	45	60	485	90.5	0.67	1.2	4.5	15	82	956	6.3919
143	Y3-315L1-12	137.3	130.5	125.8	55	75	485	90.8	0.67	1.2	4.5	15	82	1023	7.2895
144	Y3-315L2-12	186.9	177.6	171.1	75	100	485	91	0.67	1.2	4.5	15	82	1142	8.2691
145	Y3-355M11-12	212.3	201.7	194.4	90	125	490	92	0.7	1.2	4.5	17	82	1800	10.41
146	Y3-355M2-12	258.4	245.4	236.6	110	150	490	92.4	0.7	1.2	4.5	17	90	1920	11.7803
147	Y3-355L-12	309.4	293.9	283.3	132	180	490	92.6	0.7	1.2	4.5	17	90	2300	14.0577



145	Y3-355M1-12	212.3	201.7	194.4	90	125	480	92	0.7	1.2	4.5	17	82	1300	10.41
146	Y3-355M2-12	258.4	245.4	236.6	110	150	480	92.4	0.7	1.2	4.5	17	80	1520	11.7803
147	Y3-355L-12	309.4	293.9	283.3	132	180	480	92.6	0.7	1.2	4.5	17	90	2300	14.0677
148	Y3-112M1-16	1.52	1.44	1.39	0.25	0.34	310	48	0.47	0.9	2.5	16	61	38	0.0285
149	Y3-112M2-16	2.34	2.22	2.14	0.37	0.5	315	48.5	0.47	0.9	2.5	16	64	45	0.0396
150	Y3-132M-16	3.2	3	2.9	0.56	0.75	330	54	0.48	0.9	2.7	16	64	75	0.046
151	Y3-160M1-16	3.8	3.6	3.4	0.75	1	340	62	0.48	0.9	2.8	16	68	96.5	0.0877
152	Y3-160M2-16	5.4	5.1	4.9	1.1	1.5	345	64	0.48	0.9	2.8	16	68	108	0.1084
153	Y3-160L-16	7.1	6.7	6.5	1.5	2	345	66	0.48	0.9	2.8	16	70	127	0.1467
154	Y3-180M-16	9.4	8.9	8.6	2.2	3	360	71.5	0.49	0.9	3.2	16	70	156	0.2364
155	Y3-180L-16	12.8	12.1	11.7	3	4	365	72	0.49	0.9	3.2	16	73	168	0.3948
156	Y3-200L1-16	16.4	15.6	15	4	5.5	365	74	0.5	0.9	3.2	16	73	237	0.5718
157	Y3-200L2-16	22.1	21	20.2	5.5	7.5	365	75	0.5	0.9	3.2	16	73	248	0.637
158	Y3-225-16	28.4	26.9	26	7.5	10	380	78	0.51	0.9	3.5	16	73	274	0.9712
159	Y3-250M-16	39.4	37.4	36.7	11	15	380	80	0.53	0.9	3.5	16	76	388	1.9215
160	Y3-280M-16	49.8	47.3	45.6	15	20	380	82	0.56	1	3.5	16	76	552	2.2475
161	Y3-315-16	57.6	54.7	52.7	18.5	25	385	86	0.56	1	3.5	16	76	885	5.5781
162	Y3-315M-16	68.1	64.6	62.3	22	30	385	87	0.56	1	3.5	16	82	936	6.4581
163	Y3-315L1-16	81.7	87.1	83.9	30	40	385	88	0.56	1	3.5	16	82	1037	7.4181
164	Y3-315L2-16	112	106	102	37	50	385	88	0.56	1	3.5	16	82	1120	8.4196

# الکتروموتور سه فاز مدل IE2

## IE2

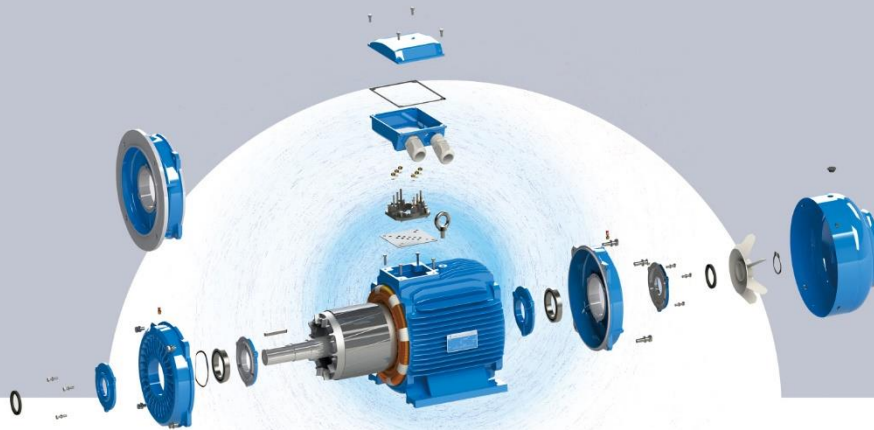
### THREE-PHASE ASYNCHRONOUS MOTOR

STRONG/ STABLE/EFFICIENT/  
ENERGY-SAVING /  
CONSUMPTION-REDUCING



### IE series three-phase asynchronous motor

It has reasonable structure, beautiful appearance, high efficiency, low noise, low vibration, high efficiency and energy saving, protection level and high insulation level.



IE2

IE3

IE4



Features and advantages:



Low temperature rise



Large heat  
dissipation area



long lasting



## مشخصات فنی الترموتور مدل IE2

	Frame reference and size	Rated power	Full load speed in revolutions per minute	Full load current at rated voltage	Efficiency	Power factor	Direct on line starting torque ratio	Direct on line starting current ratio	Direct on line pull out torque ratio	Mean sound pressure level @ 1m on no load	Voltage
NO.	Type	Output kW	Speed r/min	Amps A	EFF. %	P.F. cosφ	LRT/RLT	LRA/RLA	BDT/RLT	Noise LwdB (A)	Voltage V
1	IE2-80M1-2	0.75	2850	1.7	77.4	0.82	2.3	6.8	2.3	62	400
2	IE2-80M2-2	1.1	2870	2.4	79.6	0.83	2.3	7.1	2.3	62	400
3	IE2-90S-2	1.5	2880	3.2	81.3	0.84	2.3	7.3	2.3	67	400
4	IE2-90L-2	2.2	2880	4.5	83.2	0.85	2.3	7.6	2.3	67	400
5	IE2-100L1-2	3	2880	5.9	84.6	0.87	2.2	7.8	2.3	74	400
6	IE2-112M-2	4	2900	7.6	85.8	0.88	2.3	8.1	2.3	77	400
7	IE2-132S1-2	5.5	2910	10.4	87	0.88	2.2	8.2	2.3	79	400
8	IE2-132S2-2	7.5	2910	13.8	88.1	0.89	2.2	7.8	2.3	79	400
9	IE2-160M1-2	11	2940	20	89.4	0.89	2.2	7.9	2.3	81	400
10	IE2-160M2-2	15	2940	26.9	90.3	0.89	2.2	8	2.3	81	400
11	IE2-160L-2	18.5	2940	33	90.9	0.89	2.2	8	2.3	81	400
12	IE2-180M-2	22	2950	39.1	91.3	0.89	2.2	8.1	2.3	83	400
13	IE2-200L1-2	30	2960	52.9	92	0.89	2	7.5	2.3	84	400
14	IE2-200L2-2	37	2960	64.9	92.5	0.89	2	7.5	2.3	84	400
15	IE2-225M-2	45	2960	78.6	92.9	0.89	2.2	7.5	2.3	86	400
16	IE2-250M-2	55	2970	96	93.2	0.89	2.2	7.6	2.3	89	400
17	IE2-280S-2	75	2975	130	93.8	0.89	2	6.9	2.3	91	400
18	IE2-280M-2	90	2975	155	94.1	0.89	2	6.9	2.3	91	400
19	IE2-315S-2	110	2975	187	94.3	0.9	2	7	2.2	92	400
20	IE2-315M-2	132	2975	224	94.6	0.9	2	7	2.2	92	400
21	IE2-315L1-2	160	2975	268	94.8	0.91	2	7.1	2.2	92	400
22	IE2-315L2-2	200	2975	334	95	0.91	2	7.1	2.2	92	400
23	IE2-355M-2	250	2980	418	95	0.91	1.6	7.1	2.2	100	400
24	IE2-355L-2	315	2980	526	95	0.91	1.6	7.2	2.2	100	400
25	IE2-80M2-4	0.75	1420	1.8	79.6	0.76	2.3	6.4	2.3	56	400
26	IE2-90S-4	1.1	1420	2.6	81.4	0.77	2.3	6.6	2.3	59	400
27	IE2-90L-4	1.5	1420	3.5	82.8	0.78	2.3	6.7	2.3	59	400
28	IE2-100L1-4	2.2	1440	4.7	84.3	0.8	2.3	7.3	2.3	64	400
29	IE2-100L2-4	3	1440	6.2	85.5	0.81	2.3	7.5	2.3	64	400
30	IE2-112M-4	4	1445	8.1	86.6	0.81	2.3	7.5	2.3	65	400
31	IE2-132S-4	5.5	1450	11.1	87.7	0.82	2	7.5	2.3	71	400
32	IE2-132M-4	7.5	1450	14.7	88.7	0.83	2	7.3	2.3	71	400
33	IE2-160M-4	11	1470	21.3	89.8	0.83	2.2	7.4	2.3	73	400
34	IE2-160L-4	15	1470	28.4	90.6	0.84	2.2	7.5	2.3	73	400
35	IE2-180M-4	18.5	1470	34.4	91.2	0.85	2.2	7.6	2.3	76	400
36	IE2-180L-4	22	1470	40.8	91.6	0.85	2.2	7.7	2.3	76	400
37	IE2-200L-4	30	1470	55.2	92.3	0.85	2.2	7.1	2.3	76	400
38	IE2-225S-4	37	1480	67	92.7	0.86	2.2	7.3	2.3	78	400
39	IE2-225M-4	45	1480	81.1	93.1	0.86	2.2	7.3	2.3	78	400
40	IE2-250M-4	55	1480	99	93.5	0.86	2.2	7.3	2.3	79	400
41	IE2-280S-4	75	1480	132	94	0.87	2.2	6.8	2.3	80	400
42	IE2-280M-4	90	1480	157	94.2	0.88	2.2	6.9	2.3	80	400
43	IE2-315S-4	110	1480	189	94.5	0.89	2.1	6.9	2.2	88	400
44	IE2-315M-4	132	1480	226	94.7	0.89	2.1	6.9	2.2	88	400
45	IE2-315L1-4	160	1480	270	94.9	0.9	2.2	6.9	2.2	88	400
46	IE2-315L2-4	200	1480	337	95.1	0.9	2.1	6.9	2.2	88	400
47	IE2-355M-4	250	1490	422	95.1	0.9	2.1	6.9	2.2	95	400
48	IE2-355L-4	315	1490	531	95.1	0.9	2.1	6.9	2.2	95	400
49	IE2-90S-6	0.75	930	2	75.9	0.71	2	5.8	2.1	57	400
50	IE2-90L-6	1.1	930	2.8	78.1	0.72	2	5.9	2.1	57	400
51	IE2-100L1-6	1.5	930	3.7	79.8	0.72	2	5.9	2.1	61	400
52	IE2-112M-6	2.2	945	5.4	81.8	0.72	2.1	6.2	2.1	65	400
53	IE2-132S-6	3	960	7.1	83.3	0.72	2	6.4	2.1	69	400
54	IE2-132M1-6	4	965	9.2	84.6	0.74	2	6.6	2.1	69	400
55	IE2-132M2-6	5.5	965	12.3	86	0.75	2	6.8	2.1	69	400
56	IE2-160M-6	7.5	970	15.9	87.2	0.78	2.1	6.8	2.1	73	400
57	IE2-160L-6	11	970	22.7	88.7	0.79	2.1	6.9	2.1	73	400
58	IE2-180L-6	15	980	29.8	89.7	0.81	2	7.3	2.1	73	400
59	IE2-200L1-6	18.5	980	36.5	90.4	0.81	2.1	7.2	2.1	73	400
60	IE2-200L2-6	22	980	43.1	90.9	0.81	2.1	7.3	2.1	73	400
61	IE2-225M-6	30	980	57.6	91.7	0.82	2	6.8	2.1	74	400
62	IE2-250M-6	37	980	69.8	92.2	0.83	2.1	7	2.1	76	400
63	IE2-280S-6	45	980	82	92.7	0.85	2.1	7.2	2	78	400
64	IE2-280M-6	55	980	100	93.1	0.85	2.1	7.2	2	78	400
65	IE2-315S-6	75	990	136	93.7	0.85	2	6.5	2	83	400
66	IE2-315M-6	90	990	163	94	0.85	2	6.6	2	83	400
67	IE2-315L1-6	110	990	198	94.3	0.85	2	6.6	2	83	400
68	IE2-315L2-6	132	990	234	94.6	0.86	2	6.6	2	83	400
69	IE2-315L2-6	160	990	283	94.8	0.86	1.9	6.7	2	85	400
70	IE2-355M2-6	200	990	353	95	0.86	2	6.8	2	85	400
71	IE2-355L-6	250	990	442	95	0.86	2	6.8	2	85	400

## الکتروموتور سه فاز مدل IE3

# IE3

### THREE-PHASE ASYNCHRONOUS MOTOR

STRONG/ STABLE/EFFICIENT  
ENERGY-SAVING /  
CONSUMPTION-REDUCING



Large torque, low noise, low vibration, well-designed, beautiful, easy to use, cast iron front flange can meet the requirements of various pumps.



Low temperature rise



Large heat dissipation area



long lasting

• It is widely used in fans, water pumps, machine tools, compressors, transportation machinery, etc. to drive various general machinery and equipment. It can also be used in other harsh places such as petroleum, chemical industry, iron, and mining.

### IE series three-phase asynchronous motor

It has reasonable structure, beautiful appearance, high efficiency, low noise, low vibration, high efficiency and energy saving, protection level and high insulation level



## مشخصات فنی الکتروموتور IE3

	Frame reference and size	Rated power	Full load speed in revolutions per minute	Full load current at rated voltage	Efficiency	Power factor	Direct on line starting torque ratio	Direct on line starting current ratio	Direct on line pull-up torque ratio	Direct on line pull out torque ratio	Mean sound pressure level @1m on no load	Voltage
NO.	Type	Output kW	Speed r/min	Amps (A)	EFF. %	P.F. CosΦ	LRT/RLT	LRA/RLA	Tmin/RLT	BDT/RLT	Noise LwdB(A)	Voltage V
1	IE3-80M1-2	0.75	2890	1.64	80.7	0.82	2.3	7.0	1.5	2.3	62	400
2	IE3-80M2-2	1.1	2890	2.31	82.7	0.83	2.2	7.3	1.5	2.3	62	400
3	IE3-90S-2	1.5	2890	3.06	84.2	0.84	2.2	7.6	1.5	2.3	67	400
4	IE3-90L-2	2.2	2890	4.35	85.9	0.85	2.2	7.6	1.4	2.3	67	400
5	IE3-100L-2	3	2895	5.71	87.1	0.87	2.2	7.8	1.4	2.3	74	400
6	IE3-112M-2	4	2910	7.45	88.1	0.88	2.2	8.3	1.4	2.3	77	400
7	IE3-132S1-2	5.5	2940	10.1	89.2	0.88	2.0	8.3	1.2	2.3	79	400
8	IE3-132S2-2	7.5	2940	13.7	90.1	0.88	2.0	7.9	1.2	2.3	79	400
9	IE3-160M1-2	11	2950	19.6	91.2	0.89	2.0	8.1	1.2	2.3	81	400
10	IE3-160M2-2	15	2950	26.5	91.9	0.89	2.0	8.1	1.2	2.3	81	400
11	IE3-160L-2	18.5	2950	32.5	92.4	0.89	2.0	8.2	1.1	2.3	81	400
12	IE3-180M-2	22	2960	38.5	92.7	0.89	2.0	8.2	1.1	2.3	83	400
13	IE3-200L1-2	30	2970	52.1	93.3	0.89	2.0	7.6	1.1	2.3	84	400
14	IE3-200L2-2	37	2970	64	93.7	0.89	2.0	7.6	1.1	2.3	84	400
15	IE3-225M-2	45	2970	76.8	94.0	0.90	2.0	7.7	1.0	2.3	86	400
16	IE3-250M-2	55	2980	93.5	94.3	0.90	2.0	7.7	1.0	2.3	89	400
17	IE3-280S-2	75	2980	127	94.7	0.90	1.8	7.1	0.9	2.3	91	400
18	IE3-280M-2	90	2980	152	95.0	0.90	1.8	7.1	0.9	2.3	91	400
19	IE3-315S-2	110	2980	185	95.2	0.90	1.8	7.1	0.9	2.3	92	400
20	IE3-315M-2	132	2980	224	94.5	0.90	1.8	7.1	0.9	2.3	92	400
21	IE3-315L1-2	160	2980	265	95.6	0.91	1.8	7.2	0.9	2.3	92	400
22	IE3-315L2-2	200	2980	331	95.8	0.91	1.8	7.2	0.8	2.2	92	400
23	IE3-355M-2	250	2980	414	95.8	0.91	1.6	7.2	0.8	2.2	100	400
24	IE3-355L-2	315	2980	522	95.8	0.91	1.6	7.2	0.8	2.2	100	400
25	IE3-80M-4	0.75	1430	1.75	82.5	0.75	2.3	6.6	1.6	2.3	56	400
26	IE3-90S-4	1.1	1440	2.48	84.1	0.76	2.3	6.8	1.6	2.3	59	400
27	IE3-90L-4	1.5	1440	3.3	85.3	0.77	2.3	7.0	1.6	2.3	59	400
28	IE3-100L1-4	2.2	1455	4.52	86.7	0.81	2.3	7.6	1.5	2.3	64	400
29	IE3-100L2-4	3	1455	6.02	87.7	0.82	2.3	7.6	1.5	2.3	64	400
30	IE3-112M-4	4	1460	7.95	88.6	0.82	2.2	7.8	1.5	2.3	65	400
31	IE3-132S-4	5.5	1470	10.7	89.6	0.83	2.0	7.9	1.4	2.3	71	400
32	IE3-132M-4	7.5	1470	14.3	90.4	0.84	2.0	7.5	1.4	2.3	71	400
33	IE3-160M-4	11	1470	20.4	91.4	0.85	2.2	7.7	1.4	2.3	73	400
34	IE3-160L-4	15	1470	27.3	92.1	0.86	2.2	7.8	1.4	2.3	73	400
35	IE3-180M-4	18.5	1475	33.5	92.6	0.86	2.0	7.8	1.2	2.3	76	400
36	IE3-180L-4	22	1475	39.7	93.0	0.86	2.0	7.8	1.2	2.3	76	400
37	IE3-200L-4	30	1480	53.8	93.6	0.86	2.0	7.8	1.2	2.3	76	400
38	IE3-225S-4	37	1485	66.1	93.9	0.86	2.0	7.4	1.2	2.3	78	400
39	IE3-225M-4	45	1485	80.2	94.2	0.86	2.0	7.4	1.1	2.3	78	400
40	IE3-250M-4	55	1485	97.6	94.6	0.86	2.0	7.4	1.1	2.3	79	400
41	IE3-280S-4	75	1485	129	95.0	0.88	2.0	6.9	1.0	2.3	80	400
42	IE3-280M-4	90	1485	155	95.2	0.88	2.0	6.9	1.0	2.3	80	400
43	IE3-315S-4	110	1485	187	95.4	0.89	2.0	7.0	1.0	2.2	88	400
44	IE3-315M-4	132	1485	224	95.6	0.89	2.0	7.0	1.0	2.2	88	400
45	IE3-315L1-4	160	1485	271	95.8	0.89	2.0	7.1	1.0	2.2	88	400
46	IE3-315L2-4	200	1485	334	96.0	0.90	2.0	7.1	0.9	2.2	88	400
47	IE3-355M-4	250	1490	418	96.0	0.90	2.0	7.1	0.9	2.2	95	400
48	IE3-355L-4	315	1490	526	96.0	0.90	2.0	7.1	0.8	2.2	95	400
49	IE3-90S-6	0.75	955	1.93	78.9	0.71	2.0	6.0	1.5	2.1	57	400
50	IE3-90L-6	1.1	955	2.69	81.0	0.73	2.0	6.0	1.3	2.1	57	400
51	IE3-100L-6	1.5	955	3.6	82.5	0.73	2.0	6.5	1.3	2.1	61	400
52	IE3-112M-6	2.2	970	5.09	84.3	0.74	2.0	6.6	1.3	2.1	65	400
53	IE3-132S-6	3	970	6.84	85.6	0.74	2.0	6.8	1.3	2.1	69	400
54	IE3-132M1-6	4	970	8.99	86.8	0.74	2.0	6.8	1.3	2.1	69	400

55	IE3-132M2-6	5.5	970	12	88.0	0.75	2.0	7.0	1.3	2.1	69	400
56	IE3-160M-6	7.5	980	15.4	89.1	0.79	2.0	7.0	1.3	2.1	73	400
57	IE3-160L-6	11	980	22	90.3	0.80	2.0	7.2	1.2	2.1	73	400
58	IE3-180L-6	15	980	29.3	91.2	0.81	2.0	7.3	1.2	2.1	73	400
59	IE3-200L1-6	18.5	985	36	91.7	0.81	2.0	7.3	1.2	2.1	73	400
60	IE3-200L2-6	22	985	42.5	92.2	0.81	2.0	7.4	1.2	2.1	73	400
61	IE3-225M-6	30	985	56.2	92.9	0.83	2.0	6.9	1.2	2.1	74	400
62	IE3-250M-6	37	990	68.1	93.3	0.84	2.0	7.1	1.2	2.1	76	400
63	IE3-280S-6	45	990	81.6	93.7	0.85	2.0	7.3	1.1	2.0	78	400
64	IE3-280M-6	55	990	98.1	94.1	0.86	2.0	7.3	1.1	2.0	78	400
65	IE3-315S-6	75	990	136	94.6	0.84	2.0	6.6	1.0	2.0	83	400
66	IE3-315M-6	90	990	161	94.9	0.85	2.0	6.7	1.0	2.0	83	400
67	IE3-315L1-6	110	990	196	95.1	0.85	2.0	6.7	1.0	2.0	83	400
68	IE3-315L2-6	132	990	232	95.4	0.86	2.0	6.8	1.0	2.0	83	400
69	IE3-355M1-6	160	990	281	95.6	0.86	1.8	6.8	1.0	2.0	85	400
70	IE3-355M2-6	200	990	346	95.8	0.87	1.8	6.8	0.9	2.0	85	400
71	IE3-355L1-6	250	990	433	95.8	0.87	1.8	6.8	0.9	2.0	85	400
72	IE3-355L2-6	315	990	552	95.8	0.86	1.8	6.8	0.9	2.0	85	400

## الكتروموتور سه فاز مدل IE4

# IE4

### THREE-PHASE ASYNCHRONOUS MOTOR

STRONG/ STABLE/EFFICIENT/  
ENERGY-SAVING /  
CONSUMPTION-REDUCING



Large torque, low noise, low vibration, well-designed, beautiful, easy to use, cast iron front flange can meet the requirements of various pumps.



Low temperature rise



Large heat dissipation area



long lasting

• It is widely used in fans, water pumps, machine tools, compressors, transportation machinery, etc. to drive various general machinery and equipment. It can also be used in other harsh places such as petroleum, chemical industry, iron, and mining.

## IE series three-phase asynchronous motor

It has reasonable structure, beautiful appearance, high efficiency, low noise, low vibration, high efficiency and energy saving, protection level and high insulation level.





**مشخصات الكتر وموتور IE4**

NO.	Frame reference and size Type	Rated power		Full load current at rated voltage			Full load speed in revolutions per minute Speed r/min	Direct on line starting torque ratio LRT RLT	Direct on line pull out torque ratio BDT RLT	Direct on line starting current ratio LRA RLA	Efficiency η (%)	Power factor Power factor (cosΦ)	Meansound pressure level @1mon no load Noise LwdB(A)	Weight Weight kg	Rotor inertia WK <sup>2</sup> J kgm <sup>2</sup>
		Power		Amps (A)											
		kW	HP	380V	400V	415V									
1	IE4-80M1-2	0.75	1	1.7	1.6	1.5	2910	2.3	2.3	7.5	83.5	0.82	62	24	0.00111
2	IE4-80M2-2	1.1	1.5	2.4	2.2	2.2	2920	2.3	2.3	7.5	85.2	0.83	62	25	0.00145
3	IE4-90S-2	1.5	2	3.1	3	2.9	2930	2.2	2.3	7.6	86.5	0.84	67	27	0.00221
4	IE4-90L-2	2.2	3	4.5	4.2	4.1	2930	2.2	2.3	7.6	88	0.85	67	32	0.00288
5	IE4-100L-2	3	4	5.9	5.6	5.4	2935	2.2	2.3	7.8	89.1	0.87	74	40	0.00466
6	IE4-112M-2	4	5.5	7.7	7.3	7	2940	2.2	2.3	7.8	90	0.88	77	63	0.00644
7	IE4-132S1-2	5.5	7.5	10.4	9.9	9.6	2945	2.0	2.3	7.8	90.9	0.88	79	75	0.01420
8	IE4-132S2-2	7.5	10	14.1	13.4	12.9	2950	2.0	2.3	7.8	91.7	0.88	79	81	0.01675
9	IE4-160M1-2	11	15	20.3	19.3	18.6	2960	2.0	2.3	8.0	92.6	0.89	81	129	0.05506
10	IE4-160M2-2	15	20	27.4	26.1	25.1	2960	2.0	2.3	8.0	93.3	0.89	81	139	0.06299
11	IE4-160L2	18.5	25	33.7	32	30.9	2960	2.0	2.3	8.0	93.7	0.89	81	165	0.07305
12	IE4-180M-2	22	30	40	38	36.6	2965	2.0	2.3	8.0	94	0.89	83	206	0.09103
13	IE4-200L1-2	30	40	54.2	51.5	49.6	2970	2.0	2.3	7.7	94.5	0.89	84	264	0.18362
14	IE4-200L2-2	37	50	66.6	63.3	61	2970	2.0	2.3	7.7	94.8	0.89	84	282	0.19378
15	IE4-225M-2	45	60	80	76	73.2	2975	2.0	2.3	7.8	95	0.9	86	366	0.34021
16	IE4-250M-2	55	75	97	92.6	89.2	2975	2.0	2.3	7.8	95.3	0.9	89	401	0.47312
17	IE4-280S-2	75	100	132	126	121	2980	1.8	2.3	7.6	95.6	0.9	91	548	1.11065
18	IE4-280M-2	90	125	159	151	145	2982	1.8	2.3	7.6	95.8	0.9	91	595	1.17163
19	IE4-315S-2	110	150	193	184	177	2980	1.8	2.3	7.5	96	0.9	92	878	1.52512
20	IE4-315M-2	132	180	232	220	212	2980	1.8	2.3	7.5	96.2	0.9	92	967	2.15291
21	IE4-315L1-2	160	200	277	264	254	2980	1.8	2.3	7.5	96.3	0.91	92	1040	2.44178
22	IE4-315L2-2	200	20	346	329	31	2980	1.8	2.2	7.5	96.5	0.91	92	1134	2.70677
23	IE4-355M-2	250	340	433	411	396	2985	1.6	2.2	7.5	96.5	0.91	100	1683	3.41190
24	IE4-355L-2	315	430	545	518	499	2982	1.6	2.2	7.5	96.5	0.91	100	1880	3.98055
25	IE4-80M2-4	0.75	1	1.8	1.7	1.6	1430	2.3	2.3	7.0	85.7	0.75	56	26	0.00275
26	IE4-90S-4	1.1	1.5	2.5	2.4	2.3	1445	2.3	2.3	7.5	87.2	0.76	59	27	0.00333
27	IE4-90L-4	1.5	2	3.4	3.2	3.1	1450	2.3	2.3	7.5	88.2	0.77	59	30	0.00422
28	IE4-100L1-4	2.2	3	4.6	4.4	4.2	1455	2.3	2.3	7.6	89.5	0.81	64	41	0.00854
29	IE4-100L2-4	3	4	6.1	5.8	5.6	1455	2.3	2.3	7.6	90.4	0.82	64	46	0.01032
30	IE4-112M-4	4	5.5	8.1	7.7	7.4	1460	2.2	2.3	7.8	91.1	0.82	65	62	0.01420
31	IE4-132S-4	5.5	7.5	11	10.4	10	1470	2.2	2.3	7.8	91.9	0.83	71	86	0.03162
32	IE4-132M-4	7.5	10	14.6	13.9	13.4	1470	2.2	2.3	7.8	92.6	0.84	71	96	0.04061
33	IE4-160M-4	11	15	21.1	20	19.3	1475	2.2	2.3	7.8	93.3	0.85	73	139	0.08689
34	IE4-160L-4	15	20	28.2	26.8	25.8	1475	2.2	2.3	7.8	93.9	0.86	73	163	0.11381
35	IE4-180M-4	18.5	25	34.7	33	31.8	1480	2.2	2.3	7.8	94.2	0.86	76	199	0.17122
36	IE4-180L-4	22	30	41.1	39.1	37.7	1480	2.2	2.3	7.8	94.5	0.86	76	224	0.21065
37	IE4-200L-4	30	40	55.8	53.1	51.1	1480	2.2	2.3	7.6	94.9	0.86	76	284	0.32100
38	IE4-225S-4	37	50	68.7	65.2	62.9	1485	2.2	2.3	7.6	95.2	0.86	78	350	0.53287
39	IE4-225M-4	45	60	83.3	79.2	76.3	1485	2.2	2.3	7.6	95.4	0.86	78	380	0.62401
40	IE4-250M-4	55	75	102	96.5	93	1485	2.2	2.3	7.6	95.7	0.86	79	442	0.84594
41	IE4-280S-4	75	100	135	128	124	1490	2.0	2.3	7.5	96	0.88	80	612	2.16232
42	IE4-280M-4	90	125	162	154	148	1490	2.0	2.3	7.5	96.1	0.88	80	697	2.61466
43	IE4-315S-4	110	150	195	185	179	1490	2.0	2.2	7.5	96.3	0.89	88	940	3.69850
44	IE4-315M-4	132	180	234	222	214	1490	2.0	2.2	7.5	96.4	0.89	88	1040	4.29444
45	IE4-315L1-4	160	200	283	269	259	1490	2.0	2.2	7.5	96.6	0.89	88	1142	4.69705
46	IE4-315L2-4	200	20	357	339	327	1490	2.0	2.2	7.5	96.7	0.88	88	1218	5.37943
47	IE4-355M-4	250	340	446	424	409	1490	2.0	2.2	7.5	96.7	0.88	95	1663	7.39245
48	IE4-355L-4	315	430	562	534	515	1490	2.0	2.2	7.5	96.7	0.88	95	1816	9.32586
49	IE4-90S-6	0.75	1	1.9	1.8	1.8	950	2.0	1.8	6.5	82.7	0.71	57	26	0.00422
50	IE4-90L-6	1.1	1.5	2.7	2.6	2.5	955	2.0	1.8	6.5	84.5	0.73	57	32	0.00588
51	IE4-100L-6	1.5	2	3.6	3.5	3.3	960	2.0	1.8	6.8	85.9	0.73	61	40	0.01188
52	IE4-112M-6	2.2	3	5.2	4.9	4.7	965	2.0	1.8	6.8	87.4	0.74	65	50	0.01675



53	IE4-132S-6	3	4	7.0	6.6	6.4	970	2.0	1.8	7.0	88.6	0.74	69	66	0.03529
54	IE4-132M1-6	4	5.5	9.1	8.6	8.3	975	2.0	1.8	7.0	89.5	0.75	69	75	0.04372
55	IE4-132M2-6	5.5	7.5	12.1	11.5	11.1	975	2.0	1.8	7.0	90.5	0.76	69	83	0.05481
56	IE4-160M-6	7.5	10	15.8	15	14.5	980	2.0	1.8	7.2	91.3	0.79	73	126	0.10856
57	IE4-160L-6	11	15	22.6	21.5	20.7	980	2.0	1.8	7.2	92.3	0.8	73	163	0.14307
58	IE4-180L-6	15	20	30.3	28.8	27.7	985	2.0	1.8	7.3	92.9	0.81	73	215	0.25544
59	IE4-200L1-6	18.5	25	37.2	35.3	34	985	2.0	1.8	7.5	93.4	0.81	73	265	0.37729
60	IE4-200L2-6	22	30	44.0	41.8	40.3	985	2.0	1.8	7.5	93.7	0.81	74	288	42911
61	IE4-225M-6	30	40	58.3	55.4	53.4	990	2.0	1.8	7.3	94.2	0.83	76	400	0.63607
62	IE4-250M-6	37	50	70.8	67.3	64.8	990	2.0	1.8	7.3	94.5	0.84	78	424	0.98790
63	IE4-280S-6	45	60	84.8	80.6	77.7	990	2.0	2.0	7.5	94.8	0.85	78	532	1.95011
64	IE4-280M-6	55	75	102	97	94	990	2.0	2.0	7.5	95.1	0.86	83	597	2.38793
65	IE4-315S-6	75	100	139	132	127	990	2.0	2.0	7.5	95.4	0.86	83	807	4.67430
66	IE4-315M-6	90	125	166	158	152	990	2.0	2.0	7.5	95.6	0.86	83	919	5.43629
67	IE4-315L1-6	110	150	203	193	186	990	2.0	2.0	7.5	95.8	0.86	83	1029	6.19829
68	IE4-315L2-6	132	180	243	231	222	990	2.0	2.0	7.5	96	0.86	85	1124	6.96028
69	IE4-355M1-6	160	200	294	279	269	990	1.8	2.0	7.5	95.2	0.86	85	1522	10.80435
70	IE4-355M2-6	200	20	363	345	332	990	1.8	2.0	7.5	96.3	0.87	85	1663	11.82792
71	IE4-355L-6	250	340	452	430	414	990	1.8	2.0	7.5	96.5	0.87	85	1846	14.10252
72	IE4-100L1-8	0.75	1	2.1	2.0	1.9	700	1.8	2.0	6.0	80	0.67	59	34	0.01037
73	IE4-100L2-8	1.1	1.5	3.0	2.8	2.7	700	1.8	2.0	6.0	82.1	0.68	59	36	0.01268
74	IE4-112M-8	1.5	2	3.9	3.7	3.6	710	1.8	2.0	6.0	83.7	0.69	61	48	0.02824
75	IE4-132S-8	2.2	3	5.5	5.2	5.0	720	1.8	2.0	6.5	85.5	0.71	64	72	0.03619
76	IE4-132M-8	3	4	7.2	6.8	6.6	720	1.8	2.0	6.5	86.8	0.73	64	87	0.04553
77	IE4-160M1-8	4	5.5	9.5	9.0	8.7	730	1.8	2.0	6.5	87.9	0.73	68	122	0.08679
78	IE4-160M2-8	5.5	7.5	12.7	12.0	11.6	730	1.9	2.0	6.5	89.1	0.74	68	137	0.10731
79	IE4-160L-8	7.5	10	16.9	16	15.4	30	1.9	2.0	6.5	90.1	0.75	68	163	0.14523
80	IE4-180L-8	11	15	24.1	22.9	22.1	735	1.9	2.0	6.8	91.3	0.76	70	216	0.23398
81	IE4-200L-8	15	20	32.6	30.9	29.8	735	1.9	2.0	6.8	92.1	0.76	73	277	0.39073
82	IE4-225S-8	18.5	25	39.4	37.4	36	735	1.9	2.0	6.8	92.6	0.77	73	321	0.56593
83	IE4-225M-8	22	30	46.1	43.8	42.2	735	1.9	2.0	6.8	93	0.78	73	341	0.63047
84	IE4-250M-8	30	40	61.6	58.5	56.4	735	1.9	2.0	7.0	93.7	0.79	75	435	0.96127
85	IE4-280S-8	37	50	75.6	71.8	69.2	740	1.9	2.0	7.0	94.1	0.79	76	572	1.90179
86	IE4-280M-8	45	60	91.7	87.1	83.9	740	1.9	2.0	7.0	94.4	0.79	76	661	2.22452
87	IE4-315S-8	55	75	109	103	100	740	1.8	2.0	7.0	94.8	0.81	82	1000	5.52095
88	IE4-315M-8	75	100	148	140	135	740	1.8	2.0	7.0	95.2	0.81	82	1094	6.43151
89	IE4-315L1-8	90	125	175	166	160	740	1.8	2.0	7.0	95.5	0.82	82	1206	7.34206
90	IE4-315L2-8	110	150	213	202	195	740	1.8	2.0	7.0	95.7	0.82	82	1311	8.33330
91	IE4-355M1-8	132	180	255	242	234	740	1.8	2.0	7.0	95.9	0.82	90	2346	9.10554
92	IE4-355M2-8	160	200	308	293	282	740	1.8	2.0	7.0	96.1	0.82	90	2522	11.87178
93	IE4-355L-8	200	20	392	373	359	740	1.8	2.0	7.0	96.3	0.83	90	2640	14.17698



الکتروموتور سه فاز Y3VP

Y3VP

HIGH EFFICIENCY AND ENERGY SAVING MOTOR

Simple structure, reliable operation, high efficiency



Give you the silent power world

Starting from energy saving and environmental protection, the three-phase asynchronous motor with high efficiency and energy saving is the current international development trend.

NO NOISE



## مشخصات فنی الکتروموتور Y3VP

	Franme reference and size	Rated power	Full load current at rated voltage	Rated torque	Frequency at constant torque	Frequency at constant power	Direct on line starting torque ratio	Direct on line starting current ratio	Direct on line pull out torque ratio	Pull up torque ratio
NO.	Type	Power (KW)	Amps (A)	(N.m)	(HZ)	(HZ)	LRT/RLT	LRA/RLA	BDT/RLT	SDT/RLT
1	80M1-4	0.55	1.5	3.5	5-50	50-100	2	10	2.8	1.7
2	80M2-4	0.75	2	4.7	5-50	50-100	2	10	2.8	1.6
3	90S-4	1.1	2.8	7	5-50	50-100	2	10	2.8	1.6
4	90L-4	1.5	3.7	9.5	5-50	50-100	2	10	2.8	1.6
5	100L1-4	2.2	5.1	14	5-50	50-100	2	10	2.8	1.5
6	100L2-4	3	6.8	19	5-50	50-100	2	10	2.8	1.5
7	112M-4	4	8.7	25.4	5-50	50-100	2	10	2.8	1.5
8	132S-4	5.5	11.4	35	5-50	50-100	2	10	2.8	1.4
9	132M-4	7.5	15.3	47.7	5-50	50-100	2	10	2.8	1.4
10	160M-4	11	22.1	70	5-50	50-100	2	10	2.8	1.4
11	160L-4	15	30.1	95.5	5-50	50-100	2	10	2.8	1.4
12	180M-4	18.5	35.4	117.1	5-50	50-100	2	10	2.8	1.2
13	180L-4	22	41.6	140.9	5-50	50-100	2	10	2.8	1.2
14	200L-4	30	55.9	190.9	5-50	50-100	2	10	2.8	1.2
15	225S-4	37	68.2	235.5	5-50	50-100	2	10	2.8	1.2
16	225M-4	45	82.5	286.4	5-50	50-100	2	10	2.8	1.1
17	250M-4	55	101	350.1	3-50	50-100	1.7	10	2.8	1.1
18	280S-4	75	132.3	477.1	3-50	50-100	1.7	10	2.8	1
19	280M-4	90	157.4	572.9	3-50	50-100	1.7	10	2.8	1
20	315S-4	110	191.4	700.2	3-50	50-100	1.7	10	2.8	1
21	315M-4	132	227.6	840.3	3-50	50-100	1.7	10	2.8	1
22	315L1-4	160	274.2	1018.5	3-50	50-100	1.7	10	2.8	1
23	315L2-4	200	341.6	1273.2	3-50	50-100	1.7	10	2.8	0.9



## الکتروموتور سه فاز مدل Y3DT



### Y3DT

#### THREE-PHASE ASYNCHRONOUS MOTOR

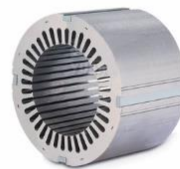
GOOD STARTING PERFORMANCE,  
SMALL SIZE, LIGHT WEIGHT,  
RELIABLE OPERATION.

IE2    



#### Seiko bearing

To ensure the service life of the motor,  
Dustproof effect of high strength carbon  
copper material.



#### High quality silicon steel sheet

High quality cold rolled silicon steel sheet/  
low temperature rise/long life

The design and manufacture of this series  
of motors combine the advantages of  
similar motors at home and abroad and fully  
comply with the standards of International  
Electrotechnical Commission. This motor  
uses a variable number of poles to allow for  
speed adjustment.



#### Seiko quality Copper is the only thing

The copper coils/powerful

## مشخصات فنی Y3DT

Frame reference and size		Rated power	Full load current at rated voltage	Efficiency	Power factor	Direct on line starting torque ratio	Direct on line pull out torque ratio	Direct on line starting current ratio
Type	Poles	Output (KW)	Amps (A)	$\eta$ (%)	Power factor ( $\cos \phi$ )	LRT/RLT	BDT/RLT	LRA/RLA
80M1	2	0.75	1.86	68	0.82	2	1.8	7.5
	4	0.17	65	58	0.62	1.4	1.8	5.5
80M2	2	0.95	2.33	70	0.81	2	1.8	7.5
	4	0.25	0.87	64	0.65	1.4	1.8	5.5
90S	2	1.4	3.45	71	0.83	2	1.8	7.5
	4	0.3	0.85	70	0.72	1.4	1.8	5.5
90L	2	1.9	4.27	75	0.86	2	1.8	7.5
	4	0.4	1.08	72	0.73	1.4	1.8	5.5
100L1	2	2.5	5.25	82	0.87	2	1.8	7.5
	4	0.65	1.8	74	0.72	1.4	1.8	5.5
100L2	2	3.1	6.39	82	0.87	2	1.8	7.5
	4	0.8	2.17	76	0.72	1.4	1.8	5.5
112M	2	4.4	9.15	82	0.88	2	1.8	7.5
	4	1.1	2.42	80	0.74	1.4	1.8	5.5
132S	2	5.9	11.68	83	0.91	1.9	1.8	7.5
	4	1.4	3.5	80	0.74	1.3	1.8	5.5
132M	2	8	15.29	85	0.91	1.9	1.8	7.5
	4	2	4.65	83	0.77	1.3	1.8	5.5
160M	2	12.5	24.04	86	0.91	1.9	1.8	7.5
	4	2.8	6.56	85	0.75	1.3	1.8	5.5
160L	2	16.5	30.98	87	0.91	1.9	1.8	7.5
	4	3.8	8.64	86	0.76	1.3	1.8	5.5
90S	4	1.1	2.86	70	0.78	1.8	1.8	7
	6	0.32	1.09	63	0.66	1.6	1.8	6
90L	4	1.4	3.4	72	0.81	1.8	1.8	7
	6	0.45	1.43	68	0.66	1.6	1.8	6
100L1	4	2.2	5.22	80	0.79	1.8	1.8	7
	6	0.7	2.15	73	0.66	1.6	1.8	6
100L2	4	2.5	5.96	81	0.78	1.8	1.8	7
	6	0.9	2.86	74	0.67	1.6	1.8	6
112M	4	3.2	7.03	82	0.82	1.8	1.8	7
	6	1.1	3.09	78	0.68	1.6	1.8	6
132S	4	4.7	10	84	0.83	1.8	1.8	7
	6	1.5	4.06	81	0.68	1.6	1.8	6
132M	4	6.7	13.71	85	0.85	1.8	1.8	7
	6	2.2	5.7	83	0.69	1.6	1.8	6
160M	4	9.5	19.3	87	0.84	1.8	1.8	7.5
	6	3.1	7.91	83	0.69	1.6	1.8	7
160L	4	12	24.36	88	0.84	1.8	1.8	7.5
	6	4	10	83	0.69	1.6	1.8	7
180M	4	15.5	31.4	87	0.84	1.5	1.8	7.5
	6	5.1	12.06	81	0.72	1.5	1.8	7
180L	4	18	37.14	87	0.85	1.5	1.8	7.5
	6	6.2	14.33	81	0.74	1.5	1.8	7
200L	4	24	48.2	88	0.85	1.5	1.8	7.5
	6	8.5	19.1	83	0.77	1.5	1.8	7
225S	4	33	60.7	89	0.86	1.5	1.8	7.5
	6	11	8.2	84	0.84	1.5	1.8	7
225M	4	38	71.3	90	0.86	1.5	1.8	7.5
	6	13	27.3	85	0.85	1.5	1.8	7
250M	4	47	84.2	90	0.89	1.5	1.8	7.5
	6	16	32.3	85	0.87	1.5	1.8	7
280S	4	55	99.6	90	0.88	1.5	1.8	7.5
	6	18.5	37.3	85	0.86	1.5	1.8	7
280M1	4	70	125	91	0.88	1.5	1.8	7.5
	6	25	48.4	87	0.87	1.5	1.8	7

280M2	4	84	150.6	91	0.88	1.5	1.8	7.5
	6	28	54.8	87	0.87	1.5	1.8	7
315S	4	95	177.4	91	0.86	1.5	1.8	7.5
	6	32	65.3	89	0.79	1.5	1.8	7
315M	4	115	217.5	92	0.86	1.5	1.8	7.5
	6	38	77.9	90	0.78	1.5	1.8	7
315L1	4	135	260	92	0.86	1.5	1.8	7.5
	6	45	90.5	90	0.8	1.5	1.8	7
315L2	4	160	294	93	0.86	1.5	1.8	7.5
	6	55	113.4	91	0.8	1.5	1.8	7
90S	4	1	2.44	70	0.82	1.9	1.8	7.5
	8	0.22	0.92	55	0.62	1.5	1.8	5
90L	4	1.3	3.1	72	0.82	1.9	1.8	7.5
	8	0.3	1.18	58	0.63	1.5	1.8	5
100L1	4	2	4.68	80	0.8	1.9	1.8	7.5
	8	0.55	0.55	65	0.61	1.5	1.8	5
100L2	4	2.4	5.48	80	0.81	1.9	1.8	7.5
	8	0.65	2.37	66	0.61	1.5	1.8	5
112M	4	3.2	7.4	83	0.78	1.9	1.8	7.5
	8	0.9	3.24	71	0.59	1.5	1.8	5
132S	4	4.5	9.68	84	0.82	2	1.8	7.5
	8	1.1	3.68	75	0.59	1.2	1.8	5
132M	4	6.3	13.13	85	0.83	2	1.8	7.5
	8	1.5	4.84	78	0.59	1.2	1.8	5
160M	4	8.9	18.14	85	0.85	2	1.8	7.5
	8	2	5.34	82	0.67	1.2	1.8	5
160L	4	12	23.47	86	0.86	2	1.8	7.5
	8	2.7	6.9	84	0.67	1.2	1.8	5
180M	4	16	31.77	88	0.85	2	1.8	7.5
	8	4	10.83	84	0.65	1.2	1.8	5
180L	4	19.5	38.56	89	0.85	2	1.8	7.5
	8	5	13.32	85	0.66	1.2	1.8	5
200L	4	29	56.8	90	0.85	2	1.8	7.5
	8	7.5	19.57	87	0.66	1.2	1.8	5
225M	4	40	74.57	91	0.88	2	1.8	7.5
	8	9.5	25.43	88	0.64	1.3	1.8	5
250M	4	52	97.29	91	0.87	2	1.8	7.5
	8	14.5	36.97	88	0.66	1.3	1.8	5
280S	4	65	122.74	91	0.87	2	1.8	7.5
	8	17	41.73	89	0.68	1.3	1.8	5
280M	4	75	137.39	91	0.88	2	1.8	7.5
	8	18.5	43.86	90	0.7	1.3	1.8	5
315S	4	92	174.76	91	0.86	2	1.8	7.5
	8	25	58.71	90	0.7	1.3	1.8	5



315M	6	90	171.6	92	0.85	1.5	1.8	7
	8	45	90.4	91	0.8	1.5	1.8	6
315L1	6	110	209.5	92	0.85	1.5	1.8	7
	8	55	115.7	91	0.78	1.5	1.8	6
315L2	6	132	252	92	0.85	1.5	1.8	7
	8	66	137.4	91	0.78	1.5	1.8	6
112M	4	2.3	5.88	79	0.73	2	1.8	7.5
	6	0.8	3.16	65	0.57	1.4	1.8	6.5
	8	0.6	2.74	61	0.53	1.3	1.8	4
132S	4	3.1	4.14	81	0.79	2	1.8	7.5
	6	1.1	3.9	71	0.6	1.4	1.8	6.5
	8	0.8	3.06	68	0.57	1.3	1.8	4
132M	4	4.5	9.76	83	0.82	2	1.8	7.5
	6	1.5	4.66	74	0.65	1.4	1.8	6.5
	8	1.1	3.92	72	0.57	1.3	1.8	4
160M	4	7.5	15.98	84	0.82	1.8	1.8	7.5
	6	2.6	7.33	79	0.67	1.4	1.8	6.5
	8	1.5	4.79	79	0.58	0.95	1.8	4
160L	4	10.2	20.64	86	0.85	1.8	1.8	7.5
	6	3.5	9.46	81	0.68	1.4	1.8	6.5
	8	2	6.03	81	0.6	0.95	1.8	4
180M	4	13	24.22	86	0.9	1.8	1.8	8
	6	4.5	7.72	80	0.8	1.4	1.8	7.5
	8	2.6	10.62	80	0.63	0.95	1.8	5.5
180L	4	16	29.63	87	0.9	1.8	1.8	8
	6	6	13.56	81	0.81	1.4	1.8	7.5
	8	3.3	9.69	81	0.63	0.95	1.8	5.5
200L	4	22	40.56	87	0.9	1.8	1.8	8
	6	8	17.75	82	0.82	1.4	1.8	7.5
	8	4.5	13.23	82	0.62	0.95	1.8	5.5
225S	4	28	53.32	89	0.88	1.8	1.8	8
	6	10	21.1	83	0.85	1.4	1.8	7.5
	8	5.5	13.43	85	0.7	1.1	1.8	5.5
225M	4	34	63.11	89	0.89	1.8	1.8	8
	6	12	24.71	83	0.86	1.4	1.8	7.5
	8	7.5	17.22	87	0.74	1.1	1.8	5.5
250M	4	44	78.09	90	0.92	1.8	1.8	8
	6	15.5	32.12	85	0.85	1.4	1.8	7.5
	8	10	22.58	88	0.75	1.1	1.8	5.5
280S	4	55	98.47	90	0.92	1.8	1.8	8
	6	18	37	85	0.85	1.4	1.8	7.5
	8	12	27.33	88	0.74	1.1	1.8	5.5
280M	4	66	116.88	91	0.92	1.8	1.8	8
	6	21	42.54	86	0.86	1.4	1.8	7.5
	8	15	32.79	89	0.76	1.1	1.8	5.5
315S	4	75	136.34	90	0.91	1.8	1.8	8
	6	27	55.27	87	0.84	1.4	1.8	7.5
	8	19	43.8	89	0.73	1.3	1.8	5.5