



MLFB-Ordering data: 1LE1002-1CC33-4FA4

Motor type: 1AV1133C

Client order no.:

Order no.:

Offer no.:

Remarks:

Item no.:

Consignment no.:

Project:

U [V]	Δ / Y	f [Hz]	P [kW]	P [hp]	I [A]	n [1/min]	M [Nm]	NOM. EFF at ... load [%]			Power factor at ... load			I_A/I_N I_f/I_N	M_A/M_N T_f/T_N	M_K/M_N T_B/T_N	IE-CL
								4/4	3/4	2/4	4/4	3/4	2/4				
400	Δ	50	5.50	- / -	12.70	955	55.0	83.1	84.0	82.8	0.75	0.67	0.55	5.7	2.7	3.0	IE1
690	Y	50	5.50	- / -	7.40	955	55.0	83.1	84.0	82.8	0.75	0.67	0.55	5.7	2.7	3.0	IE1
460	Δ	60	6.30	- / -	12.20	1155	52.0	85.0	85.7	84.8	0.76	0.69	0.57	6.2	2.7	3.1	IE1
IM B5 / IM 3001			FS 132 M		48 kg	IP55	IEC/EN 60034		IEC, DIN, ISO, VDE, EN								

Mechanical data

Sound pressure level 50Hz/60Hz (load)	63 dB(A) ¹⁾ 67 dB(A) ¹⁾
Moment of inertia	0.027 kg m ²
Bearing DE NDE	6208 2Z C3 6208 2Z C3
Bearing lifetime	40000 h
Lubricants	Esso Unirex N3
Regreasing device	No
Grease nipple	- / -
Type of bearing	Preloaded bearing DE
Condensate drainage holes	No
External earthing terminal	
Vibration severity grade	A
Insulation	155(F) to 130(B)
Duty type	S1
Direction of rotation	bidirectional
Frame material	aluminum
Data of anti condensation heating	-/-
Coating (paint finish)	Standard paint finish C2
Color, paint shade	RAL7030
Motor protection	(A) without (Standard)
Method of cooling	IC411 - self ventilated, surface cooled

Environmental conditions

Ambient temperature	-20 °C - +40 °C
Altitude above sea level	1000 m

Notes

I_A/I_N = locked rotor current / current nominal M_A/M_N = break down torque / nominal torque
 M_K/M_N = locked rotor torque / torque nominal 1) Value is valid only for DOL operation with motor design IC411

Terminal box

Terminal box position	top
Material of terminal box	Aluminium
Type of terminal box	TB1 H00
Contact screw thread	M4
Max. cross-sectional area	6.0 mm ²
Cable diameter from ... to ...	11.0 mm - 21.0 mm
Cable entry	2xM32x1,5
Cable gland	2 plugs

Special design (0)

Tel: 48 0000 49 (60 Lines)

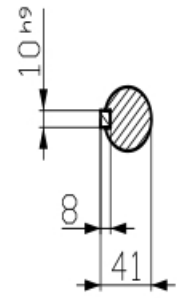
Confidencial, reproducción, disseminación and/or editing of this document as well as utilization of its contents and communication thereof to others without express authorization are prohibited. Offenders will be held liable for damages. All rights reserved. © Siemens AG 2018. Patent rights reserved.

Transmissie, reproductie, verspreiding en/of wijziging van dit document, evenals het gebruik van de inhoud daarvan en het verspreiden daarvan, zonder uitdrukkelijke toestemming van Siemens AG is niet toegestaan.

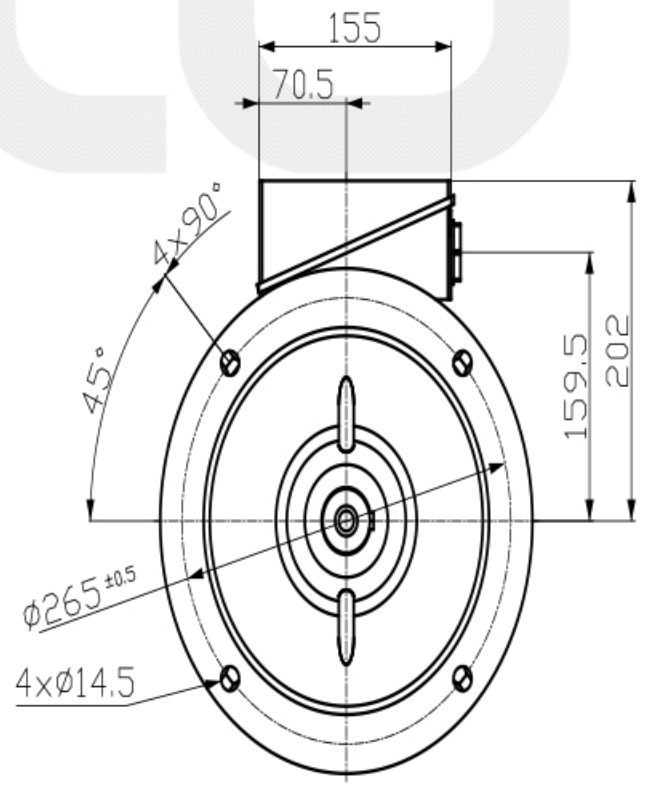
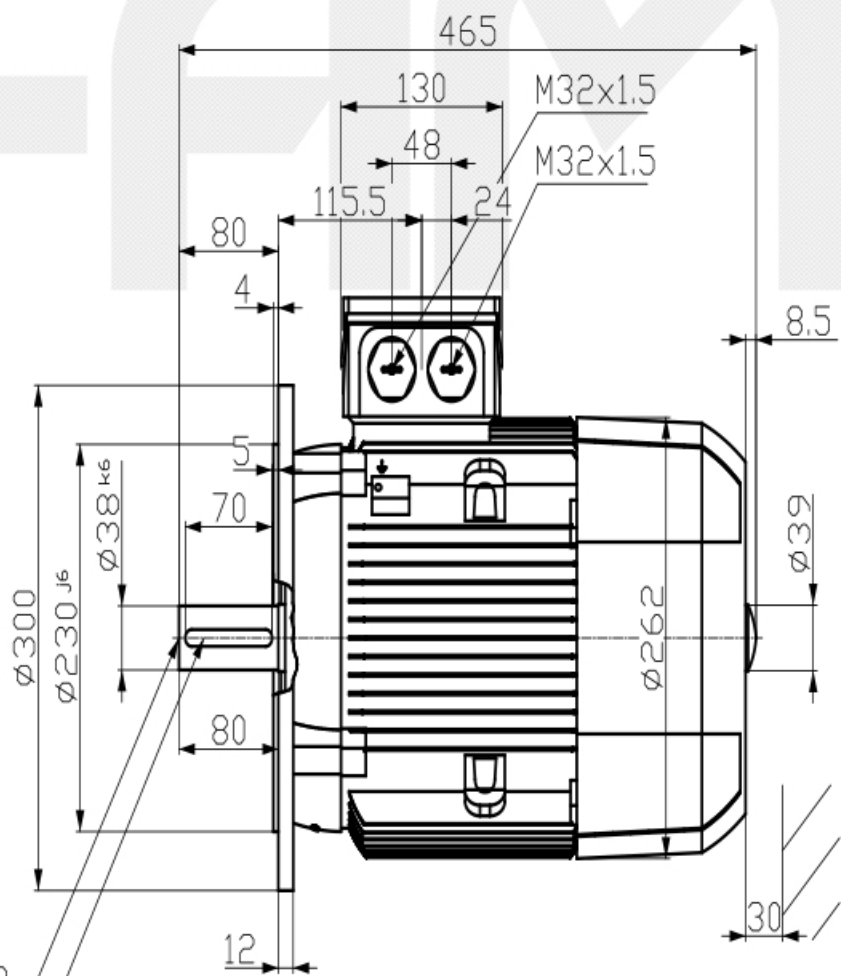
Weitergabe sowie Vervielfältigung, Verbreitung und/oder Bearbeitung dieses Dokuments, Verwertung und Mitteilung seines Inhaltes sind verboten, soweit nicht ausdrücklich gestattet. Zuwiderhandlungen verpflichten zu Schadenersatz. Alle Rechte vorbehalten. © Siemens AG 2018.

Confidencial como secreto de empresa. Nos reservamos todos los derechos. Comunicado como secreto empresarial. Reservados todos os direitos.

Confidantia, reproducere, distribuere și/sau modificarea acestui document, precum și utilizarea conținutului și comunicarea acestuia altora fără autorizație expresă sunt interzise.



DIN 332-DR M12
DIN 6885-1



Tel: 48 0000 49 (60 Lines)

Tolerance	Surface	Material	Weight	Scale
			-	mm
1LE1002-1CC33-4FA4	Author	Dimensional drawing Maßzeichnung		
	Creator DTK			
	Approval			
	Department			
	Change Order	MFB	Doc. Type	
	Doc. State	1/21/19	Item No.	Page Size A3
	Revision	Index RS	Doc. No.	1st Language en 2nd Language de
© Siemens AG 2018	Project No.	-	Ref. No.	Sheet 1 of 1