



MLFB-Ordering data: 1LE1502-2BB23-4AA4

Motor type: 1CV1222B

Client order no.:

Order no.:

Offer no.:

Remarks:

Item no.:

Consignment no.:

Project:

U [V]	Δ / Y	f [Hz]	P [kW]	P [hp]	I [A]	n [1/min]	M [Nm]	NOM. EFF at ... load [%]			Power factor at ... load			I _A /I _N I _f /I _N	M _A /M _N T _f /T _N	M _K /M _N T _B /T _N	IE-CL
								4/4	3/4	2/4	4/4	3/4	2/4				
400	Δ	50	45.00	- / -	82.00	1475	291.0	91.7	92.1	91.7	0.86	0.83	0.74	7.2	2.6	3.2	IE1
690	Y	50	45.00	- / -	47.50	1475	291.0	91.7	92.1	91.7	0.86	0.83	0.74	7.2	2.6	3.2	IE1
460	Δ	60	52.00	- / -	81.00	1770	281.0	93.0	93.4	92.9	0.87	0.84	0.77	7.2	2.6	3.2	IE1
IM B3 / IM 1001			FS 225 M		290 kg	IP55	IEC/EN 60034		IEC, DIN, ISO, VDE, EN								

Mechanical data

Sound pressure level 50Hz/60Hz (load)	71 dB(A) ¹⁾	74 dB(A) ¹⁾
Moment of inertia	0.45 kg m ²	
Bearing DE NDE	6213 Z C3	6213 Z C3
Bearing lifetime	40000 h	
Lubricants	Esso Unirex N3	
Regreasing device	No	
Grease nipple	- / -	
Type of bearing	Locating bearing NDE	
Condensate drainage holes	Yes (standard)	
External earthing terminal	Yes (standard)	
Vibration severity grade	A	
Insulation	155(F) to 130(B)	
Duty type	S1	
Direction of rotation	bidirectional	
Frame material	cast iron	
Data of anti condensation heating	-/-	
Coating (paint finish)	Standard paint finish C2	
Color, paint shade	RAL7030	
Motor protection	(A) without (Standard)	
Method of cooling	IC411 - self ventilated, surface cooled	

Environmental conditions

Ambient temperature	-20 °C - +40 °C
Altitude above sea level	1000 m

Notes

I_A¹⁾ = locked rotor current / current nominal M_K/M_N = break down torque / nominal torque
M_A/M_N = locked rotor torque / torque nominal 1) Value is valid only for DOL operation with motor design IC411

Terminal box

Terminal box position	top
Material of terminal box	cast iron
Type of terminal box	TB1 L01
Contact screw thread	M8
Max. cross-sectional area	35.0 mm ²
Cable diameter from ... to ...	27.0 mm - 35.0 mm
Cable entry	2xM50x1,5
Cable gland	2 plugs

Special design (0)

Tel: 48 0000 49 (60 Lines)

Confidential, reproduction, dissemination and/or editing of this document as well as utilization of its contents and communication thereof to others without express authorization are prohibited. Offenders will be held liable for damages. Siemens AG, Munich, Germany. Patent rights reserved.

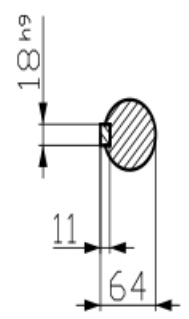
Tous droits réservés. Toute réimpression, toute diffusion, toute modification, toute utilisation non autorisée ainsi que la communication de ce document, même partielle, sans autorisation écrite préalable sont formellement interdites. Les auteurs acceptent toute responsabilité juridique. Siemens AG, Munich, Germany.

Alle Rechte vorbehalten. Nachdruck, Vervielfältigung und Verbreitung, auch auszugsweise, ist ohne schriftliche Genehmigung der Siemens AG, München.

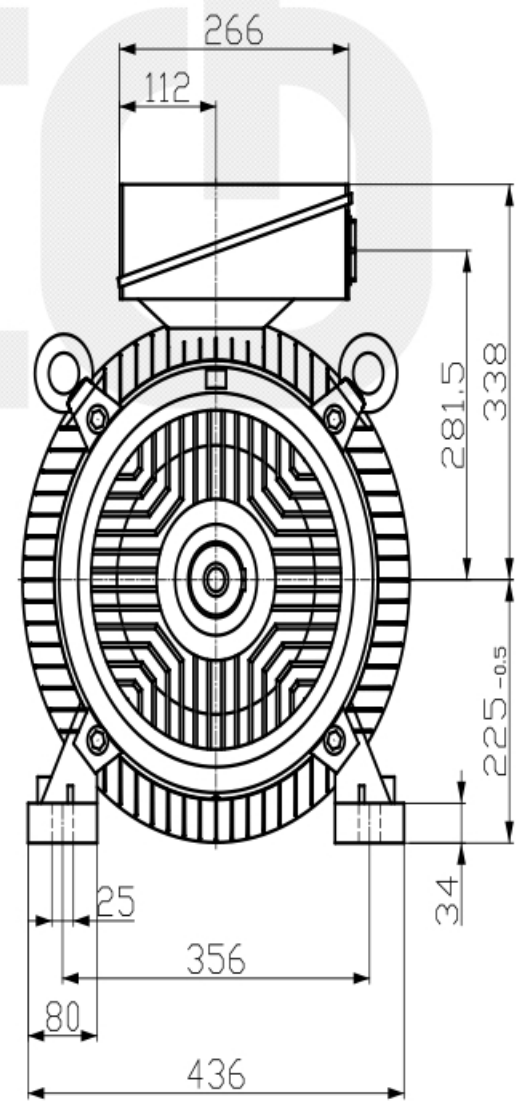
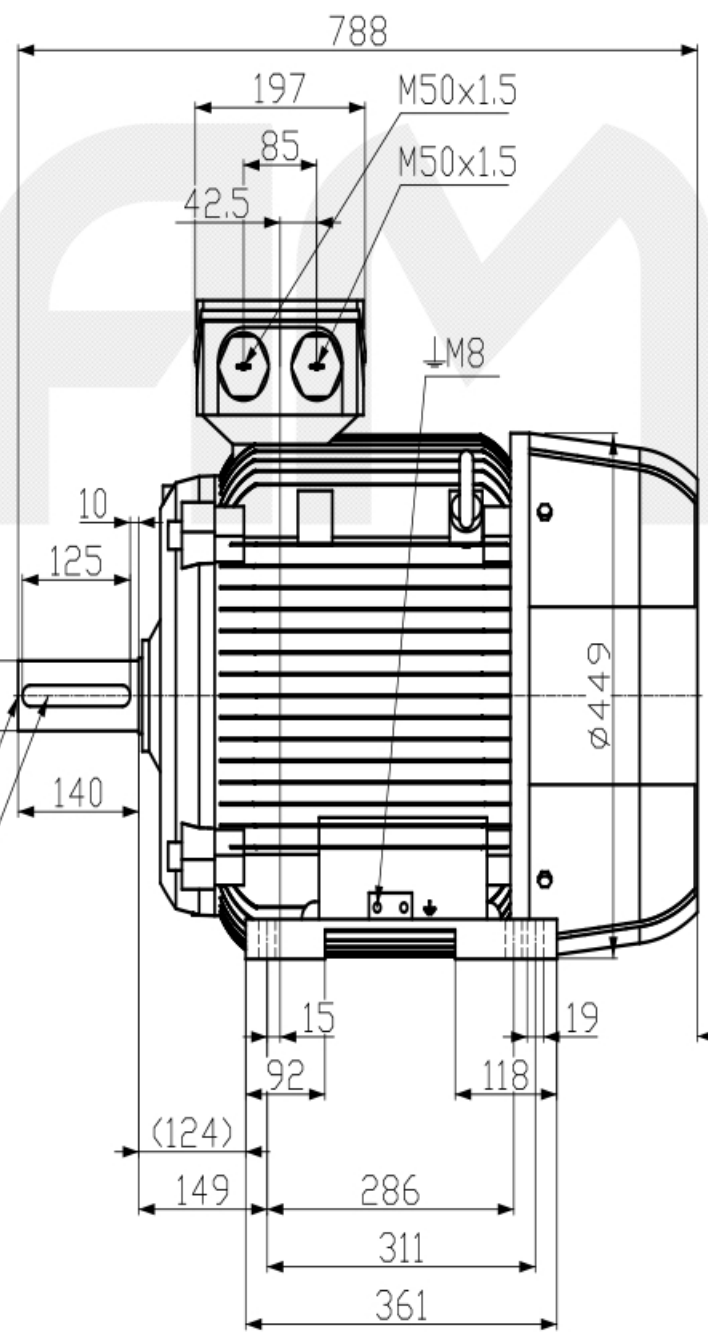
Todos los derechos reservados. Toda reproducción, difusión o modificación de este documento, así como la comunicación de su contenido o la explotación de sus contenidos sin la debida autorización quedan expresamente prohibidos. Los infractores serán responsables de los daños ocasionados. Siemens AG, Munich, Germany.

Confidencial como secreto de empresa. Nos reservamos todos los derechos.

Confidantiale als geheime informatie. Het verspreiden van deze informatie is niet toegestaan. Siemens AG, München.



DIN 332-DS M20
DIN 6885-1



Tolerance	Surface	Material	Weight	Scale
				mm
1LE1502-2BB23-4AA4	Author	Dimensional drawing		
	Creator	Maßzeichnung		
	Approval			
	Department			
	Change Order	MFB	Doc Type	
	Doc State	1/22/19	Item No	Page Size A3
	Revision	Index IS	Doc No	1st Language en 2nd Language de
© Siemens AG 2018	Project No	-	Ref No	Sheet 1 of 1

Tel: 48 0000 49 (60 Lines)