

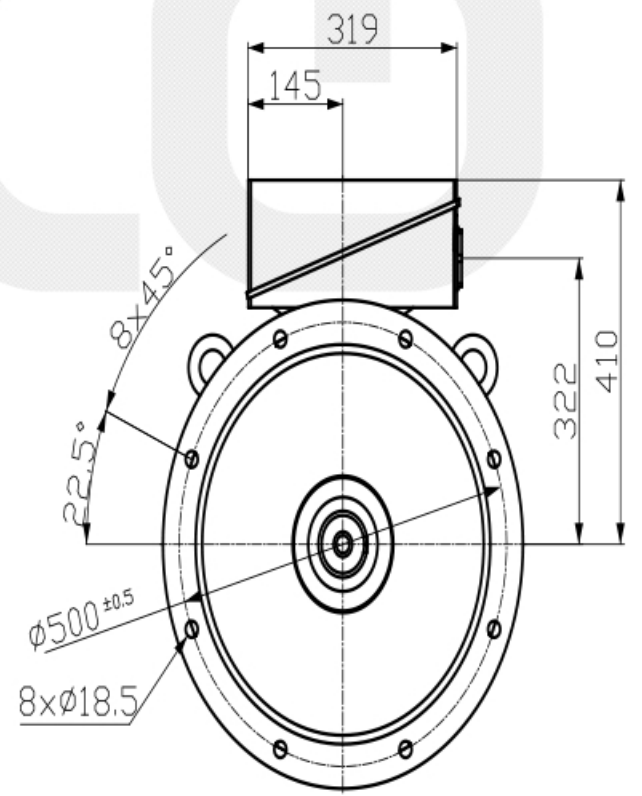
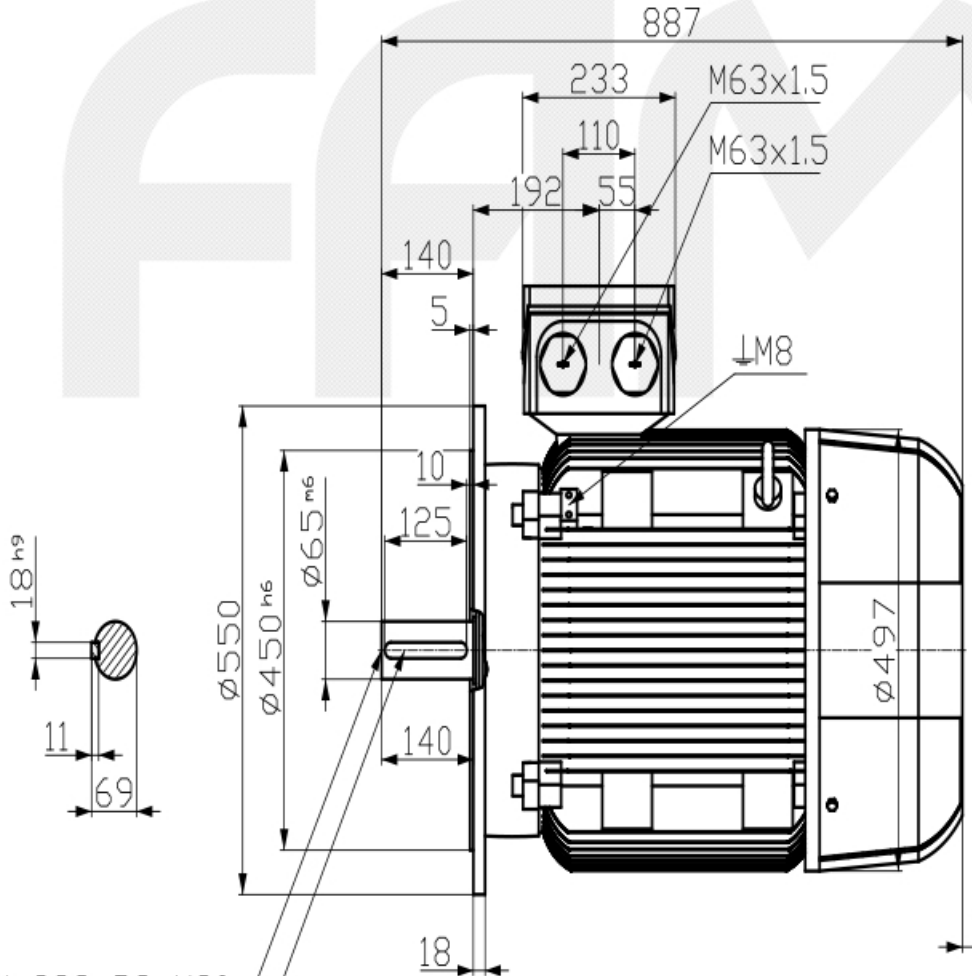
Confidencial, reproducción, disseminación o uso no autorizado de este documento es prohibido. Reservados todos los derechos. No se permite la explotación económica ni la transformación de esta obra. Queda permitida la impresión en su totalidad.

Transmittal, reproduction, dissemination and/or editing of this document as well as utilization of its contents and communication thereof to others without express authorization are prohibited. Offenders will be held liable for any damages. All rights are reserved. No part of this document may be reproduced or transmitted in any form or by any means electronic or mechanical, including photocopying and recording, or by any information storage or retrieval system, without express prior written permission from Siemens AG.

Weitergabe sowie Vervielfältigung, Verbreitung und/oder Bearbeitung dieses Dokuments, Verwertung und Mitteilung seines Inhaltes sind verboten, soweit nicht ausdrücklich gestattet. Zuwiderhandlungen verpflichten zu Schadenersatz. Alle Rechte vorbehalten.

Confidencial como secreto de empresa. Nos reservamos todos los derechos.

Confidantia et secreto clientelae. Tous droits réservés.



DIN 332-DS M20  
 DIN 6885-1

**Tel: 48 0000 49 (60 Lines)**

Tolerance	Surface	Material	Weight	Scale
			-	mm
1LE1502-2CB23-4FA4	Author	Dimensional drawing Maßzeichnung		
	Creator DTK			
	Approval			
	Department			
	Change Order	MFB	Doc Type	
	Doc State 1/22/19	Item No	Paper Size A3	
	Revision Inden RS	Doc No	1st Language en 2nd Language de	
© Siemens AG 2018	Project No -	Ref No -	Sheet 1 of 1	



**MLFB-Ordering data:** 1LE1502-2CB23-4FA4

**Motor type:** 1CV1252B

Client order no.:

Order no.:

Offer no.:

Remarks:

Item no.:

Consignment no.:

Project:

U [V]	Δ / Y	f [Hz]	P [kW]	P [hp]	I [A]	n [1/min]	M [Nm]	NOM. EFF at ... load [%]			Power factor at ... load			I <sub>A</sub> /I <sub>N</sub> I <sub>f</sub> /I <sub>N</sub>	M <sub>A</sub> /M <sub>N</sub> T <sub>f</sub> /T <sub>N</sub>	M <sub>K</sub> /M <sub>N</sub> T <sub>B</sub> /T <sub>N</sub>	IE-CL
								4/4	3/4	2/4	4/4	3/4	2/4				
400	Δ	50	55.00	- / -	101.00	1475	356.0	92.1	92.5	92.1	0.85	0.82	0.74	6.1	2.4	2.6	IE1
690	Y	50	55.00	- / -	59.00	1475	356.0	92.1	92.5	92.1	0.85	0.82	0.74	6.1	2.4	2.6	IE1
460	Δ	60	63.00	- / -	100.00	1775	339.0	93.0	93.3	92.7	0.85	0.83	0.76	6.1	2.5	2.6	IE1
IM B5 / IM 3001			FS 250 M			360 kg		IP55		IEC/EN 60034			IEC, DIN, ISO, VDE, EN				

### Mechanical data

Sound pressure level 50Hz/60Hz (load)	70 dB(A) <sup>1)</sup>	72 dB(A) <sup>1)</sup>
Moment of inertia	0.69 kg m <sup>2</sup>	
Bearing DE   NDE	6215 Z C3	6215 Z C3
Bearing lifetime	40000 h	
Lubricants	Esso Unirex N3	
Regreasing device	No	
Grease nipple	- / -	
Type of bearing	Locating bearing NDE	
Condensate drainage holes	Yes (standard)	
External earthing terminal	Yes (standard)	
Vibration severity grade	A	
Insulation	155(F) to 130(B)	
Duty type	S1	
Direction of rotation	bidirectional	
Frame material	cast iron	
Data of anti condensation heating	-/-	
Coating (paint finish)	Standard paint finish C2	
Color, paint shade	RAL7030	
Motor protection	(A) without (Standard)	
Method of cooling	IC411 - self ventilated, surface cooled	

### Environmental conditions

Ambient temperature	-20 °C - +40 °C
Altitude above sea level	1000 m

### Notes

I<sub>A</sub><sup>1)</sup> = locked rotor current / current nominal    M<sub>K</sub>/M<sub>N</sub> = break down torque / nominal torque  
M<sub>A</sub>/M<sub>N</sub> = locked rotor torque / torque nominal    1) Value is valid only for DOL operation with motor design IC411

### Terminal box

Terminal box position	top
Material of terminal box	cast iron
Type of terminal box	TB1 N01
Contact screw thread	M10
Max. cross-sectional area	120.0 mm <sup>2</sup>
Cable diameter from ... to ...	34.0 mm - 42.0 mm
Cable entry	2xM63x1,5
Cable gland	2 plugs

### Special design (0)

**Tel: 48 0000 49 (60 Lines)**