

## SCPM series centrifugal pump

### Applications and installation

The SCPM series pumps are high-efficient, power-saving and compact in structure, convenient to operate and maintain. The hydraulic characteristic is with high head and small capacity. They are suitable for both domestic and industrial applications to convey clean water and non-aggressive chemical liquid, also can be applied to supply the water for garden, hotel, villas and agricultural irrigation, etc.

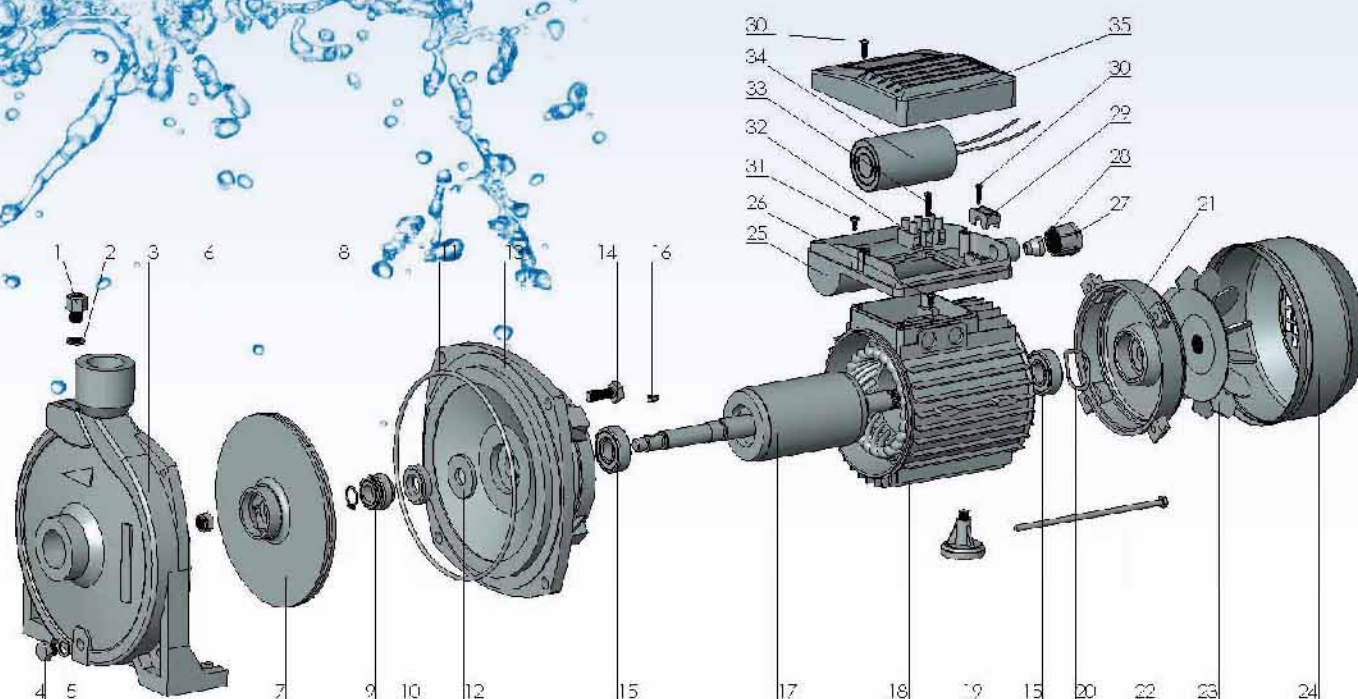
**Pumps should be installed in a covered area, protected against the weather.**

### Construction features

Pump Body: cast iron  
Motor Housing: aluminum  
Shaft: 45# steel/stainless steel  
Impeller: brass /S/S optional  
Motor: closed, externally ventilated  
Insulation Class: B/F  
Protection Class: IP44/IP54  
Duty: continuously rated  
Mechanical Seal: ceramic steatite/ metalized carbon

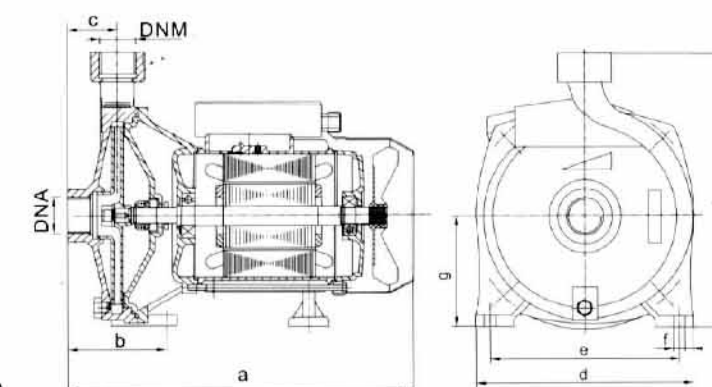
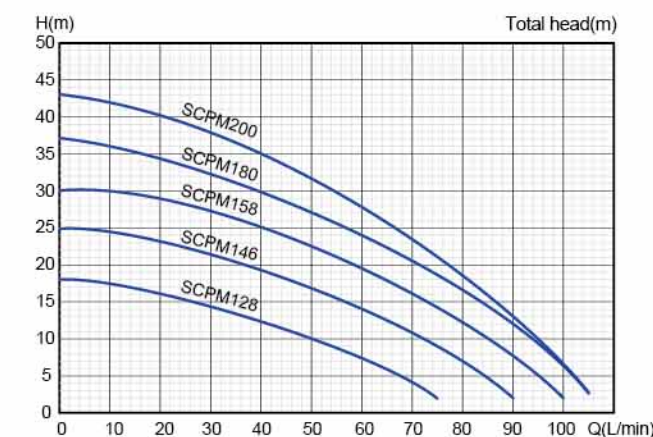
### Operating limitations

Max ambient temperature up to 40°C  
Max fluid temperature up to 80°C  
Max pressure up to 10 bar



## Material Data

NO.	Description	NO.	Description	NO.	Description
1	Plug	13	Front cover	25	Terminal box place
2	Gasket	14	Screw	26	Screw
3	Pump body	15	Bearing	27	Terminal box nut
4	Plug	16	Key	28	Fairlead
5	Gasket	17	Rotor	29	Cable holder
6	Nut	18	Motor housing with stator	30	Screw
7	Impeller	19	Support foot	31	Screw
8	Snap ring	20	Wave-form washer	32	Terminal block
9	Rolling mechanical seal	21	End cover	33	Screw
10	Fixed mechanical seal	22	Tie-rod	34	Capacitor
11	O-Ring	23	Fan	35	Terminal box cover
12	Drop guard	24	Fan cover		



### SCPM

Model	HP	KW	DNA/DNM	Suct. Max m	Q. Max L/min	H. Max m	Q. L/min	0	20	40	60	75	80	90	100	105	Weight Kg
SCPM128	0.5	0.37	1"/1"	9	75	18	H(m)	18	16	12	8	2					9
SCPM146	0.75	0.55	1"/1"	9	90	25		25	23	19	14	9	7	2			13
SCPM158	1	0.75	1"/1"	9	100	30		30	28	25	20	14	12	8	2		14
SCPM180	1.5	1.1	1"/1.25" / 1"	9	105	37		37	34	30	24	18	17	12	7	3	19
SCPM200	2	1.5	1"/1.25" / 1"	9	105	43		43	40	35	28	21	19	13	7	3	20

### Overall and mounting dimension

Model	Dimensions (mm)										Package Dimension		
	DNA	DNM	a	b	c	d	e	f	g	h	A	B	H
SCPM128	1"	1"	263	82	45	175	136	10	88	220	295	195	240
SCPM146	1"	1"	294	82	47	175	142	10	90	224	330	210	265
SCPM158	1"	1"	310	82	43	192	161	10	95	248	330	210	265
SCPM180	1" / 1.25"	1"	345	82	56	215	180	12	112	278	380	255	320
SCPM200	1" / 1.25"	1"	350	82	55	230	200	12	120	300	380	255	320



## SCP series centrifugal pump

### Applications and installation

The SCP series pumps are high-efficient, power-saving and compact in structure, convenient to operate and maintain. The hydraulic characteristic is with high head and small capacity. They are suitable for both domestic and industrial applications to convey clean water and non-aggressive chemical liquid, also can be applied to supply the water for garden, hotel, villas and agricultural irrigation, etc.

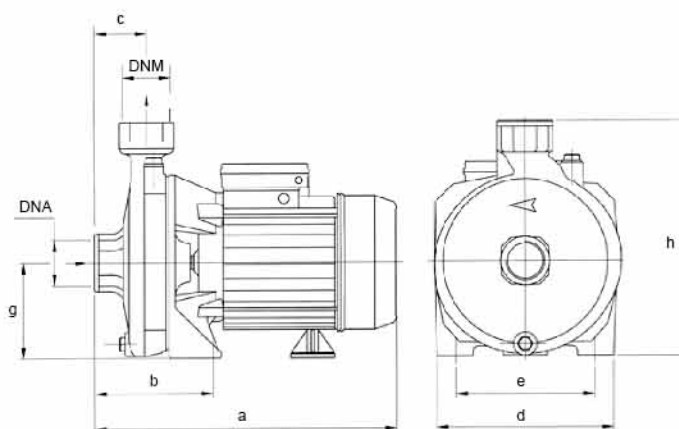
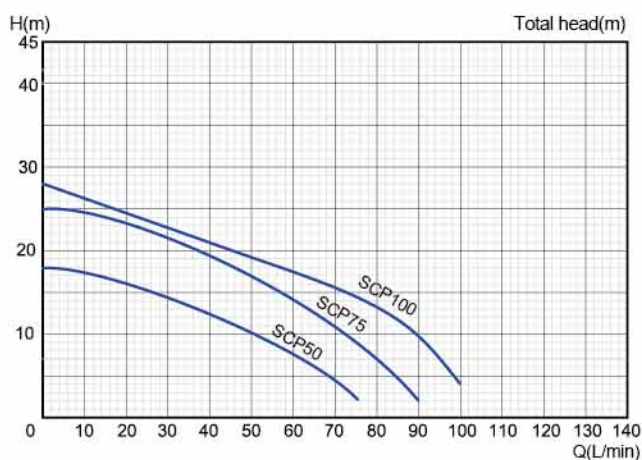
**Pumps should be installed in a covered area, protected against the weather.**

### Construction features

Pump Body: cast iron  
Motor Housing: aluminum  
Shaft: 45# steel/stainless steel  
Impeller: brass /S/S optional  
Motor: closed, externally ventilated  
Insulation Class: B/F  
Protection Class: IP44/IP54  
Duty: continuously rated  
Mechanical Seal: ceramic steatite/ metalized carbon

### Operating limitations

Max ambient temperature up to 40°C  
Max fluid temperature up to 80°C  
Max pressure up to 10 bar



### SCP

Model	HP	KW	DNA/DNM	Suct.Max m	Q.Max L/min	H.Max m	Q. L/min	0	10	30	50	75	90	100	Weight Kg
SCP50	0.5	0.37	1" / 1"	9	75	18	H(m)	18	16	12	8	2			9
SCP75	0.75	0.55	1" / 1"	9	90	25		25	23	19	14	9	2		13
SCP100	1	0.75	1" / 1"	9	100	28		28	26	23	19	14	9.5	4	14

### Overall and mounting dimension

Model	Dimensions (mm)										Package Dimension		
	DNA	DNM	a	b	c	d	e	g	h		A	B	H
SCP50	1"	1"	263	82	45	175	136	88	220		295	195	240
SCP75	1"	1"	294	82	47	175	142	90	224		330	210	265
SCP100	1"	1"	310	82	43	192	161	95	248		325	215	260

