

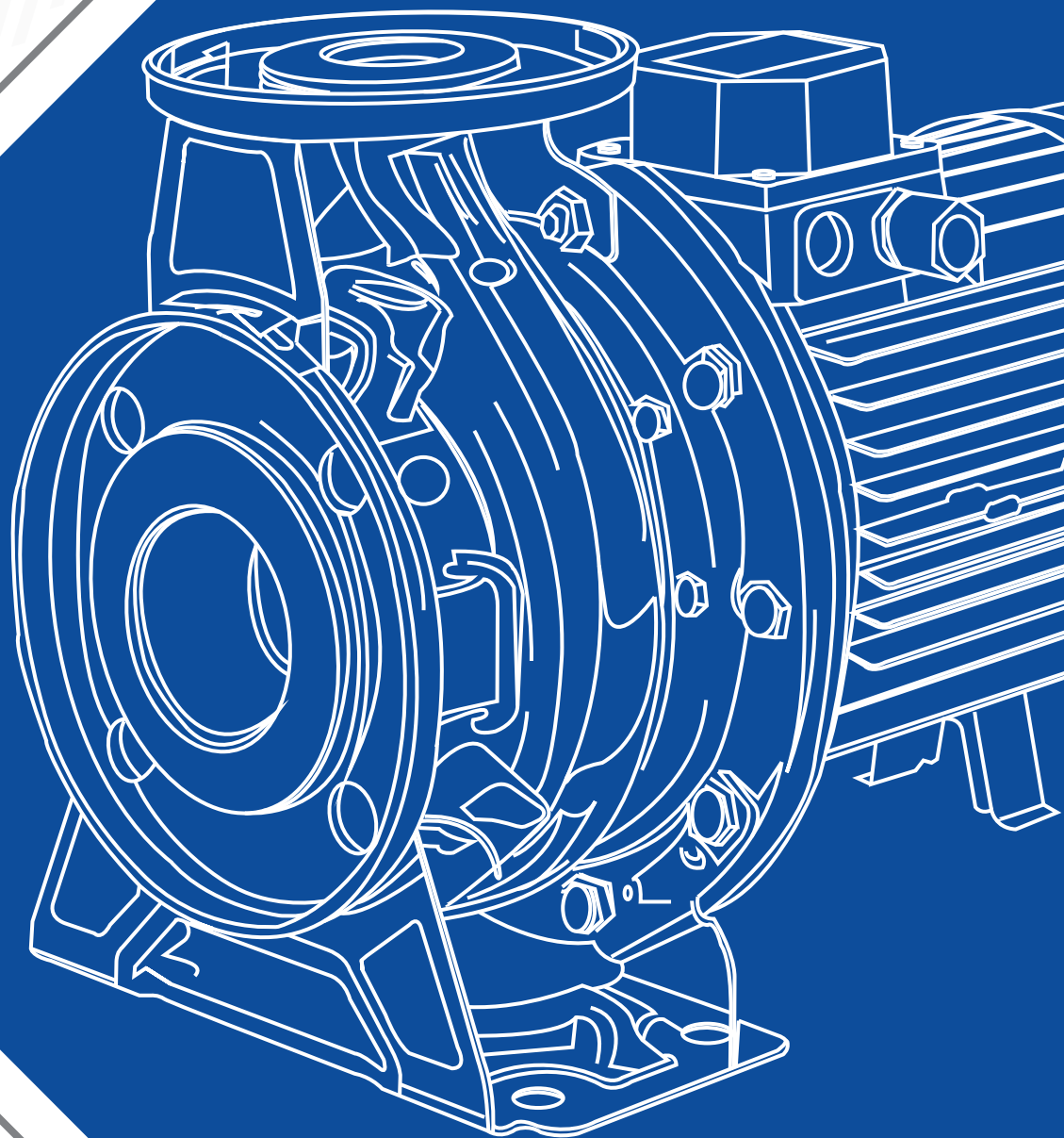
FAMCO

هایپر صنعت

- www.famco.co.ir
- www.famcocorp.com

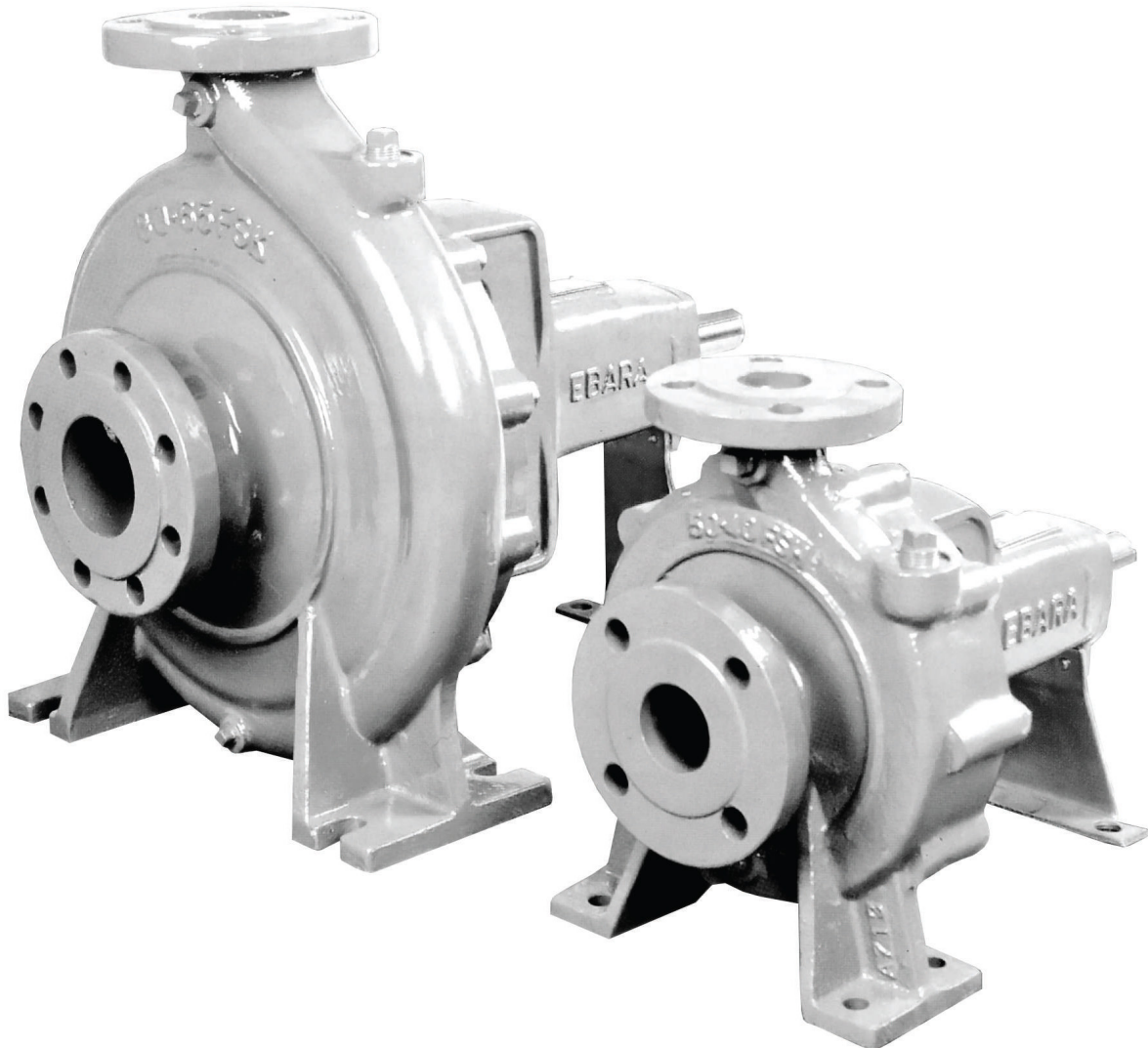


PUMPS
پمپ



Catalog 2018 • • Symbol of the dynamism in industry

FSA Series END SUCTION CENTRIFUGAL PUMPS



الکتروپمپ سانتریفوژ چدنی سری (FSA)

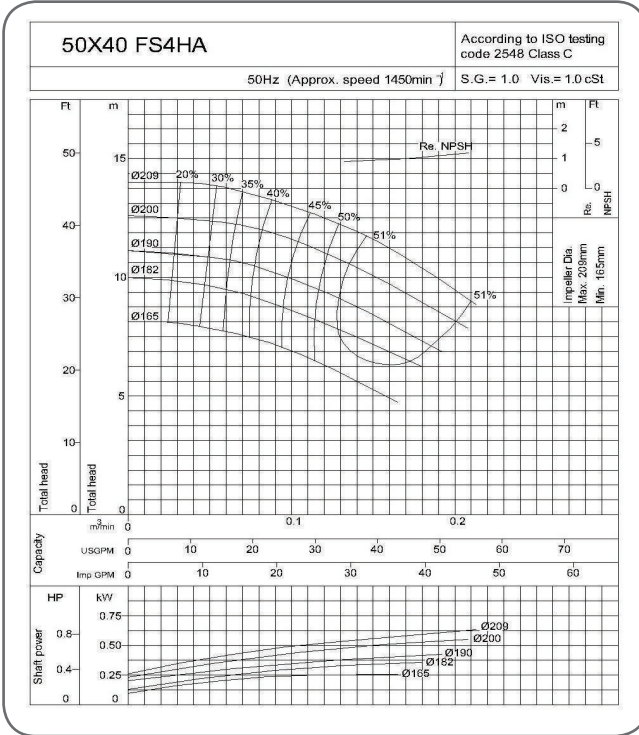
موارد مصرف: مناسب جهت تامین آب شهریو مصارف صنعتی، آبیاری، گرمایش و تهویه مطبوع، پمپاژ آب داغ و سرد، آتش نشانی

پمپ		
(4Pole)1500	(2Pole)3000	دور موتور (rpm)
آب تمیز	نوع مایع	مشخصات سیال
0-100	دما (C°)	
10		حداکثر فشار کاری (Bar)
پکیج سیل مکانیکی	نوع آب بندی	ساختار
بلبرینگ دور و بسته	یاتاقان	
چدن	پوسته	جنس
برنز	پروانه	
استنلس استیل 403	شفت	
JIS 10k RF	مکش	فلنج
JIS 10k RF	رانش	

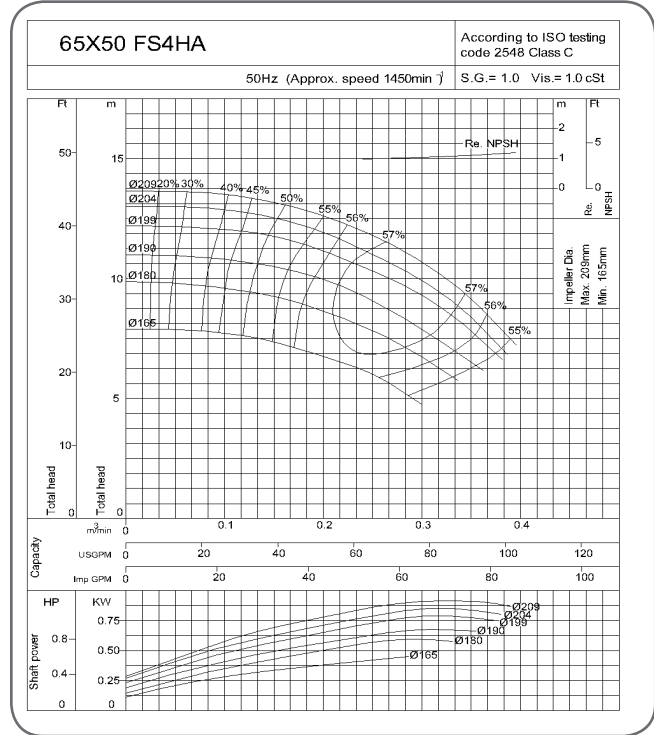
PERFORMANCE CURVES

4 POLE-1450RPM

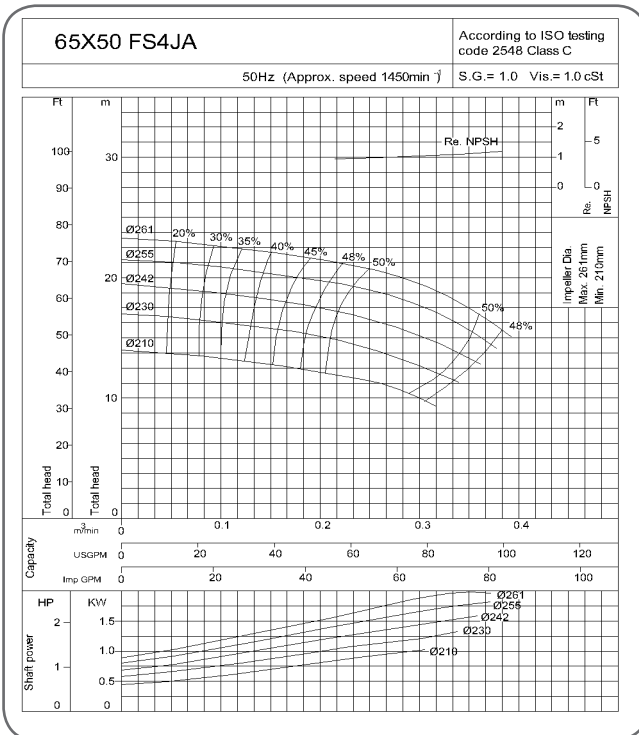
4POLE 1/27



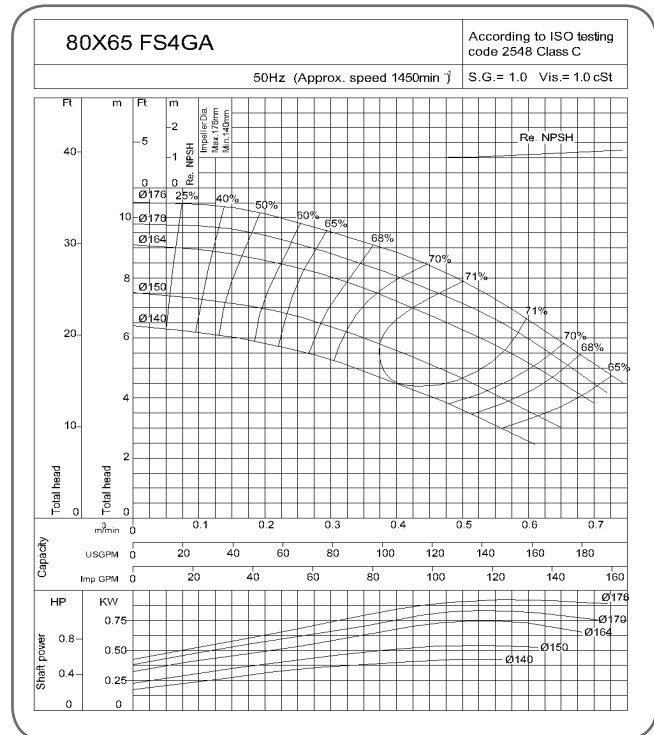
4POLE 2/27



4POLE 3/27



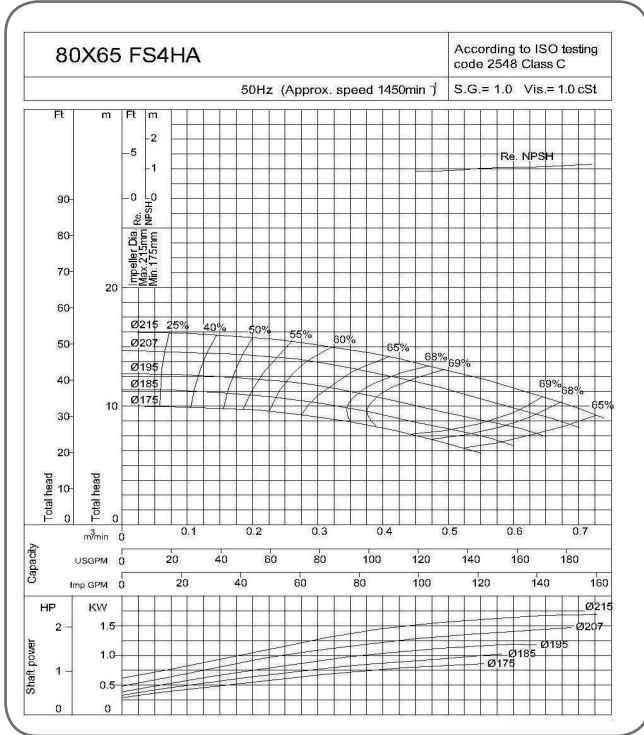
4POLE 4/27



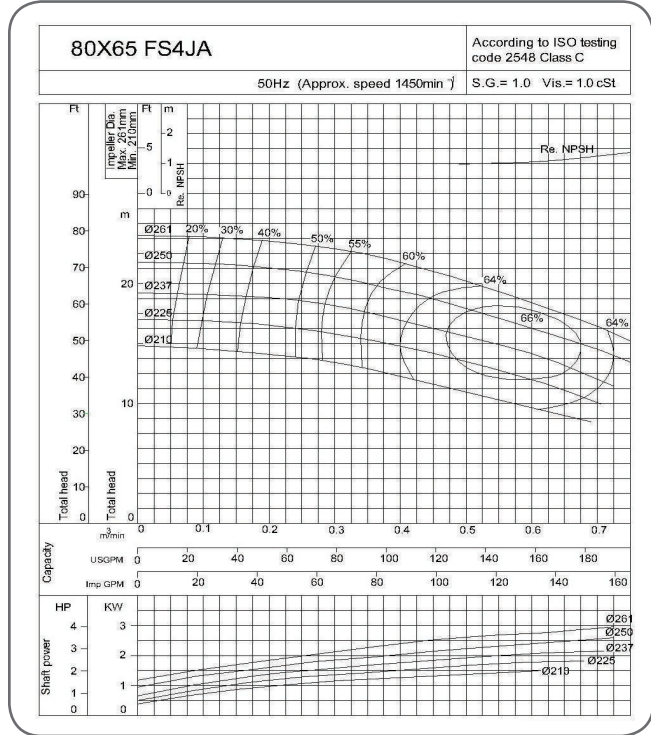
PERFORMANCE CURVES

4 POLE-1450RPM

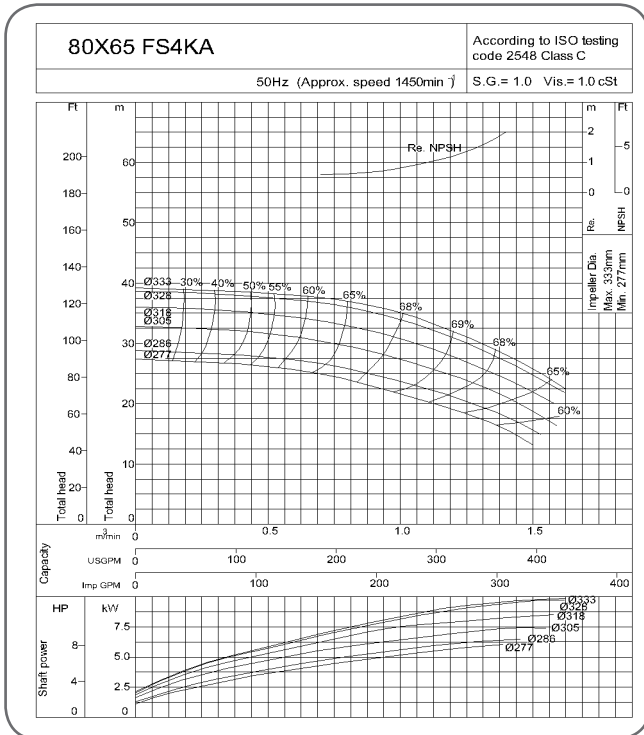
4POLE 5/27



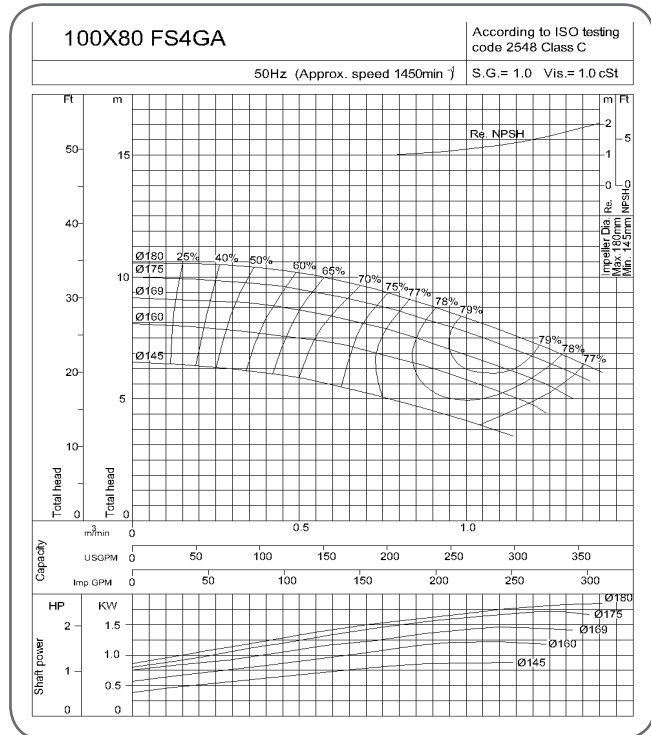
4POLE 6/27



4POLE 7/27



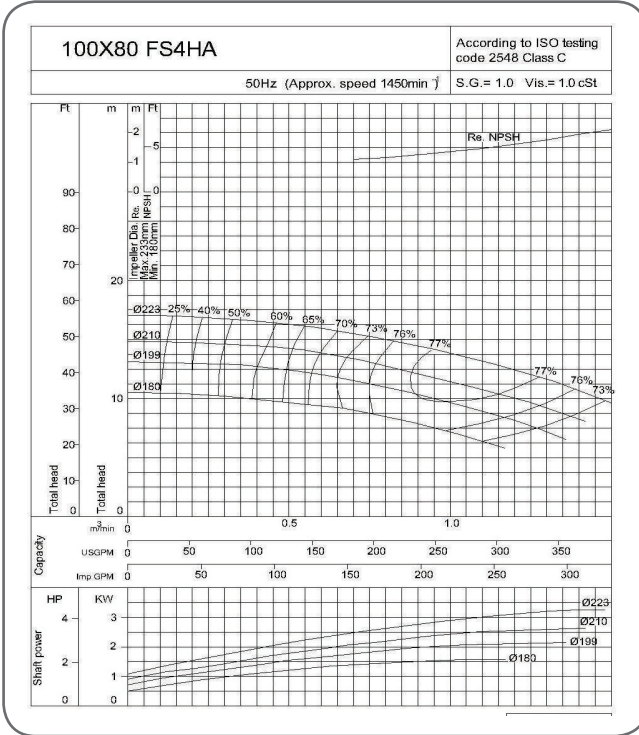
4POLE 8/27



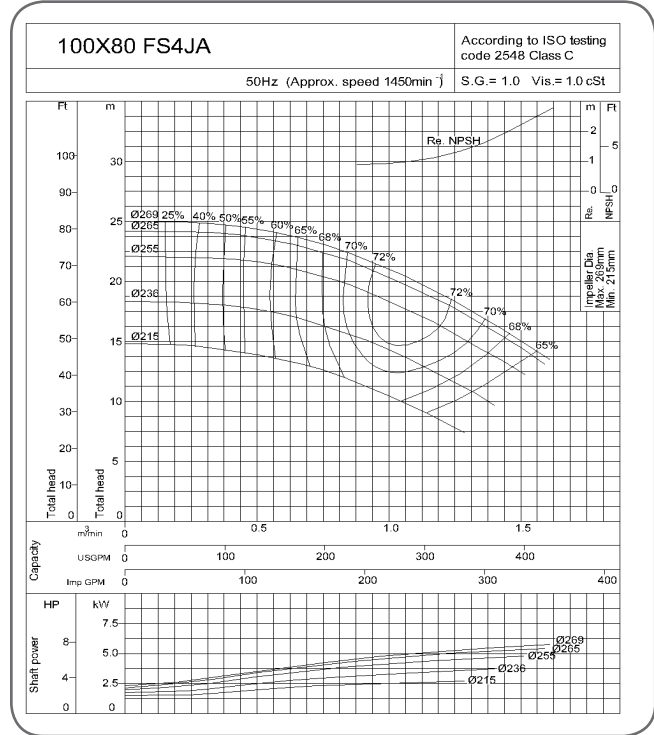
PERFORMANCE CURVES

4 POLE-1450RPM

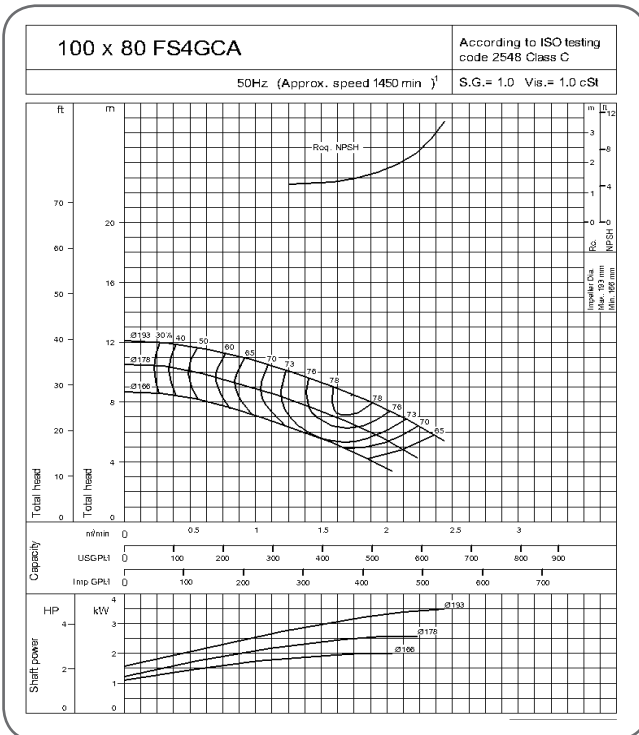
4POLE 9/27



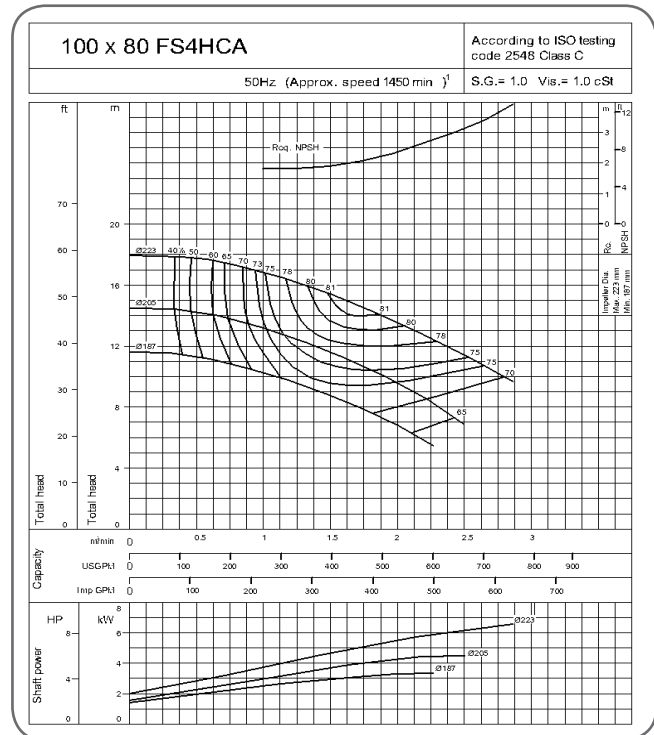
4POLE 10/27



4POLE 11/27



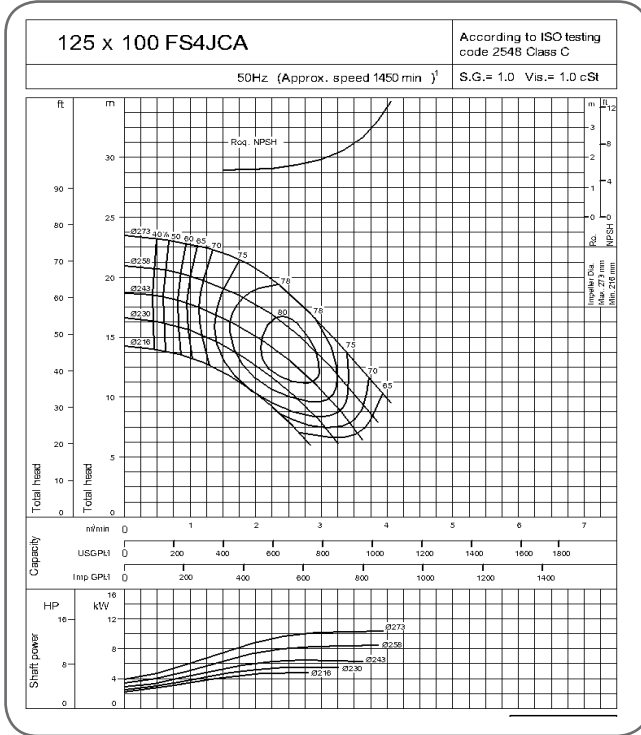
4POLE 12/27



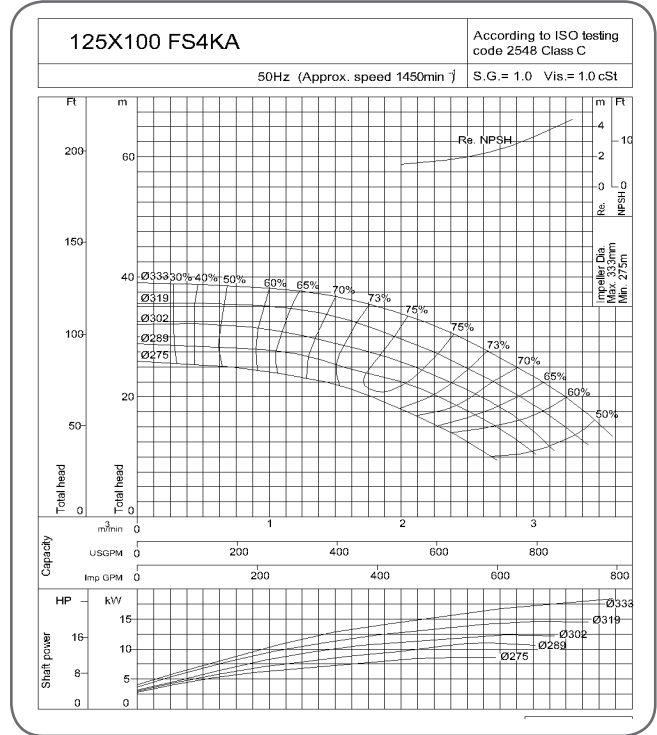
PERFORMANCE CURVES

4 POLE-1450RPM

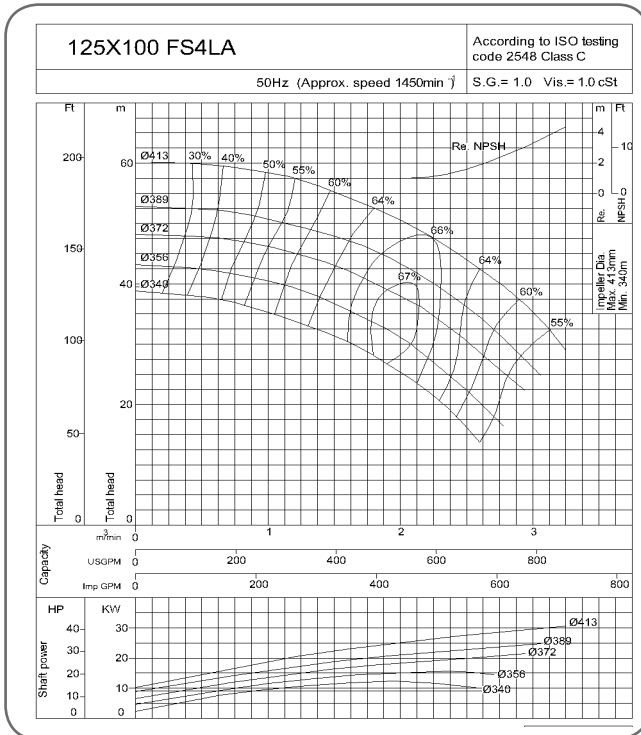
4POLE 13/27



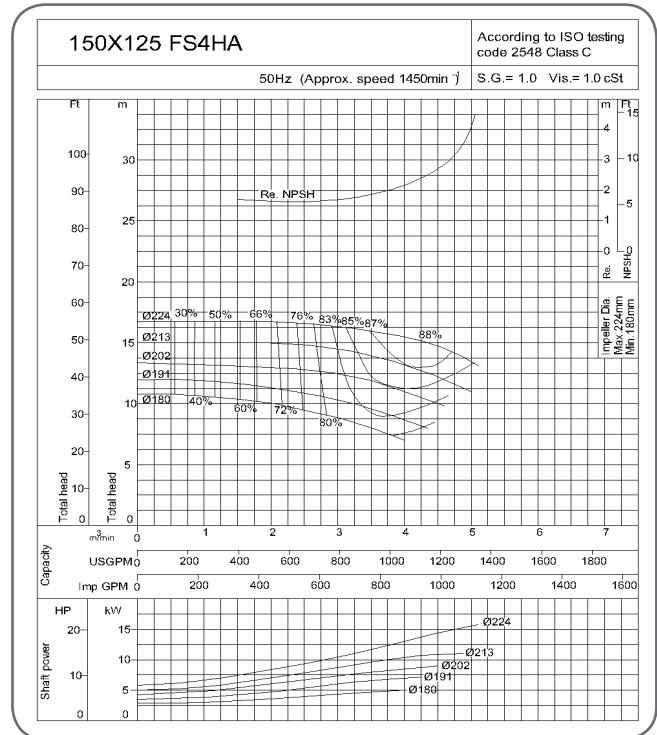
4POLE 14/27



4POLE 15/27



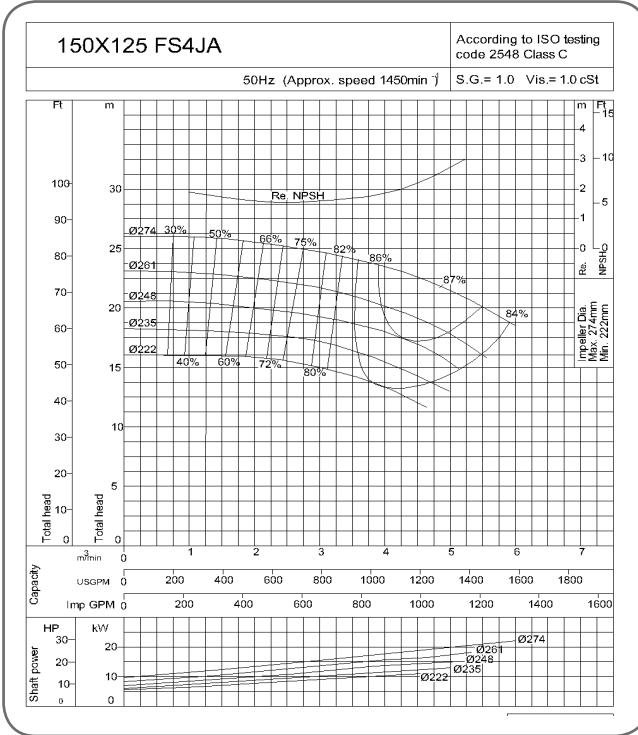
4POLE 16/27



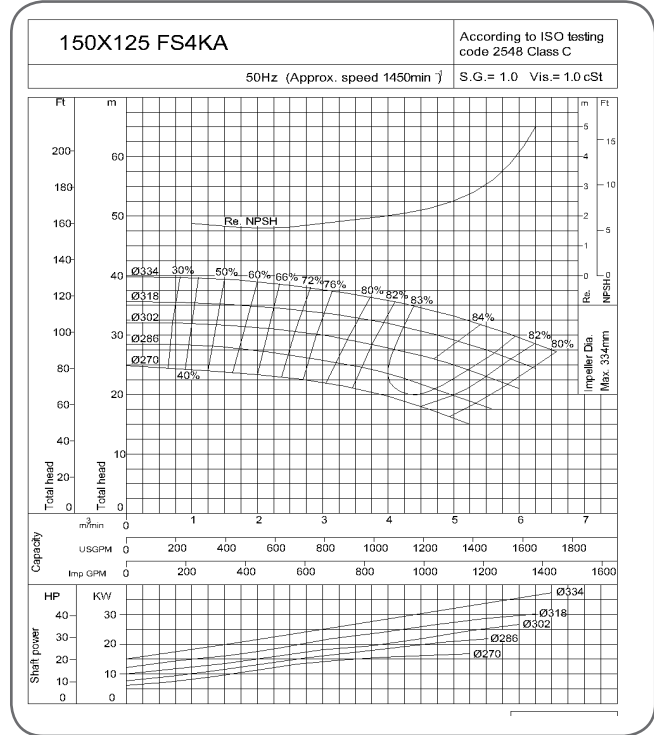
PERFORMANCE CURVES

4 POLE-1450RPM

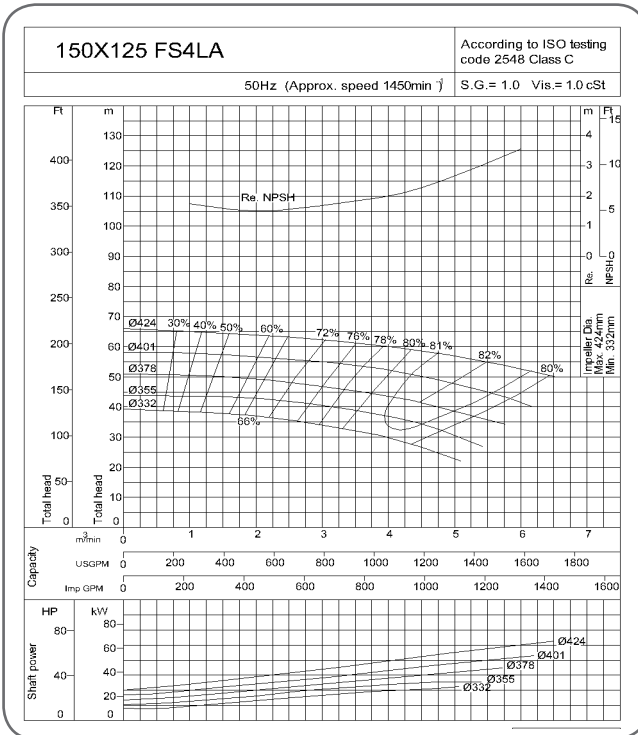
4POLE 17/27



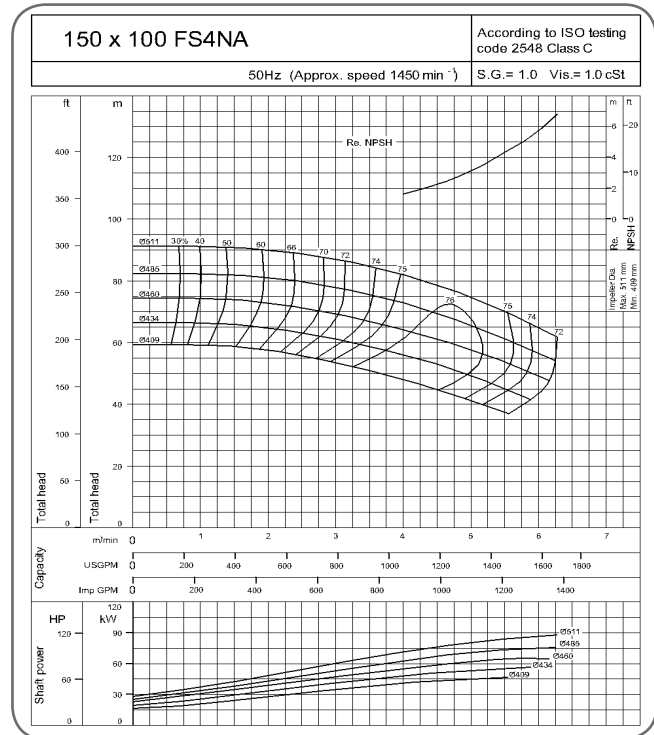
4POLE 18/27



4POLE 19/27



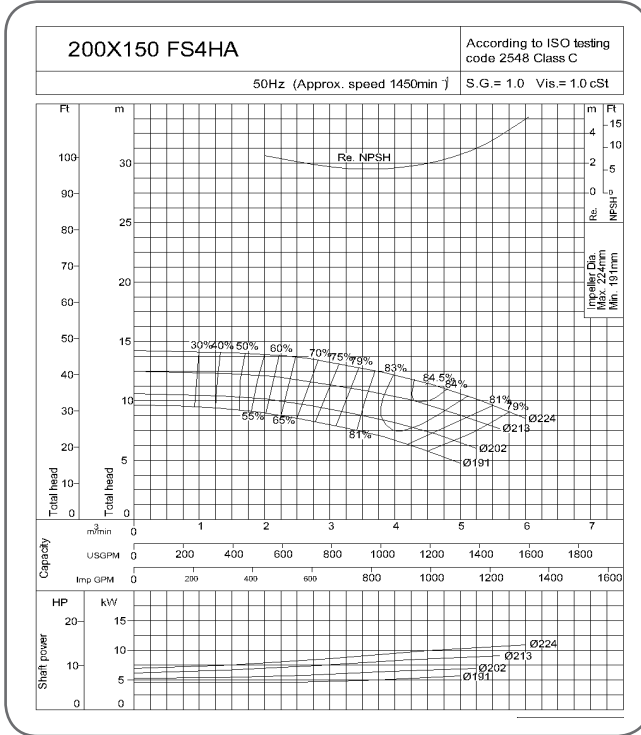
4POLE 20/27



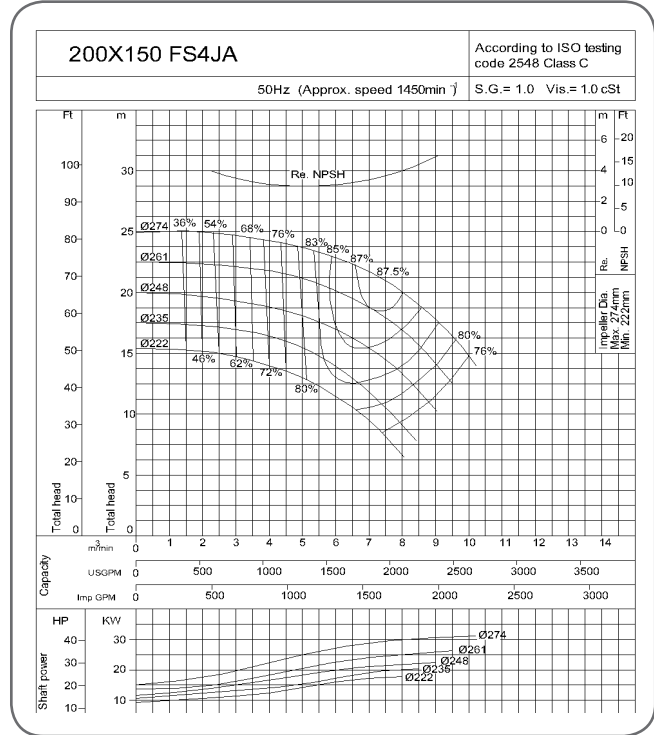
PERFORMANCE CURVES

4 POLE-1450RPM

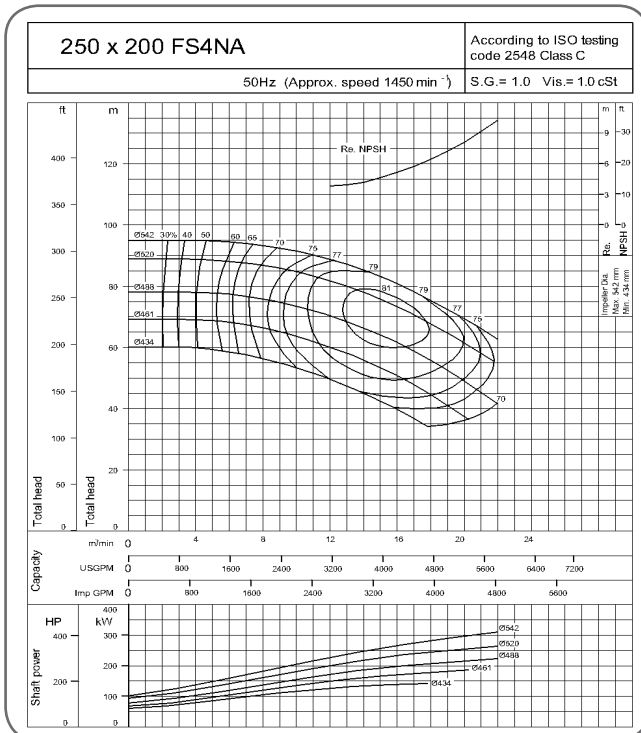
4POLE 21/27



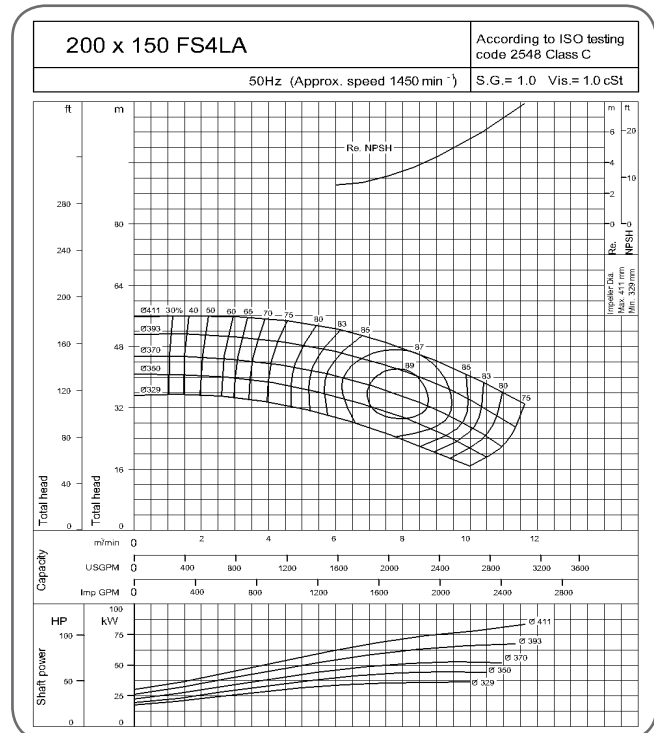
4POLE 22/27



4POLE 23/27



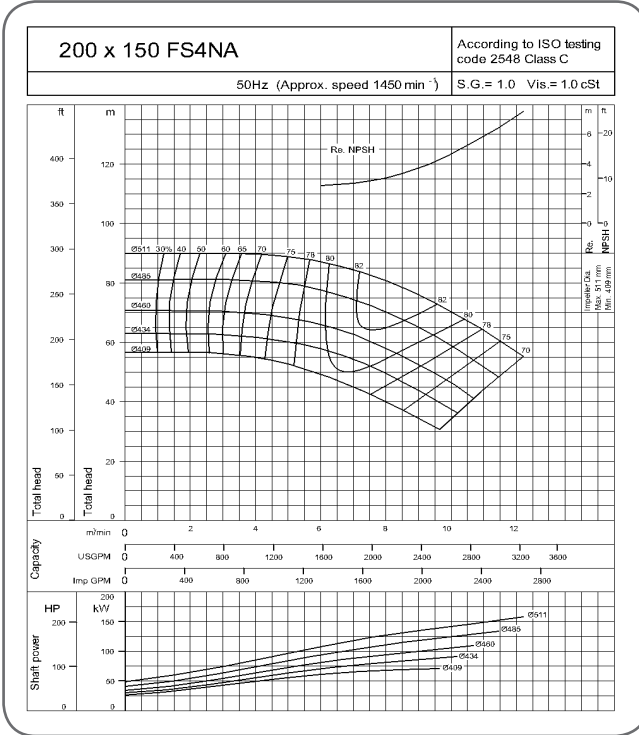
4POLE 24/27



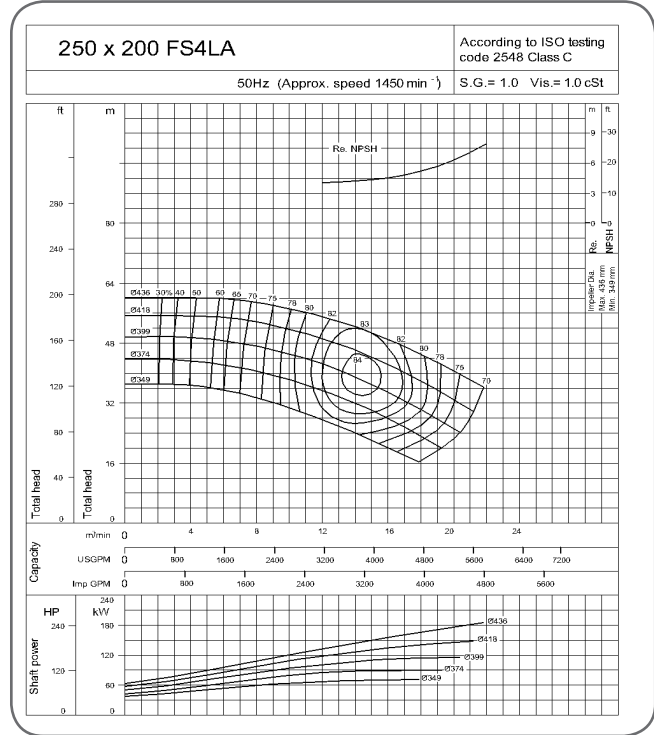
PERFORMANCE CURVES

4 POLE-1450RPM

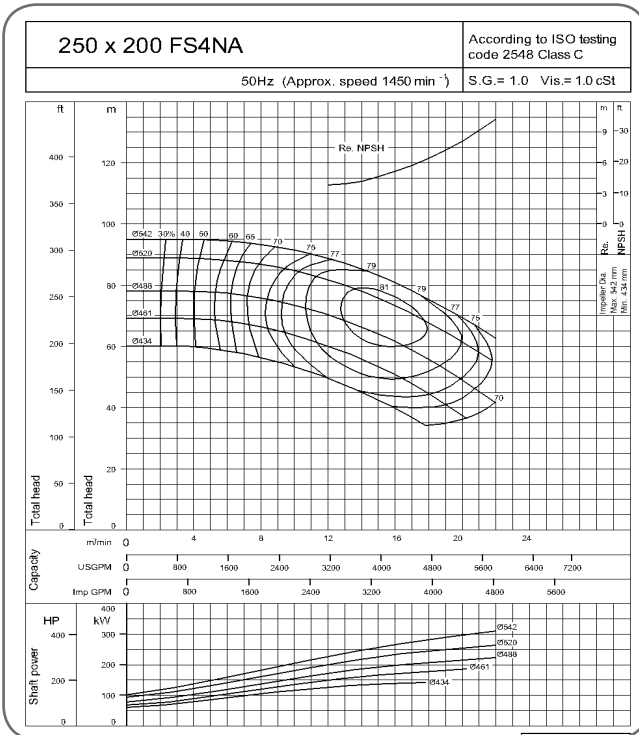
4POLE 25/27



4POLE 26/27



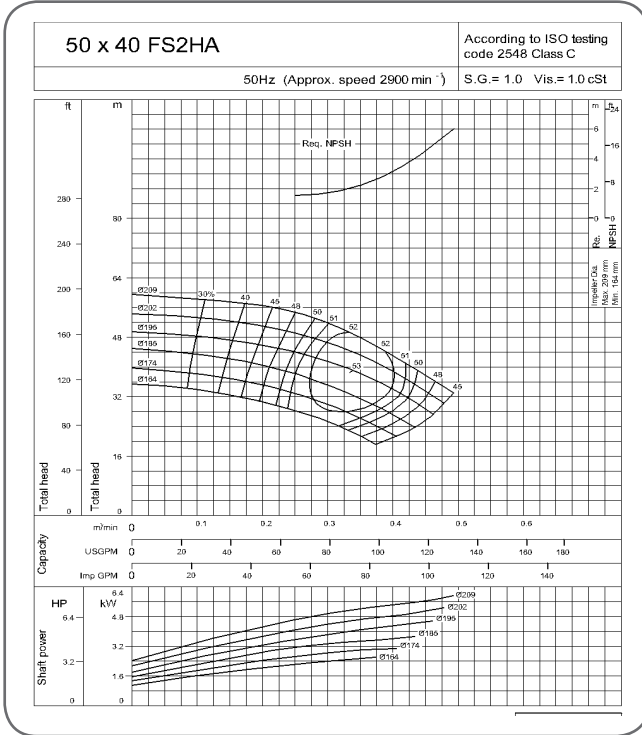
4POLE 27/27



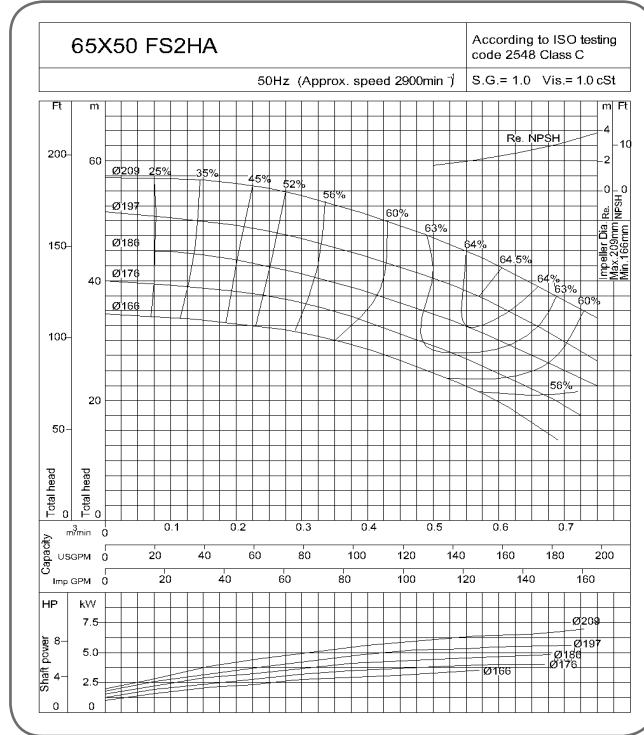
PERFORMANCE CURVES

2 POLE-2900RPM

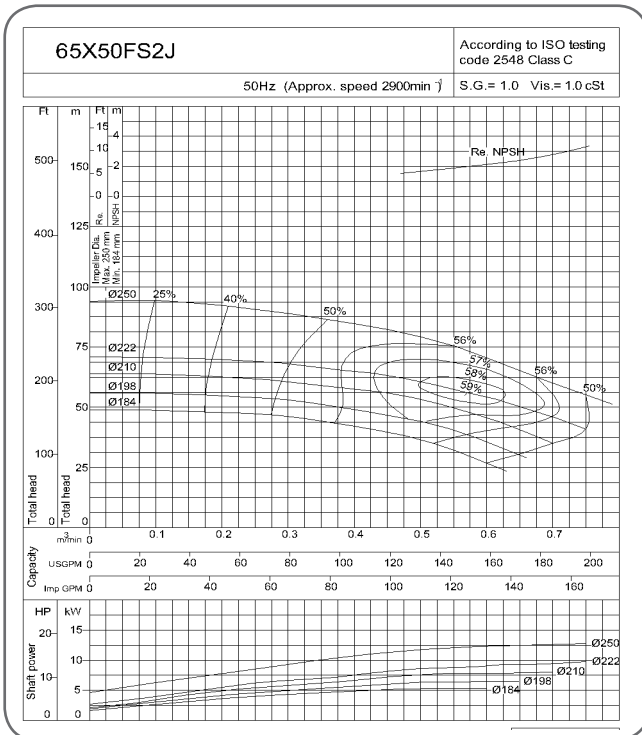
2POLE 1/14



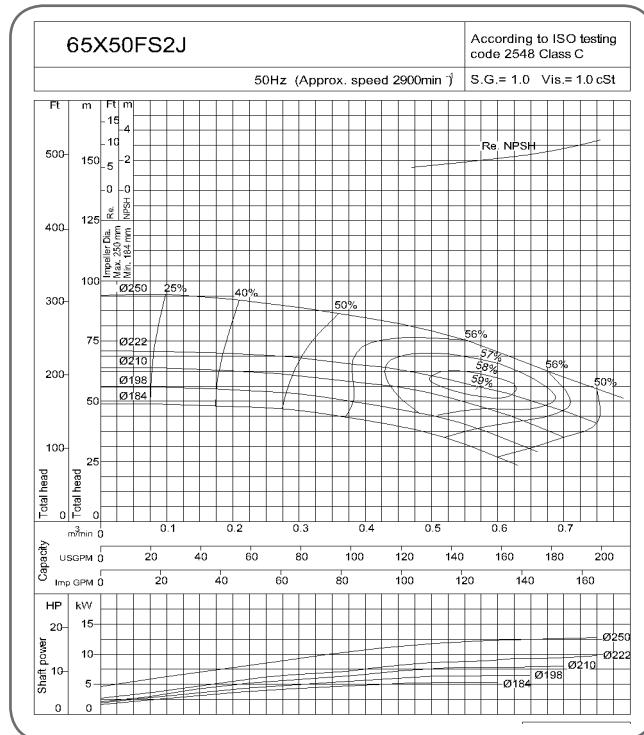
2POLE 2/14



2POLE 3/14



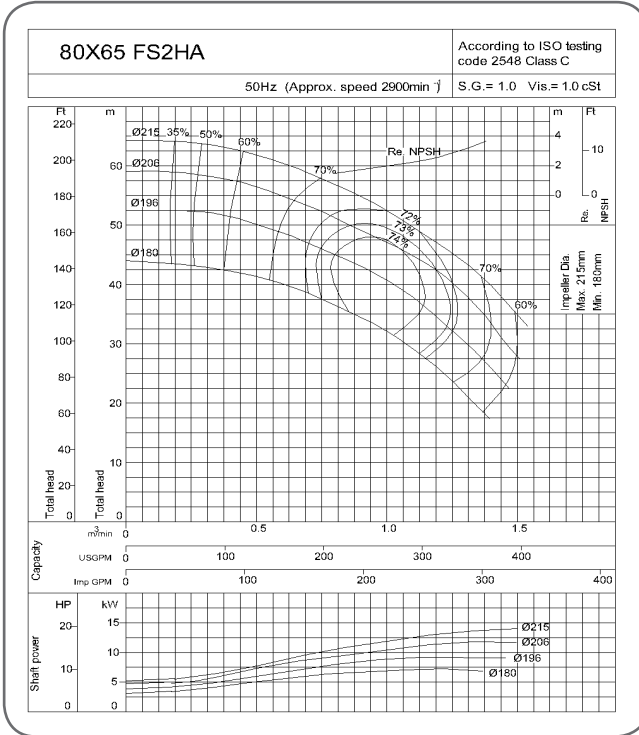
2POLE 3/14



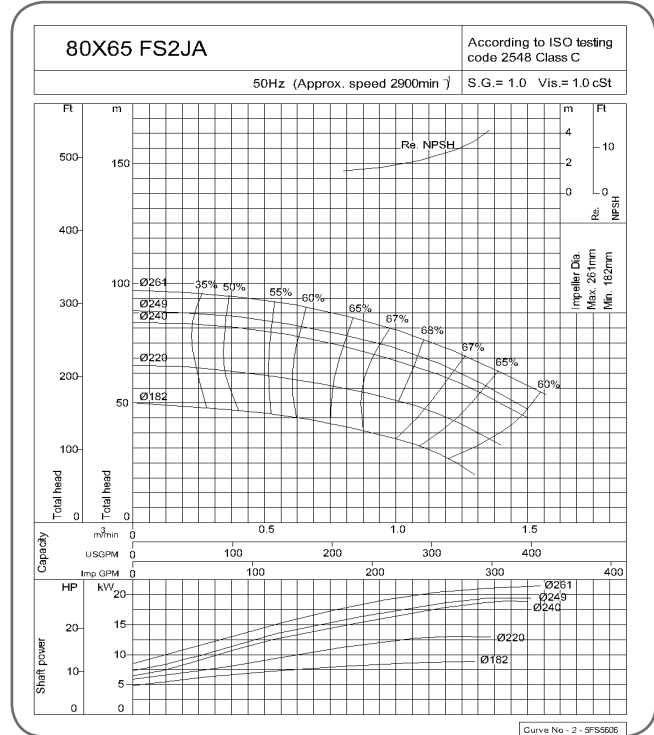
PERFORMANCE CURVES

2 POLE-2900RPM

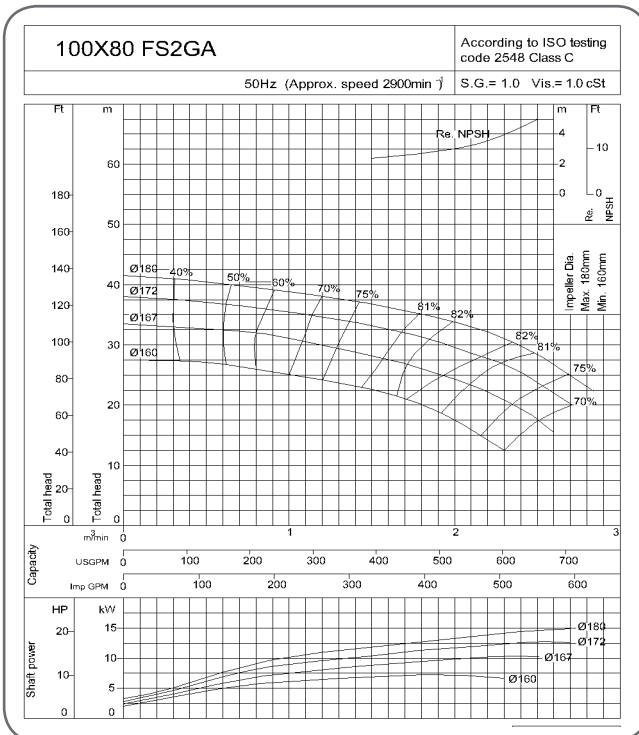
2POLE 5/14



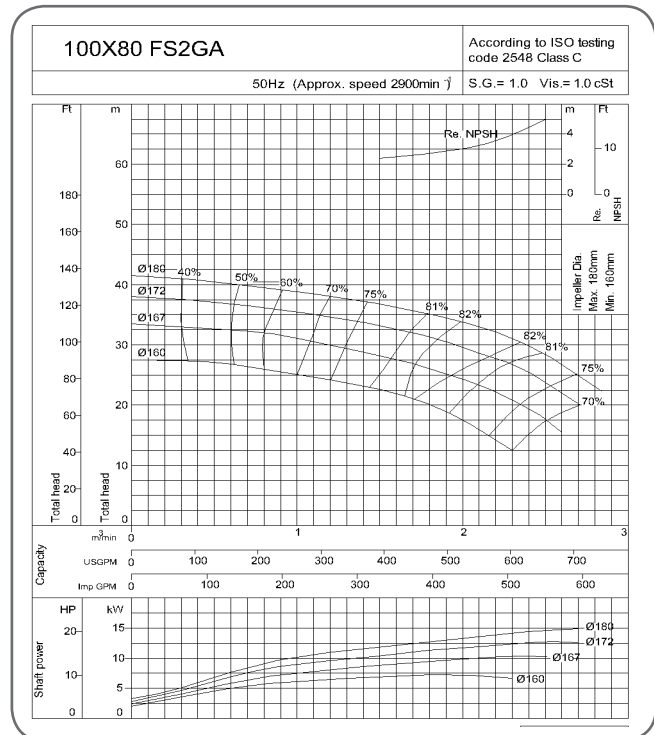
2POLE 6/14



2POLE 7/14



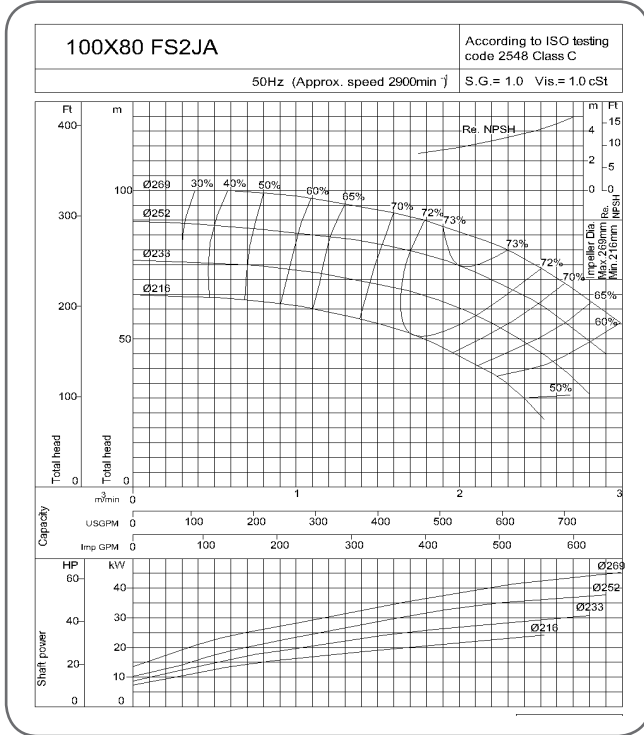
2POLE 8/14



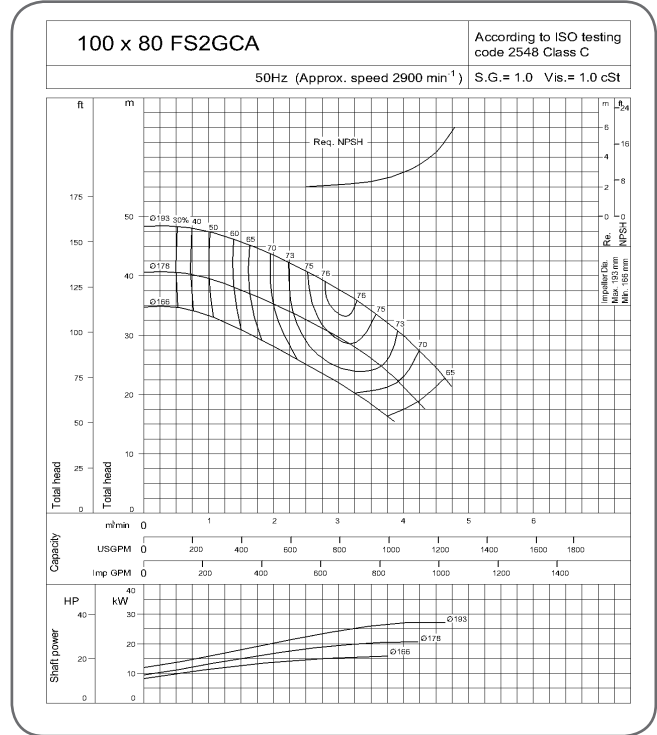
PERFORMANCE CURVES

2 POLE-2900RPM

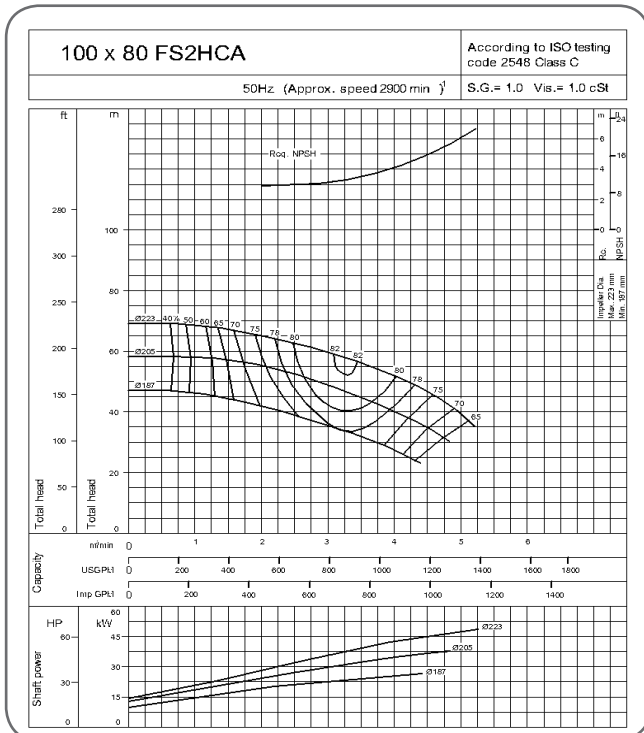
2POLE 9/14



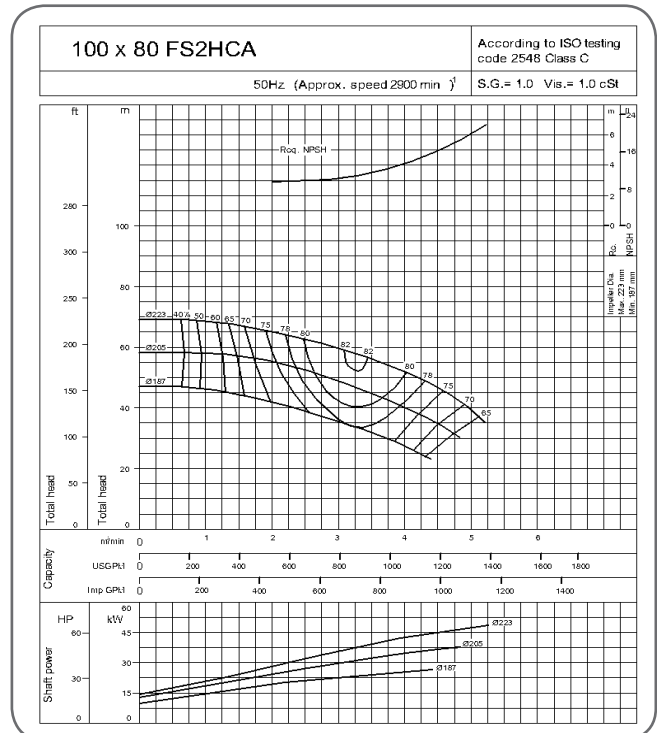
2POLE 10/14



2POLE 11/14



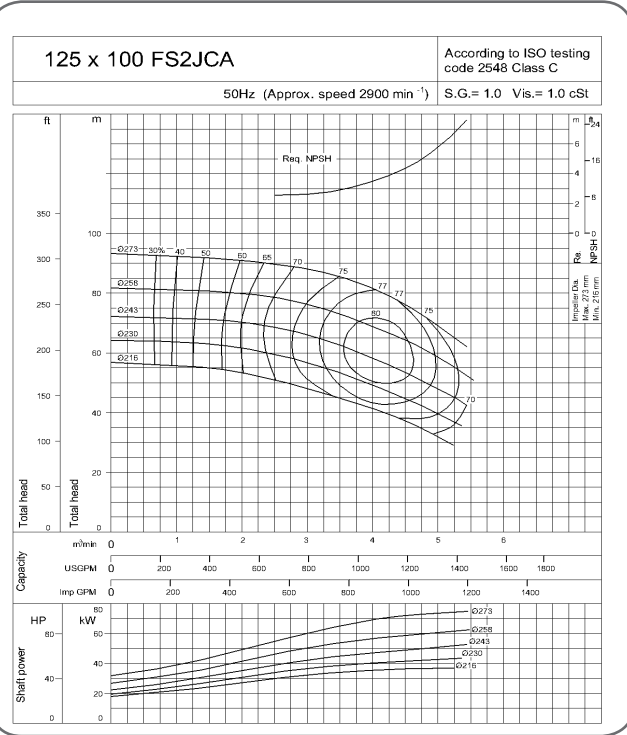
2POLE 12/14



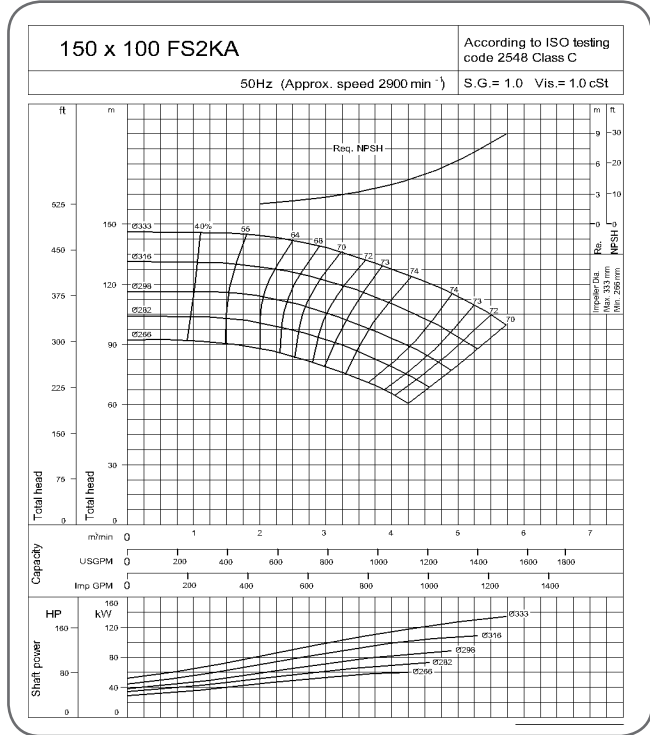
PERFORMANCE CURVES

2 POLE-2900RPM

2POLE 13/14

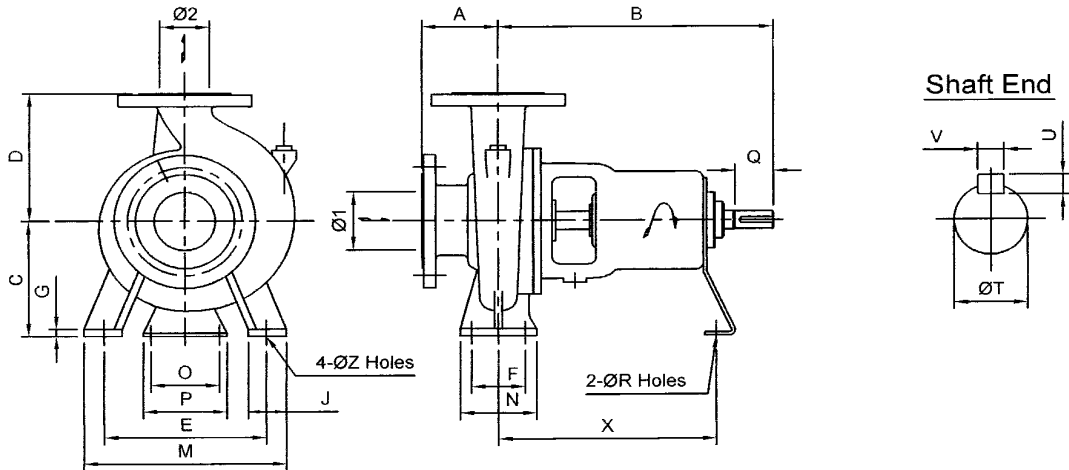


2POLE 14/14

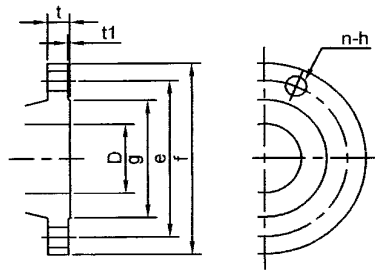


FSA Series END SUCTION CENTRIFUGAL PUMPS

PUMP



FLANGE

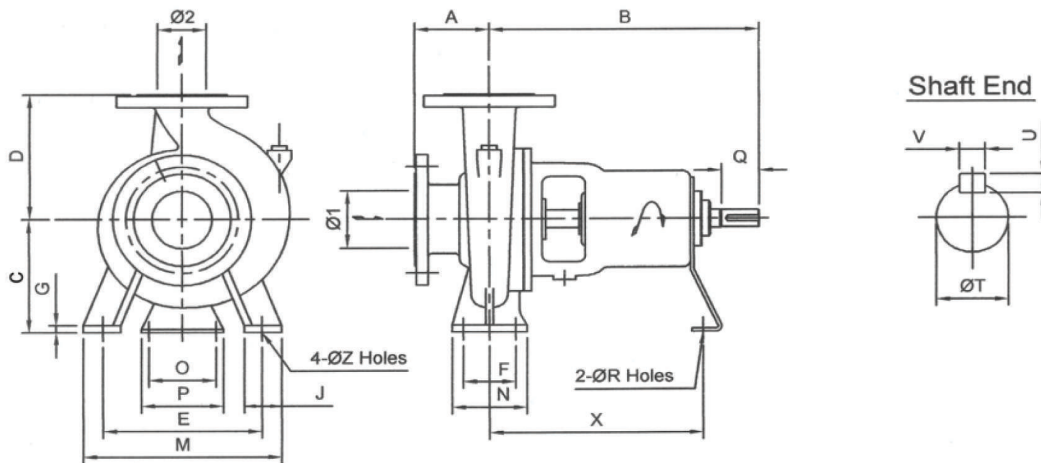


D	f	e	g	t1	t	n	h
mm	mm	mm	mm	mm	mm		mm
40	140	105	81	2	20	4	19
50	155	120	96	2	20	4	19
65	175	140	116	2	22	4	19
80	185	150	125	2	22	8	19
100	210	175	151	2	24	8	19
125	250	210	182	2	24	8	23
150	260	240	212	2	26	8	23
200	330	290	262	2	26	12	23

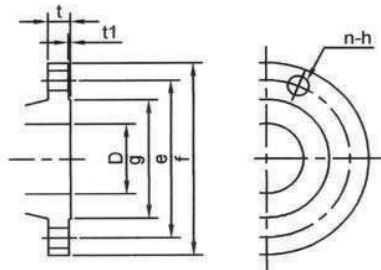
Model	Size		Pump														Shaft				wt													
	φ1	φ2	A	B	C	D	E	F	G	J	M	N	O	p	ft	X	Z	T	Q	U		V	kg											
50×40 FSHA	50	40	60	360	160	160	ISO	70	12	50	240	100	110	150	17	285	15	24	50	7	8	37												
65×50 FSHA	65	50	100	360	160	180	212	70	12	50	265	100	110	150	17	285	15	24	50	7	8	42												
65×50 FSJA					160	225	250	95	14	65	320	125										49												
80×65 FSGA	80	65	100	360	160	200	212	70	12	50	265	100	110	150	17	285	15	24	50	7	8	39												
60×65 FSHA					160																	200	212	95	65	320	125	48						
80×65 FSJA					180	225	250	120	400	160	370	19										60												
80×65 FSJA					125	470	225	280	315	120	95	14										65	320	125	110	150	17	285	15	24	50	7	8	108
100×80 FSGA	100	80	100	360	160	200	212	95	14	65	260	125	110	150	17	285	15	24	50	7	8	49												
100×30 FSHA					180	225	250				15											80	360	160	110	150	17	285	19	32	80	8	10	62
100×60 FSJA					200	250	280	120	15	80	360	160										110	150	17	285	19	32	80	8	10	70			
100×60 FSGCA					125	360	180	225	250	95	14	65										320	125	110	150	17	285	15	24	50	7	8	10	62
100×80 FSHCA								250	280																									95
125×100 FSJCA								360	235	280	315	120										16	80											400
125×100 FSJA	125	100	140	470	250	315	315	120	16	80	400	160	110	150	17	285	15	24	50	7	8	128												
125×100 FSLA				530	280	355	400	150	20	100	500	200										370	24	42	110	8	12	168						
150×125 FSHA	156	125	140	470	250	315	315	120	15	80	400	160	110	150	17	370	19	32	80	8	10	120												
150×125 FSJA					355																	400	150	16	100	500	200	110	150	17	370	24	32	80
200×150 FSHA	200	150	160	470	280	355	400	150	16	100	500	200	110	150	17	370	24	32	80	8	10	137												

FSA Series END SUCTION CENTRIFUGAL PUMPS

PUMP



FLANGE

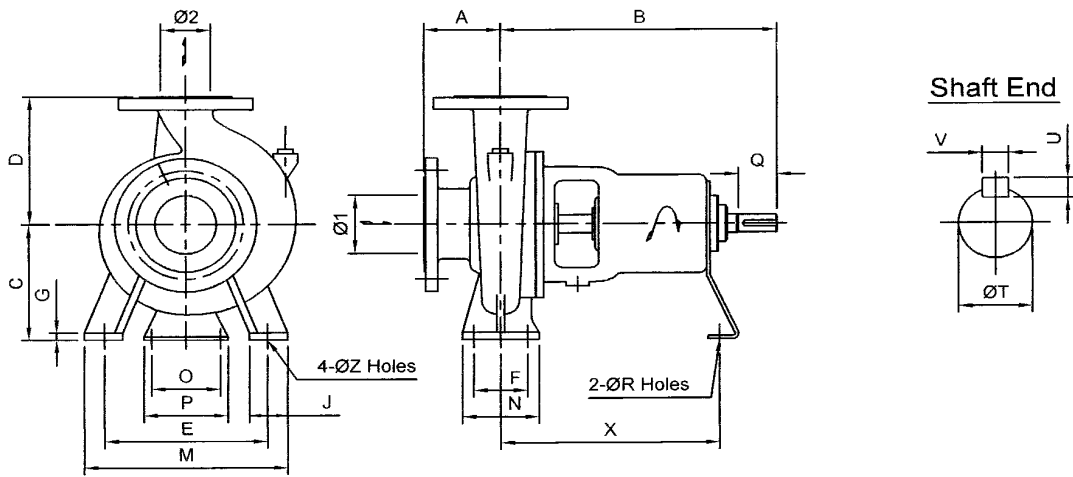


D	f	e	g	t1	t	n	h
mm	mm	mm	mm	mm	mm		mm
125	250	210	182	2	24	8	23
150	280	240	212	2	26	6	23
200	330	290	262	2	26	12	23

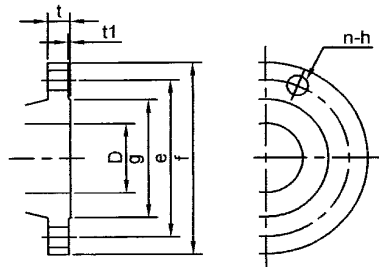
Model	Size		Pump																	wt (kg)		
	φ1	φ2	A	&	C	D	E	F	G	J	M	N	O	p	R	X	Z	T	Q		U	V
150x125 FSKA	150	125	140	530	280	355	400	150	16	100	500	200	110	150	17	370	24	42	110	8	12	170
150x125 FSL A					315	400			20													205
200x150 FSJA	200	150	160	530	280	375	400	150	18	100	500	200	110	150	17	370	24	42	110	8	12	163
200x150 FSKA				670	315	400	450		20		550		140	180	19	500		48		9	14	222

FSA Series END SUCTION CENTRIFUGAL PUMPS

PUMP



FLANGE



D mm	f mm	e mm	g mm	t1 mm	t mm	n	h mm
65	175	140	116	2	22	8	19
100	225	165	160	2	26	6	23
150	305	260	230	2	25	12	25
200	350	305	275	2	30	12	25
250	430	380	345	2	34	12	27

Model	Size		Pump																		wt	
	φ1	φ2	A	a	C	O	E	F	G	J	M	N	O	P	R	X	Z	T	Q	u	V	kg
100×65 FSKA	100	65	125	360	225	260	315	120	16	so	400	160	110	150	17	257	19	36	80	8	10	106
150×100 FSKA	150	100	140	530	250	315	315	120	16	50	400	160	90	120	15	373	19	42	95	8	12	146
150×100 F5NA			180	670	375	450	450	150	20	100	550	200	140	160	19	500	24	48	110	9	14	365
200×150 F5LA	200	150	162	670	315	450	450	150	20	100	550	200	140	180	19	500	24	46	110	9	14	336
200×150 FSNA			162		375	560												60		11	16	488
250×200 FSLA	250	200	140	670	365	560	560	250	25	100	660	315	140	160	19	500	24	60	110	11	18	505
250×200 FSNA			200	930	435	630							60	12				20		642		

FAMCO

هایپر صنعت

Symbol of the dynamism
in industry

Tel: ۳۳۱۱۳۳۷۷ (خط ۳۰)
E-mail: info@famco.co.ir
www.famcocorp.com
www.famco.co.ir

تهران - کیلومتر ۲۱ جاده مخصوص کرج - روبروی پالایشگاه
نفت پارس، پلاک ۱۲
تهران - خیابان سعدی جنوبی - مجتمع اداری تجاری سعدی
طبقه ششم - واحد ۶۱۷

نماد پویایی در صنعت