



KIPOR

INNOVATION LEADS TO THE FUTURE OF POWER



HIGHER EFFICIENCY LOWER EMISSIONS

Great changes have taken place since the establishment of KIPOR.

We live in a global economy that is defined by its volatility, but at the same time, we have seen amazing changes that will forever affect our future to make it better.

Technologies are becoming cleaner and cleaner.
Reserves of cleaner fuels need to be increased.

Access to better goods and services in developing markets are

To many in the past, these advances were unimaginable, especially given such a tumultuous economy.

Today, we see these changes that can lead to growing economies, a sustainable environment and a better life for people and our society. The challenges here and there will inspire us to think more, to marshal resources and to work harder to help solve the world's toughest problems. Doing the right thing the right way, is how we define how to combine innovation and ecology.

We KIPOR deeply take our mission into consideration, to provide highly efficient and innovative products and a series of solutions for the customers. It is our genuine wish to produce "Low Carbon" products.

We are always dedicated to develop new technologies to make the world better. Through years of continuous effort, innovative technologies are developed and applied to increase efficiency and make our products more environment friendly.

Now we are together facing the global crises that the non-renewable resources are limited. Facing this challenge, it is extremely important to find alternative fuels.

We KIPOR have started to take actions. We have been on the road to produce gas generators by using the alternative fuels. All our efforts reflect our belief in a better way, our relentless drive to invent and our commitment to helping the world work better.

As we work in 2014 and beyond, we're excited about delivering more efficient energy solutions, making it easier and more efficient to move our products and resources to where they are needed, and contributing to stronger and more resilient economies.

Thank you

Henglin Xiao
Chairman and CEO



The Company	02
Global Reach	03
Kipor Factory	04
Research & Development	05
Social Responsibility	06
Environmental Responsibility	07
Projects	08
Projects	09
IG Generators	10 - 13
ID Generators	14 - 15
KDE Generators	16 - 18
Gas Generators	19
KDE Ultra Silent Generators	20 - 21
Pro-X Generators	22 - 27
Containerised Generators	28 - 29

ALL-IN-ONE SYSTEMATIC MANUFACTURER

Service and Support



OUR BUSINESS IS POWER

Whether it's power for your business, a backup generator powering the family home through power cuts, portable generators powering tools at the job site or giving you power for leisure use, Kipor meets the power needs of consumers and businesses alike - Across the country and around the World.

Kipor manufactures the widest range of power products in the marketplace including portable, residential, commercial and industrial generators.

At Kipor we protect the things that power your life by providing quality and affordable power solutions.

Ask Richard



Service & Support

We understand the needs of customers and we are always here to help, Our commitment to ensuring that we provide our customers with informative information from what type of generator is suitable to meet there needs to all the technical questions that you may have.



At Kipor our service and support department is run by our engineers who have the knowledge base to answer any question however complex.

You can contact us on **0121 296 2041**
or email us at support@kiporuk.co.uk

Dealer Network Directory



Kipor Dealer Network

Backed by a extensive dealer network across the UK, Kipor has many dealer locations across the country to get you the equipment, service and support you need to get your job done!

Kipor is committed to customers and distribution partners who expect world-class products, service and support everyday. Kipor is committed to continually strengthen our coverage to grow this world-class service and support.

Find your local dealer by using our Dealer Network Directory at www.kiporuk.co.uk

Validate Your Warranty



Kipor Online

Our website has been developed to provide comprehensive information and support for our customers.

Customers have the ability to purchase products, register their warranty plus many other features.



UK and IRELAND NETWORK



- ▲ 7.3 million square feet of manufacturing space.
- ▲ Selling in over 150 countries.
- ▲ Over 3000 Employees.
- ▲ Over 500 Engineers.



KIPOR has invested tremendously in R&D throughout the years and arrives at the forefront of technology innovations.

Today, KIPOR has a strong R&D team, a high-energy management team, and a state-of-the-art production facility.

KIPOR produces over 400 different models in five major product groups. Most have achieved internationally recognized safety and environmental certifications including CE, EPA, UL, CSA, CARB and CETL.

KIPOR's success is due to the fact that we are always looking for the next great technological innovation.

We continuously search for new materials, techniques and systems that will help us to build better products and offer our customers even higher levels of service and performance.

KIPOR has reached a new level as an international company since its early days as a family business. Our comprehensive strength has never been more evident than today as shown by the development of KIPOR's large scale engines and generators.

No matter where or when, we never forget the heavy burden of social responsibility we carry owing to the care and assistance that society has bestowed upon us. KIPOR will create a great future hand in hand with you- our customers, partners and friends.

It is our mission to provide high efficient and innovative products and a series of solutions for the customers, meeting the needs of "low carbon" products.

Generators



SUSTAINABILITY

For the past few years, we have made progress on improving efficiency, reducing emissions, saving energies and protecting the local environment, due to

KIPOR's several advanced technologies.

We are inspired by these progresses and we know we still have a long way to go.

It is universally known that it is a preserving course to realize sustainable development and we are dedicated to be a pioneer to lead this course.

A GREEN FUTURE

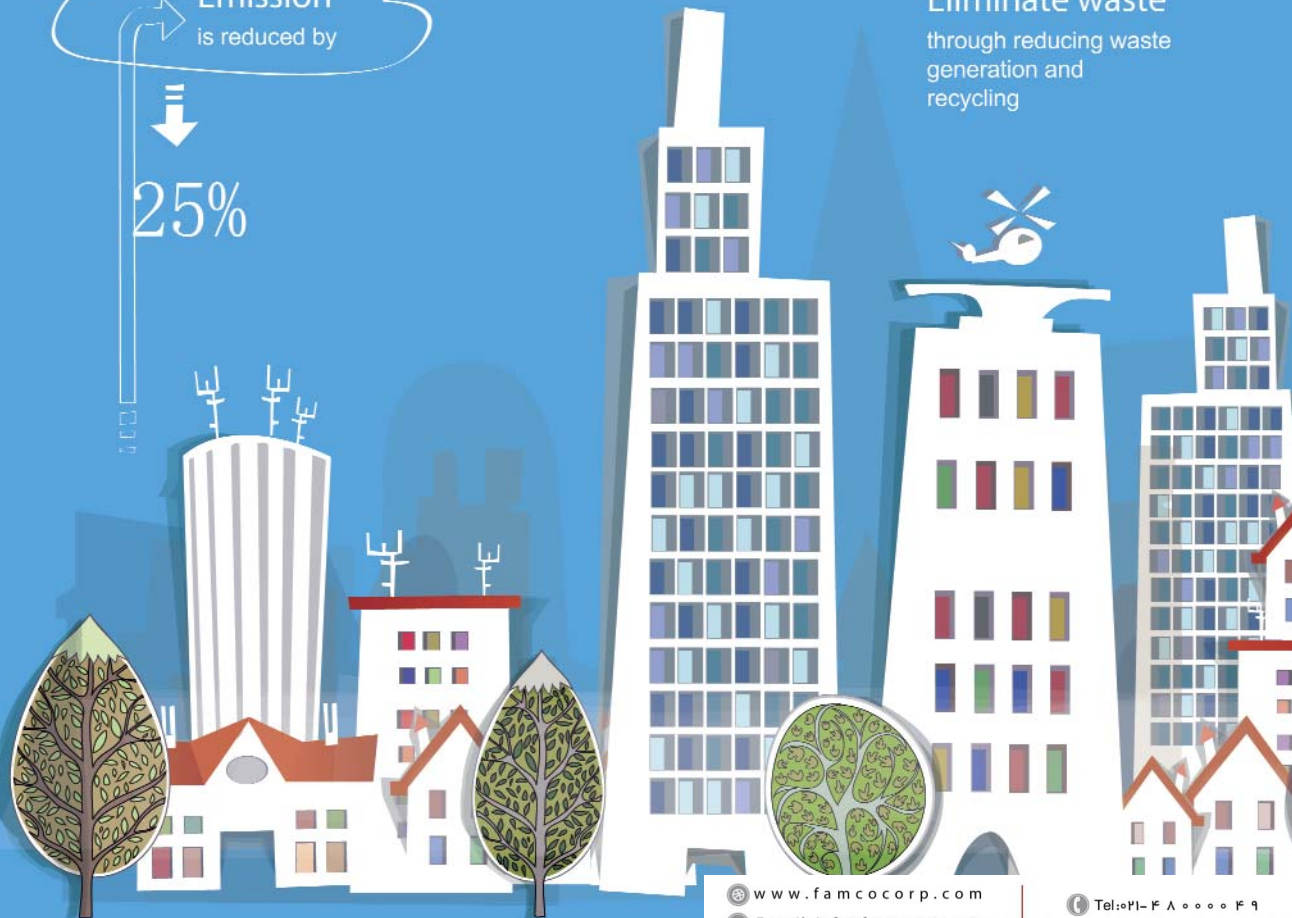
Energy
efficiency improves

25%

Eliminate waste
through reducing waste
generation and
recycling

Emission
is reduced by

25%



www.famcocorp.com
E-mail: info@famcocorp.com
@famco_group

Tel: ۰۲۱-۴۸۰۰۰۰۴۹
Fax: ۰۲۱-۴۴۹۹۴۶۴۲

تهران، کیلومتر ۲ بزرگراه لشگری (جاده مخصوص کرج)
روبروی پالایشگاه نفت پارس، پلاک ۱۲

فن آوران آریا محور
Fanavaran Aria Mehvar Co.

FAMCO
هایپر صنعت



GREEN FUTURE

We still have a long way to go and we are determined to continue contributing to a more sustainable, developed and greener world through our persistent efforts.

We will apply our newly developed Common Rail technology and the electric Injection Management technology to Kipor's third generation of engines and engine products, to enhance their benefits to the mankind. The goal is to make efficient fuel consumption and lower emissions, thus to realize the truly No-Smoke-Emission of Kipor's engines. The turbidity is 7%, which is invisible by human eyes.

We strive to meet the daily needs of the mankind, at the same time we want to take good care of the environment that we all share around the world.



HYDROPOWER STATION

KIPOR provides standby power for Flood Discharge and Security at the Xin'an River Hydropower Station.

COMMUNICATION BASE STATION

The Data Room for Changzhou Telecom needs continuous power supply to avoid data information lost, ensuring signal net coverage and normal work.



RENTAL SERVICES

KIPOR 1200kw Diesel Generator successfully handed over to Shanghai Zhenhua Heavy Industry providing power for repair work on the ships in the docks.

DATA CENTRE

Shandong Unicom Data Center is the largest IDC Room built in north China. KIPOR generators were chosen as standby power for 1st and 2nd stages.



Features and Benefits

One of KIPOR's never ending tasks is to produce high quality environmentally friendly generators. Today KIPOR offers digital generator which are considered advanced, reliable, and with a high quality output.

Inverter Technology

Kipor digital generators deliver a stable, pure sine wave AC output, reliable enough to power computers and other sensitive equipment. The inverter module adjusts the engine speed based on the load required resulting in reduced wear and fuel consumption.

Low Noise Design

Optimized for efficiency resulting in clean digital power.

Overload Protection

The microprocessor control instantly senses an overload or short circuit and immediately shuts off the engine to protect the generator and the load.

Unique Structure / Latest Technology

The generator is cooled by a patented air intake system. The smart throttle power management system, the sound attenuated structure and inverter style output all combine to produce state of the art portable electric power.

Certification

Kipor digital generators have received EPA, CE, CARB, CETL and PSE certifications.

Quality Power

Kipor applies inverter technology to the IG series to produce pure sine wave AC output.

Wide Range of Benefits

In addition to clean, quiet and efficient power, Kipor offers superior overload and low oil level protection to all digital generators.



Choosing the Right Generator

- 1 List the products and tools that you intend to use.
Determine the power requirement for each product. Allow for starting load.

Product	Power requirement

- 2 Total up the wattage of the products that will be used at the same time.
_____ Watts

- 3 Choose the generator that has the closest rated output to your requirements also leaving 10% for contingency.

Appliance	Watts	Appliance	Watts
Fluorescent Lamp	60	Hedge Trimmer	500
Light Bulb	100	Flood Lamp	500
Palm Sander	175	4" Angle Grinder	550
Radio/Hi Fi	200	Fridge / Freezer	700
Colour TV	250	Personal Computer	1200
Central Heating Pump	300	Steam Iron	1250
Strimmer	350	Hair Dryer	1400
Jig Saw	400	600W Microwave	1500
Drill	450	Portable Heater	1500

All **IG** generators come with a

PETROL Generators



MODEL	IG770	IG1000P	IG2000P	IG2600P	IG2600 P/H
Type	Portable/Silent	Portable/Silent	Portable/Silent	Portable/Silent	Portable/Silent
Voltage	230	230	230	230	230
Frequency	50	50	50	50	50
Current	3.04	3.9	7	10	10
Rated Output Kva	0.7	0.9	1.6	2.3	2.3
Max Output Kva	0.77	1.0/1.8P	2.0/3.6P	2.6/4.6P	2.6/4.6P
Battery Charger		12V/5.0A	12V/5.0A	12V/5.0A	12V/5.0A
Noise Level @ 7M dBA	60-65	54-59	61-73	58-65	58-65
Dimensions mm	415 x 220 x 360	420 x 250 x 395	513 x 300 x 430	640 x 330 x 465	640 x 330 x 465
Weight Kg	10.5	14	22	29.5	29.5
Engine Type	ALL MODELS - Single cylinder, in-lined, 4-stroke, air cooled, overhead valve				
Ignition	Electronic	Electronic	Electronic	Electronic	Electronic
Starting	Pull start	Pull start	Pull start	Pull start	Pull start
Tank Capacity - litres	1.55	2.6	3.7	2	5
Running Hours / tank	3-5	5-7	4-6	4-6	4-6
Lube Oil	ABOVE SF SAE 10W-30, 15W-40	ABOVE SF SAE 10W-30, 15W-40	ABOVE SF SAE 10W-30, 15W-40	ABOVE SF SAE 10W-30, 15W-40	ABOVE SF SAE 10W-30, 15W-40
Oil Capacity - litres	0.15	0.2	0.4	0.55	0.55

www.famcocorp.com
E-mail: info@famcocorp.com
@famco_group

Tel: ۰۲۱-۴۸۰۰۰۰۴۹
Fax: ۰۲۱-۴۴۹۹۴۶۴۲

تهران، کیلومتر ۲۱ بزرگراه لشگری (جاده مخصوص کرج)
روبروی پالایشگاه نفت پارس، پلاک ۱۲



MODEL	IG2600/110V	IG3000P	IG4000	IG6000H
Type	Portable/Silent	Silent / Box	Silent / Box	Silent/Box
Voltage	110	230	230	230
Frequency	50	50	50	60
Current	20	12.2	17.4	23.9
Rated Output Kva	2.3	2.8	4	5.5
Max Output Kva	2.6	3.0/5.4P	4.3	6
Battery Charger	12V/5.0A	12V/5.0A	12V/5.0A	12V/5.0A
Noise Level @ 7M dBA	58-65	63-73	65-73	66-75
Dimensions mm	640 x 330 x 465	685 x 430 x 495	785 x 470 x 570	802 x 495 x 655
Weight Kg	29.5	47	70	96
Engine Type	ALL MODELS - Single cylinder, in-lined, 4-stroke, air cooled, overhead valve			
Ignition	Electronic	Electronic	Electronic	Electronic
Starting	Pull start	Pull Start / Electric	Pull Start / Electric	Electric
Fuel type tank Capacity- l	5	13	13	22
Running Hours / tank	4-6	7-10	7-10	7-10
Lube Oil	ABOVE SF SAE 10W-30, 15W-40	ABOVE SF SAE 10W-30, 15W-40	ABOVE SF SAE 10W-30, 15W-40	ABOVE SF SAE 10W-30, 15W-40
Oil Capacity L	0.55	0.6	1.1	1.1



Features and Benefits

The permanent magnet alternator eliminates excitation windings, carbon brushes and rotor slip rings. The construction is much simpler with the stator bolted directly to the engine. The alternator is smaller in size but can achieve an alternator efficiency of 93%. High in reliability, free of radio interference and capable of operating in high humidity and dusty environments.

Stable Output

Application of inverter technology ensures a stable true sine-wave output with total harmonic distortion (THD) less than 1% and voltage and frequency fluctuation less than 1%.

Quiet and Fuel Efficient

Silent design 57 – 70 db(a) at 7 metres, powered by a fuel efficient and long lasting diesel engine lowering the cost of operation.

Compact Structure, High Output

The design is a compact structure resulting in a small size, light weight, quiet and high engine efficiency.

The Kipor diesel inverter generator brings the latest technology to portable generators - the perfect match between the engine and a high efficiency multi-pole alternator and microprocessor controlled inverter system.



More Economy

Engine running speed varies with the load resulting in higher fuel economy and prolonged engine service life. Compared with Kipor conventional generators, Kipor diesel inverters reduce fuel consumption by up to 40%. Users benefit by a much lower cost of operation.

Complete Protection

Low oil pressure, high coolant temperature, over and under voltage, short circuit and incorrect battery connection, these protections are integrated into each set and ensure long, safe and reliable operation.



MODEL	ID6000	ID7000	ID10	ID15	ID20
Type	Silent / Box	Silent / Box	Silent / Box	Silent / Box	Silent / Box
Voltage	230/115	230/115	230/115	230/115	230/115
Frequency	50	50	50	50	50
Current	21.7/43.5	23.9/47.8	41.3/82.6	63/126	84.8/169.6
Rated Output Kva	5	5.5	9.5	14.5	19.5
Max Output Kva	5.5	6	10.5	16	21
Battery Charger					
Noise Level @ 7M dBA	62-69	65-72	66	68	68
Dimensions mm	875*530*750	934*564*750	1250*650*840	1500*780*1000	1600*780*1050
Weight Kg	168	189	285	500	635
Engine Type	Single-cylinder, 4 stroke, air cooled, direct-injected	Single-cylinder, 4 stroke, air cooled, direct-injected	3 Cylinder, in-lined, water-cooled, 4-stroke, turbocharged	3 Cylinder, in-lined, water-cooled, 4-stroke, turbocharged	4 Cylinder, in-lined, water-cooled, 4-stroke, direct-injected
Ignition Starting	Electric	Electric	Electric	Electric	Electric
Tank Capacity - litres	14.5	14.5	20		
Running Hours per tank	6-10	6-10	6-10		



The Kipor Automatic Transfer Switch (ATS) is the safest and easiest way to connect your Kipor generator to your house or property in the event of a power cut. Kipor models built in digital control panels can be used to link into a Kipor ATS switch to allow the generator to be automatically started in the event of a power failure.

Our home is a busy place. There are many reasons to equip your home with a standby generator and it is probably much easier than you think.



Features and Benefits

Your home and business needs power. Kipor generator sets are of professional quality and are designed for residential and office use. All Kipor generators meet or exceed relevant standards for noise and emissions regulations.

- Versatile Power
- Convenient portability
- Stable, clean power
- Safe Shutdown
- Recoil Starter / Electric starter
- Easy Maintenance
- Cleaner, safer and quieter

Robust & Durable

Compact, robust and resilient structures ensure long unit life and quiet operation. Thicker paint treatments resist the wear and tear caused by extreme environmental conditions.

Easy to use

The control panel is simple and easy to operate. Built in monitoring of the units performance provides a high level of information on the generators status.

Control Panel

All operating functions of the generator sets are on the panel. Digital readout displays operating parameters in real time such as output voltage and amperage. Circuit breakers protect the generator from overloads.

www.famcocorp.com
E-mail: info@famcocorp.com
@famco_group

Tel: ۰۲۱ - ۴۸۰۰۰۰۴۹
Fax: ۰۲۱ - ۴۴۹۹۴۶۴۲

تهران، کیلومتر ۲۱ بزرگراه لشگری (جاده مخصوص کرج)
روبروی پالایشگاه نفت پارس، پلاک ۱۲



MODEL	KDE6700T	KDE6700TA	KDE 6700TA3	KDE12STA	KDE12 STA3	KDE19STA	KDE19STA3
Type	Enclosed Diesel	Enclosed Diesel	Enclosed Diesel	Enclosed Diesel	Enclosed Diesel	Enclosed Diesel	Enclosed Diesel
Voltage V	115/230	115/230	230/400	115/230	230/400	115/230	230/400
Current A	19.6/39.2	19.6/39.2	7.9/23.7	37/74	14.5/43.5	62.6/125	23.5/70
Frequency Hz	50	50	50	50	50	50	50
Rated Output KVA	4.5	4.5	5.5	8.5	10	14.4	16.25
Max Output Kva	5	5	6	9.5	11	16.7	18.75
Phase	1	1	3	1	3	1	3
Alternator	Brush/AVR	Brush/AVR	Brush/AVR	Brush/AVR	Brush/AVR	Brush/AVR	Brush/AVR
Display	Voltmeter	Digital	Digital	Digital	Digital	Digital	Digital
Auto Start Option		yes	yes	yes	yes	yes	yes
Noise dBa @ 7M	72	72	72	72	72	70	72
Dimensions mm	930 x 535 x 742	930 x 535 x 742	930 x 535 x 742	1350 x 650 x 760	1350 x 650 x 760	1550 x 720 x 810	1550 x 720 x 810
Weight Kg	170	170	170	310	310	442	442
Engine Type	Air Cooled OHV	Air Cooled OHV	Air Cooled OHV	Water Cooled V	Water Cooled V	Water Cooled Triple	Water Cooled Triple
RPM	3000	3000	3000	3000	3000	3000	3000
Fuel	Diesel	Diesel	Diesel	Diesel	Diesel	Diesel	Diesel
Starting	Electric Only	Electric Only	Electric Only	Electric Only	Electric Only	Electric Only	Electric Only
Tank Capacity - litres	15	15	15	26	26	38	38
Running Time / tank	6-10	6-10	6-10	7-10	7-10	7-10	7-10



Kipor's general generators are essential equipment for reliable power, from the toughest building sites to emergency situation around the world.

Features and Benefits

With the purpose of expanding the generator group, KIPOR has brought out a new series of general generators on the basis of previous technical achievements. Compared with traditional models, diesel general gensets have been greatly improved by technical breakthrough and innovation, which are featured by impressive noise reduction, easy transportation, higher power, easy maintenance, and so on.

- Compact, Powerful and Long-Lasting
- Convenient Use and Maintenance
- All the Safety of KIPOR Products
- Super silent, low noise



MODEL	KDE7000STA	KDE7000STA3
Type	Enclosed Diesel	Enclosed Diesel
Voltage V	115/230	230/400
Current A	18.3/36.5	7.6/22.8
Frequency Hz	50	50
Rated Output KVA	4.2	5.5
Max Output Kva	4.6	6
Phase	1	3
Alternator	Brush/AVR	Brush/AVR
Display	Digital	Digital
Auto Start Option	Yes	Yes
Noise dBa @ 7M	65	65
Dimensions mm	870*645*710	870*645*710
Weight Kg	175	155
Engine Type	Air Cooled OHV	Air Cooled OHV
RPM	3000	3000
Fuel	Diesel	Diesel
Starting	Electric Only	Electric Only
Tank Capacity - litres	15	15
Running Time / tank	6 to 10	6 to 10



Critical power application is an important part of every industry; protecting them starts with reliable KIPOR natural gas generators. Our gas models deliver dependable power in a wide range of output requirements. From small-load residential and business to heavy industry, every KIPOR gas generator is engineered to provide maximum power, performance, flexibility and fuel efficiency. They are compact and sound insulated and work reliably to provide clean backup power when there is a power outage ensuring normal activity at home, with complete peace of mind.

High Quality Power Output

KIPOR's legendary engines and exclusive technology provide greater starting capability for lots of loads.

Quieter Operation

Similar to a typical vacuum cleaner.

Faster Response

KIPOR natural generators restore power immediately an outage occurs, without any interruption of your activities.

MODEL	KNE5500		KNE9000T	
Rated frequency (Hz)	50	60	50	60
Rated output (kVA)	4.5	5	8	8.8
Max. output (kVA)	5	5.5	8.8	9.6
Rated Voltage (V)	115/230	120/240	115/230	120/240
Rated current (A)	39.1/19.6	41.7/20.8	69.6/34.86	73.3/36.7
Rated rotation speed (r/min)	3000	3600	3000	3600
Generator model	KT6		KT12	
Phase NO.	Single phase		Single phase	
Power factor (Cos Φ)	1.0		1.0	
Insulation Grade	B		B	
Pole number	2		2	
Excitation mode	Self-excitation & constant voltage (AVR)			
Engine Model	KN390G		KN690G	
Engine Type	Two cylinder, V-twin, air-cooled, four-stroke,OHV			
Cylinder NO.-bore×stroke (mm)	88 x 64		78 x 72	
Displacement (ml)	389		688	
Compression ratio	8.5:1		8.5:1	
Rated power	7	7.7	12	14
Combustion system	T.C.I		T.C.I	
Spark plug	WR7DC		F6RTC	
Starting system	12V Electric starter		12V Electric starter	
Battery capacityx No.(V-Ah)	12V 11Ahx1		12V 36Ahx1	
Lubrication system	Pressure splashed		Pressure splashed	
Lube oil brand	CD grade or SAE10W-30, 15W-40			
Lube capacity (L)	1.1		1.3	
Gas	Natural gas		Natural gas	
Gas Supply pressure(kPa)	2.0±0.5		2.0±0.5	
Gas consumption (M3/h)	1.66		2.87	
Noise level(7m) [dB(A)]	65-75		68-77	
Stucture type	Silent		Silent	
Overall dimension (L×W×H) (mm)	1000 x 550 x 710		1050 x 630 x 760	
Net weight(kg)	160		200	



Features and Benefits

A commercial-grade KIPOR automatic home generator keeps that rhythm going by providing dependable protection during unexpected power outages. Available with 8.5 to 100kW output capabilities, KIPOR home generators provide worry-free emergency power to support your electrical needs for days, or even weeks. Clean, quiet, automatic backup power - just what your family needs to be safe and comfortable.

- Better performance
- Automatic switching over
- Ultra-silent running
- Integrated control system
- Safer power for sensitive equipments

Delivering the Power You Need

Powerful, flexible, transportable, reliable, durable; KIPOR Generators have it covered on every level.

Unique and Compact Compact

Robust and flexible structures ensure long service life span and quiet operation. Thicker paint treatments ensure operations in extreme environmental conditions Watertight, sound proof canopies have a better effect on heat resistant and sound insulation, providing superb noise level retention.

Low Noise Running

KIPOR applies a unique double air inlet and outlet design. It is equipped with a built-in large sound attenuating muffler and additional sound insulation liners to limit noise.

Easily Transportable

Compact design make it easy to fit into any conditions while working and reduce transportation costs. Equipped with integral central lift point.





MODEL	KDE11SS	KDE16SS	KDE20SS3	KDE25SS	KDE60SS3	KDE75SS3
Type	Silent Diesel	Silent Diesel	Silent Diesel	Silent Diesel	Silent Diesel	Silent Diesel
Voltage V	115/230	115/230	230/400	115/230	230/400	230/400
Current A	37/73.9	56.5/113	24.5/73.5	80/160	72.2/216	89.5/268
Frequency Hz	50	50	50	50	50	50
Rated Output KVA	8.5	13	17	18.5	50	62
Max Output Kva	9.5	14	18.5	20	54	66
Phase	1	1	3	1	3	3
Alternator	Brushless/AVR	Brushless/AVR	Brushless/AVR	Brushless/AVR	Brushless/AVR	Brushless/AVR
Display	Digital	Digital	Digital	Digital	Digital	Digital
Auto Start Option	Yes	yes	yes	yes	yes	yes
Noise dBa @ 7M	51	51	51	51	53	53
Dimensions mm	1570 x 780 x 1050	1570 x 780 x 1050	1570 x 780 x 1050	1900 x 950 x 1200	2250 x 950 x 1300	2700 x 1140 x 1500
Weight Kg	685	720	720	960	1310	1650
Engine Type	water Cooled OHC	water Cooled OHC	water Cooled OHC	water Cooled OHC	water Cooled OHC	water Cooled OHC
Cylinders	3	4	4	4	4	6
RPM	1500	1500	1500	1500	1500	1500
Fuel	Diesel	Diesel	Diesel	Diesel	Diesel	Diesel
Starting	Electric Only	Electric Only	Electric Only	Electric Only	Electric Only	Electric Only

PRO-X Generators

Robustness, safety, Ergonomy, Maintenance, Handling...
Discover all the innovations of the new line Pro-X genset for durable performance!

Safer Output
Battery Switch
Door of access radiator
Improved Radiator
Excellent Cooling Duct
Rain Proof Cap of Exhaust Pipe
Water Filler Cover of Radiator



Safer Output

New output panel and socket board adopt separate design. Safety is greatly improved, meanwhile rain proof is strengthened.



Water Filler Cover of Radiator

Water filler cap of radiator adopts rotating plastic cover, easy for dismantling.



Rain Proof Cap of Exhaust Pipe

There was no exhaust pipe and rain proof function for the previous genset. The new genset adopts rain proof cap of exhaust pipe with better rain proof performance.



Excellent Cooling Duct

The genset adopts top straight ventilation with good ventilation performance, greatly reducing water temperature. The inside temperature can reduce 8 C.



Improved Radiator

The new radiator adopts heat transfer design of 50°C. It is light and compact with large reserving heat dissipation power. The heat dissipation performance is good, especially adapted to harsh environment, easy and convenient for installation and maintenance.



Battery Switch

The battery switch design effectively avoid leakage problem of battery, prolonging service life of it. It is safer to use and improves starting performance of the genset.

Door of access radiator

Facilitate the cleaning and the interview of the radiator.

Environmental friendly package purpose built to go anywhere

KIPOR's new line of Pro-X generators ranging from 11 to 200kVA. The generators are purpose designed to be durable, compact and easy to use. The Pro-X series is a result of KIPOR's innovation to deliver what our customers are demanding.

They incorporate many of the features: strong power, safe to operate, ergonomically designed, easy to service and maintain. And built to withstand the rough on-site handling and are suitable for use in demanding environments, even under the severest conditions.



Features and benefits



Good Cooling System

There is direct ventilation duct on the top of the genset with better ventilation performance. Meanwhile the radiator adopts 50°C heat exchange design, with large cooling power and good heat dissipation performance. The inside temperature can reduce about 8°C, so it can run stably even under extreme high temperature conditions.



Safer Output

Adopt split design of input panel and socket panel to greatly improve safety. Battery switch design effectively avoids battery leakage problem, prolonging service time, safer to use.



Warning Function

Oil-water separator warning function is added in this series. When the water content and impurity of the oil are too high, this separator can filter water content and impurity automatically. When filtering to a certain content, the light on the panel will turn on to warn the customer to drainage water content and impurity.



User-friendly Design

The radiator filter cover adopts rotary plastic cover, easy to dismantle. The new genset has a rain proof cap on the exhaust pipe with better rain proof performance and the whole genset reaches IP54. The integral bottom fuel tank, greatly improve the shortages such as fuel leakage and waste fuel reservation.



Ultra Silent Running

Adopt integral silent design with unique noise reduction technology. The new door lock has pressing function, making the sealing strip fit the genset better. Several kinds of factors effectively reduce the noise.

Features and benefits



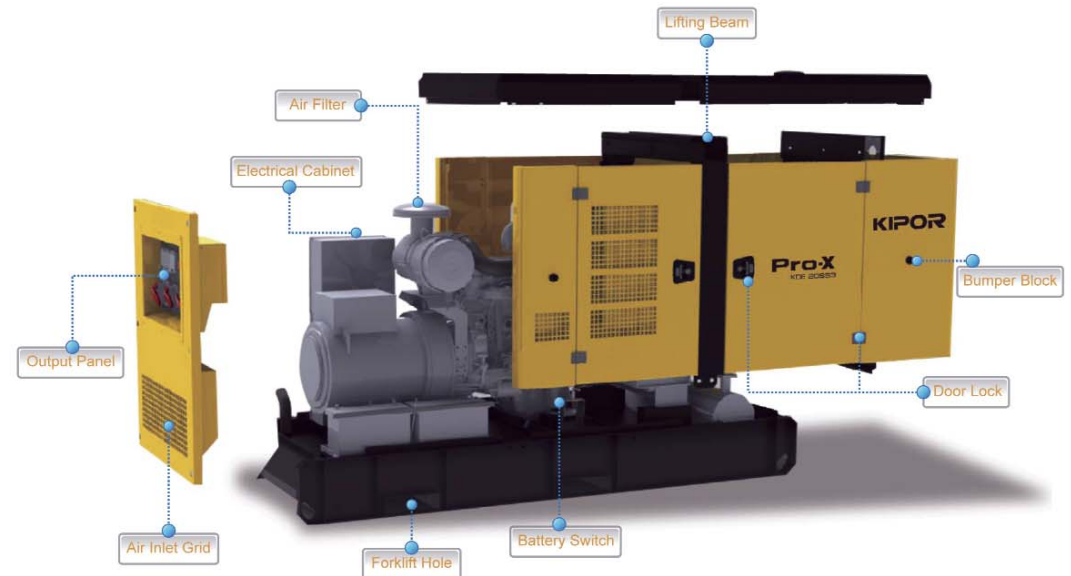
Convenient for maintenance

There are maintenance and check accesses outside the sound enclosure. Open one door for checking and maintenance, more convenient and simpler.



Large Capacity Fuel Tank

The large capacity fuel tank at the bottom of the genset extends the running hours to 14 hours. Compared with the previous genset, it can run another 4 hours, which ensures long time running.



KIP310 Controller

is equipped with digital microprocessor, monitoring, controlling and protecting the genset. Adopt module design, host computer monitoring and remote controlling function can be integrated in an independent control system.

PRO-X Generators

MODEL		KDE14S			KDE18S			KDE22S			KDE33S			KDE37S		
Rated frequency	Hz	50	•	60	50	•	60	50	•	60	50	•	60	50	•	60
Prime power	kVA / KW	11/11	•	13/13	14.2/14.2	•	17/17	17/17	•	21.5/21.5	25/25	•	30/30	30/30	•	36.5/36.5
Standby power	kVA / KW	12.1/12.1	•	14.3/14.3	15.6/15.6	•	18.7/18.7	18.7/18.7	•	23.7/23.7	27.5/27.5	•	33/33	33/33	•	40.2/40.2
Rated voltage	V	115/230	•	120/240	115/230	•	120/240	115/230	•	120/240	115/230	•	120/240	115/230	•	120/240
Rated current	A	95.6/47.8	•	108.3/54.2	123.5/61.7	•	141.7/70.8	148/74	•	179/89.6	217/108.7	•	250/125	261/130.4	•	304/152
Rated rotation speed	r/min	1500	•	1800	1500	•	1800	1500	•	1800	1500	•	1800	1500	•	1800
Generator type		KF14			KF20			KF25			KF35			KF50		
Pole No.		4			4			4			4			4		
Excitation mode		Brushless, self-excitation and constant voltage (with AVR)														
Power factor	COSO	1.0			1.0			1.0			1.0			1.0		
Insulation grade		H			H			H			H			H		
Engine type		3 Cylinder			4 Cylinder, In-Line, 4 Stoke, Direct-Injected, Water-Cooled											
Bore x Stroke	mm	88 x 90			88 x 90			88 x 90			98 x 111			98 x 111		
Displacement	L	1.642			2.19			2.19			3.349			3.349		
Compression ratio		17.6 : 1			17.6 : 1			17.6 : 1			18.5 : 1			18.5 : 1		
Rated power	KW	13.5	•	16.3	18	•	21.6	21.6	•	27	30.5	•	36.5	36.6	•	43.8
Water-cooled water capacity	L	5			6			6			11			11		
Lubrication system		Pressure splashed			Pressure splashed			Pressure splashed			Pressure splashed			Pressure splashed		
Lube oil brand		SAE 10W-30 / 15W-40			SAE 10W-30 / 15W-40			SAE 10W-30 / 15W-40			SAE 10W-30 / 15W-40			SAE 10W-30 / 15W-40		
Lube capacity	L	6.9			8.5			8.5			11			11		
Starter system		12V Electric System			12V Electric System			12V Electric System			12V Electric System			12V Electric System		
Starting motor capacity	V-KW	12V - 1.4KW			12V - 1.4KW			12V - 1.4KW			12V - 2.8KW			12V - 2.8KW		
Charging generator capacity	V-A	14V - 20A			14V - 20A			14V - 20A			12V - 50A			12V - 50A		
Battery capacity	V-Ah	12V - 65Ah			12V - 65Ah			12V - 65Ah			24V - 120Ah			24V - 120Ah		
Engine fuel consumption rate	g/KW.h	225	•	231	225	•	231	225	•	231	215	•	220	230	•	230
Fuel type		Engine fuel consumption: 0 # (summer) -10 # (winter) -35 # (cold)														
Panel type		KP310 Smart Panel			KP310 Smart Panel			KP310 Smart Panel			KP310 Smart Panel			KP310 Smart Panel		
Noise level (1m)	dB(A)	70	•	72	70	•	72	70	•	72	72	•	74	72	•	74
Fuel tank capacity	L	70			70			70			95			95		
Overall dimension	mm	1780 x 840 x 1160			1780 x 840 x 1160			1780 x 840 x 1160			2100 x 980 x 1200			2100 x 980 x 1200		
Net weight	kg	722			795			815			1100			1136		

MODEL		KDE17S3	KDE23S3	KDE28S3	KDE38S3
Rated frequency	Hz	50 • 60	50 • 60	50 • 60	50 • 60
Prime power	kVA / KW	13.8/11 • 16.3/13	17.8/14.2 • 21.3/1	21.3/17 • 27/21.6	31.3/25 • 37.5/30
Standby power	kVA / KW	15.1/12.1 • 17.9/14.3	19.5/15.66 • 23.4/18.7	23.4/18.7 • 29.8/23.8	34.4/27.5 • 41.3/33
Rated voltage	V	400/230 • 416/240	400/230 • 416/240	400/230 • 416/240	400/230 • 416/240
Rated current	A	19.8 • 22.6	25.6 • 29.5	30.7 • 37.5	45.1 • 52
Rated rotation speed	r/min	1500 • 1800	1500 • 1800	1500 • 1800	1500 • 1800
Generator type		KFS18	KFS25	KFS30	KFS45
Pole No.		4	4	4	4
Excitation mode		Brushless, self-excitation and constant voltage (with AVR)			
Power factor	COSφ	0.8 (lag)	0.8 (lag)	0.8 (lag)	0.8 (lag)
Insulation grade		H	H	H	H
Engine type		3 Cylinder	4 Cylinder, In-Line, 4 Stoke, Direct-Injected, Water-Cooled		
Bore x Stroke	mm	88 x 90	88 x 90	88 x 90	98 x 111
Displacement	L	1.642	2.19	2.19	3.349
Compression ratio		17.6 : 1	17.6 : 1	17.6 : 1	18.5 : 1
Rated power	KW	13.5 • 16.3	18 • 21.6	21.6 • 27	30.5 • 36.5
Water-cooled water capacity	L	5	6	6	11
Lubrication system		Pressure splashed	Pressure splashed	Pressure splashed	Pressure splashed
Lube oil brand		SAE 10W-30 / 15W-40	SAE 10W-30 / 15W-40	SAE 10W-30 / 15W-40	SAE 10W-30 / 15W-40
Lube capacity	L	6.9	8.5	8.5	11
Starter system		12V Electric System	12V Electric System	12V Electric System	12V Electric System
Starting motor capacity	V-KW	12V - 1.4KW	12V - 1.4KW	12V - 1.4KW	12V - 1.4KW
Charging generator capacity	V-A	14V - 20A	14V - 20A	14V - 20A	14V - 20A
Battery capacity	V-Ah	12V - 65Ah	12V - 65Ah	12V - 65Ah	12V - 65Ah
Engine fuel consumption rate	g/KW.h	225 • 231	225 • 231	225 • 231	215 • 220
Fuel type		Engine fuel consumption: 0 # (summer) -10 # (winter) -35 # (cold)			
Panel type		KP310 Smart Panel	KP310 Smart Panel	KP310 Smart Panel	KP310 Smart Panel
Noise level (1m)	dB(A)	70 • 72	70 • 72	70 • 72	72 • 74
Fuel tank capacity	L	70	70	70	95
Overall dimension	mm	1780 x 840 x 1160	1780 x 840 x 1160	1780 x 840 x 1160	2100 x 980 x 1200
Net weight	kg	726	805	837	1100

MODEL		KDE46S3	KDE65S3	KDE73S3	KDE85S3	KDE105S3
Rated frequency	Hz	50 • 60	50 • 60	50 • 60	50 • 60	50 • 60
Prime power	kVA / KW	37.5/30 • 45.6/36.5	50/40 • 60/48	60/48 • 70/56	72.5/58 • 70/56	85/68 • 97.5/78
Standby power	kVA / KW	41.3/33 • 50.3/40.2	55/44 • 66/52.8	66/52.8 • 77/61.6	79.8/63.8 • 77/61.6	93.5/74.8 • 107.3/85.8
Rated voltage	V	400/230 • 416/240	400/230 • 416/240	400/230 • 416/240	400/230 • 416/240	400/230 • 416/240
Rated current	A	54.1 • 63.3	72.2 • 83.3	86.6 • 97.2	104.6 • 114.5	122.7 • 135.3
Rated rotation speed	r/min	1500 • 1800	1500 • 1800	1500 • 1800	1500 • 1800	1500 • 1800
Generator type		KFS45	KFS50	KFS70	KFS80	KFS80
Pole No.		4	4	4	4	4
Excitation mode		Brushless, self-excitation and constant voltage (with AVR)				
Power factor	COSφ	0.8 (lag)	0.8 (lag)	0.8 (lag)	0.8 (lag)	0.8 (lag)
Insulation grade		H	H	H	H	H
Engine type		4 Cylinder, In-Line, 4 Stoke, Direct-Injected, Water-Cooled				
Bore x Stroke	mm	98 x 111	114 x 125	114 x 125	114 x 125	114 x 125
Displacement	L	3.349	5.1	5.1	5.1	5.1
Compression ratio		18.5 : 1	17.3 : 1	17.3 : 1	17.3 : 1	17.3 : 1
Rated power	KW	36.6 • 43.3	56 • 66	56 • 66	79 • 92	79 • 92
Water-cooled water capacity	L	11	9.2 (without radiator)	9.2 (without radiator)	9.2 (without radiator)	9.2 (without radiator)
Lubrication system		Pressure splashed	Pressure splashed	Pressure splashed	Pressure splashed	Pressure splashed
Lube oil brand		SAE 10W-30 / 15W-40	SAE 10W-30 / 15W-40	SAE 10W-30 / 15W-40	SAE 10W-30 / 15W-40	SAE 10W-30 / 15W-40
Lube capacity	L	11	20	20	20	20
Starter system		12V Electric System	24V Electric System	24V Electric System	24V Electric System	24V Electric System
Starting motor capacity	V-KW	12V - 2.8KW	24V - 5KW	24V - 5KW	24V - 5KW	24V - 5KW
Charging generator capacity	V-A	12V - 50A	24V - 50A	24V - 50A	24V - 50A	24V - 50A
Battery capacity	V-Ah	24V - 120Ah	12V - 120Ah	12V - 120Ah	12V - 120Ah	12V - 120Ah
Engine fuel consumption rate	g/KW.h	230 • 230	220 • 225	220 • 225	220 • 225	220 • 225
Fuel type		Engine fuel consumption: 0 # (summer) -10 # (winter) -35 # (cold)				
Panel type		KP310 Smart Panel	KP310 Smart Panel	KP310 Smart Panel	KP310 Smart Panel	KP310 Smart Panel
Noise level (1m)	dB(A)	72 • 74	73 • 75	73 • 75	73 • 75	74 • 76
Fuel tank capacity	L	95	200	200	200	200
Overall dimension	mm	2100 x 980 x 1200	2900 x 1150 x 1600	2900 x 1150 x 1600	2900 x 1150 x 1600	2900 x 1150 x 1600
Net weight	kg	1136	1940	1970	2010	2040

MODEL		KDE118S3		KDE145S		KDE175S	
Rated frequency	Hz	50	• 60	50	• 60	50	• 60
Prime power	kVA / KW	100/80	• 117.5/94	125/100	• 145/116	150/120	• 175/140
Standby power	kVA / KW	110/88	• 129.3/103.4	138/110	• 160/128	165/132	• 193/154
Rated voltage	V	400/230	• 416/240	400/230	• 416/240	400/230	• 416/240
Rated current	A	144.3	• 163.1	180.4	• 201.2	216.5	• 242.9
Rated rotation speed	r/min	1500	• 1800	1500	• 1800	1500	• 1800
Generator type		KFS113		KFS125		KFS150	
Pole No.		4		4		4	
Excitation mode		Brushless, self-excitation and constant voltage (with AVR)					
Power factor	COSO	0.8 (lag)		0.8 (lag)		0.8 (lag)	
Insulation grade		H		H		H	
Engine type		4 Cylinder, In-Line, 4 Stoke, Direct-Injected, Water-Cooled					
Bore x Stroke	mm	114 x 125		114 x 125		114 x 125	
Displacement	L	5.1		7.65		7.65	
Compression ratio		17.3 : 1		17.3 : 1		17.3 : 1	
Rated power	KW	95	• 110	119	• 137.5	143	• 165
Water-cooled water capacity	L	9.2 (without radiator)		14.5 (without radiator)		14.5 (without radiator)	
Lubrication system		Pressure splashed		Pressure splashed		Pressure splashed	
Lube oil brand		SAE 10W-30 / 15W-40		SAE 10W-30 / 15W-40		SAE 10W-30 / 15W-40	
Lube capacity	L	20		33		33	
Starter system		24V Electric System		24V Electric System		24V Electric System	
Starting motor capacity	V-KW	24V - 5KW		24V - 5KW		24V - 5KW	
Charging generator capacity	V-A	24V - 50A		24V - 50A		24V - 50A	
Battery capacity	V-Ah	12V - 120Ah		12V - 120Ah		12V - 120Ah	
Engine fuel consumption rate	g/KW.h	220	• 225	220	• 225	220	• 225
Fuel type		Engine fuel consumption: 0 # (summer) -10 # (winter) -35 # (cold)					
Panel type		KP310 Smart Panel		KP310 Smart Panel		DSE7320 Panel	
Noise level (1m)	dB(A)	75	• 78	75	• 78	76	• 78
Fuel tank capacity	L	200		280		280	
Overall dimension	mm	2900 x 1150 x 1600		2900 x 1150 x 1600		3300 x 1150 x 1750	
Net weight	ka	2090		2430		2481	





Features and Benefits

Better Cooling Ability

Due to its advanced cooling system, the containerised generator set ensures 100% power at 40 C at an altitude of 1000 meters. This makes the generators ideally suited for use in extreme temperatures and high altitudes, towering the risk of shutdowns.

Low Operating Noise

The container's inner side air inlet and outlet are covered by sound insulating material and applies an exhaust silencer and rippled flex tube. This ensures an ultra-silent operation and the optimum choice for noise sensitive areas.

Superior Standard Configuration

The standard protection systems and accessories ensure the containerized generator set can run in extreme and difficult conditions.

Superior Service Accessibility

The radiator, engine and alternator is installed on a steel inner bottom platform Dual side access doors with a flexible rubber strip edge seal and supplied service tools make for effortless maintenance and service The stainless steel hinges offer increased longevity

Engine Features

The engine design is 4 stroke, water cooled, 4 valve per cylinder with air to air intercooling.

- Single stage turbocharging
- High pressure common rail fuel system
- ESC in-line fuel pump (optional)
- Standardized design
- SAE standard port

KIPOR Brushless, Synchronous Alternator

Four pole rotating magnetic field, self-ventilating radiation system formed by the rotor blade 2/3 pitch winding This effectively eliminates sub or ultra- harmonic distortion and increases paralleling capabilities.

Control System

The controller is a state of the art smart generator control system developed by KIPOR. It features an LCD screen, auto start / stop, data measurement / logging, alarm protection and remote control operation. Additionally, it supports functions such as multi-level backup and multi-unit paralleling.



MODEL		KDE800B2			KDE1200B2			KDE1800B2			KDE2350B4		
Rated frequency	Hz	50	•	60	50	•	60	50	•	60	50	•	60
Prime power	kVA / KW	687.5/550	•	800/640	1031/825	•	1200/960	1500/1200	•	1800/1440	2025/1620	•	2350/1880
Standby power	kVA / KW	750/600	•	875/700	1135/908	•	1310/1048	1650/1320	•	1960/1568	2225/1780	•	2585/2068
Rated voltage	V	400/230	•	416/240	400/230	•	416/240	400/230	•	416/240	400/230	•	416/240
Rated current	A	992	•	1100	1488	•	1665	2165	•	2498	2923	•	3262
Rated rotation speed	r/min	1500	•	1800	1500	•	1800	1500	•	1800	1500	•	1800
Generator type		KFS750			KFS1130			KFS1500			KFS2150		
Pole No.		4			4			4			4		
Excitation mode		Brushless, self-excitation and constant voltage (with AVR)											
Power factor	COSO	0.8 (lag)			0.8 (lag)			0.8 (lag)			0.8 (lag)		
Insulation grade		H			H			H			H		
Engine type		12 Cylinder*			8 Cylinder*			12 Cylinder*			16 Cylinder*		
Bore x Stroke	mm	131 x 152			171 x 210			171 x 210			171 x 210		
Displacement	L	24.6			38.58			57.87			77.16		
Compression ratio		16 : 1			15.5 : 1			15.5 : 1			15.5 : 1		
Rated power	KW	625	•	735	918	•	1050	1360	•	1570	1800	•	2088
Water-cooled water capacity	L				85			145			180		
Lubrication system		Pressure splashed			Pressure splashed			Pressure splashed			Pressure splashed		
Lube oil brand		SAE 15W - 40			SAE 15W - 40			SAE 15W - 40			SAE 15W - 40		
Lube capacity	L	min 41 / max 59			min 100 / max 135			min 170 / max 210			min 192.4170 / max 269.4		
Starter system		24V Electric System			24V Electric System			24V Electric System			24V Electric System		
Starting motor capacity	V-KW	24V - 12KW			24V - 11KW			24V - 11x2			24V - 11x2		
Charging generator capacity	V-A	28V - 95A			28V - 95A			28V - 95A			28V - 95A		
Battery capacity	V-Ah	12V - 200x4			12V - 200x2			12V - 150x4			12V - 150x4		
Engine fuel consumption rate	g/KW.h	195	•	205	200	•	210	200	•	210	200	•	210
Fuel type		Engine fuel consumption: 0 # (summer) -10 # (winter) -35 # (cold)											
Panel type		KP610 Smart Panel			KP610 Smart Panel			KP610 Smart Panel			KP610 Smart Panel		
Output - Receptacle	dB(A)	Without			Without			Without			Without		
Output - Connection Pole	L	Without			Without			Without			Without		
Container Size		20' ISO Standard			20' ISO Standard			20' ISO Standard			20' ISO Standard		
		*4-Stroke, V-Type, Water Cooled, Turbochared, Air-air Intercooled											



DEALER / DISTRIBUTOR

Kipor UK, 20 Station Road, Rowley Regis, West Midlands. B65 0JU
T 0121 296 2041 • F 0121 561 6761

www.kiporuk.co.uk