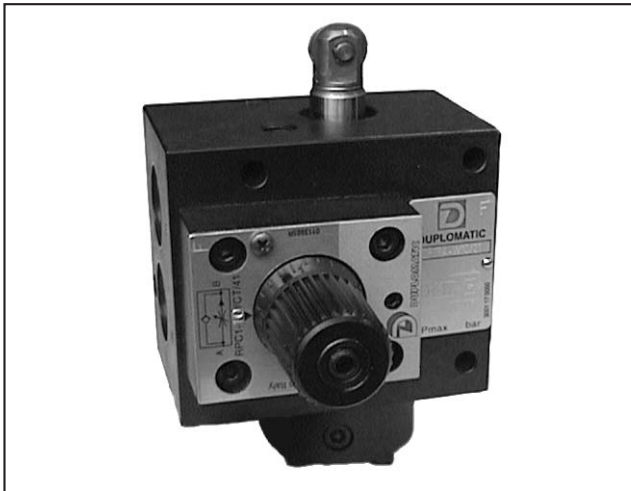




**DIPLOMATIC**  
HYDRAULICS

36 100/107 ED



# CP1R\*-W

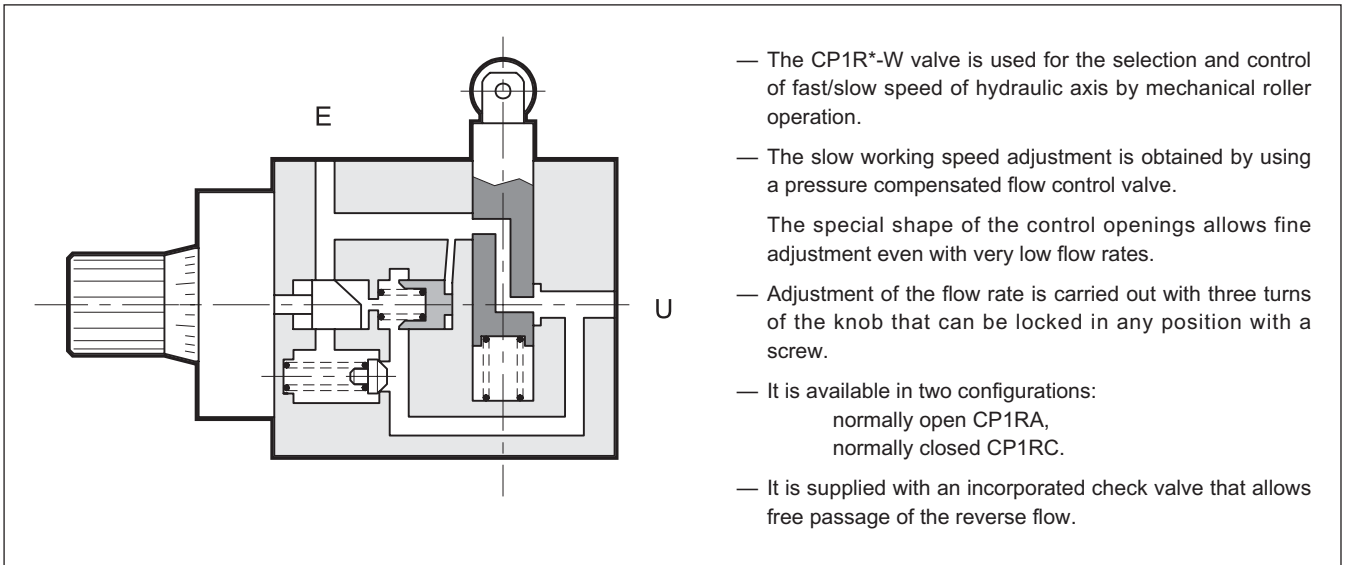
## ROLLER OPERATED FAST/SLOW SPEED SELECTION VALVE

SERIES 21

### THREADED PORTS

**p** max 70 bar  
**Q** max 40 l/min

### OPERATING PRINCIPLE



### CONFIGURATIONS (see Hydraulic symbols table)

- CP1RA-W: normally open - fast movement with roller in rest position and controlled slow movement with roller in operation.
- CP1RC-W: normally closed - controlled slow movement with roller in rest position and fast movement with roller in operation.

### PERFORMANCES (obtained with mineral oil with viscosity of 36 cSt at 50°C)

Maximum operating pressure	bar	70
Fast movement maximum flow rate	l/min	40
Controlled slow movement flow rate	max	l/min 4 - 10 - 16
	min	l/min 0,1
Roller working movement	mm	6
Ambient temperature range	°C	-20 / +50
Fluid temperature range	°C	-20 / +80
Fluid viscosity range	cSt	10 + 400
Fluid contamination degree	According to ISO 4406:1999 class 20/18/15	
Recommended viscosity	cSt	25
Massa	kg	3,2

### HYDRAULIC SYMBOLS

