



M63

PRESSURE GAUGE

SERIES 10

in compliance with EN 837-1

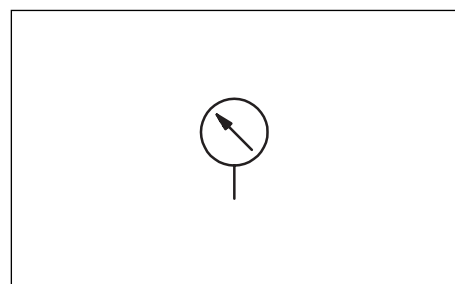
TECHNICAL CHARACTERISTICS

Nominal diameter	mm	63		
Nominal pressure	bar	0 ÷ 6 0 ÷ 25 0 ÷ 160	0 ÷ 10 0 ÷ 60 0 ÷ 250	0 ÷ 16 0 ÷ 100 0 ÷ 400
Static pressure	3/4 of the end scale value			
Dynamic pressure	2/3 of the end scale value			
Limit pressure	end scale value for short period			
Precision class according to EN 837-1/6	1.6			
Thermal drift	± 0,4% / 10K in the measure range			
Protection class according to EN 60529 - IEC 529	IP 65			
Ports according to EN 837-1/6	1/4" BSP			
Ports material	copper alloy			
Sensible element: 0 ÷ 6, 0 ÷ 10, 0 ÷ 16, 0 ÷ 25, 0 ÷ 60. 0 ÷ 100, 0 ÷ 160, 0 ÷ 250, 0 ÷ 400.	copper alloy, type-C, braze welding spring copper alloy, helical, braze welding spring			
Movements	copper alloy			
Dial	white plastic with lock pins in black plastic			
Case	stainless steel with natural finishing, and OR between case and shank			
Display	transparent plastic			
Filling liquid	glycerin 85% + distilled water 15%			
Marking CE	in compliance with 97/23/CE of 29.05.97 art. 3 par. 3			
Working temperature range	°C	-20 / +60		
Mass	kg	0,24		

DESCRIPTION

- The pressure gauges M63 are pressure indicators used on hydraulic systems.
- They guarantee a correct pressure measurement also with pulsations and vibrations.
- They are available in 9 different pressure scales and with 2 connection types for mounting with radial port or rear port with flange connector.
- The case is made of stainless steel and the connection is made of copper alloy.
- The filling in liquid is made of 85% glycerin and 15% distilled water.
- As they are realised in compliance with 97/23/CE of the 29-05-97 art. 3 par. 3, only the ones with the end scale of 250 and 400 bar have the marking CE on the dial.
- The construction and the realisation have been done according to EN 837-1.

HYDRAULIC SYMBOL





M63

SERIES 10

1 - IDENTIFICATION CODE

M	63	-		/	10	
---	----	---	--	---	----	--

Pressure gauge _____

Dial nominal diameter _____
63 = 63 mm

Pressure gauge scale _____

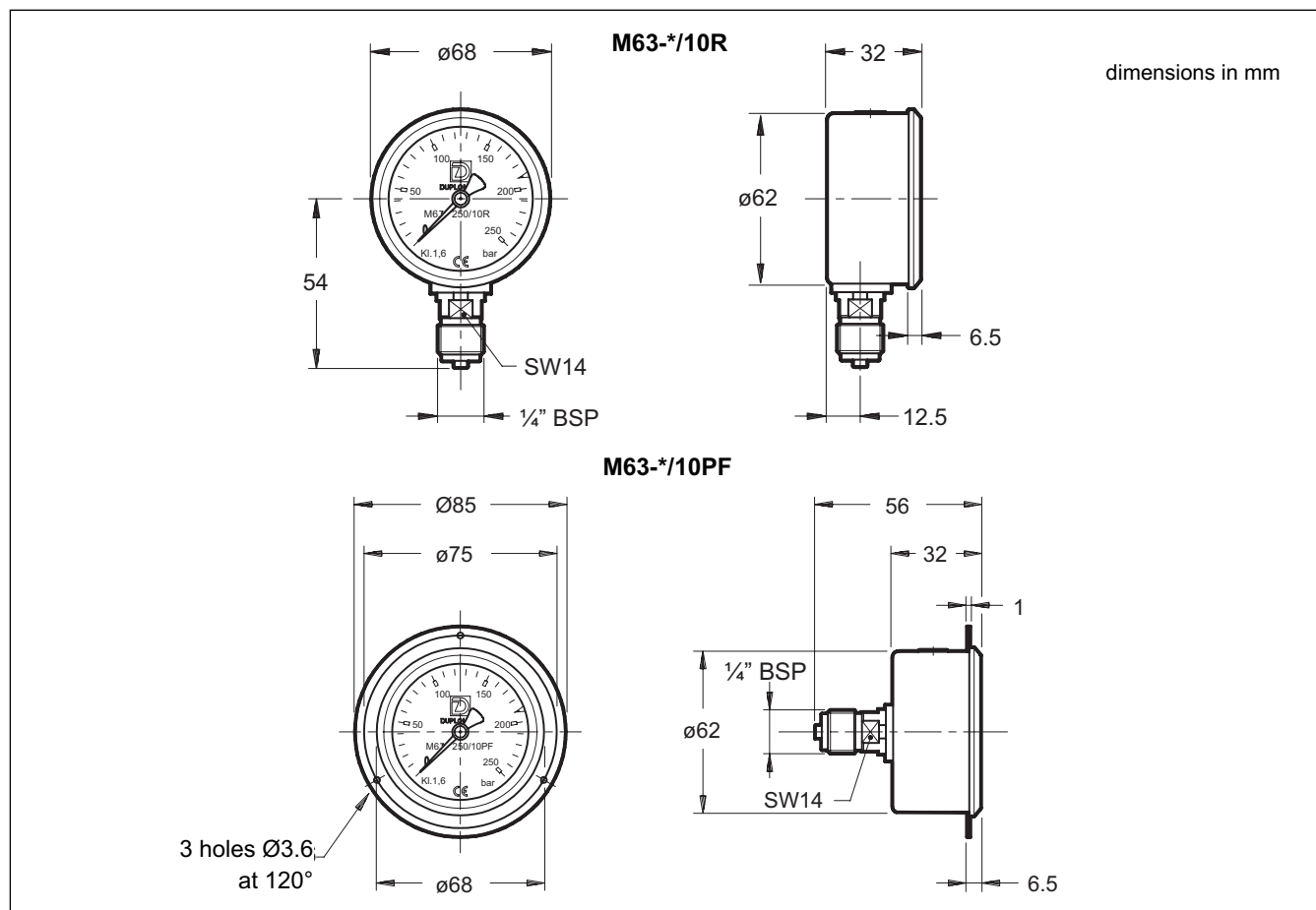
Connection type:
R = radial connector
PF = flange connector

Series no.: (the overall and mounting dimensions remain unchanged from 10 to 19)

006 = 0 ÷ 06 bar **060** = 0 ÷ 60 bar **400** = 0 ÷ 400 bar
010 = 0 ÷ 10 bar **100** = 0 ÷ 100 bar
016 = 0 ÷ 16 bar **160** = 0 ÷ 160 bar
025 = 0 ÷ 25 bar **250** = 0 ÷ 250 bar

NOTE: The models n° 006, 010, 016 and 025 are available with radial connector (**R**) only.

2 - OVERALL AND MOUNTING DIMENSIONS



DUPLOMATIC OLEODINAMICA SpA
20025 LEGNANO (MI) - P.le Bozzi, 1 / Via Edison
Tel. 0331/472111-472236 - Fax 0331/548328