



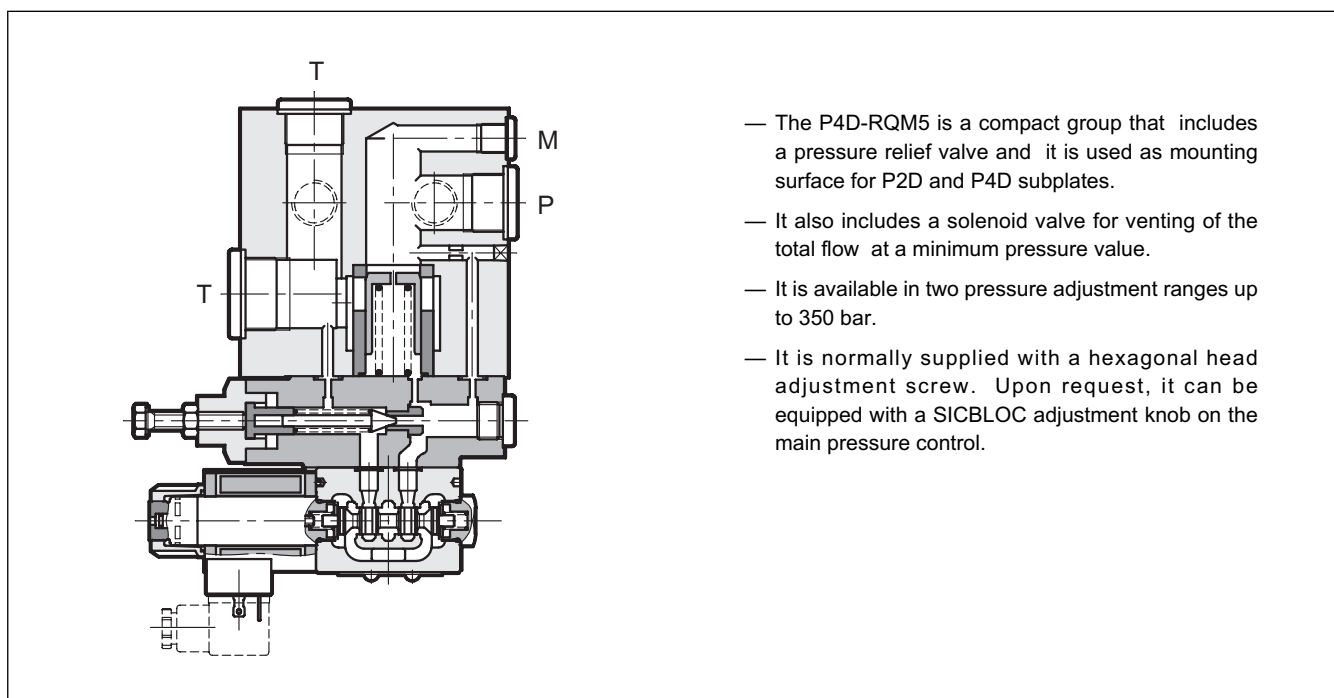
P4D-RQM5

MODULAR SUBPLATE WITH PRESSURE RELIEF VALVE AND UNLOADING SOLENOID VALVE

SERIES 30

p max **350** bar
Q max **250** l/min

OPERATING PRINCIPLE

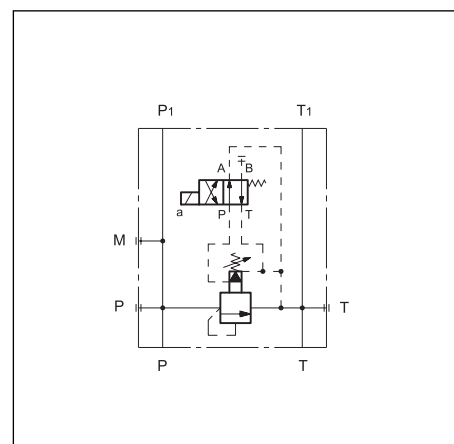


PERFORMANCES (measured with mineral oil of viscosity 36cSt at 50°C)

Maximum operating pressure	bar	350
Maximum flow on P (3/4") and T (1")		250
Maximum flow on P ₁ and T ₁ (1/2")	l/min	120
Minimum flow		10
Ambient temperature range	°C	-20 / +50
Fluid temperature range	°C	-20 / +80
Fluid viscosity range	cSt	10 ÷ 400
Fluid contamination degree	According to ISO 4406:1999 class 20/18/15	
Recommended viscosity	cSt	25
Mass:	kg	10

NOTE: for the solenoid valve DS3 characteristics see catalogue 41 150

HYDRAULIC SYMBOL





P4D-RQM5

SERIES 30

1 - IDENTIFICATION CODE

P	4	D	-	R	Q	M	5	-	/	/	30	-	K1	/	
---	---	---	---	---	---	---	---	---	---	---	----	---	----	---	--

Subplate
ISO 4401-05 (CETOP 05)
dimension

Pressure relief valve
with unloading solenoid valve

DN 25 nominal dimension

Pressure adjustment range
5 = 250 bar 6 = 350 bar

M = SICBLOC adjustment knob
(omit for hexagonal head
adjustment screw)

Series: (the overall and mounting dimensions
remain unchanged from 30 to 39)

Seals:

N = NBR seals for mineral oil (standard)
V = FPM seals for special fluids

Manual override:
omit for override
integrated in the
tube (standard)
CM = manual
override, boot
protected

Coil electrical connection:
plug for connector type DIN
43650 (standard)

DC power supply

D12 = 12 V
D24 = 24 V
D48 = 48 V
D110 = 110 V
D220 = 220 V
D00 = valve without coils (see NOTE)

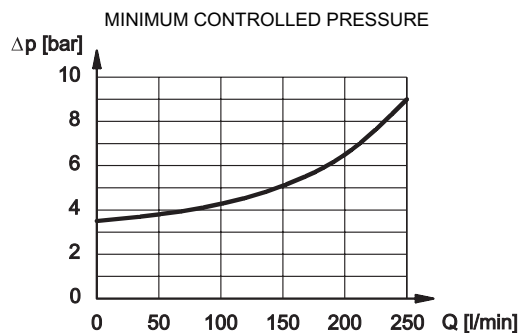
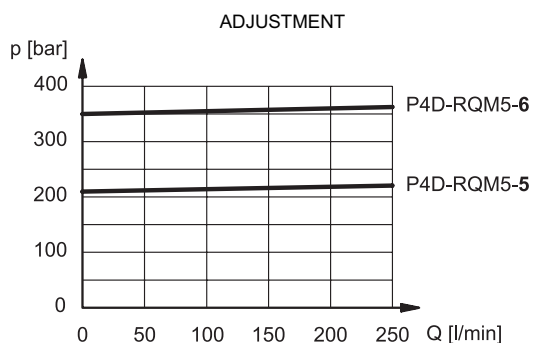
AC power supply

A24 = 24 V - 50 Hz
A48 = 48 V - 50 Hz
A110 = 110 V - 50 Hz / 120 V - 60 Hz
A230 = 230 V - 50 Hz / 240 V - 60 Hz
A00 = valve without coils (see NOTE)

F110 = 110 V - 60 Hz
F220 = 220 V - 60 Hz

NOTE: The locking rings of the coils and the relevant O-Rings are supplied together
with valves.

2 - CHARACTERISTIC CURVES (values obtained with viscosity of 36 cSt at 50°C)



NOTE: The maximum flow deliverable to P₁ port is 120 l/min (for P2D and P4D modular subplates).
The maximum flow through the pressure relief valve (additional 3/4" BSP P port) is 250 l/min.

3 - HYDRAULIC FLUIDS

Use mineral oil-based hydraulic fluids HL or HM type, according to ISO 6743-4. For these fluids, use NBR seals. For fluids HFDR type (phosphate esters) use FPM seals (code V). For the use of other kinds of fluid such as HFA, HFB, HFC, please consult our technical department. Using fluids at temperatures higher than 80 °C causes a faster degradation of the fluid and of the seals characteristics. The fluid must be preserved in its physical and chemical characteristics.



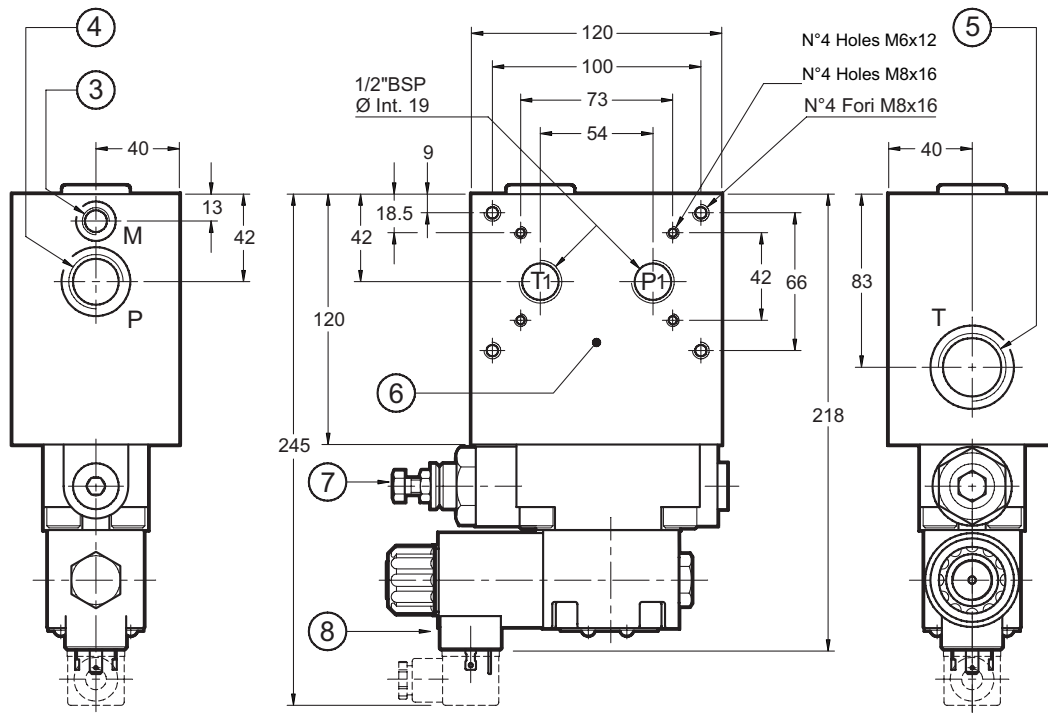
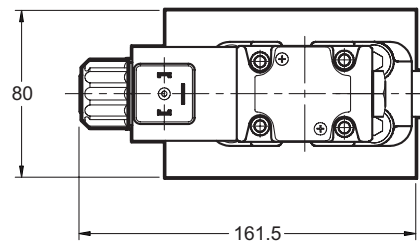
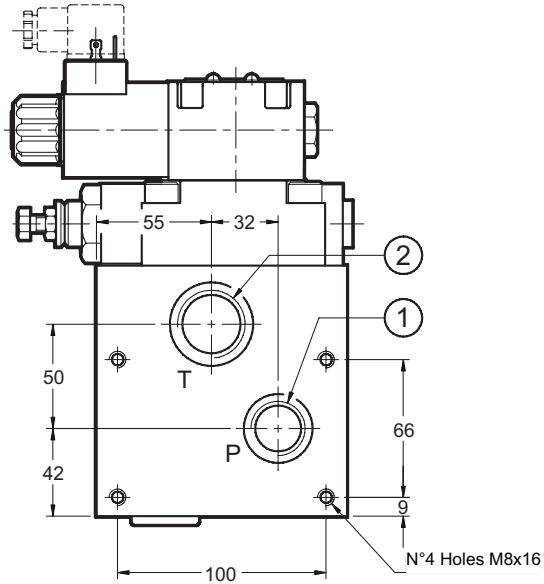
P4D-RQM5

SERIES 30

4 - OVERALL AND MOUNTING DIMENSIONS

1	Pressure port P 3/4" BSP
2	Tank port T 1" BSP
3	Pressure gauge port M 1/4" BSP
4	Additional P port 3/4" BSP
5	Additional T port 1" BSP
6	Mounting surface for: P2D ISO 4401-03 (CETOP 03) P4D ISO 4401-05 (CETOP 05)
7	Hexagonal head pressure adjustment screw: spanner 13 Clockwise rotation to increase pressure
8	Unloading solenoid valve

dimensions in mm



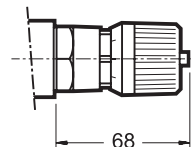


P4D-RQM5

SERIES 30

5 - ADJUSTMENT KNOB

The P4D-RQM5 valves can be equipped with a SICBLOC adjustment knob.
To operate it, push and rotate at the same time.
To request this option, add: /**M** (see par.1).



6 - ELECTRIC CONNECTORS

The solenoid valves are never supplied with connector. Connectors must be ordered separately. For the identification of the connector type to be ordered, please see catalogue 49 000.

7 - MANUAL OVERRIDE, BOOT PROTECTED: **CM**

Whenever the solenoid valve installation may involve exposure to atmospheric agents or utilization in tropical climates, use of the manual override, boot protected, is recommended.

Add the suffix **CM** to request this device (see paragraph 1).

For overall dimensions see catalogue 41 150.



DIPLOMATIC OLEODINAMICA SpA

20025 LEGNANO (MI) - P.le Bozzi, 1 / Via Edison
Tel. 0331/472111 - Fax 0331/548328