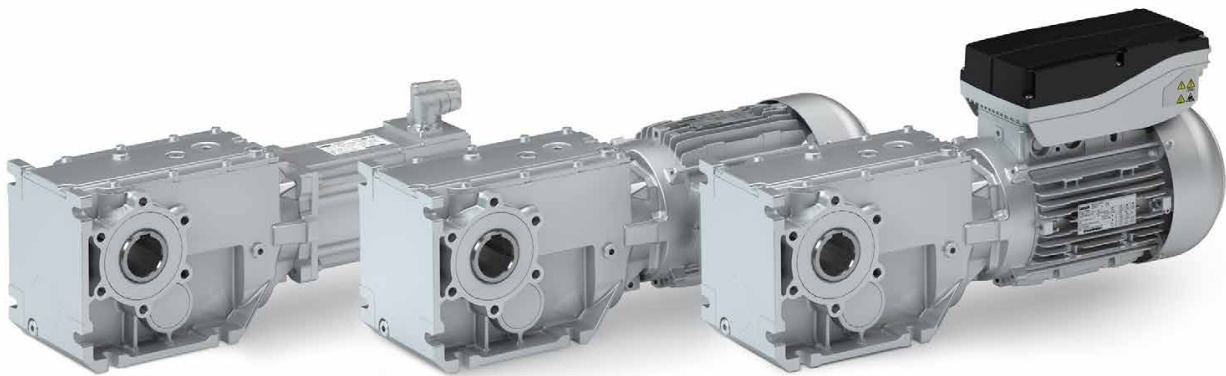


Efficiency and accuracy in the application.



The efficient bevel gearboxes are characterized by high permissible radial forces, closely stepped transmission ratios and a low backlash.

They are available in a 2-stage, 3-stage and 4-stage design with a torque of up to 20,000 Nm and a ratio of up to $i = 3,600$.

Highlights

- Energy efficiency classes for an economic and future-proof use in many applications and countries
- High-efficient right-angle gearbox in a compact design makes optimal use of mounting space
- Standardized shaft and flange dimensions for easy machine integration
- Low backlash and high torsional stiffness ensure exact positioning task results

Bevel geared motors are a compact, powerful drive unit. Numerous options at the input and output ends ensure that the drive can be easily and precisely adjusted to suit your application.

Types m550 and MF

- With IE2 and IE3 three-phase AC motors according to the ErP Directive: Power range 0.12 ... 55 kW
- With inverter-optimized MF three-phase AC motors: Power range 0.55 ... 22 kW

Types Lenze Smart Motor

- With m300 Lenze Smart Motors: Rated torque of 1.75 Nm and 5 Nm

Types MCS, m850 and MCA

- With synchronous servo motors and asynchronous servo motors: Power range: 0.25 ... 38.4 kW



m550



Lenze Smart Motor



MCS



m850



MCA

Matched to your ambient conditions

Gearboxes with	Three-phase AC motors	Lenze Smart Motor	Servo motors
Degree of protection (EN 60529)	IP55		IP54/IP65
Energy efficiency class	IE2, IE3 or inverter-optimized		
Approvals	cURus, EAC, CCC and UkrSepro		
Storage temperature	-30 ... 60 °C		
Operating temperature	-20 ... 40 °C		

Surface and corrosion protection

Gearboxes with	Three-phase AC motors, Lenze Smart Motors, servo motors
OKS-G (primed)	1K priming coat
OKS-S (small)	2K-PUR top coat
OKS-M (medium)	1K priming coat, 2K-PUR top coat
OKS-L (large)	2K-EP priming coat, 2K-PUR top coat

Technical data

Gearbox size		g500-B45	g500-B110	g500-B240	g500-B450	g500-B600	g500-B820	g500-B1500	g500-B2700	g500-B4300	g500-B8000	g500-B13000	g500-B20000
Rated torque	Nm	45	110	240	450	600	820	1500	2700	4300	8000	13000	20000
Ratio range		5 - 60	5 - 100	4 - 3600	5 - 2500	5 - 2500	5 - 2500	7 - 2500	7 - 2600	5 - 2600	7 - 240	7 - 220	12 - 200
Solid shaft dimensions	mm	20	20	30	30	40	40	50	60	70	90	110	120
		x 40	x 40	x 60	x 60	x 80	x 80	x 100	x 120	x 140	x 170	x 210	x 210
Hollow shaft dimensions	mm	18	20	30	35	40	40	50	60	70	90	100	120
		20	25	35	40	45	45	55	70	80	90	100	120
Shrink disc dimensions	mm	20	20	30 35	35	40	40	50	65	75 80	95	105	125
Flange dimensions	mm	110	120	160	200	200	200	250	350	400	450	550	660
		120	160	200	250	250	250	300	350	450	450	550	660

Lightweight and highly efficient.



Our bevel gearboxes are a showpiece in lightweight engineering. They are also highly efficient and equipped with wear-free teeth.

They are available in a 2-stage version with torque of to 450 Nm and a ratio of up to $i=76$.

Models

- 2-stage gearboxes
- Hollow shaft with keyway or shrink disc
- Solid shaft with feather key
- Foot or flange mounting
- Torque plate, including rubber buffer

Technical data

Gearbox size		GKR03	GKR04	GKR05	GKR06
Max. torque	[Nm]	45	90	240	450
Ratio range		5.4 - 62	5.2 - 61	3.6 - 76	3.4 - 69
Dimensions					
Hollow shaft	[mm]	18/20	20/25	30/35	40/45
Solid shaft	[mm]	20 x 40	20 x 40	30 x 60	35 x 70
Flange	[mm]	110/1200	120/160	160/200	200/250

GKR bevel geared motors

Gearboxes



When combined with our integrated three-phase AC motors and servo motors, bevel gearboxes form a compact, effective drive unit. Numerous drive-end and output-end options allow precise matching of the drive to your specific application.

Models

- With three-phase AC motors in line with the ErP Directive in the power range from 0.06 to 7.5 kW
- With servo motors in the power range from 0.25 to 7.1 kW
- As a Drive Package with the decentralised Inverter Drives 8400 motec, covering the power range up to 7.5 kW.

Matched to your environmental conditions

Gearboxes with	Three-phase AC motors	Servo motors
Degree of protection		
EN 60529	IP55	IP54 / IP65
Approvals	cURus, EAC, CCC and UkrSepro	
Climatic conditions		
Storage temperature	-30°C to +60°C	
Operating temperature	-20°C to +40°C	
Surface and corrosion protection		
OKS-G (primed)	1K primer coat	
OKS-S (small)	2K-PUR top coat	
OKS-M (medium)	1K primer coat 2K-PUR top coat	
OKS-L (large)	2K-EP primer coat 2K-PUR top coat	

Precise positioning.



The high degree of torsional stiffness and low backlash offered by our helical-bevel gearboxes facilitate extremely precise and reproducible positioning. Optimised tooth profiles and ground gears ensure low-noise operation and low backlash.

They are available in 3-stage and 4-stage versions with torque of to 11,639 Nm and a ratio of up to $i=1,936$.

Models

- 3-stage and 4-stage gearboxes
- Hollow shaft with keyway or shrink disc
- Solid shaft with feather key
- Foot or flange mounting
- Torque plate, including rubber buffer

Technical data

Gearbox size		GKS04	GKS05	GKS06	GKS07	GKS09	GKS11	GKS14
Max. torque	[Nm]	190	331	702	1330	3080	6072	11639
Ratio range		5.1 - 300	6.9 - 1935	6.5 - 1511	6.0 - 1440	12 - 1413	12 - 1411	12 - 1393
Dimensions								
Hollow shaft	[mm]	25/30	30/35	40/45	50/55	60/70	70/80	100
Solid shaft	[mm]	25 x 50	30 x 60	40 x 80	50 x 100	60 x 120	80 x 160	100 x 200
Flange	[mm]	160	200	200/250	250/300	350	400/450	450

GKS helical-bevel geared motors

Gearboxes



When combined with our integrated three-phase AC motors and servo motors, our helical-bevel gearboxes form a compact, effective drive unit. Numerous drive-end and output-end options allow precise matching of the drive to your specific application.

Models

- With three-phase AC motors in line with the ErP Directive in the power range from 0.12 to 45 kW
- With servo motors in the power range from 0.25 to 20.3 kW
- As a Drive Package with the decentralised Inverter Drives 8400 motec, covering the power range up to 7.5 kW.

Matched to your environmental conditions

Gearboxes with	Three-phase AC motors	Servo motors
Degree of protection		
EN 60529	IP55	IP54 / IP65
Approvals	cURus, EAC, CCC and UkrSepro	
Climatic conditions		
Storage temperature	-30°C to +60°C	
Operating temperature	-20°C to +40°C	
Surface and corrosion protection		
OKS-G (primed)	1K primer coat	
OKS-S (small)	2K-PUR top coat	
OKS-M (medium)	1K primer coat 2K-PUR top coat	
OKS-L (large)	2K-EP primer coat 2K-PUR top coat	

Precise positioning.



The high degree of torsional stiffness and low backlash offered by our helical-bevel gearboxes facilitate extremely precise and reproducible positioning. Optimised tooth profiles and ground gears ensure low-noise operation and low backlash.

They are available in 3-stage and 4-stage versions with torque of to 11,639 Nm and a ratio of up to $i=1,936$.

Models

- 3-stage and 4-stage gearboxes
- Hollow shaft with keyway or shrink disc
- Solid shaft with feather key
- Foot or flange mounting
- Torque plate, including rubber buffer

Technical data

Gearbox size		GKS04	GKS05	GKS06	GKS07	GKS09	GKS11	GKS14
Max. torque	[Nm]	190	331	702	1330	3080	6072	11639
Ratio range		5.1 - 300	6.9 - 1935	6.5 - 1511	6.0 - 1440	12 - 1413	12 - 1411	12 - 1393
Dimensions								
Hollow shaft	[mm]	25/30	30/35	40/45	50/55	60/70	70/80	100
Solid shaft	[mm]	25 x 50	30 x 60	40 x 80	50 x 100	60 x 120	80 x 160	100 x 200
Flange	[mm]	160	200	200/250	250/300	350	400/450	450

GKS helical-bevel geared motors

Gearboxes



When combined with our integrated three-phase AC motors and servo motors, our helical-bevel gearboxes form a compact, effective drive unit. Numerous drive-end and output-end options allow precise matching of the drive to your specific application.

Models

- With three-phase AC motors in line with the ErP Directive in the power range from 0.12 to 45 kW
- With servo motors in the power range from 0.25 to 20.3 kW
- As a Drive Package with the decentralised Inverter Drives 8400 motec, covering the power range up to 7.5 kW.

Matched to your environmental conditions

Gearboxes with	Three-phase AC motors	Servo motors
Degree of protection		
EN 60529	IP55	IP54 / IP65
Approvals	cURus, EAC, CCC and UkrSepro	
Climatic conditions		
Storage temperature	-30°C to +60°C	
Operating temperature	-20°C to +40°C	
Surface and corrosion protection		
OKS-G (primed)	1K primer coat	
OKS-S (small)	2K-PUR top coat	
OKS-M (medium)	1K primer coat 2K-PUR top coat	
OKS-L (large)	2K-EP primer coat 2K-PUR top coat	

Lightweight and highly efficient.



Our bevel gearboxes are a showpiece in lightweight engineering. They are also highly efficient and equipped with wear-free teeth.

They are available in a 2-stage version with torque of to 450 Nm and a ratio of up to $i=76$.

Models

- 2-stage gearboxes
- Hollow shaft with keyway or shrink disc
- Solid shaft with feather key
- Foot or flange mounting
- Torque plate, including rubber buffer

Technical data

Gearbox size		GKR03	GKR04	GKR05	GKR06
Max. torque	[Nm]	45	90	240	450
Ratio range		5.4 - 62	5.2 - 61	3.6 - 76	3.4 - 69
Dimensions					
Hollow shaft	[mm]	18/20	20/25	30/35	40/45
Solid shaft	[mm]	20 x 40	20 x 40	30 x 60	35 x 70
Flange	[mm]	110/1200	120/160	160/200	200/250

GKR bevel geared motors

Gearboxes



When combined with our integrated three-phase AC motors and servo motors, bevel gearboxes form a compact, effective drive unit. Numerous drive-end and output-end options allow precise matching of the drive to your specific application.

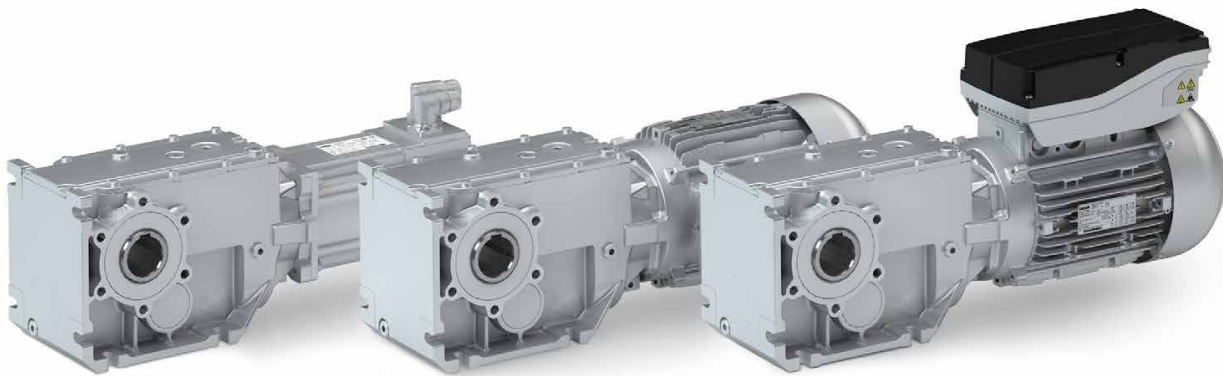
Models

- With three-phase AC motors in line with the ErP Directive in the power range from 0.06 to 7.5 kW
- With servo motors in the power range from 0.25 to 7.1 kW
- As a Drive Package with the decentralised Inverter Drives 8400 motec, covering the power range up to 7.5 kW.

Matched to your environmental conditions

Gearboxes with	Three-phase AC motors	Servo motors
Degree of protection		
EN 60529	IP55	IP54 / IP65
Approvals	cURus, EAC, CCC and UkrSepro	
Climatic conditions		
Storage temperature	-30°C to +60°C	
Operating temperature	-20°C to +40°C	
Surface and corrosion protection		
OKS-G (primed)	1K primer coat	
OKS-S (small)	2K-PUR top coat	
OKS-M (medium)	1K primer coat 2K-PUR top coat	
OKS-L (large)	2K-EP primer coat 2K-PUR top coat	

Efficiency and accuracy in the application.



The efficient bevel gearboxes are characterized by high permissible radial forces, closely stepped transmission ratios and a low backlash.

They are available in a 2-stage, 3-stage and 4-stage design with a torque of up to 20,000 Nm and a ratio of up to $i = 3,600$.

Highlights

- Energy efficiency classes for an economic and future-proof use in many applications and countries
- High-efficient right-angle gearbox in a compact design makes optimal use of mounting space
- Standardized shaft and flange dimensions for easy machine integration
- Low backlash and high torsional stiffness ensure exact positioning task results

Bevel geared motors are a compact, powerful drive unit. Numerous options at the input and output ends ensure that the drive can be easily and precisely adjusted to suit your application.

Types m550 and MF

- With IE2 and IE3 three-phase AC motors according to the ErP Directive: Power range 0.12 ... 55 kW
- With inverter-optimized MF three-phase AC motors: Power range 0.55 ... 22 kW

Types Lenze Smart Motor

- With m300 Lenze Smart Motors: Rated torque of 1.75 Nm and 5 Nm

Types MCS, m850 and MCA

- With synchronous servo motors and asynchronous servo motors: Power range: 0.25 ... 38.4 kW



m550



Lenze Smart Motor



MCS



m850



MCA

Matched to your ambient conditions

Gearboxes with	Three-phase AC motors	Lenze Smart Motor	Servo motors
Degree of protection (EN 60529)	IP55		IP54/IP65
Energy efficiency class	IE2, IE3 or inverter-optimized		
Approvals	cURus, EAC, CCC and UkrSepro		
Storage temperature	-30 ... 60 °C		
Operating temperature	-20 ... 40 °C		

Surface and corrosion protection

Gearboxes with	Three-phase AC motors, Lenze Smart Motors, servo motors
OKS-G (primed)	1K priming coat
OKS-S (small)	2K-PUR top coat
OKS-M (medium)	1K priming coat, 2K-PUR top coat
OKS-L (large)	2K-EP priming coat, 2K-PUR top coat

Technical data

Gearbox size		g500-B45	g500-B110	g500-B240	g500-B450	g500-B600	g500-B820	g500-B1500	g500-B2700	g500-B4300	g500-B8000	g500-B13000	g500-B20000
Rated torque	Nm	45	110	240	450	600	820	1500	2700	4300	8000	13000	20000
Ratio range		5 - 60	5 - 100	4 - 3600	5 - 2500	5 - 2500	5 - 2500	7 - 2500	7 - 2600	5 - 2600	7 - 240	7 - 220	12 - 200
Solid shaft dimensions	mm	20	20	30	30	40	40	50	60	70	90	110	120
		x 40	x 40	x 60	x 60	x 80	x 80	x 100	x 120	x 140	x 170	x 210	x 210
Hollow shaft dimensions	mm	18	20	30	35	40	40	50	60	70	90	100	120
		20	25	35	40	45	45	55	70	80	90	100	120
Shrink disc dimensions	mm	20	20	30 35	35	40	40	50	65	75 80	95	105	125
Flange dimensions	mm	110	120	160	200	200	200	250	350	400	450	550	660
		120	160	200	250	250	250	300	450	450	450	550	660

Robustness and accuracy in the application.



The robust helical gearboxes are characterized by high permissible radial forces, closely stepped transmission ratios and a low backlash.

They are available in a 2-stage, 3-stage and 4-stage design with a torque of up to 14,000 Nm and a ratio of up to $i = 3,700$.

Highlights

- Energy efficiency classes for an economic and future-proof use in many applications and countries
- Finely scaled sizes and torques for optimum machine adaptations
- Standardized shaft and flange dimensions for easy machine integration
- Efficient thanks to a high degree of efficiency of 94% or better

Helical geared motors are a compact, powerful drive unit. Numerous options at the input and output ends ensure that the drive can be easily and precisely adjusted to suit your application.

Types m550 and MF

- With IE2 and IE3 three-phase AC motors according to the ErP Directive: Power range 0.12 ... 55 kW
- With inverter-optimized MF three-phase AC motors: Power range 0.55 ... 22 kW

Types Lenze Smart Motor

- With m300 Lenze Smart Motors: Rated torque of 1.75 Nm and 5 Nm

Types MCS, m850 and MCA

- With synchronous servo motors and asynchronous servo motors: Power range: 0.25 ... 38.4 kW



m550



Lenze Smart Motor



MCS



m850



MCA

Matched to your ambient conditions

Gearboxes with	Three-phase AC motors	Lenze Smart Motor	Servo motors
Degree of protection (EN 60529)	IP55		IP54/IP65
Energy efficiency class	IE2, IE3 or inverter-optimized		
Approvals	cURus, EAC, CCC and UkrSepro		
Storage temperature	-30 ... 60 °C		
Operating temperature	-20 ... 40 °C		

Surface and corrosion protection

Gearboxes with	Three-phase AC motors, Lenze Smart Motors, servo motors
OKS-G (primed)	1K priming coat
OKS-S (small)	2K-PUR top coat
OKS-M (medium)	1K priming coat, 2K-PUR top coat
OKS-L (large)	2K-EP priming coat, 2K-PUR top coat

Technical data

Gearbox size		g500-H45	g500-H100	g500-H140	g500-H210	g500-H320	g500-H450	g500-H600	g500-H850	g500-H1500	g500-H3000	g500-H5000	g500-H8000	g500-H14000
Rated torque	Nm	45	100	140	210	320	450	600	850	1,500	3,000	5,000	8,000	13,000
Ratio range		3 - 60	3 - 600	3 - 750	3 - 2,900	3 - 3,200	3 - 3,700	3 - 2,500	3 - 2,300	4 - 3,100	4 - 2,800	5 - 370	4 - 330	5 - 330
Solid shaft dimensions	mm	14 x 28 20 x 40	20 x 40	25 x 50	25 x 50	30 x 60	30 x 60 35 x 70	35 x 70 40 x 80	40 x 80	50 x 100	60 x 120	70 x 140	90 x 170	110 x 210
Flange dimensions	mm	120 140 160	120 140 160	120 140 160	120 140 160 200	160 200	160 200 250	200 250	250 300	250 300 350	300 350 450	350 450	450 550	450 550

Robust and precise in application.



The robust helical gearboxes excel through their high permissible radial forces, finely graduated speed-reduction ratios and low backlash.

They are available in 1-stage, 2-stage and 3-stage versions with torque of to 5,920 Nm and a ratio of up to $i=435$.

Models

- 1-stage, 2-stage and 3-stage gearboxes
- Solid shaft with keyway
- Foot or flange mounting

Technical data

Gearbox size		GST03	GST04	GST05	GST06	GST07	GST09	GST11	GST14
Max. torque	[Nm]	45	73	172	375	710	1623	2848	5920
Ratio range		2.6 - 59	1.6 - 45	1.6 - 335	2 - 435	2 - 417	2 - 412	4 - 412	4 - 412
Dimensions									
Solid shaft	[mm]	14 x 28 20 x 40	16 x 32 20 x 40	20 x 40 25 x 50	25 x 50 30 x 60	30 x 60 40 x 80	40 x 80 50 x 100	60 x 120	80 x 160
Flange	[mm]	120 140 160	120 140 160	120 140 160 200	160 200	200 250	250 300	300 350	350 400

GST helical geared motors

Gearboxes



When combined with three-phase AC motors and servo motors, our helical gearboxes form a compact yet powerful drive unit. Numerous drive-end and output-end options allow precise matching of the drive to your specific application.

Models

- With three-phase AC motors in line with the ErP Directive in the power range from 0.06 to 45 kW
- With servo motors in the power range from 0.25 to 20.3 kW
- As a Drive Package with the decentralised Inverter Drives 8400 motec, covering the power range up to 7.5 kW.

Matched to your environmental conditions

Gearboxes with	Three-phase AC motors	Servo motors
Degree of protection		
EN 60529	IP55	IP54 / IP65
Approvals	cURus, EAC, CCC and UkrSepro	
Climatic conditions		
Storage temperature	-30°C to +60°C	
Operating temperature	-20°C to +40°C	
Surface and corrosion protection		
OKS-G (primed)	1K primer coat	
OKS-S (small)	2K-PUR top coat	
OKS-M (medium)	1K primer coat 2K-PUR top coat	
OKS-L (large)	2K-EP primer coat 2K-PUR top coat	

Greater precision and flexibility.



The g7x0 planetary gearboxes and bevel planetary gearboxes as well as the low-backlash g8x0 extend the range of mechanical drives with high-quality servo drives.

The g7x0 gearboxes are die economic solution for many servo applications. They are characterized by a good price/performance ratio as well as a complete portfolio in combination with the Lenze servo motors.

The g8x0 offer the highest performance and precision. The already very low backlash can optionally be further reduced. The portfolio offers other variants for universal use with precise requirements, with degree of protection IP65.

Highlights

- Highest mounting flexibility
- Maintenance-free lifetime lubrication for any mounting position
- Degree of protection IP54 and IP65 for universal use, even in rough environments
- Robust planetary gearboxes and bevel planetary gearboxes with output flange, solid shaft or hollow shaft
- High torque range and wide ratio range for highly efficient drive solutions

g7x0-P planetary gearboxes



g700-P

- Basic gearboxes
- Good price/performance ratio
- Continuous high speeds



g720-P

- Reinforced deep-groove ball bearing
- Flange on at the output end
- High ratio range



g730-P

- Reinforced deep-groove ball bearing
- Reinforced housing



g750-P

- Robust position controller
- Protection against dust and water jets
- Degree of protection IP65



g780-P

- Flange driven shaft
- Very torsionally stiff
- Compact

g7x0-B bevel planetary gearboxes

Standard gearboxes



g700-B

- Basic gearboxes
- Good price/performance ratio
- Continuous high speeds



g720-B

- Reinforced deep-groove ball bearing
- Flange on at the output end
- High ratio range



g730-B

- Reinforced deep-groove ball bearing
- Reinforced housing



g780-B

- Flange driven shaft
- Very torsionally stiff
- Compact

g8x0-P planetary gearboxes



g820-P

- Basic gearboxes
- Low noise generation
- High input speed possible



g840-P

- Very high rated torque
- Robust position controller
- Very low backlash



g850-P

- Low noise generation
- Robust position controller
- Very low backlash



g870-P

- Very compact
- Highest bearing forces
- Extremely torsionally stiff



g880-P

- Very compact
- Low noise generation
- Extremely torsionally stiff

g8x0-B bevel planetary gearboxes

Precision gearboxes



g850-B

- Spiral toothed
- 2-stage gearboxes additionally with planetary stages
- Very low backlash



g860-B

- Spiral toothed
- Hollow shaft version with shrink disc
- Very low backlash



g880-B

- Spiral toothed
- 2-stage gearboxes additionally with planetary stages
- Flange driven shaft

When used in combination with the MCS and m850 synchronous servo motors or the MCA and SDSGA asynchronous servo motors, our planetary gearboxes and bevel planetary gearboxes form a compact, powerful drive unit. Numerous options at the input and output ends ensure that the drive can be easily and precisely adjusted to suit your application.

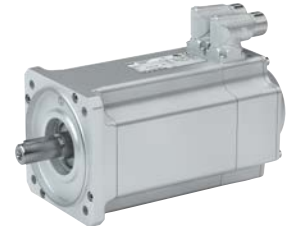
Types

- With MCS: Power range 0.33 ... 21.18 hp (0.25 ... 15.80 kW)
- With m850: Power range 2.68 ... 12.34 hp (2.00 ... 9.20 kW)
- With MCA: Power range 1.07 ... 72.15 hp (0.80 ... 53.80 kW)
- With SDSGA: Power range 0.10 ... 0.80 hp (0.08 ... 0.60 kW)

The EASY Product Finder helps you to find the right product.



MCS



m850



MCA



SDSGA

Technical data

Planetary gearboxes and planetary geared motors

Rated data		g700-P	g720-P	g730-P	g750-P	g780-P
Possible combinations		MCA, MCS, m850, SDSGA				
Rated torque	Nm	5 ... 800	15 ... 260	5 ... 460	15 ... 260	15 ... 260
	lb-in	44 ... 7080	132 ... 2300	44 ... 4070	132 ... 2300	132 ... 2300
Backlash	arcmin	6 ... 22	7 ... 15	7 ... 19	7 ... 12	7 ... 12
Static radial force	N	200 ... 5000	1500 ... 4000	1300 ... 8400	3200 ... 6000	900 ... 3800
Static axial force	N	240 ... 11000	1950 ... 3800	1000 ... 11000	4400 ... 8000	1200 ... 5200

Rated data		g820-P	g840-P	g850-P	g870-P	g880-P
Possible combinations		MCA, MCS, m850				
Rated torque	Nm	28 ... 470	27 ... 1800	28 ... 950	27 ... 1800	28 ... 950
	lb-in	247 ... 4160	239 ... 15930	247 ... 8408	239 ... 16930	247 ... 8408
Backlash	arcmin	1 ... 5	1 ... 5	1 ... 5	1 ... 5	1 ... 5
Static radial force	N	1600 ... 9500	3200 ... 21000	3200 ... 20000	2400 ... 33000	2400 ... 23000
Static axial force	N	1500 ... 9600	4400 ... 21000	4400 ... 19000	4300 ... 15000	4300 ... 16000

Bevel planetary gearboxes and Bevel planetary geared motors

Rated data		g700-B	g720-B	g730-B	g780-B
Possible combinations		MCA, MCS, m850, SDSGA			
Rated torque	Nm	5 ... 260	14 ... 260	5 ... 195	14 ... 260
	lb-in	44 ... 2300	124 ... 2300	44 ... 1725	124 ... 2300
Backlash	arcmin	11 ... 28	11 ... 21	11 ... 25	11 ... 18
Static radial force	N	200 ... 2000	1500 ... 4000	1300 ... 4000	900 ... 3800
Static axial force	N	240 ... 3800	1950 ... 3800	1000 ... 5900	1200 ... 5200

Rated data		g850-B	g860-B	g880-B
Possible combinations		MCA, MCS, m850		
Rated torque	Nm	22 ... 800	22 ... 320	22 ... 625
	lb-in	194 ... 7080	194 ... 2830	194 ... 5530
Backlash	arcmin	3 ... 5	5	3 ... 5
Static radial force	N	3200 ... 12500	2700 ... 10000	2400 ... 12000
Static axial force	N	4300 ... 15000	4300 ... 14500	4200 ... 9500

Quiet operations.



Helical worm gearboxes are particularly low-noise drive components.

The helical worm gearboxes are available as 2-stage and 3-stage versions and can reach a torque of up to 1,250 Nm and a ratio of up to $i=1847$.

Models

- 2-stage and 3-stage gearboxes
- Hollow shaft with keyway or shrink disc
- Solid shaft with feather key
- Foot or flange mounting
- Torque plate, including rubber buffer

Technical data

Gearbox size		GSS04	GSS05	GSS06	GSS07
Max. torque	[Nm]	180	360	720	1250
Ratio range		5.7 - 208	5.7 - 1176	5.8 - 1847	5.9 - 1772
Dimensions					
Hollow shaft	[mm]	25/30	30/35	40/45	50/55
Solid shaft	[mm]	25 x 50	30 x 60	40 x 80	50 x 100
Flange	[mm]	160	200	200/250	250/300

GSS Helical-worm geared motors

Gearboxes



When combined with our integrated three-phase AC motors and servo motors, our helical-worm geared motors form a compact, effective drive unit. Numerous drive-end and output-end options allow precise matching of the drive to your specific application.

Models

- With three-phase AC motors in line with the ErP Directive in the power range from 0.12 to 15 kW
- With servo motors in the power range from 0.25 to 11.3 kW
- As a Drive Package with the decentralised Inverter Drives 8400 motec, covering the power range up to 7.5 kW.

Matched to your environmental conditions

Gearboxes with	Three-phase AC motors	Servo motors
Degree of protection		
EN 60529	IP55	IP54 / IP65
Approvals	cURus, EAC, CCC and UkrSepro	
Climatic conditions		
Storage temperature	-30°C to +60°C	
Operating temperature	-20°C to +40°C	
Surface and corrosion protection		
OKS-G (primed)	1K primer coat	
OKS-S (small)	2K-PUR top coat	
OKS-M (medium)	1K primer coat 2K-PUR top coat	
OKS-L (large)	2K-EP primer coat 2K-PUR top coat	