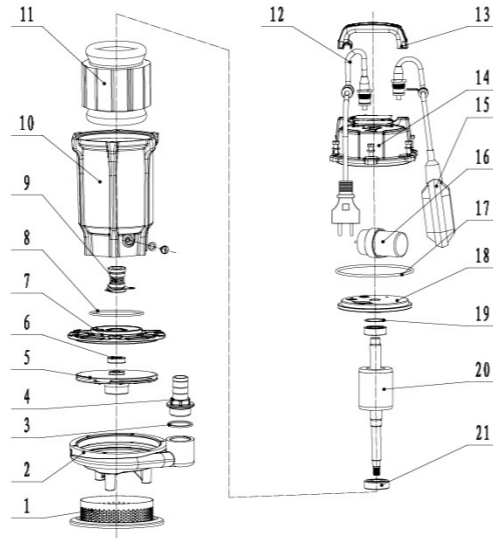
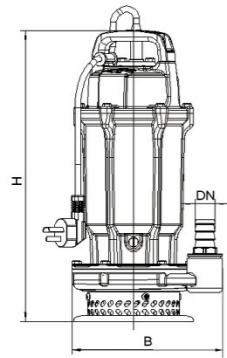


Materials Table

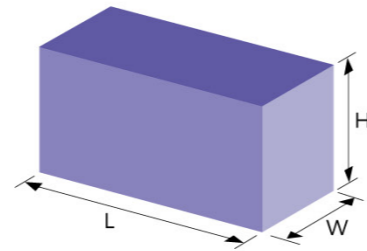
No.	Part	Material	No.	Part	Material
1	Filter	Stainless steel	14	Top cover	HT200
2	Pump body	HT200	15	Float switch	
3	O-Ring	NBR	16	Capacitor	
4	Outlet connector	HT200	17	O-Ring	NBR
*5	Impeller	PPO/HT200	18	End cover	HT200
6	Oil seal		19	Wave spring pad	
7	Cover of cylinder	HT200	20	Rotor	
8	O-Ring	NBR	21	Bearing	
9	Mechanical seal	Upper: Ceramic/Carbon Lower: Sic/Carbon	*HT200 for QDX25-6-0.75A and QDX40-5.5-1.1A		
10	Motor casing	HT200			
11	Stator				
12	Cable assembly				
13	Handle	PP			



Dimension



Package Information



Model	Outlet	Connector				H (mm)	B (mm)
		Standard	Optional	Hose	Hose		
QDX1.5-12-0.25A	G1	25	/	25	G3/4	195	145
QDX1.5-15-0.37A	G1	25	/	25	G3/4	195	145
QDX1.5-25-0.55A	G1	25	/	25	G3/4	245	195
QDX3-18-0.55A	G1	25	/	25	G3/4	205	160
QDX10-10-0.55A	G1.5	40	/	40	G1	215	150
QDX15-7-0.55A	G2	50	/	50	G1.5	240	170
Q(D)X1.5-32-0.75(A)	G1	25	/	25	G3/4	245	195
Q(D)X6-18-0.75(A)	G1.5	40	/	40	G1	220	160
Q(D)X10-16-0.75(A)	G1.5	50	/	50	G1.5	220	160
Q(D)X15-10-0.75(A)	G2	65	/	65	G2	240	170
Q(D)X25-6-0.75(A)	G2.5	80	/	80	G2.5	250	160
Q(D)X10-18-1.1(A)	G1.5	50	/	50	G1.5	270	190
Q(D)X15-14-1.1(A)	/	65	/	65	G2	270	180
Q(D)X40-6-1.1(A)	/	80	/	80	G2.5	270	195
QDX40-9-1.5	/	80	G2.5	/	/	520	319
QX40-9-1.5	/	80	G2.5	/	/	488	319
QDX50-7-1.5	/	80	G2.5	/	/	520	319
QX50-7-1.5	/	100	G3.5	/	/	488	319
QX50-10-2.2	/	100	G3.5	/	/	492	319
QX65-8-2.2	/	100	G3.5	/	/	492	319

Model	GW (Kgs)	L (mm)	W (mm)	H (mm)	Quantity (PCS/20'TEU)
QDX1.5-12-0.25A	11.5	392	224	180	1788
QDX1.5-15-0.37A	11.5	392	224	190	1788
QDX1.5-25-0.55A	16	435	250	235	1062
QDX3-18-0.55A	14.5	415	230	205	1388
QDX10-10-0.55A	14.5	415	230	205	1388
QDX15-7-0.55A	15.5	420	280	215	1132
Q(D)X1.5-32-0.75(A)	16.5	435	250	235	1062
Q(D)X6-18-0.75(A)	15.5	415	230	205	1388
Q(D)X10-16-0.75(A)	15.5	415	230	205	1388
Q(D)X15-10-0.75(A)	16.5	420	280	215	1132
Q(D)X25-6-0.75(A)	17.5	420	280	215	1132
Q(D)X10-18-1.1(A)	22	452	300	240	855
Q(D)X15-14-1.1(A)	22	452	300	240	855
Q(D)X40-6-1.1(A)	22.5	490	295	235	792
QDX40-9-1.5	31	560	370	290	420
QX40-9-1.5	26	560	370	290	420
QDX50-7-1.5	31	560	370	290	420
QX50-7-1.5	26	560	370	290	420
QX50-10-2.2	31	560	370	290	420
QX65-8-2.2	31	560	370	290	420

Application

- Rural wells water pumping
- Farming irrigation and drainage
- Garden watering and family households
- Construction, aquaculture, fish ponds, ect.

Features

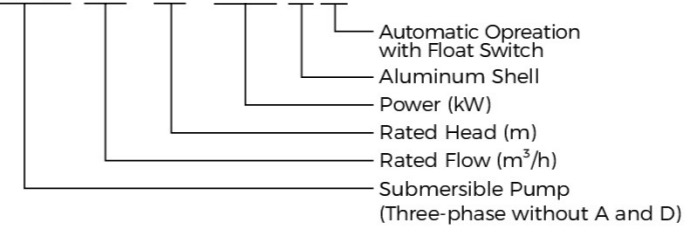
- Cast iron pump body, aluminum motor casing
- Copper winding
- Built-in thermal protector
- Stainless steel shaft
- Double-end Mechanical seal
- Stainless steel filter

Pump

- Max. immersion depth: 5 m
- Max. liquid temperature: +40°C
- Liquid PH level from 6.5 - 8
- Maximum sand content is 0.1%. passage of suspended solids up to 0.2mm.
- Insulation class: F
- Ingress protection: IP68

Identification Codes

Q(D)X 1.5 - 17 - 0.37 L A

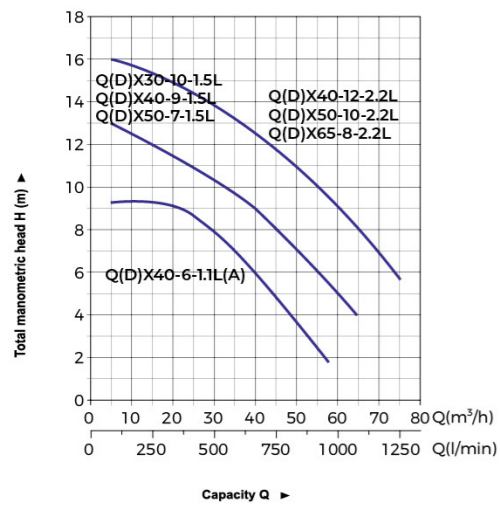
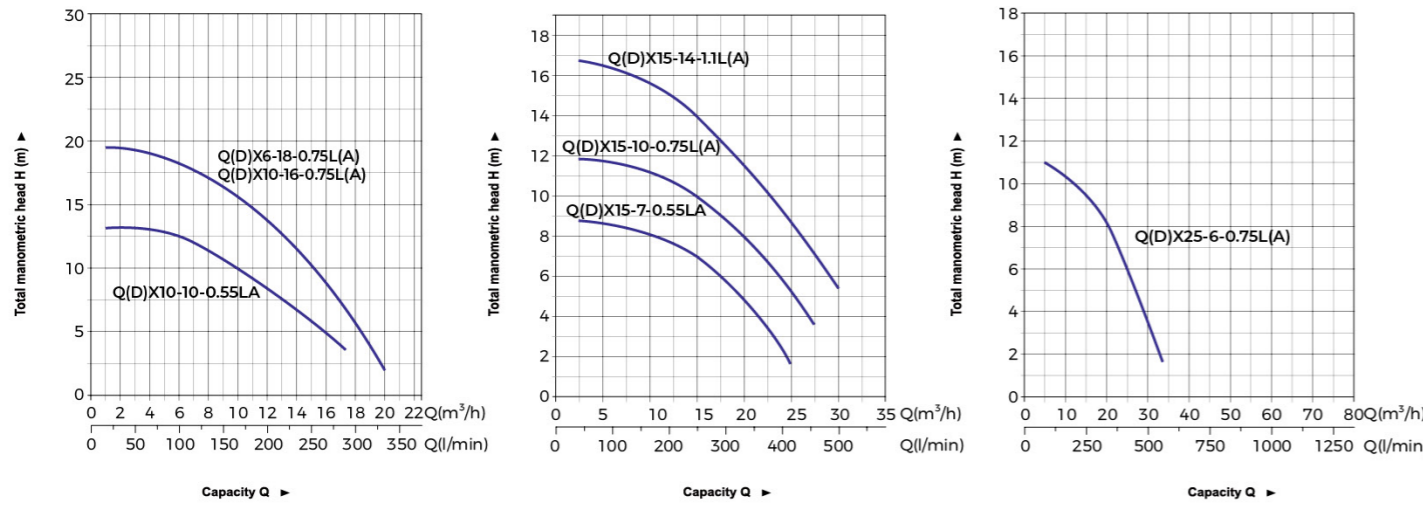
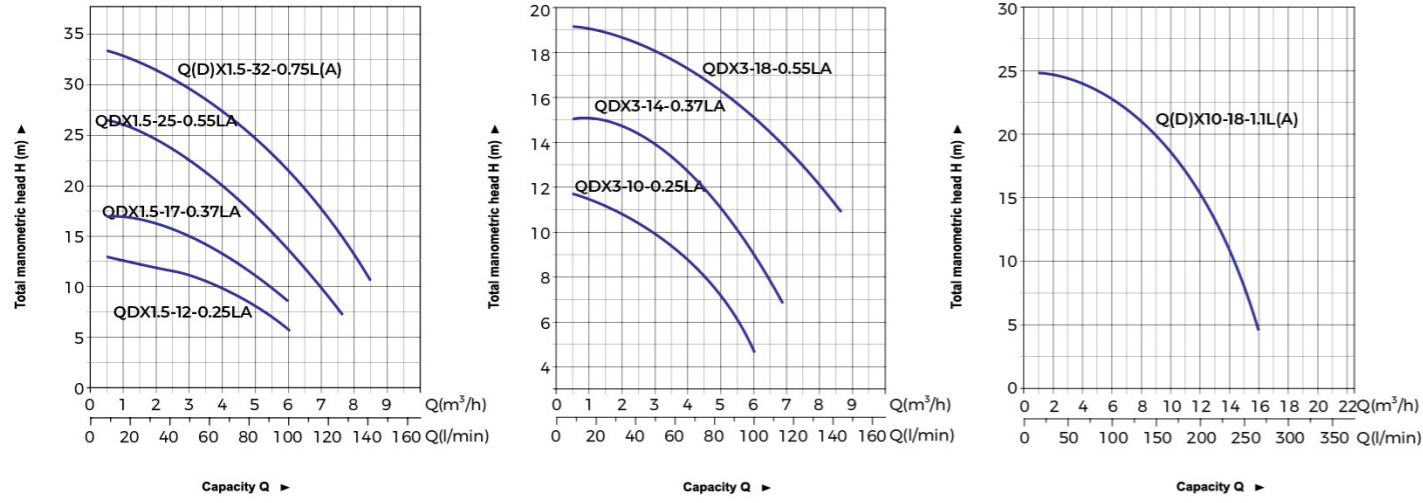


Technical Data

Model	Q(m³/h)	Q(l/min)												
		0	0.5	1	1.5	2	2.5	3	4	5	6	7	8	9
QDX1.5-12-0.25LA	H (m)	13	12.7	12.3	12	11.8	11.4	11	9.5	8.3	5.5	-	-	-
QDX1.5-17-0.37LA		17.2	17	16.9	16.8	16.2	15.6	15	13.4	11.2	8.8	-	-	-
QDX1.5-25-0.55LA		26.5	26.2	25.5	25	24.5	23	22.5	20	16	13	10	-	-
Q(D)X1.5-32-0.75L(A)		33.5	33.2	32.5	32	31	30.3	29.5	27.5	25	21	17.5	13	-
QDX3-10-0.25LA		13	-	12.3	-	11.8	-	11	9.5	8.3	5.5	-	-	-
QDX3-14-0.37LA		16	-	15.4	-	14.9	-	14	12.5	11	9.5	7	-	-
QDX3-18-0.55LA		19.4	-	19.1	-	18.6	-	18	17.3	16.3	15	13.6	12	10
QDX10-10-0.55LA		H (m)	13.2	13.2	13.3	12.7	11.8	10	8.2	7	5	-	-	-
Q(D)X6-18-0.75L(A)			19.5	19.4	18.8	18	17.7	16	14.2	11.3	8.5	5.5	2	-
Q(D)X10-16-0.75L(A)			19.5	19.4	18.8	18	17.7	16	14.2	11.3	8.5	5.5	2	-
Q(D)X10-18-1.1L(A)	25		24.5	26.2	23	21.5	18	15.5	11	4.5	-	-	-	
QDX15-7-0.55LA	H (m)	8.7	8.6	8.2	7	4.9	1.7	-	-	-	-	-	-	
Q(D)X15-10-0.75L(A)		12.1	11.7	11.2	10	7.9	5.3	-	-	-	-	-	-	
Q(D)X15-14-1.1L(A)		16.6	16.5	15.7	14	11.6	8.7	5.5	-	-	-	-	-	
Q(D)X25-6-0.75L(A)		11.8	11	10.3	9.6	8.3	6	3.5	-	-	-	-	-	
Q(D)X30-10-1.5		13.3	13	12.5	12	11.4	10.9	10.5	9.7	9	8	7	6.2	5.1
Q(D)X40-6-1.1L(A)		9.5	9.3	9.2	9.2	9.1	8.6	8	7.1	6	4.8	3.8	2.5	-
Q(D)X40-9-1.5L		13.3	13	12.5	12	11.4	10.9	10.5	9.7	9	8	7	6.2	5.1
Q(D)X40-12-2.2L		16.5	16	15.7	15.4	14.9	14.5	14	13.4	12.7	11.7	11	10.2	9
Q(D)X50-7-1.5L		13.3	13	12.5	12	11.4	10.9	10.5	9.7	9	8	7	6.2	5.1
Q(D)X50-10-2.2L		16.5	16	15.7	15.4	14.9	14.5	14	13.4	12.7	11.7	11	10.2	9
Q(D)X65-8-2.2L	16.5	16	15.7	15.4	14.9	14.5	14	13.4	12.7	11.7	11	10.2	9	

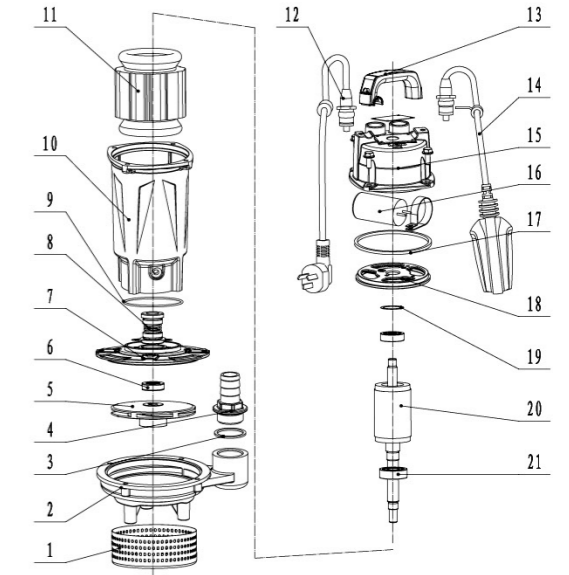


Hydraulic Performance Curves

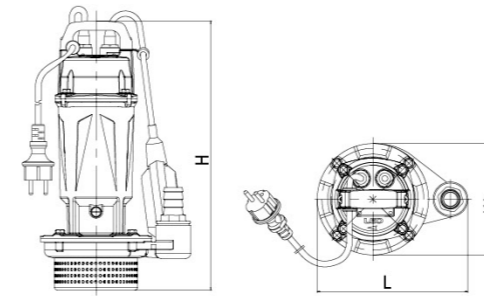


Materials Table

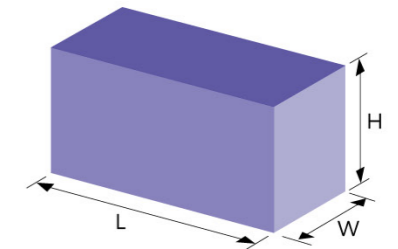
No.	Part	Material	No.	Part	Material
1	Filter	stainless steel	14	Float switch	
2	Pump body	HT200	15	Top cover	ADC12
3	O-Ring	NBR	16	Capacitor	
4	Outlet connector	HT200	17	O-Ring	NBR
5	Impeller	PPO	18	End cover	ADC12
6	Oil seal		19	Wave spring pad	
7	Cover of cylinder	ADC12(0.25/0.37kW) HT200(0.55/0.75kW)	20	Rotor	
8	Mechanical seal		21	Bearing	
9	O-Ring	NBR			
10	Motor casing	ADC12			
11	Stator				
12	Cable assembly				
13	Handle	PP			



Dimension



Package Information



Model	Outlet	Connector				L (mm)	W (mm)	H (mm)
		Standard		Optional				
		External thread tube	Hose	Internal thread tube	Hose			
QDX1.5-12-0.25LA	G1	25	/	25	G3/4	195	144	348
QDX1.5-17-0.37LA	G1	25	/	25	G3/4	195	144	348
QDX1.5-25-0.55LA	G1	25	/	25	G3/4	245	194	382
Q(D)X1.5-32-0.75L(A)	G1	25	/	25	G3/4	245	194	382
QDX3-10-0.25LA	G1	25	/	25	G3/4	195	144	348
QDX3-14-0.37LA	G1	25	/	25	G3/4	195	144	348
QDX3-18-0.55LA	G1	25	/	25	G3/4	205	159	375
QDX10-10-0.55LA	G1.5	40	/	40	G1	213	152	374
Q(D)X6-18-0.75L(A)	G1.5	40	/	40	G1	221	159	379
QDX15-7-0.55LA	G2	50	/	50	G1.5	237	160	393
Q(D)X10-16-0.75L(A)	G1.5	50	/	50	G1.5	221	159	372
Q(D)X15-10-0.75L(A)	G2	50	/	50	G2	237	166.5	393
Q(D)X10-18-1.1L(A)	G2	50	/	50	G1.5	271	190	425
Q(D)X15-14-1.1L(A)	/	65	/	65	G2	267	182	426
Q(D)X25-6-0.75L(A)	/	80	/	80	G2.5	248	162	392
Q(D)X40-6-1.1L(A)	/	80	/	80	G2.5	268	194	452
QDX30-10-1.5L	/	65	G2	/	/	319	218	510
QX30-10-1.5L	/	65	G2	/	/	319	218	480
QDX40-9-1.5L	/	80	G2.5	/	/	319	218	510
QX40-9-1.5L	/	80	G2.5	/	/	319	218	480
QDX40-12-2.2L	/	65	G2	/	/	319	218	510
QX40-12-2.2L	/	65	G2	/	/	319	218	480
Q(D)X50-10-2.2L	/	80	G2.5	/	/	319	218	510
QDX50-7-1.5L	/	100	G3.5	/	/	319	218	510
QX50-7-1.5L	/	100	G3.5	/	/	319	218	480
Q(D)X65-8-2.2L	/	100	G3.5	/	/	319	218	510

Model	GW(Kgs)		L (mm)	W (mm)	H (mm)	Quantity (PCS/20*TEU)
	QDX	QX				
QDX1.5-12-0.25LA	6.8	-	392	224	180	1788
QDX1.5-17-0.37LA	7.8	-	392	224	180	1788
QDX1.5-25-0.55LA	11.5	-	435	250	235	1062
Q(D)X1.5-32-0.75L(A)	12.5	12	435	250	235	1062
QDX3-10-0.25LA	6.8	-	392	224	180	1788
QDX3-14-0.37LA	7.8	-	392	224	180	1788
QDX3-18-0.55LA	10.2	-	415	230	205	1388
QDX10-10-0.55LA	10.5	-	415	230	205	1388
Q(D)X6-18-0.75L(A)	11.5	11	415	230	205	1388
QDX15-7-0.55LA	11	-	420	280	215	1132
Q(D)X10-16-0.75L(A)	11.5	11	415	230	205	1388
Q(D)X15-10-0.75L(A)	13	12.5	420	280	215	1132
Q(D)X10-18-1.1L(A)	15	14	452	300	240	855
Q(D)X15-14-1.1L(A)	15	14	452	300	240	855
Q(D)X25-6-0.75L(A)	13	12	420	280	215	1132
Q(D)X30-10-1.5L	23.5	20.5	560	370	290	420
Q(D)X40-6-1.1L(A)	17	16	490	295	235	792
Q(D)X40-9-1.5L	23.5	20.5	560	370	290	420
Q(D)X40-12-2.2L	25	23.5	560	370	290	420
Q(D)X50-10-2.2L	25	23.5	560	370	290	420
Q(D)X50-7-1.5L	23.5	20.5	560	370	290	420
Q(D)X65-8-1.5L	25	23.5	560	370	290	420