

Differential pressure gauge Model: DP1

Applications

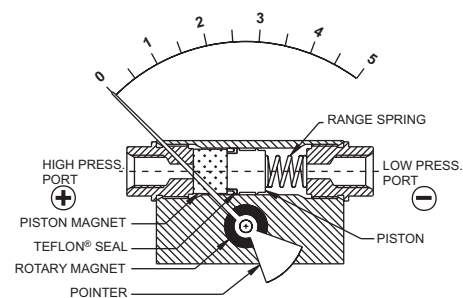
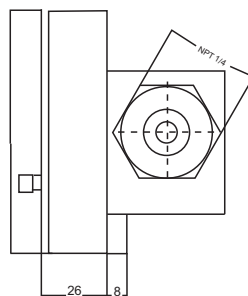
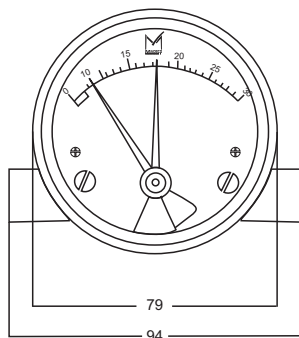
- Filtration Monitoring
- Flow Measurement
- Leak detection
- Tank Level Measurement

Special features

- 1 year warranty
- Static pressure capability (1,500 psi)
- Ranges from 1 psi to 150 psi
- Superior magnets for smoother pointer motion
- Small convoluted diaphragm actuator

Description

- | | |
|-------------------------------|---|
| ■ Accuracy | 3% ascending pressure full scale differential |
| ■ Dial Sizes | 2½", 3½", 4", 4½", 6" |
| ■ Ranges | 0-150psi |
| ■ Process Connection Location | Bottom, back, in-line |
| ■ Process Connection Sizes | ¼ NPT Female |
| ■ Migration | None; Zero leakage from high to low port |
| ■ Process Temperature | 175° F (80° C) -40 - 70 |
| ■ Body material | Aluminium body |
| ■ Red pointer follower | Indicates the historic maximum differential pressure (resettable) |
| ■ Mounting | Direct |
| ■ Window | Acrylic, glass, hard glass |
| ■ Wetted parts | 316L stainless steel |
| ■ Maximum Static Pressure | 3625 psi |
| ■ Environ protection | IP 54 |



High port is always on the left hand side.

MODEL : DP1 Piston



DP1 Differential pressure gauge

ORDERING CODE	Example:	DP1	3	L	2	G	S	A	A	V	AT	WA	Note
Dial Size/Model Code			3										
3 - 80mm(3")													
4 - 100mm(4")													
5 - 125mm(5")													
Process Connection Type													
L - In - line (std)				L									
B - Back													
T - Bottom													
Process Connection Sizes													
2 - ¼ NPT					2								
4 - ¼ G													
6 - Customer													
Function													
G - Gauge						G							
S - Switch													
W - Gauge + Switch													
Piston and Process Connection Material													
S - 316L Stainless steel							S						
M - Monel® 400													
H - Hastelloy													
C - Customer													
Window													
G - Glass													
A - Acrylic								A					
H - Hard Glass													
Body Material													
A - Alminum (anodized)									A				
B - Brass													
316 St. Steel													
Seals													
B - Buna													
V - Viton										V			
E - EPDM													
Accuracy													
AT - 3% (std.)											AT		
AC - 2%													
Options													
SC - Single scale													
DS - Dual scales													
FS - Flow measurement dial													
OS - Overload stop													
GF - Glycerine filling													
QC - Low temperature silicone fill for ambient temperature down to -94°F (-70°C), including Flourosilicone sealing													
SH - Red set hand, stationary (dry case only)													
CC - Calibration certificate													
NH - Stainless steel tag wired to case													
AT - ATEX													
WA - One year warranty												WA	
Other													





Address: 7191 Yonge street, Toronto, Canada

Tel: +16472221281(5 line)

Web: www.madecotech.com

Email: Info@madecotech.com