

## Differential pressure gauge Model: DP3

### Applications

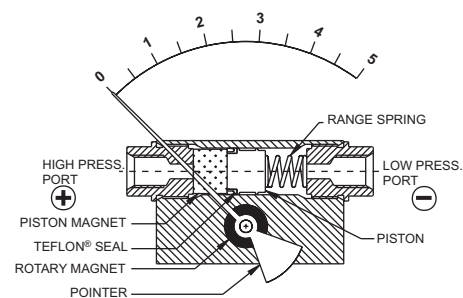
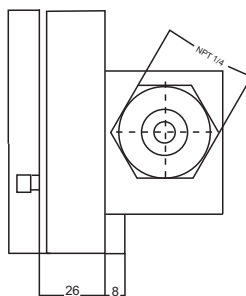
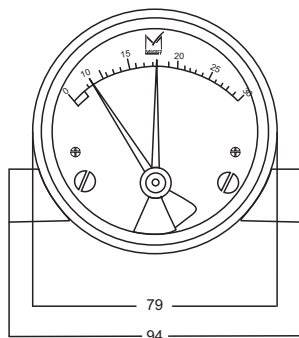
- Filtration Monitoring
- Flow Measurement
- Leak detection
- Tank Level Measurement

### Special features

- 1 year warranty
- Static pressure capability (1,500 psi)
- Ranges from 1 psi to 150 psi
- Superior magnets for smoother pointer motion
- Small convoluted diaphragm actuator

### Description

- |                               |   |
|-------------------------------|---|
| ■ Accuracy                    | 3% ascending pressure full scale differential                     |
| ■ Dial Sizes                  | 2 1/2", 3 1/2", 4", 4 1/2", 6"                                    |
| ■ Ranges                      | 0-150psi  |
| ■ Process Connection Location | Bottom, back, in-line   |
| ■ Process Connection Sizes    | 1/4 NPT Female  |
| ■ Migration                   | None; Zero leakage from high to low port                          |
| ■ Process Temperature         | 175° F (80° C) -40 - 70   |
| ■ Body material               | Stainless steel body  |
| ■ Red pointer follower        | Indicates the historic maximum differential pressure (resettable) |
| ■ Mounting                    | Direct  |
| ■ Window                      | Acrylic, glass, hard glass, safety glass                          |
| ■ Wetted parts                | 316L stainless steel  |
| ■ Maximum Static Pressure     | 3625 psi  |
| ■ Environ protection          | IP 65   |



MODEL : DP3 Piston



**DP3 Differential pressure gauge**

ORDERING CODE	Example:	DP3	3	L	2	G	S	A	A	V	AT	WA	Note
Dial Size/Model Code			3										
3 - 80mm(3")													
4 - 100mm(4")													
5 - 125mm(5")													
Process Connection Type													
L - In - line (std)				L									
B - Back													
T - Bottom													
Process Connection Sizes													
2 - ¼NPT					2								
4 - ¼ G													
6 - Customer													
Function													
G - Gauge						G							
S - Switch													
W - Gauge + Switch													
Piston and Process Connection Material													
S - 316L Stainless steel							S						
M - Monel® 400													
H - Hastelloy													
C - Customer													
Window													
S - Safety glass													
A - Acrylic								A					
H - Hard glass													
Body Material													
A - Alminum (anodized)									A				
B - Brass													
S - 316 St. Steel													
Seals													
B - Buna													
V - Viton										V			
E - EPDM													
Accuracy													
AT - 3% (std.)											AT		
AC - 2%													
Options													
SC - Single scale													
DS - Dual scales													
FS - Flow measurement dial													
OS - Overload stop													
GF - Glycerine filling													
QC - Low temperature silicone fill for ambient temperature down to -94°F (-70°C), including Flourosilicone sealing													
SH - Red set hand, stationary (dry case only)													
CC - Calibration certificate													
NH - Stainless steel tag wired to case													
AT - ATEX													
WA - One year warranty												WA	
Other													





Address: 7191 Yonge street, Toronto, Canada

Tel: +16472221281(5 line)

Web: [www.madecotech.com](http://www.madecotech.com)

Email: [Info@madecotech.com](mailto:Info@madecotech.com)