



3P Power Contactor AC3:22A 1NO AC230V 50Hz Main circuit: Screw Auxiliary circuit: Screw

product brand name	SINOVA
product designation	Power contactor
General technical data	
size of contactor	1
product extension auxiliary switch	Yes
power loss [W] for rated value of the current	
• at AC in hot operating state	9.3 W
• at AC in hot operating state per pole	3.1 W
insulation voltage	
• of main circuit with degree of pollution 3 rated value	1 000 V
• of auxiliary circuit with degree of pollution 3 rated value	1 000 V
surge voltage resistance	
• of main circuit rated value	6 kV
• of auxiliary circuit rated value	6 kV
protection class IP	
• on the front	IP20
mechanical service life (operating cycles)	
• of contactor typical	10 000 000
reference code according to IEC 81346-2	Q
Substance Prohibitance (Date)	07/01/2022
Net Weight	0.347 kg
Ambient conditions	
installation altitude at height above sea level maximum	2 000 m
ambient temperature	
• during operation	-5 ... +55 °C
• during storage	-25 ... +70 °C
relative humidity minimum	10 %
relative humidity at 55 °C according to IEC 60068-2-30 maximum	95 %
Main circuit	
number of poles for main current circuit	3
number of NO contacts for main contacts	3
operating voltage at AC-3 rated value maximum	690 V
operational current	
• at AC-1 at 400 V at ambient temperature 40 °C rated value	32 A
• at AC-1 up to 690 V	
— at ambient temperature 40 °C rated value	32 A
— at ambient temperature 60 °C rated value	25 A

<ul style="list-style-type: none"> <li>at AC-3 <ul style="list-style-type: none"> <li>at 400 V rated value</li> <li>at 690 V rated value</li> </ul> </li> </ul>	22 A 12.8 A
<b>operating power</b> <ul style="list-style-type: none"> <li>at AC-3 <ul style="list-style-type: none"> <li>at 400 V rated value</li> <li>at 690 V rated value</li> </ul> </li> </ul>	11 kW 11 kW
<b>no-load switching frequency</b> <ul style="list-style-type: none"> <li>at AC</li> </ul>	1 800 1/h
<b>operating frequency</b> <ul style="list-style-type: none"> <li>at AC-1 maximum</li> <li>at AC-3 maximum</li> </ul>	600 1/h 750 1/h
<b>Control circuit/ Control</b>	
<b>type of voltage of the control supply voltage</b>	AC
<b>control supply voltage at AC</b> <ul style="list-style-type: none"> <li>at 50 Hz rated value</li> </ul>	230 V
<b>operating range factor control supply voltage rated value of magnet coil at AC</b> <ul style="list-style-type: none"> <li>at 50 Hz</li> </ul>	0.85 ... 1.1
<b>apparent pick-up power of magnet coil at AC</b> <ul style="list-style-type: none"> <li>at 50 Hz</li> </ul>	70 VA
<b>inductive power factor with closing power of the coil</b> <ul style="list-style-type: none"> <li>at 50 Hz</li> </ul>	0.75
<b>apparent holding power of magnet coil at AC</b> <ul style="list-style-type: none"> <li>at 50 Hz</li> </ul>	11 VA
<b>inductive power factor with the holding power of the coil</b> <ul style="list-style-type: none"> <li>at 50 Hz</li> <li>at 60 Hz</li> </ul>	0.3 0.3
closing delay at AC	9 ... 25 ms
opening delay at AC	4 ... 15 ms
<b>Auxiliary circuit</b>	
<b>number of NO contacts for auxiliary contacts</b> <ul style="list-style-type: none"> <li>instantaneous contact</li> </ul>	1
operational current at AC-12 maximum	10 A
<b>operational current at AC-15</b> <ul style="list-style-type: none"> <li>at 230 V rated value</li> <li>at 400 V rated value</li> <li>at 500 V rated value</li> <li>at 690 V rated value</li> </ul>	6 A 3 A 2 A 1 A
<b>operational current at DC-12</b> <ul style="list-style-type: none"> <li>at 24 V rated value</li> <li>at 110 V rated value</li> <li>at 220 V rated value</li> </ul>	6 A 3 A 1 A
<b>operational current at DC-13</b> <ul style="list-style-type: none"> <li>at 24 V rated value</li> <li>at 110 V rated value</li> <li>at 220 V rated value</li> <li>at 600 V rated value</li> </ul>	6 A 1 A 0.3 A 0.1 A
<b>Short-circuit protection</b>	
<b>design of the fuse link</b> <ul style="list-style-type: none"> <li>for short-circuit protection of the main circuit <ul style="list-style-type: none"> <li>with type of coordination 1 required</li> <li>with type of coordination 2 required</li> </ul> </li> <li>for short-circuit protection of the auxiliary switch required</li> </ul>	fuse gG: 40 A fuse gG: 32 A fuse gG: 10 A
<b>mounting position</b>	22.5° inclination forward and backward & 360° rotation, in relation to normal vertical mounting plane
<b>fastening method</b>	screw and snap-on mounting onto 35 mm DIN rail according to DIN EN 60715
<b>height</b>	74.5 mm
<b>width</b>	45 mm

depth	87 mm		
Connections/ Terminals			
type of electrical connection			
• for main current circuit		screw-type terminals	
• for auxiliary and control circuit		screw-type terminals	
type of connectable conductor cross-sections for main contacts			
• solid or stranded		1x (1.5 ... 6 mm²), 2x (1.5 ... 6 mm²)	
• finely stranded with core end processing		1x (1 ... 6 mm²), 2x (1 ... 2.5 mm²)	
type of connectable conductor cross-sections			
• for auxiliary contacts			
— solid or stranded		1x (1 ... 4 mm²), 2x (1 ... 4 mm²)	
— finely stranded with core end processing		1x (1 ... 2.5 mm²), 2x (1 ... 1.5 mm²)	
tightening torque			
• for main contacts with screw-type terminals		1.7 N·m	
• for auxiliary contacts with screw-type terminals		1.2 N·m	
design of the thread of the connection screw			
• for main contacts		M3.5	
• of the auxiliary and control contacts		M3.5	
Approvals Certificates			
General Product Ap- proval	Test Certificates	other	Environment

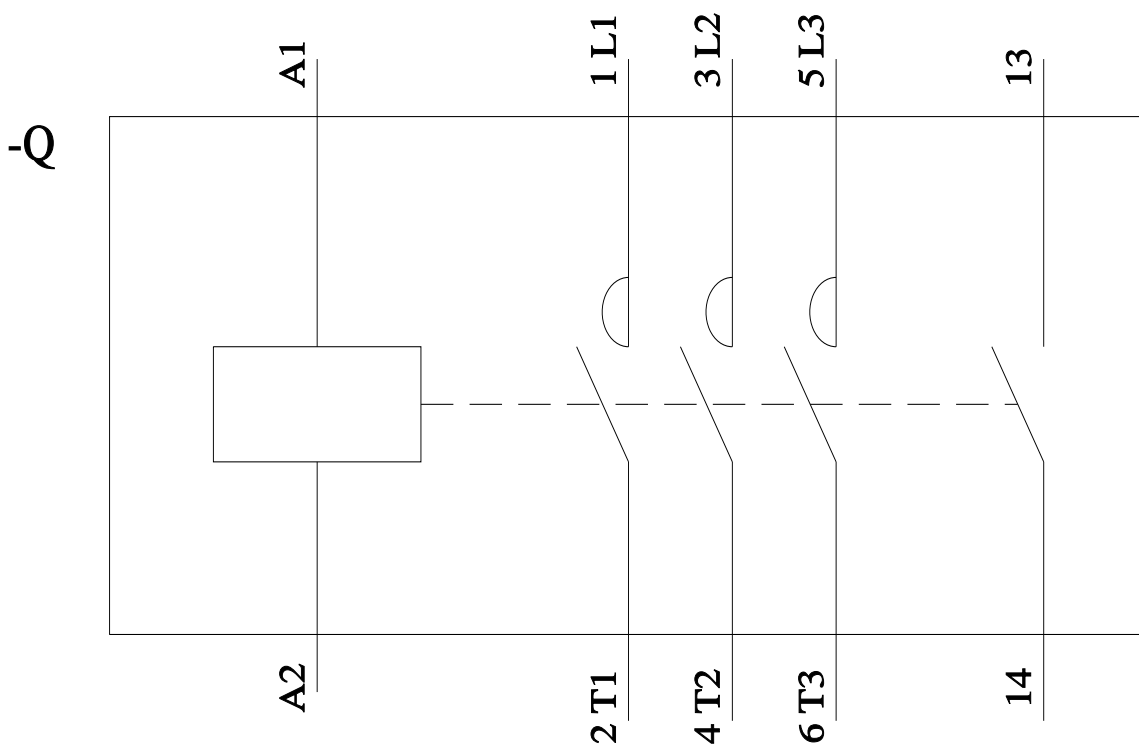
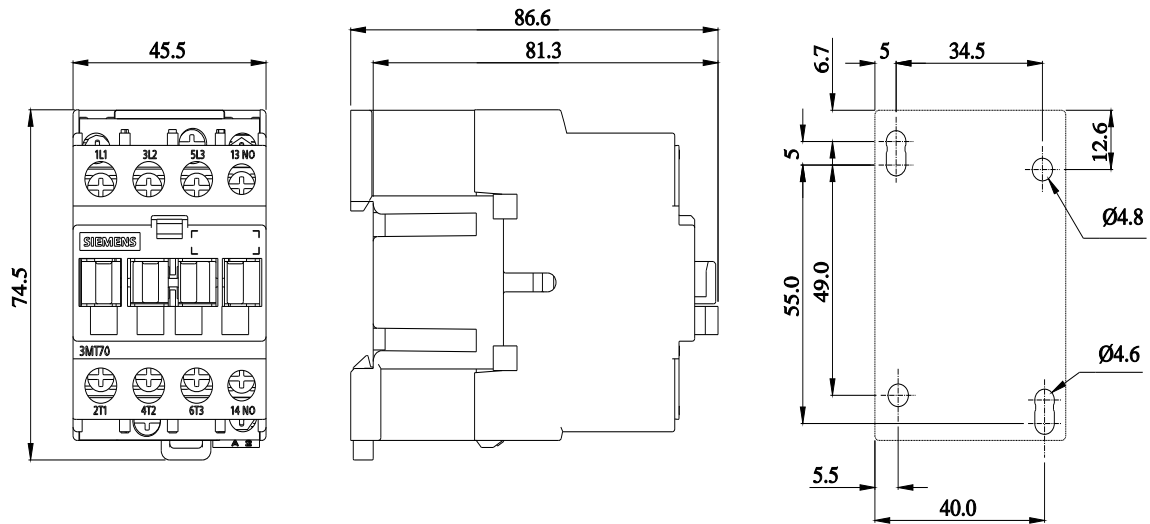


[Type Test Certificates/Test Report](#)

[Confirmation](#)

[Environmental Confirmations](#)

Further information
Information on the packaging <a href="https://support.industry.siemens.com/cs/ww/en/view/109813875">https://support.industry.siemens.com/cs/ww/en/view/109813875</a>
Information for data generation and storage <a href="https://support.industry.siemens.com/cs/ww/en/view/109995012">https://support.industry.siemens.com/cs/ww/en/view/109995012</a>
Information- and Downloadcenter (Catalogs, Brochures,...) <a href="https://www.siemens.com/ic10">https://www.siemens.com/ic10</a>
Industry Mall (Online ordering system) <a href="https://mall.industry.siemens.com/mall/en/en/Catalog/product?mlfb=3MT7022-1AA10-0AP0">https://mall.industry.siemens.com/mall/en/en/Catalog/product?mlfb=3MT7022-1AA10-0AP0</a>
Service&Support (Manuals, Certificates, Characteristics, FAQs,...) <a href="https://support.industry.siemens.com/cs/ww/en/ps/3MT7022-1AA10-0AP0">https://support.industry.siemens.com/cs/ww/en/ps/3MT7022-1AA10-0AP0</a>
Image database (product images, 2D dimension drawings, 3D models, device circuit diagrams, EPLAN macros, ...) <a href="https://www.automation.siemens.com/bilddb/cax_de.aspx?mlfb=3MT7022-1AA10-0AP0&amp;lang=en">https://www.automation.siemens.com/bilddb/cax_de.aspx?mlfb=3MT7022-1AA10-0AP0&amp;lang=en</a>
Cax online generator <a href="https://support.automation.siemens.com/WW/CAXorder/default.aspx?lang=en&amp;mlfb=3MT7022-1AA10-0AP0">https://support.automation.siemens.com/WW/CAXorder/default.aspx?lang=en&amp;mlfb=3MT7022-1AA10-0AP0</a>
Characteristic curves <a href='https://curves.simaris.siemens.com/curves/&lt;mmp_prod_noCOMP="HAUPT"&gt;&lt;/mmp_prod_no&gt;'>https://curves.simaris.siemens.com/curves/&lt;mmp_prod_noCOMP="HAUPT"&gt;&lt;/mmp_prod_no&gt;</a>



last modified:

4/4/2025

3MT70221AA100AP0

Page 4/5

12/20/2025

Subject to change without notice

© Copyright Siemens

[www.famcocorp.com](http://www.famcocorp.com)

E-mail: [info@famcocorp.com](mailto:info@famcocorp.com)

@famco\_group

Tel: ۰۲۱- ۴ ۸ ۰ ۰ ۰ ۰ ۴ ۹

Fax : ۰۲۱ - ۴۴۹۹۴۶۴۲

تهران، کیلومتر ۲۱ بزرگراه لشگری (جاده مخصوص کرج)

روبروی پالایشگاه نفت پارس، پلاک ۱۲

