

SIEMENS

Data sheet

3MT7050-3AA11-0AP0



3P Power Contactor AC3:50A 1NO+1NC AC230V 50Hz Main circuit: Screw
Auxiliary circuit: Screw

product brand name	SINOVA
product designation	Power contactor
General technical data	
size of contactor	3
product extension auxiliary switch	Yes
power loss [W] for rated value of the current	
• at AC in hot operating state	22.176 W
• at AC in hot operating state per pole	7.392 W
insulation voltage	
• of main circuit with degree of pollution 3 rated value	1 000 V
• of auxiliary circuit with degree of pollution 3 rated value	1 000 V
surge voltage resistance	
• of main circuit rated value	8 kV
• of auxiliary circuit rated value	6 kV
protection class IP	
• on the front	IP20
mechanical service life (operating cycles)	
• of contactor typical	5 000 000
reference code according to IEC 81346-2	Q
Substance Prohibitance (Date)	07/01/2022
Net Weight	1.02 kg
Ambient conditions	
installation altitude at height above sea level maximum	2 000 m
ambient temperature	
• during operation	-5 ... +55 °C
• during storage	-25 ... +70 °C
relative humidity minimum	10 %
relative humidity at 55 °C according to IEC 60068-2-30 maximum	95 %
Main circuit	
number of poles for main current circuit	3
number of NO contacts for main contacts	3
operating voltage at AC-3 rated value maximum	690 V
operational current	
• at AC-1 at 400 V at ambient temperature 40 °C rated value	80 A
• at AC-1 up to 690 V	
— at ambient temperature 40 °C rated value	80 A
— at ambient temperature 60 °C rated value	65 A

<ul style="list-style-type: none"> at AC-3 <ul style="list-style-type: none"> at 400 V rated value at 690 V rated value 	50 A 24 A
operating power <ul style="list-style-type: none"> at AC-3 <ul style="list-style-type: none"> at 400 V rated value at 690 V rated value 	22 kW 22 kW
no-load switching frequency <ul style="list-style-type: none"> at AC 	1 200 1/h
operating frequency <ul style="list-style-type: none"> at AC-1 maximum at AC-3 maximum 	600 1/h 600 1/h
Control circuit/ Control	
type of voltage of the control supply voltage	AC
control supply voltage at AC <ul style="list-style-type: none"> at 50 Hz rated value 	230 V
operating range factor control supply voltage rated value of magnet coil at AC <ul style="list-style-type: none"> at 50 Hz 	0.85 ... 1.1
apparent pick-up power of magnet coil at AC <ul style="list-style-type: none"> at 50 Hz 	230 VA
inductive power factor with closing power of the coil <ul style="list-style-type: none"> at 50 Hz 	0.75
apparent holding power of magnet coil at AC <ul style="list-style-type: none"> at 50 Hz 	40 VA
inductive power factor with the holding power of the coil <ul style="list-style-type: none"> at 50 Hz at 60 Hz 	0.3 0.3
closing delay at AC	17 ... 29 ms
opening delay at AC	6 ... 15 ms
Auxiliary circuit	
number of NC contacts for auxiliary contacts <ul style="list-style-type: none"> instantaneous contact 	1
number of NO contacts for auxiliary contacts <ul style="list-style-type: none"> instantaneous contact 	1
operational current at AC-12 maximum	10 A
operational current at AC-15 <ul style="list-style-type: none"> at 230 V rated value at 400 V rated value at 500 V rated value at 690 V rated value 	6 A 3 A 2 A 1 A
operational current at DC-12 <ul style="list-style-type: none"> at 24 V rated value at 110 V rated value at 220 V rated value 	6 A 3 A 1 A
operational current at DC-13 <ul style="list-style-type: none"> at 24 V rated value at 110 V rated value at 220 V rated value at 600 V rated value 	6 A 1 A 0.3 A 0.1 A
Short-circuit protection	
design of the fuse link <ul style="list-style-type: none"> for short-circuit protection of the main circuit <ul style="list-style-type: none"> with type of coordination 1 required with type of coordination 2 required for short-circuit protection of the auxiliary switch required 	fuse gG: 100 A fuse gG: 80 A fuse gG: 10 A
mounting position	22.5° inclination forward and backward & 360° rotation, in relation to normal vertical mounting plane
fastening method	screw and snap-on mounting onto 35 mm or 75 mm standard mounting rail according to DIN EN 60715

height	127.5 mm		
width	74.5 mm		
depth	113 mm		
Connections/ Terminals			
type of electrical connection			
• for main current circuit		screw-type terminals	
• for auxiliary and control circuit		screw-type terminals	
type of connectable conductor cross-sections for main contacts			
• solid or stranded		1x (2.5 ... 25 mm²), 2x (2.5 ... 16 mm²)	
• finely stranded with core end processing		1x (2.5 ... 25 mm²), 2x (2.5 ... 10 mm²)	
type of connectable conductor cross-sections			
• for auxiliary contacts			
— solid or stranded		1x (1 ... 4 mm²), 2x (1 ... 4 mm²)	
— finely stranded with core end processing		1x (1 ... 2.5 mm²), 2x (1 ... 1.5 mm²)	
tightening torque			
• for main contacts with screw-type terminals		5 N·m	
• for auxiliary contacts with screw-type terminals		1.2 N·m	
design of the thread of the connection screw			
• for main contacts		M8	
• of the auxiliary and control contacts		M3.5	
Approvals Certificates			
General Product Ap- proval	Test Certificates	other	Environment

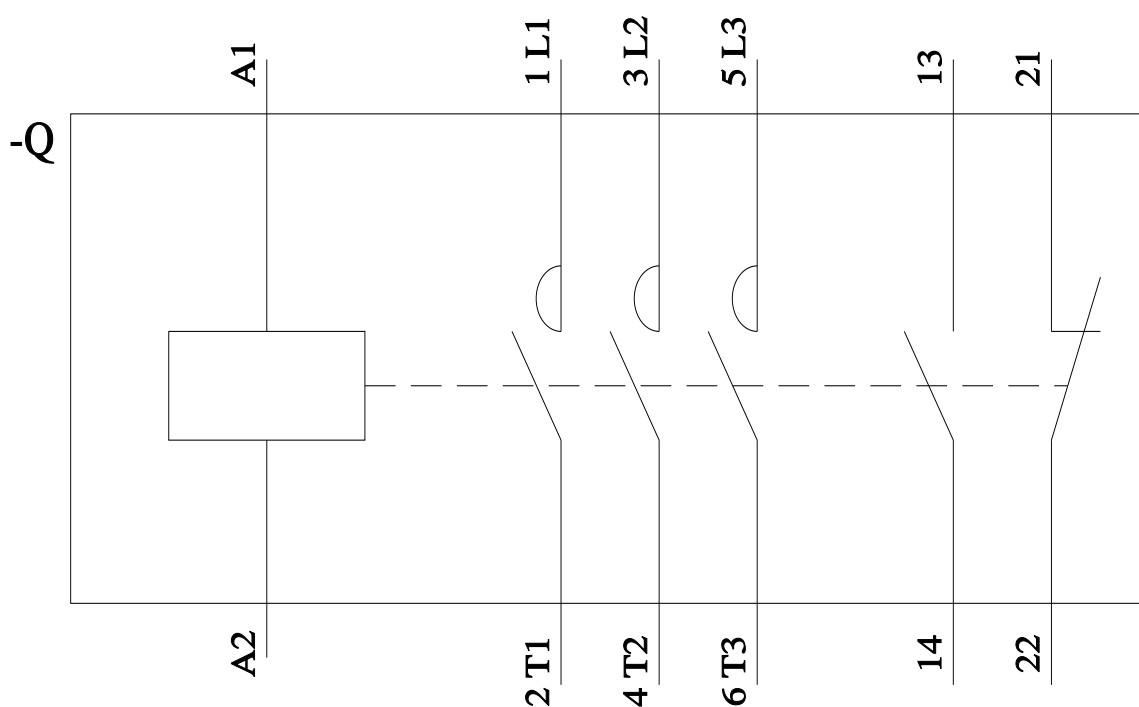
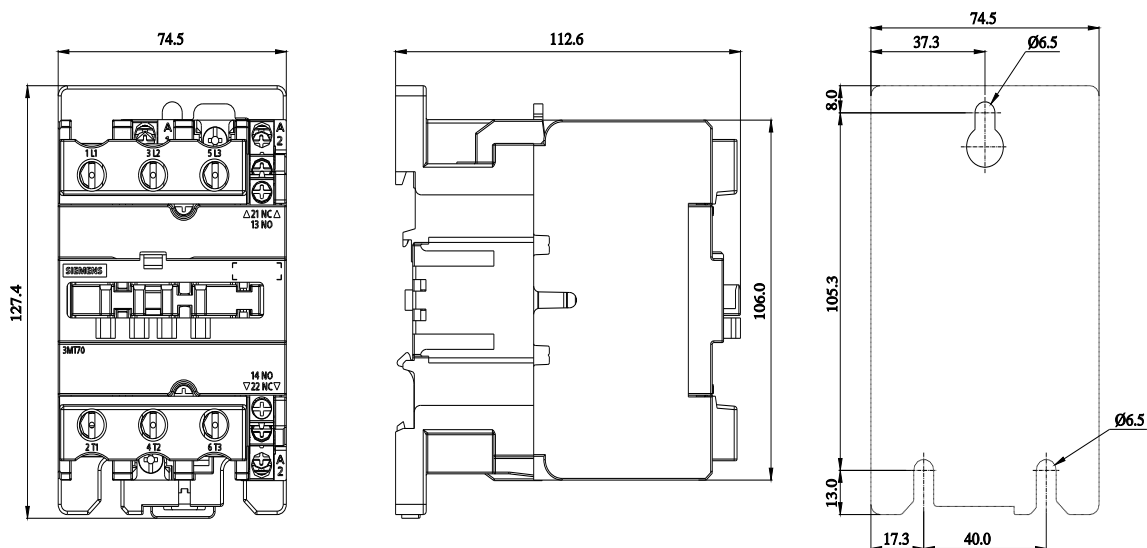


[Type Test Certificates/Test Report](#)

[Confirmation](#)

[Environmental Confirmations](#)

Further information
Information on the packaging https://support.industry.siemens.com/cs/ww/en/view/109813875
Information for data generation and storage https://support.industry.siemens.com/cs/ww/en/view/109995012
Information- and Downloadcenter (Catalogs, Brochures,...) https://www.siemens.com/ic10
Industry Mall (Online ordering system) https://mall.industry.siemens.com/mall/en/en/Catalog/product?mlfb=3MT7050-3AA11-0AP0
Service&Support (Manuals, Certificates, Characteristics, FAQs,...) https://support.industry.siemens.com/cs/ww/en/ps/3MT7050-3AA11-0AP0
Image database (product images, 2D dimension drawings, 3D models, device circuit diagrams, EPLAN macros, ...) https://www.automation.siemens.com/bilddb/cax_de.aspx?mlfb=3MT7050-3AA11-0AP0&lang=en
Cax online generator https://support.automation.siemens.com/WW/CAXorder/default.aspx?lang=en&mlfb=3MT7050-3AA11-0AP0
Characteristic curves <a href='https://curves.simaris.siemens.com/curves/<mmp_prod_noCOMP="HAUPT"></mmp_prod_no>'>https://curves.simaris.siemens.com/curves/<mmp_prod_noCOMP="HAUPT"></mmp_prod_no>



last modified:

4/4/2025

Subject to change without notice
© Copyright Siemens

3MT70503AA110AP0
Page 4/5

12/20/2025

