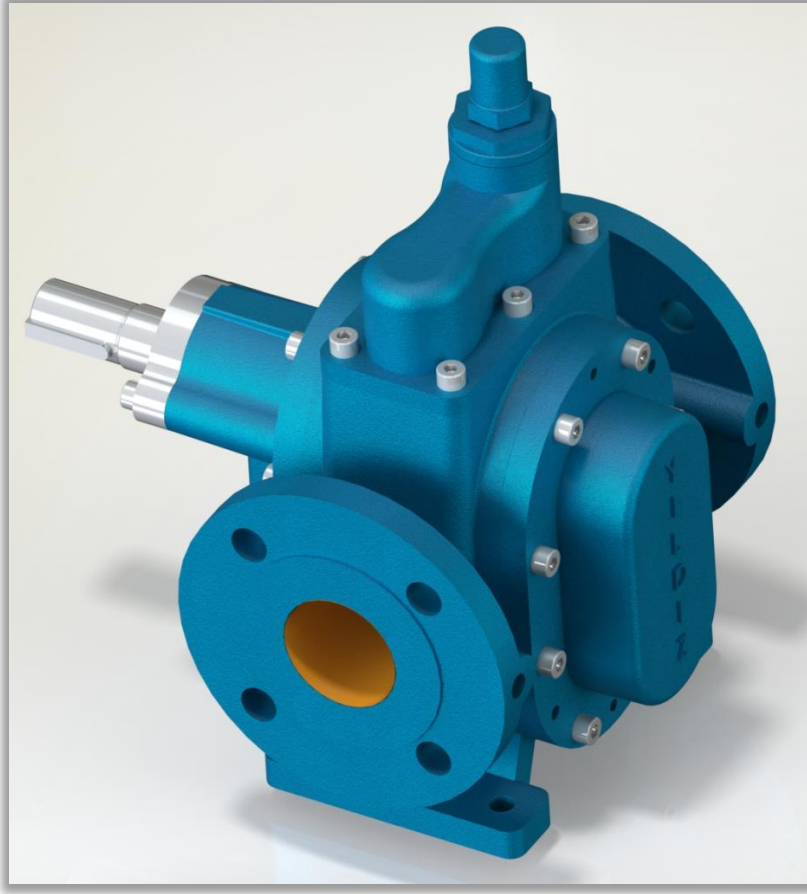
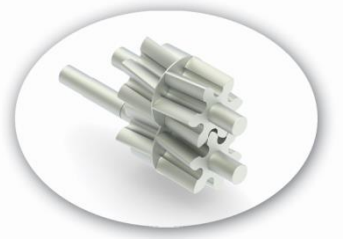


YHL 2 POMPA HELICAL GEAR PUMP



POMPA DEĞERLERİ / PUMP PROPERTIES	
Q	:20 m ³ /h
Hm	:1 ~ 10 Bar
T	:0 ~ 200 °C
n	:1 ~ 1500 d/d
Visc.	:100 ~ 2500 SSU

KULLANIM ALANLARI

- Endüstriyel uygulamalarda,
- Melas,
- Petrol,
- Yakıt,
- Yüksek hacim transferlerinde.

USE AREAS

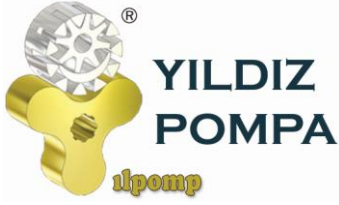
- *Industrial applications*
- *Transfer of molasses,*
- *Petroleum,*
- *Fuel,*
- *High volume transfer*

MALZEME SEÇENEKLERİ

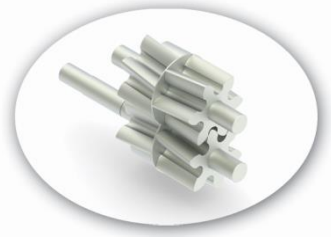
- Pompa Gövdesi, Kapaklar, Dişliler : Dökme (pik) demir, çelik döküm, paslanmaz AISI 304 / 316 döküm, sfero döküm
- Yataklar : Snbz 12 bronz, rulman, karbon grafit, ina burc
- Sızdırmazlık: Yumuşak salmastra, mekanik salmastra.

MATERIAL OPTIONS

- *Pump Body, covers and gears: Cast iron, steel cast, stainless AISI 304 / 316 cast.*
- *Bearings: Snbz 12 bronze, bearing, carbon graphite, Ina bushing bearing.*
- *Sealing: Soft seal, mechanical seal*



YHL 2 POMPA HELICAL GEAR PUMP



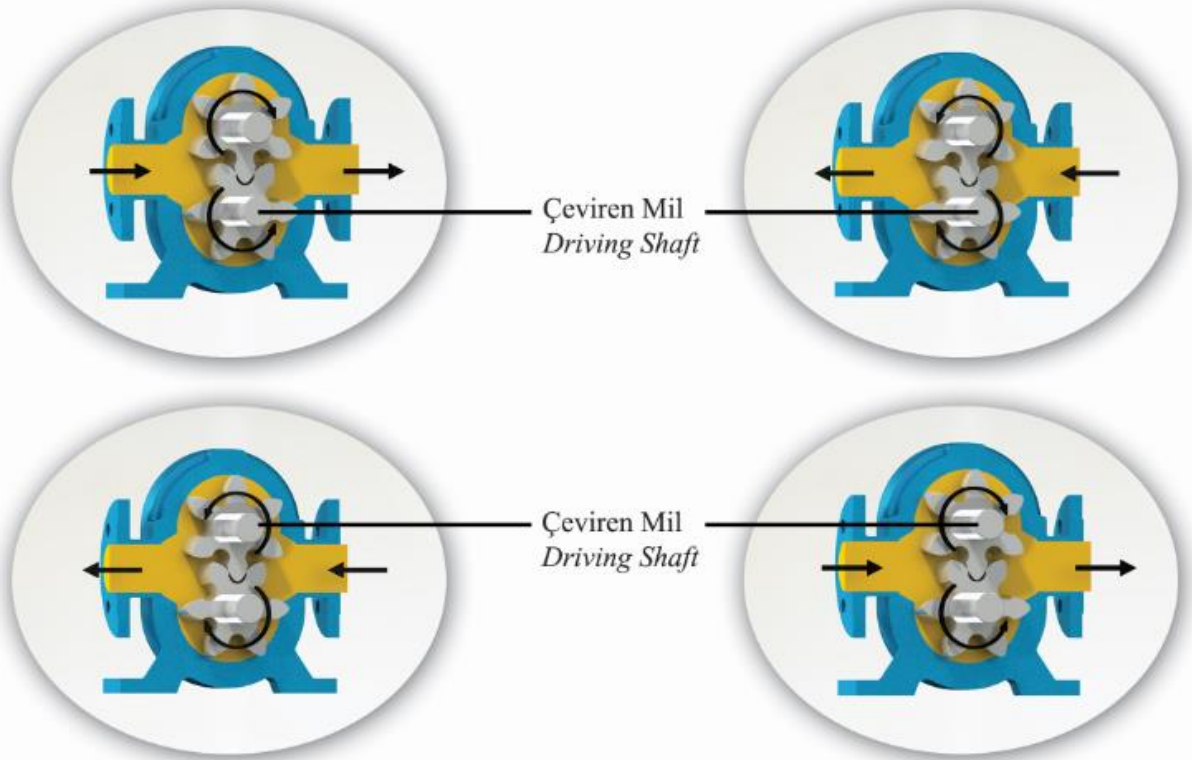
HELİS DİŞLİ POMPA ÇALIŞMA PRENSİBİ / WORKING PRINCIPLE OF HELICAL GEAR PUMP

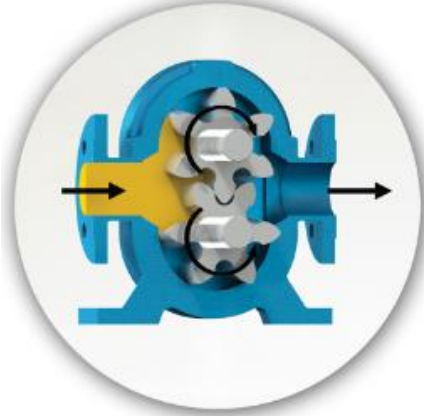
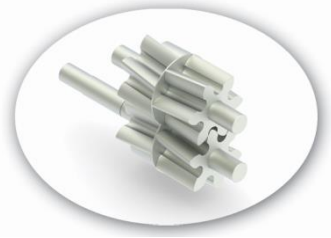
Bu pompalar da dişli pompa prensibiyle çalışır. Pompa mili, motordan almış olduğu dairesel hareketi, mil üzerindeki dişli (çeviren) ile, diğer dişliye (çevrilen) ters yönde iletir. Dişliler birbirinden ayrılırken, dişlilerin arasına sıvı dolar. Bu sıvı, dönme hareketi ile basma bölgesine taşınarak, dişliler iç içe girerken basma kanalına atılır. Sıvının viskozitesine bağlı olarak 20 Bar'a kadar basınç elde edilir.

Helis dişli olması nedeniyle, sessiz çalışması istenen ve kesintisiz debiye ihtiyaç duyulan yerler için ve fazla koyu olmayan, orta basınçlı ortamlarda kullanılabilir.

These pumps work same gear pumps. Pump shaft transmits circular movement with own gear to other gear on inverse side. While gears leave from other, liquid get full between gears. While gears become close, this liquid moves with rotary motion to outlet. We can have pressure until 20 Bar according to liquid viscose.

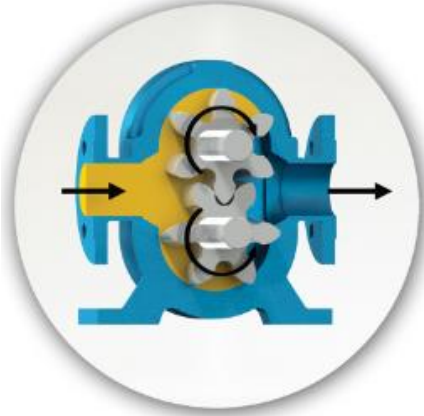
Also they are good in where there is a need for uninterrupted capacity for less viscous and medium pressure places.





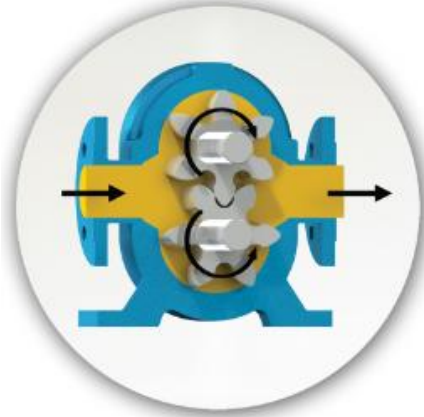
Yandaki renkli kısım sıvının pompa gövdesindeki emiş ağız alanına, çeviren dişli ve çevrilen dişli dişleri arasındaki dişli boşlukları alanına girişini gösterir. İki siyah ok pompanın dönüş ve sıvının ilerleyişini gösterir.

Picture on the side illustrates the entrance of space between rotating and rotated gears, passing by pump port. Black arrows shows pump's rotation direction and progressing of the liquid inside the pump.



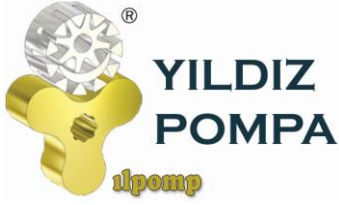
Dişliler ile pompa gövdesi arasında sıvının ilerleyişine dikkat edin. Dişliler birbirlerinin arasında değil, gövde ile dişli boşlukları arasında akışkanı taşımaktadırlar. Bu resim pompanın iç kısmının dolup sıvının boşaltma ağız alanına itilmesinden hemen önceki durumunu göstermektedir.

Pay attention to liquid progress in the gap between gears' teeth and pump casing. Liquid is transferred not through the gears, but between each gear and pump casing. This picture illustrates the progress of the liquid up to pump discharge area.

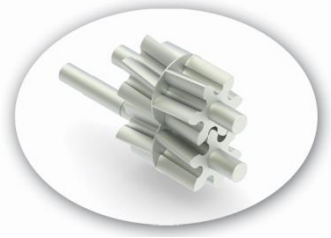


Bu görüntü pompanın tamamen dolup taşıdığı durumu ve sıvının boşaltma işlemini, boşaltma ağızından ilerleyişini göstermektedir. Sıvıyı boşaltma ağızından dışarı doğru iten, çeviren ve çevrilen dişlilerin dişleri birbiri içine geçer.

In this figure, liquid is illustrated during filling all pump inner spaces and flowing out of the pump discharge port. Gears' teeth mesh in and, thus, forces the liquid outside of discharge port.

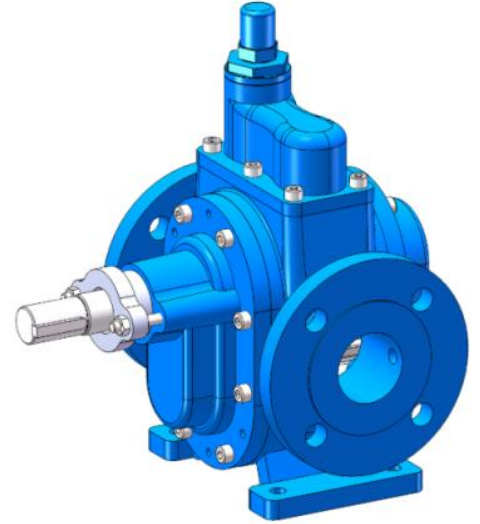
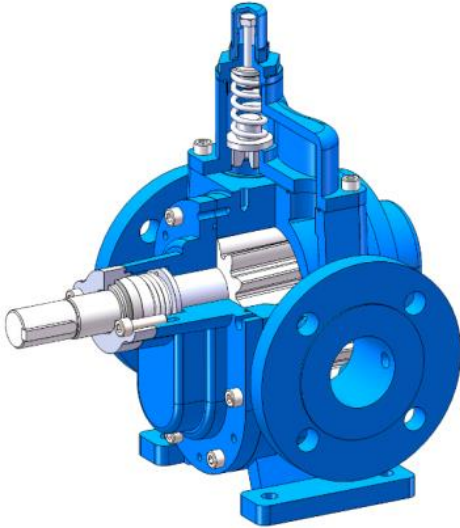


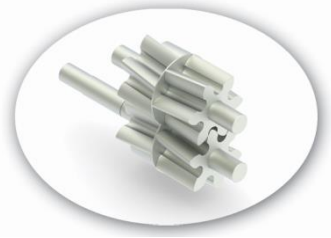
YHL 2 POMPA HELICAL GEAR PUMP



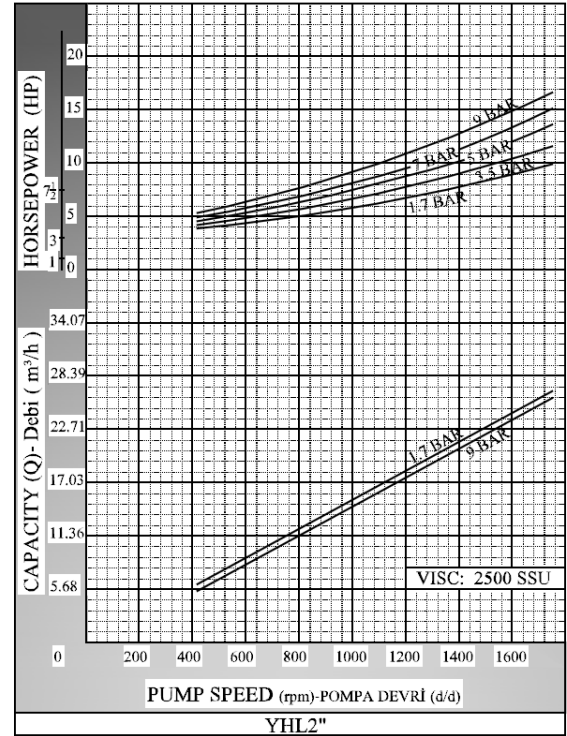
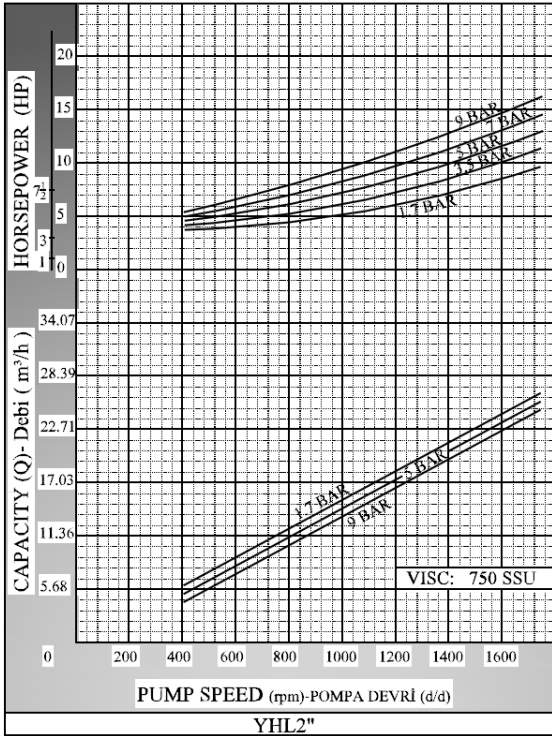
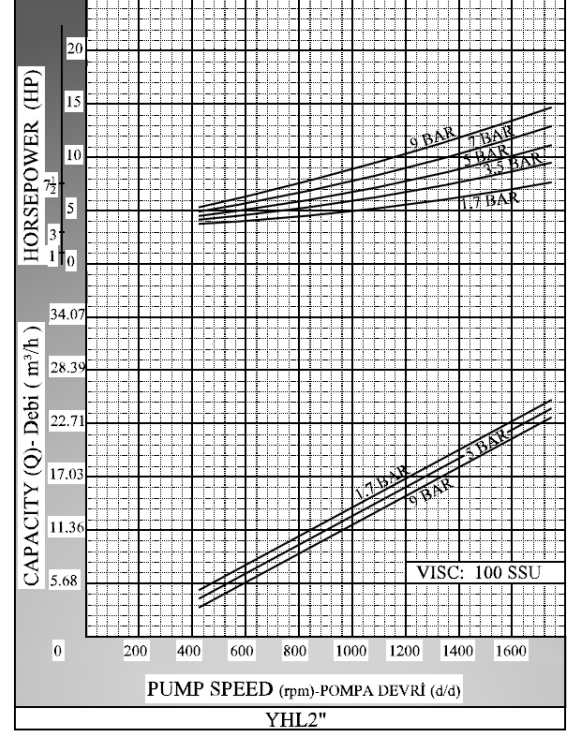
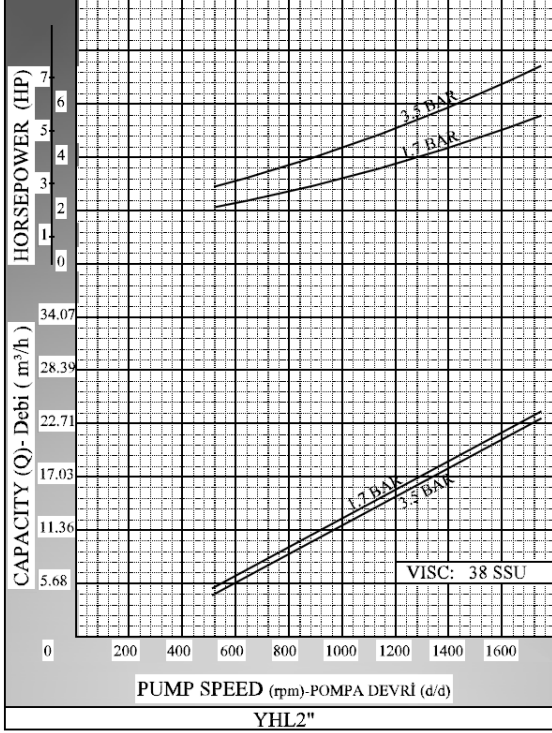
YHL2" POMPASINA AİT KAPASİTE VE GÜÇ TABLOSU / CAPACITY AND POWER TABLE					
KAPASİTE (m ³ /h) CAPACITY (Q)	DEVİR (d/d) SPEED (rpm)	ÇIKIŞ BASINCI / PRESSURE			VİSKOZİTE VISCOSITY
		0 Bar	3,5 Bar	7 Bar	
3,7	300	2 HP	3 HP	3 HP	25000 SSU
6,3	500	3 HP	3 HP	4 HP	7500 SSU
10,5	750	2 HP	3 HP	4 HP	2500 SSU
14	1000	3 HP	4 HP	5,5 HP	750 SSU
18,7	1400	4 HP	5,5 HP	7,5 HP	100 SSU

MOTOR GÜÇLERİ MOTOR POWERS		MOTOR GÜÇLERİ MOTOR POWERS		MOTOR GÜÇLERİ MOTOR POWERS	
4 HP	1400 d/d (rpm)	2 HP	750 d/d (rpm)	3 HP	750 d/d (rpm)
MOTOR GÖVDESİ MOTOR BODY		3 HP	900 d/d (rpm)	4 HP	750 d/d (rpm)
100		5,5 HP	1400 d/d (rpm)	4 HP	900 d/d (rpm)
		MOTOR GÖVDESİ MOTOR BODY		5,5 HP	900 d/d (rpm)
		112		7,5 HP	1400 d/d (rpm)
				MOTOR GÖVDESİ MOTOR BODY	
				132	





KAPASİTE EĞRİLERİ / CAPACITY GRAPHS

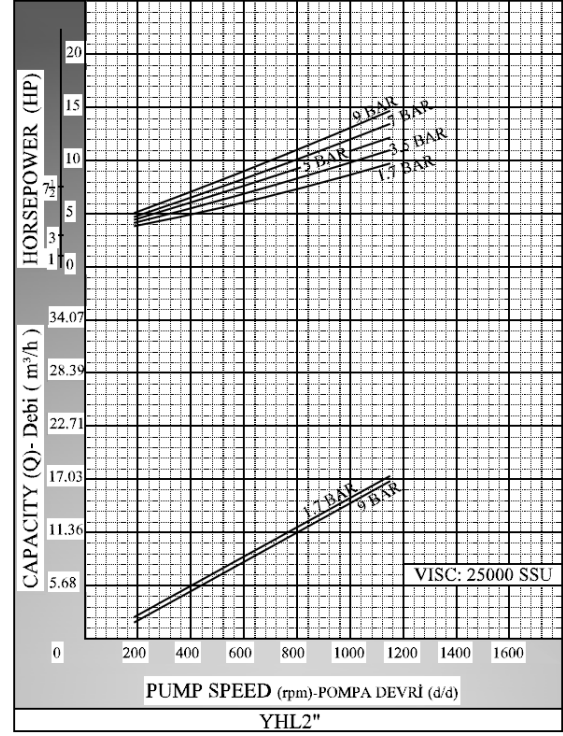
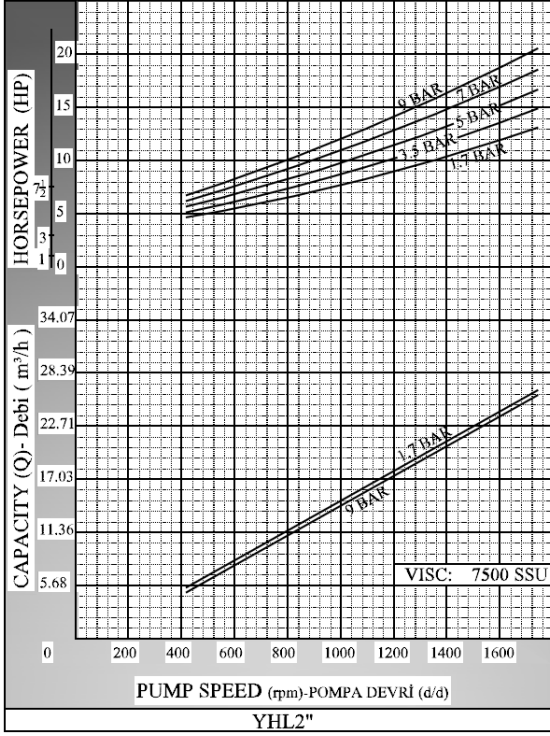
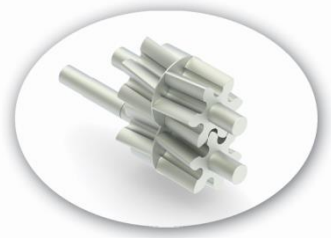




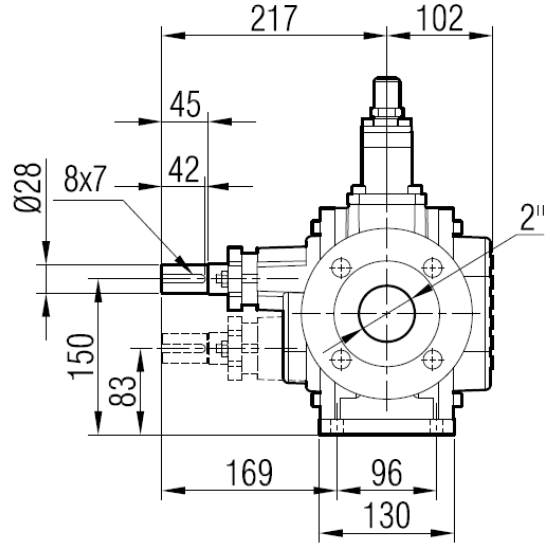
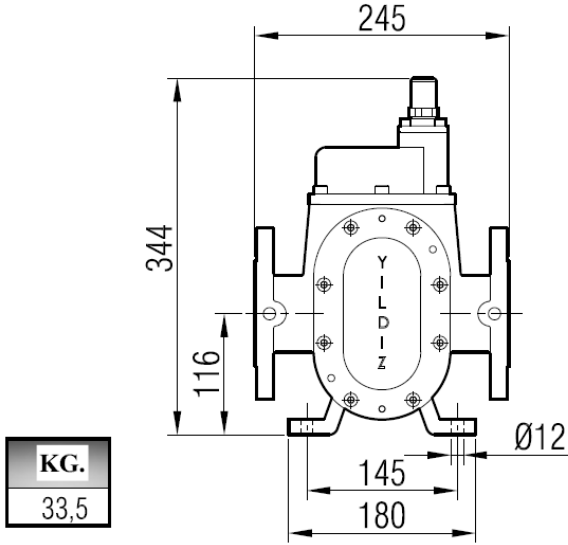
**YILDIZ
POMPA**

ilpomp

YHL 2 POMPA HELICAL GEAR PUMP



POMPA BOYUT ÖLÇÜLERİ / PUMP DIMENSIONS

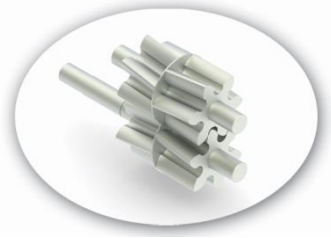




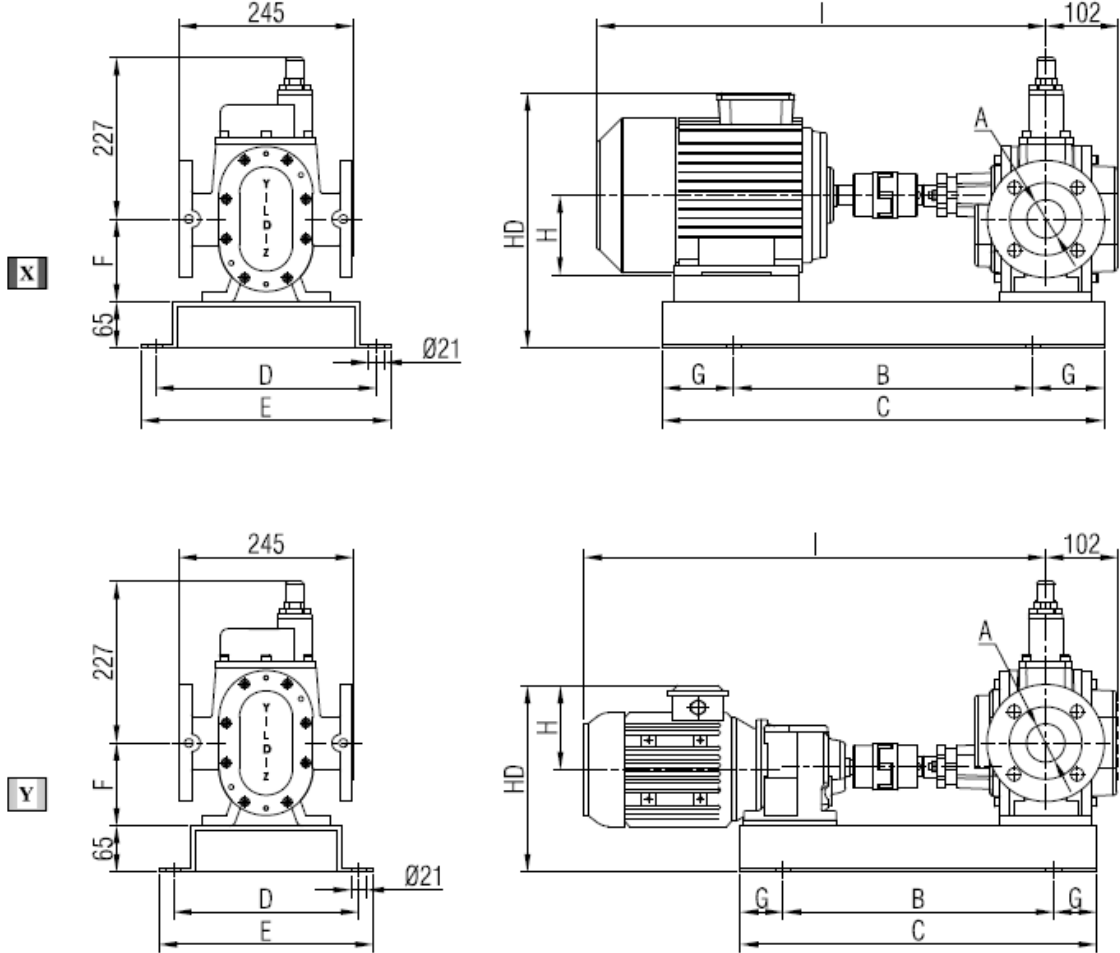
**YILDIZ
POMPA**

ilpomp

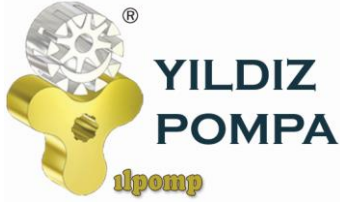
**YHL 2 POMPA
HELICAL GEAR PUMP**



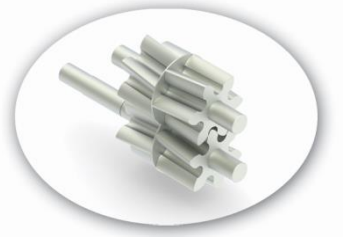
**AKUPLAJ ÖLÇÜLERİ / COUPLING DIMENSIONS
MOTOR VE REDÜKTÖR AKUPELİ / MOTOR AND GEARBOX DRIVE**



MOTOR GÜÇ VE DEVİRLERİ / MOTOR POWER AND SPEED				I	HD	H	B	C	D	E	F	G	kg.
X	2 hp / 1,5 kw	750 d/d (rpm)	MOTOR 112M	631	359	112	420	620	310	350	116	100	83
	3 hp / 2,2 kw	900 d/d (rpm)											
	3 hp / 2,2 kw	750 d/d (rpm)	MOTOR 132S	692	383	132	500	700	260	300	124	60	64
	4 hp / 3 kw	900 d/d (rpm)											
	4 hp / 3 kw	750 d/d (rpm)	MOTOR 132M	730	141	430	550	260	300	124	60	71	78
	4 hp / 3 kw	900 d/d (rpm)											
	5,5 hp / 4 kw	750 d/d (rpm)	MOTOR 160M	850	447	160	680	880	390	430	127	100	129
	5,5 hp / 4 kw	900 d/d (rpm)											
	7,5 hp / 5,5 kw	750 d/d (rpm)	MOTOR 160M	850	447	160	680	880	390	430	127	100	139
	7,5 hp / 5,5 kw	900 d/d (rpm)											
10 hp / 7,5 kw	900 d/d (rpm)												140
Y	1 hp / 0,75 kw	200 / 400 d/d (rpm)	İRAM 42/80	649	262	118	380	500	260	300	116	60	60
	1,5 hp / 1,1 kw	200 / 400 d/d (rpm)	İRAM 42/90S	668	276	132							
	2 hp / 1,5 kw	200 / 545 d/d (rpm)	İRAM 52/90L	729	282	430	550	260	300	124	60	71	78
	4 hp / 3 kw	280 / 545 d/d (rpm)	İRAM 52/100L	758	291								
	5,5 hp / 4 kw	200 / 570 d/d (rpm)	İRAM 62/112M	842	318	149	420	620	310	350	149	100	105

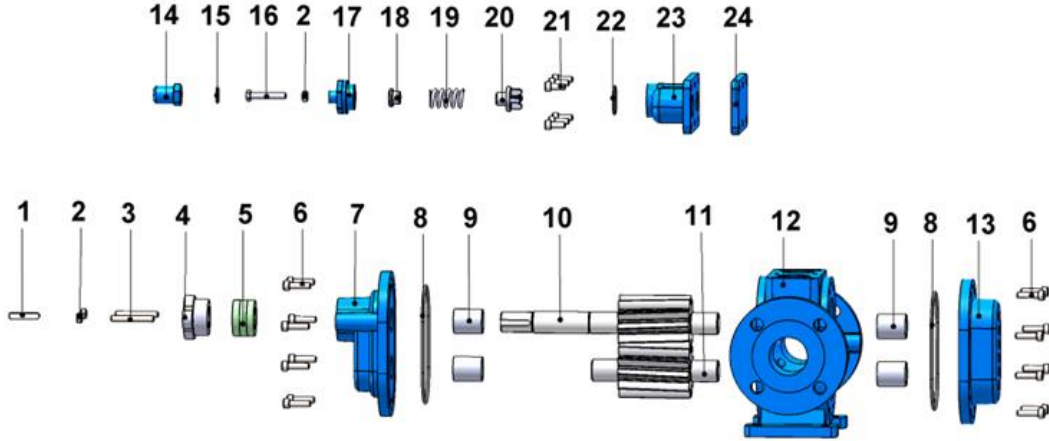


YHL 2 POMPA HELICAL GEAR PUMP

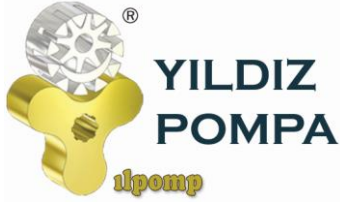


YEDEK PARÇA LİSTESİ / SPARE PARTS LIST

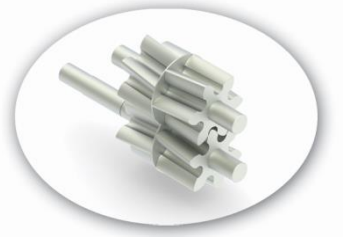
YUMUŞAK SALMASTRALI VE BYPASSLI / SEALED WITH SOFT SEAL AND PRESSURE RELIEF VALVE ON COVER



No	PARÇA İSMİ	PART NAME	ADET/ QTY.
1	KAPLİN KAMASI 8x7x42 AB	COUPLING KEY 8x7x42 AB	1
2	M8 SOMUN	NUT M8	3
3	SAPLAMA M8x60	STUD M8x60	2
4	YUMUŞAK SALMASTRA BASKISI	PACKING PRESS	1
5	YUMUŞAK SALMASTRA	PACKING GLAND / SOFT SEAL	1 TK.
6	İMBUS CİVATA M8x30	İMBUS BOLT M8x30	16
7	ÖN KAPAK	FRONT COVER	1
8	KAPAK O-RİNG	COVER O-RİNG	2
9	İNA BURÇ	İNA BEARING	4
10	UZUN MİL	DRIVING SHAFT	1
11	KISA MİL	DRIVEN SHAFT	1
12	GÖVDE	CASING	1
13	ARKA KAPAK	BACK COVER	1
14	TİJ KAPAĞI	CAP	1
15	TİJ KAPAK O-RİNG	CAP O-RİNG	1
16	6 KÖŞE CİVATA M8x55	ADJUSTING SCREW M8x55	
17	BYPASS KAPAĞI	BYPASS COVER	1
18	PUL	WASHER	1
19	YAY	SPRING	1
20	KLEPE	VALVE	1
21	İMBUS CİVATA M8x20	İMBUS BOLT M8x20	6
22	BYPASS O-RİNG	BYPASS O-RİNG	1
23	BYPASS	PRESSURE RELIEF VALVE	1
24	BYPASS KÖR KAPAK	BYPASS INLETS COVER	1

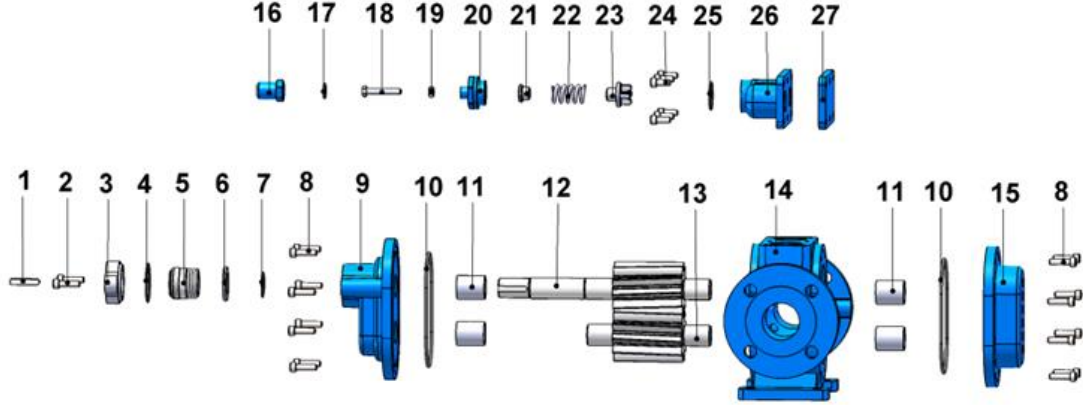


YHL 2 POMPA HELICAL GEAR PUMP



YEDEK PARÇA LİSTESİ / SPARE PARTS LIST

MEKANİK SALMASTRALI VE BYPASSLI / SEALED WITH MECHANICAL SEAL, AND PRESSURE RELIEF VALVE ON COVER



No	PARÇA İSMİ	PART NAME	ADET/ QTY.
1	KAPLİN KAMASI 8x7x42 AB	COUPLING KEY 8x7x42 AB	1
2	6 KÖŞE CİVATA M8x30	ADJUSTING SCREW M8x30	2
3	MEKANİK SALMASTRA KAPAĞI	MECHANICAL SEAL COVER	1
4	MEKANİK KAPAK O-RİNG	MECHANICAL COVER O-RING	1
5	MEKANİK SALMASTRA Ø30	MECHANICAL SEAL Ø30	1
6	MEKANİK SALMASTRA PULU	MECHANICAL SEAL WASHER	1
7	DIŞ SEGMAN (Ø30)	EXTERNAL CIRCLIP (Ø30)	1
8	IMBUS CİVATA M8x30	INBUS BOLT M8x30	16
9	ÖN KAPAK	FRONT COVER	1
10	KAPAK O-RİNG	COVER O-RING	2
11	İNA BURÇ	INA BEARING	4
12	UZUN MİL	DRIVING SHAFT	1
13	KISA MİL	DRIVEN SHAFT	1
14	GÖVDE	CASING	1
15	ARKA KAPAK	BACK COVER	1
16	TİJ KAPAĞI	CAP	1
17	TİJ KAPAK O-RİNG	CAP O-RING	1
18	6 KÖŞE CİVATA M8x55	ADJUSTING SCREW M8x55	1
19	M8 SOMUN	NUT M8	1
20	BYPASS KAPAĞI	BYPASS COVER	1
21	PUL	WASHER	1
22	YAY	SPRING	1
23	KLEPE	VALVE	1
24	IMBUS CİVATA M8x20	INBUS BOLT M8x20	6
25	BYPASS O-RİNG	BYPASS O-RING	1
26	BYPASS	PRESSURE RELIEF VALVE	1
27	BYPASS KÖR KAPAK	BYPASS INLETS COVER	1