

mANT series



The new sector mANT antennas are the perfect companion for the BaseBox, NetBox, NetMetal or any other outdoor wireless device.

The mANT is a dual-polarization antenna with two RP-SMA connectors, it comes in two sizes, the 15dBi model and the 19dBi model. Both antennas have 120 degree beamwidth.

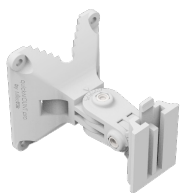


mANT 15s



mANT 19s

The mANT 15s is compatible with the SXT type mount, so you can use it with our durable and adjustable QuickMount systems. It comes with quickMOUNT PRO and the mANT 19s comes with metallic U bolt type mounts.



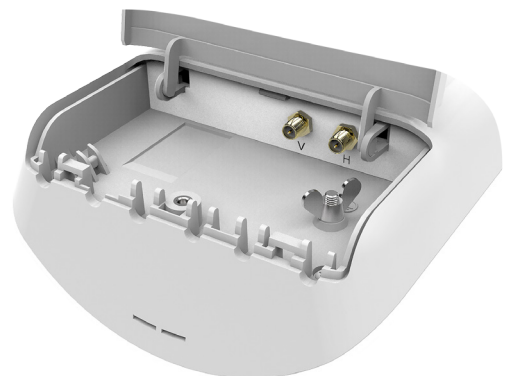
quickMOUNT PRO



K-41 screw kit



Metal ring

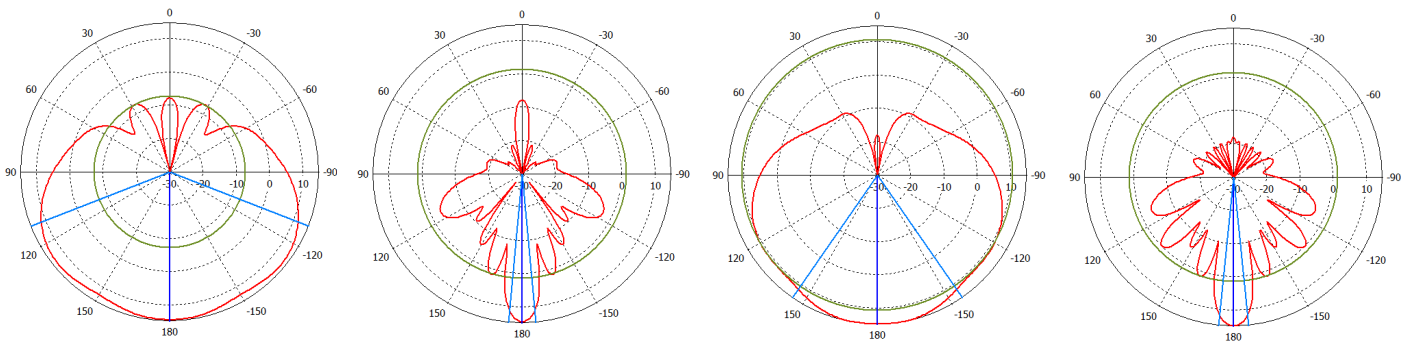


Specifications

| | | |
|---------------------------|-------------------------|-------------------------|
| Product code | MTAS-5G-15D120 | MTAS-5G-19D120 |
| Antenna gain | 15 dBi | 19 dBi |
| Frequency range | 5.17 - 5.825 GHz | 5.17 - 5.825 GHz |
| Polarization | Vertical and horizontal | Vertical and horizontal |
| 3DB Beamwidth - azimuth | 120 deg | 120 deg |
| 3DB Beamwidth - elevation | 10 deg | 5 deg |
| VSWR | 1.43 typ, 1.8 max | 1.43 typ, 1.8 max |
| Port to Port isolation | >40 dB min | >40 dB min |
| Front-to-Back ratio | >30 dB | >30 dB |
| Cross Polarization | >30 dB | >30 dB |
| Weight | 734 g | 1270 g |
| Dimensions | 140 x 348 x 82 mm | 152 x 598 x 78 mm |

Cross Polarization

Antenna patterns

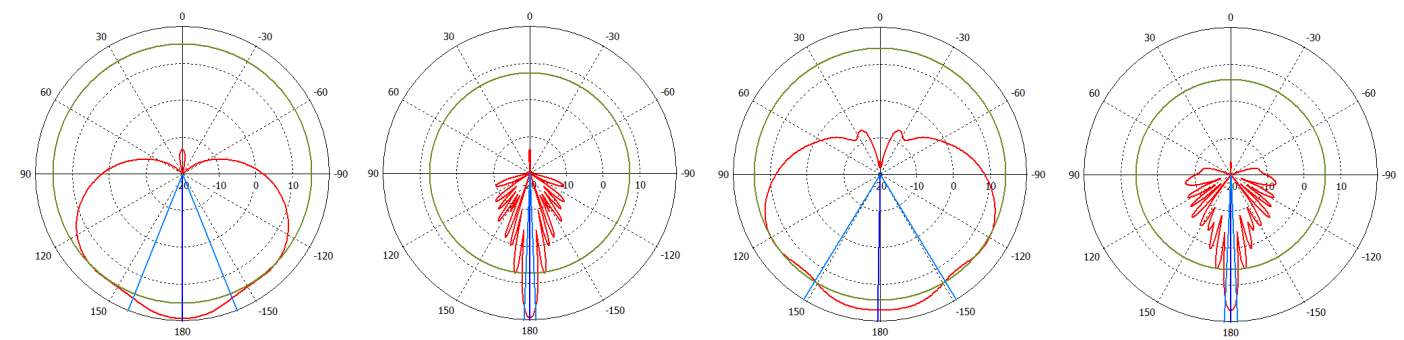


mANT 15s HP azimuth

mANT 15s HP elevation

mANT 15s VP azimuth

mANT 15s VP elevation



mANT 19s HP azimuth

mANT 19s HP elevation

mANT 19s VP azimuth

mANT 19s VP elevation