

# Horizontal Engines

**FAMCO**  
هایپر صنعت



## 1.8hp LC152F

	LC152F
Engine Type	SV
Net Power (hp @ r/min)	1.8 @ 3600
Net Power (kW @ r/min)	1.35 @ 3600
Net Torque (Nm @ r/min)	3.3 @ 3000
Bore x Stroke (mm)	52 x 46
Displacement (cc)	97
Compression Ratio	5.6 : 1
Oil Capacity	0.45
Fuel Consumption	≤ 450 g/kw h
Oil Consumption	≤ 6.8 g/kw h
Idle Speed	1700 ± 150
Starting System	Recoil
Noise (≤ 7m)	70dBA
Dimensions (L x W x H mm)	270 x 270 x 345
Net Weight (kg)	9



## 2.1hp LC154F

	LC154F
Engine Type	Single cylinder, 4-stroke, OHV, forced air cooling
Net Power (hp @ r/min)	2.1 @ 3600
Net Power (kW @ r/min)	1.6 @ 3600
Net Torque (Nm @ r/min)	4.5 @ 3000
Bore x Stroke (mm)	54 x 38
Displacement (cc)	87
Compression Ratio	8.0 : 1
Oil Capacity	0.35
Fuel Consumption	≤ 450 g/kw h
Oil Consumption	≤ 6.8 g/kw h
Idle Speed	1800 ± 150
Starting System	Recoil
Noise (≤ 7m)	70dBA
Dimensions (L x W x H mm)	310 x 260 x 305
Net Weight (kg)	10.5



## 3.5hp G120F

Model	G120F
Engine Type	Single cylinder, 4-stroke, OHV, forced air cooling
Net Power (hp @ r/min)	3.5 @ 3600
Net Power (kW @ r/min)	2.6 @ 3600
Net Torque (Nm @ r/min)	7.3 @ 2500
Bore x Stroke (mm)	60 x 42
Displacement (cc)	118
Compression Ratio	8.5 : 1
Oil Capacity	0.6
Fuel Consumption	≤ 395 g/kw h
Oil Consumption	≤ 6.8 g/kw h
Idle Speed	1450 ± 150
Starting System	Recoil / Electric start
Noise (≤ 7m)	70dBA
Dimensions (L x W x H mm)	341 x 305 x 318
Net Weight (kg)	13



## 4.8hp G160F

Model	G160F
Engine Type	Single cylinder, 4-stroke, OHV, forced air cooling
Net Power (hp @ r/min)	4.8 @ 3600
Net Power (kW @ r/min)	3.6 @ 3600
Net Torque (Nm @ r/min)	10.3 @ 2500
Bore x Stroke (mm)	68 x 45
Displacement (cc)	163
Compression Ratio	8.5 : 1
Oil Capacity	0.6
Fuel Consumption	≤ 395 g/kw h
Oil Consumption	≤ 6.8 g/kw h
Idle Speed	1450 ± 150
Starting System	Recoil / Electric start
Noise (≤ 7m)	70dBA
Dimensions (L x W x H mm)	362 x 312 x 335
Net Weight (kg)	15



## 5.5hp G200F

Model	G200F
Engine Type	Single cylinder, 4-stroke, OHV, forced air cooling
Net Power (hp @ r/min)	5.5 @ 3600
Net Power (kW @ r/min)	4.1 @ 3600
Net Torque (Nm @ r/min)	12.4 @ 2500
Bore x Stroke (mm)	68 x 54
Displacement (cc)	196
Compression Ratio	8.5 : 1
Oil Capacity	0.6
Fuel Consumption	≤ 395 g/kw h
Oil Consumption	≤ 6.8 g/kw h
Idle Speed	1450 ± 150
Starting System	Recoil / Electric start
Noise (≤ 7m)	70dBA
Dimensions (L x W x H mm)	376 x 312 x 335
Net Weight (kg)	16



## 7hp G240F

Model	G240F
Engine Type	Single cylinder, 4-stroke, OHV, forced air cooling
Net Power (hp @ r/min)	7.0 @ 3600
Net Power (kW @ r/min)	5.2 @ 3600
Net Torque (Nm @ r/min)	15.1 @ 2500
Bore x Stroke (mm)	73 x 58
Displacement (cc)	242
Compression Ratio	8.2 : 1
Oil Capacity	0.95
Fuel Consumption	≤ 374 g/kw h
Oil Consumption	≤ 6.8 g/kw h
Idle Speed	1450 ± 150
Starting System	Recoil / Electric start
Noise (≤ 7m)	70dBA
Dimensions (L x W x H mm)	430 x 380 x 410
Net Weight (kg)	24.5



## 9.5hp G340F

G340F	
Engine Type	Single cylinder, 4-stroke, OHV, forced air cooling
Net Power (hp @ r/min)	9.5 @ 3600
Net Power (kW @ r/min)	7.1 @ 3600
Net Torque (Nm @ r/min)	21.6 @ 2500
Bore x Stroke (mm)	82 x 64
Displacement (cc)	337
Compression Ratio	8 : 1
Oil Capacity	1.1
Fuel Consumption	≤ 374 g/kw h
Oil Consumption	≤ 6.8 g/kw h
Idle Speed	1450 ± 150
Starting System	Recoil / Electric start
Noise (≤ 7m)	70dBA
Dimensions (L x W x H mm)	450 x 405 x 443
Net Weight (kg)	31



## 12hp G390F

G390	
Engine Type	Single cylinder, 4-stroke, OHV, forced air cooling
Net Power (hp @ r/min)	12 @ 3600
Net Power (kW @ r/min)	9 @ 3600
Net Torque (Nm @ r/min)	26.5 @ 2500
Bore x Stroke (mm)	90 x 66
Displacement (cc)	420
Compression Ratio	8.3 : 1
Oil Capacity	1.1
Fuel Consumption	≤ 374 g/kw h
Oil Consumption	≤ 6.8 g/kw h
Idle Speed	1450 ± 150
Starting System	Recoil / Electric start
Noise (≤ 7m)	70dBA
Dimensions (L x W x H mm)	450 x 405 x 443
Net Weight (kg)	31



## 12hp G420F

G420	
Engine Type	Single cylinder, 4-stroke, OHV, forced air cooling
Net Power (hp @ r/min)	12 @ 3600
Net Power (kW @ r/min)	9 @ 3600
Net Torque (Nm @ r/min)	26.5 @ 2500
Bore x Stroke (mm)	90 x 66
Displacement (cc)	420
Compression Ratio	8.3 : 1
Oil Capacity	1.1
Fuel Consumption	≤ 374 g/kw h
Oil Consumption	≤ 6.8 g/kw h
Idle Speed	1450 ± 150
Starting System	Recoil / Electric start
Noise (≤ 7m)	70dBA
Dimensions (L x W x H mm)	450 x 405 x 443
Net Weight (kg)	31



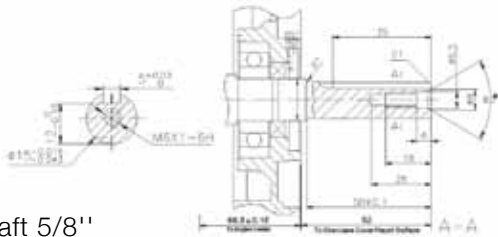
## 19.7 hp V-Twin

LC2V78FD-1	
Engine Type	V-Twin, 4-stroke, OHV, forced air cooling
Net Power (hp @ r/min)	19.7 @ 3600
Net Power (kW @ r/min)	14.7 @ 3600
Net Torque (Nm @ r/min)	43.5 @ 2500
Bore x Stroke (mm)	78 x 71
Displacement (cc)	678
Compression Ratio	8.5 : 1
Fuel Consumption	≤ 360 g/kw h
Idle Speed	1500 ± 150
Speed Fluctuate Ratio	≤ 10%
Starting Mode	Electric
Dimensions (L x W x H mm)	510 x 400 x 450
Net Weight (kg)	43



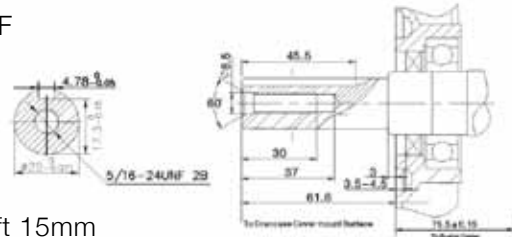
# Repower Engines - Shaft Drawings

LC152F



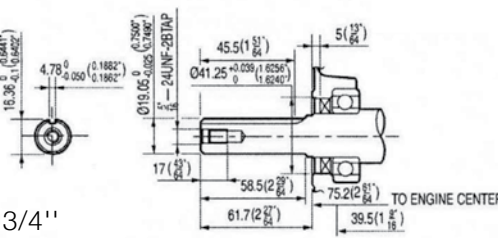
STD-Shaft 5/8"

LC152F



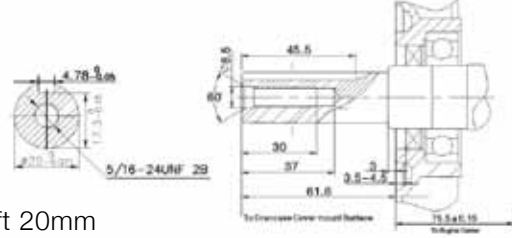
M-Shaft 15mm

G120F



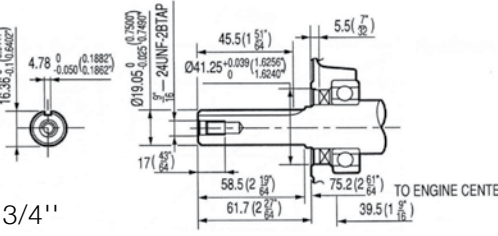
P-Shaft 3/4"

G120F



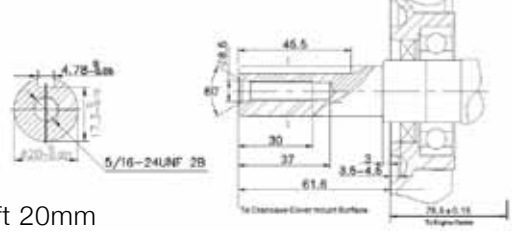
M-Shaft 20mm

G160F



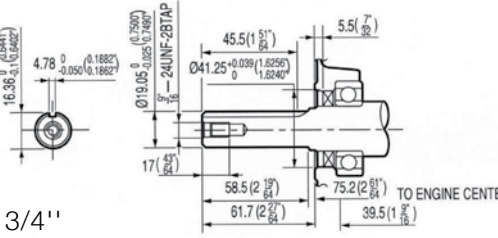
P-Shaft 3/4"

G160F



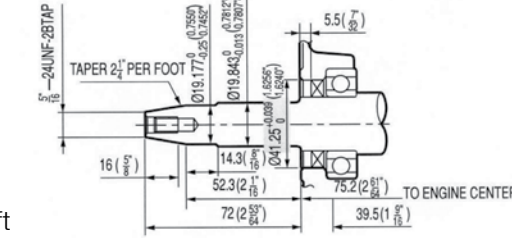
M-Shaft 20mm

G200F



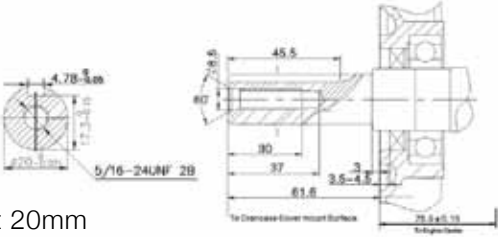
P-Shaft 3/4"

G200F



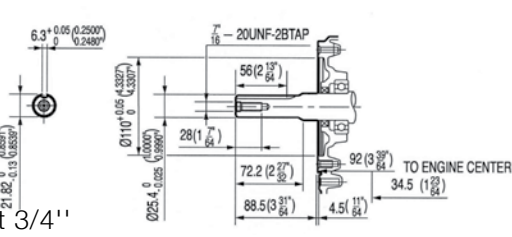
G-Shaft

G200F



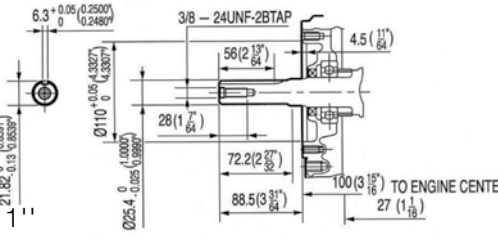
M-Shaft 20mm

G240F



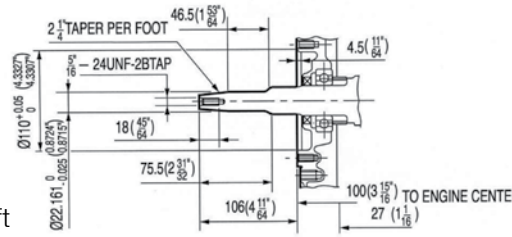
P-Shaft 3/4"

G340F



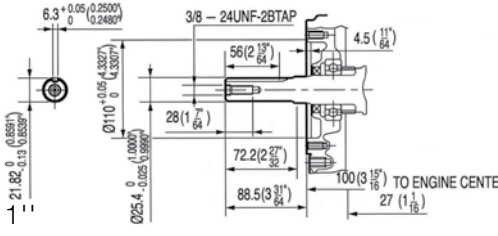
P-Shaft 1"

G340F



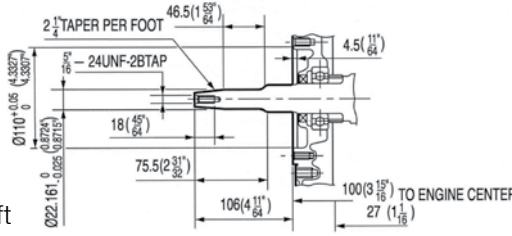
G-Shaft

G390F



P-Shaft 1"

G390F



G-Shaft