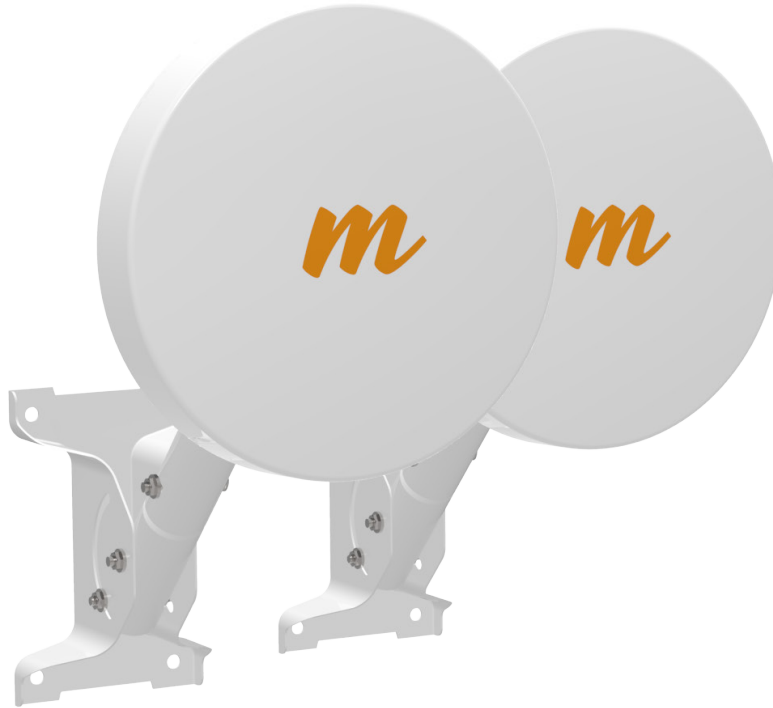


## Fast. Affordable. Easy.

### B5-Lite Point-to-Point Backhaul Bridge Kit

4.9–6.2 GHz



Switch to the award-winning Mimosa B5-Lite, the easiest, fastest, and most affordable wireless bridge kit on the market. This backhaul radio is ideal for connecting large properties, co-located office buildings, hospital buildings, or campuses. No fiber in your future? No problem—the B5-Lite is a great short range fiber-digging alternative. Public safety providers can also take advantage of the licensed 4.9 GHz safety band and easily deploy the B5-Lite for an immediate backhaul boost. The B5-Lite is a fantastic addition to any network. Make the change today and discover blazing backhaul.

#### **Superior Performance**

Our speeds will blow you away. With up to 700 Mbps (IP) and under 1 ms of latency, high performance has never been this affordable.

#### **Monitor with Ease**

Assessing link health and identifying potential problems is easy. Links are instantly monitored by our Mimosa Cloud service with rich data collection and analysis.

#### **Rugged and Affordable**

Extreme outdoor conditions have nothing on the B5-Lite. The B5-Lite handles huge fluctuations with incredible affordability.

#### **Just Mount and Go**

Connect quickly with our complete kit including two B5-Lites, with super compact integrated antennas, two wall mounts and two PoEs.

## Technical Specifications

### Performance

- **Max Throughput:**  
700+ Mbps IP (833+ Mbps PHY)
- **Low Latency:**  
Configurable to 5+ ms
- **Wireless Protocols:**  
Auto-TDD/TDMA

### Radio

- **MIMO and Modulation:**  
2x2:2 MIMO OFDM up to 256-QAM
- **Bandwidth†:**  
20/40/80 MHz channels tunable to 5 MHz increments
- **Frequency Range:**  
4900–6200 MHz restricted by country of operation (\*new\* US/FCC 5600–5650 support)
- **Max Output Power:**  
23 dBm
- **Sensitivity (MCS0):**  
-87 dBm @ 80 MHz  
-90 dBm @ 40 MHz  
-93 dBm @ 20 MHz

### Antenna

- **Gain:** 20 dBi
- **Beamwidth (3 dB):**  
14° (azimuth and elevation)
- **Cross-Polar Isolation:** >20 dB
- **Polarization:** Dual 45° slant polarization

### Power

- **Max Power Consumption:**  
15 W
- **System Power Method:**  
Passive PoE
- **PoE Power Supply:**  
Passive PoE compliant, 48-56 V  
Power over Ethernet supply

### Physical

- **Dimensions:**  
Width: 153.31 mm (6.04")  
Diameter: 260.33 mm (10.25")
- **Weight:** 0.72 kg (1 lb, 9 oz)
- **Enclosure Characteristics:**  
Outdoor UV stabilized plastic

- **Wind Survivability:** 200 km/h (125 mph)
- **Wind Loading:** 39 kg @ 160 km/h (86 lbs @ 100 mph)
- **Mounting:** Single pole strap feed point integrated into plastic back plate with integrated curvature for contact with mounting poles. Azimuth and Elevation adjustability only provided via J-mount elevation adjustment and hose clamp loosened rotation on the pole.

### Environmental

- **Outdoor Ingress Protection Rating:**  
IP55
- **Operating Temperature:**  
-40°C to +55°C (-40°F to 131°F)
- **Outdoor Humidity:** 5 to 100%
- **Operating Altitude:**  
4,420 m (14,501') maximum
- **Shock and Vibration:**  
ETS 300-019-2-4 class 4M5

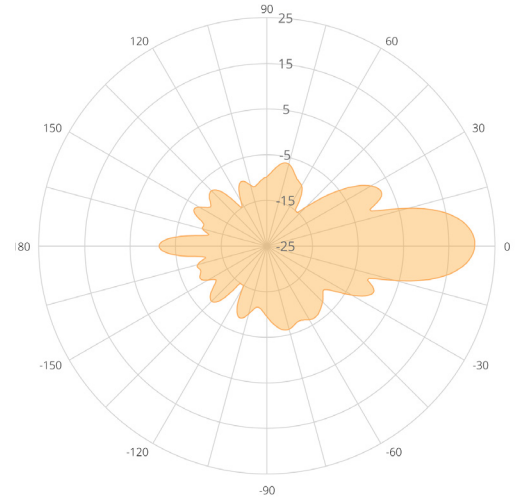
### Features

- **Gigabit Ethernet:**  
10/100/1000-BASE-T
- **Management Services:**  
Mimosa cloud monitoring and management; SNMPv2 & Syslog legacy monitoring; HTTPS; HTML 5 based Web UI
- **Smart Spectrum Management:**  
Active scan monitors/logs ongoing RF interference across channels with no service impact; Dynamic auto-optimization of channel and bandwidth use
- **Security:**  
WPA2 AES 128bit encryption PSK with hardware acceleration
- **QoS:**  
Supports 4 pre-configured QoS levels

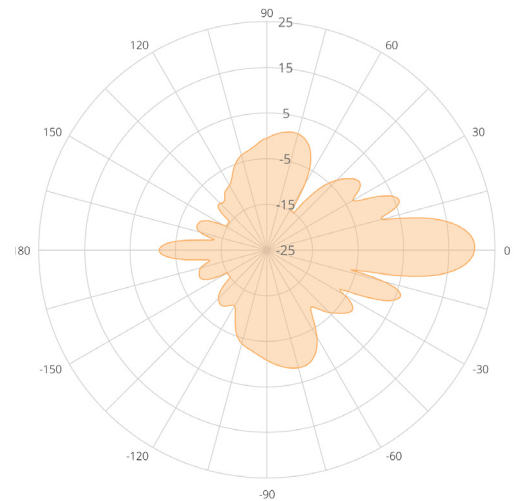
### Regulatory and Compliance

- **Approvals:**  
FCC Part 15.407 and Part 90Y, IC RSS210, CE, ETSI 301 893/302 502
- **RoHS Compliance:** Yes
- **Safety:** UL/EC/EN/ 60950-1 + CSA-22.2

† 4.9 GHz uses 20 MHz channel widths only  
(US only, regulations vary by region)



B5-Lite Azimuth Polar Plot



B5-Lite Elevation Polar Plot

Mimosa Networks, a division of Airspan, is the global technology leader in wireless broadband solutions, enabling service providers to connect dense urban and hard-to-reach rural homes at a fraction of the cost of fiber. Mimosa Networks was acquired in 2018 by Airspan, the leading vendor of 4G/5G LTE small cells and backhaul technologies.