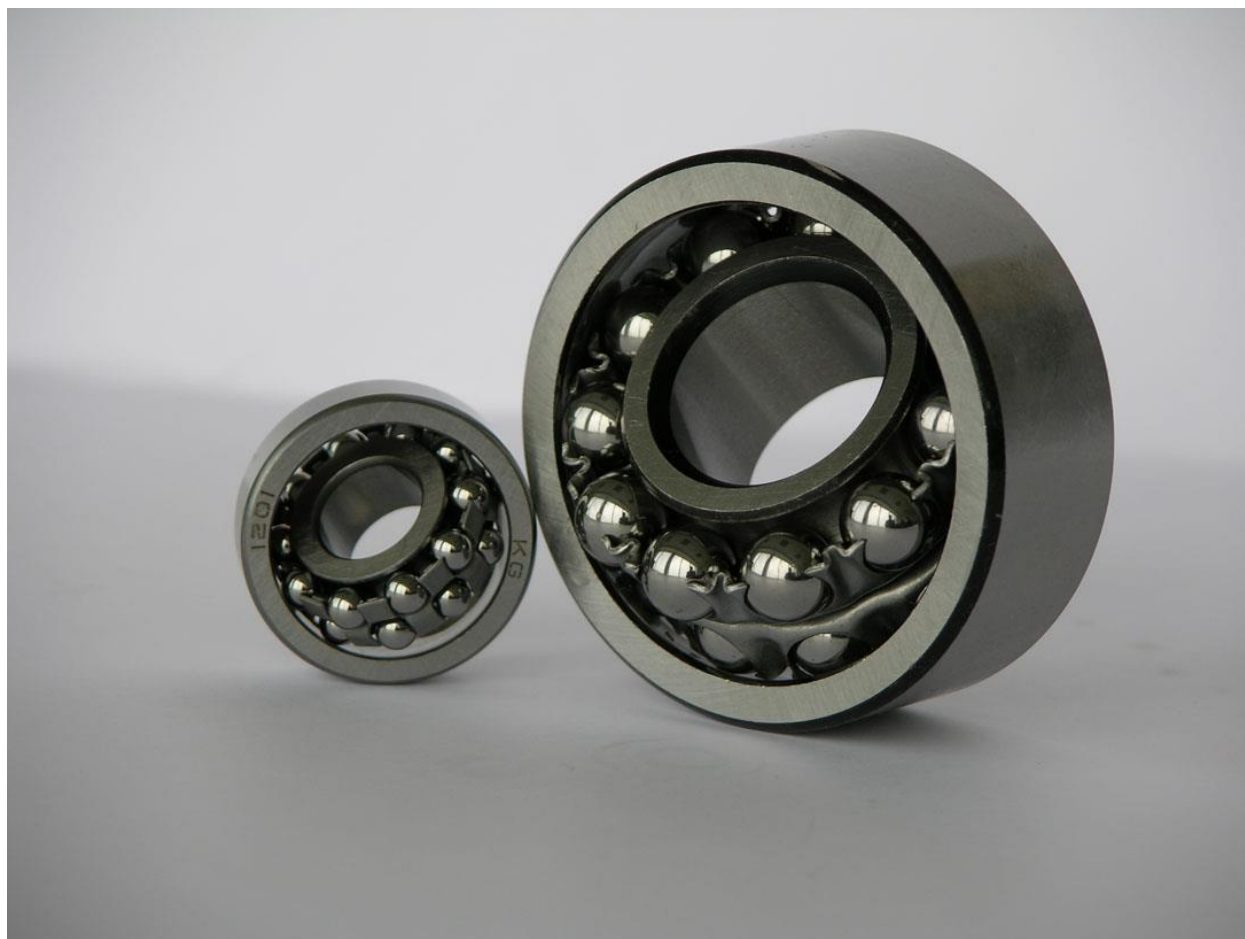


## Self-Aligning Ball Bearings KG



Self-aligning Ball Bearings are designed to contain inner ring and ball assembly in outer ring with a spherical raceway. Due to their special construction, these bearings can tolerate small angular misalignments of shaft up to 2.5 – 3 degrees. These misalignments could either be due to usage, or due to a mounting error.

KG can offer the following variants:

- 1) 12xx, 13xx, 22xx and 23xx series
- 2) Open basic design type
- 3) Cylindrical bore and tapered bore type
- 4) Sealed/shield type
- 5) With C2, CN, C3, radial clearance
- 6) With extended inner ring
- 7) Pressed steel, nylon and machined brass cage

**Note:** KG also offers as a set, Tapered Bore Self-Aligning Ball Bearings with Adapter Sleeves.