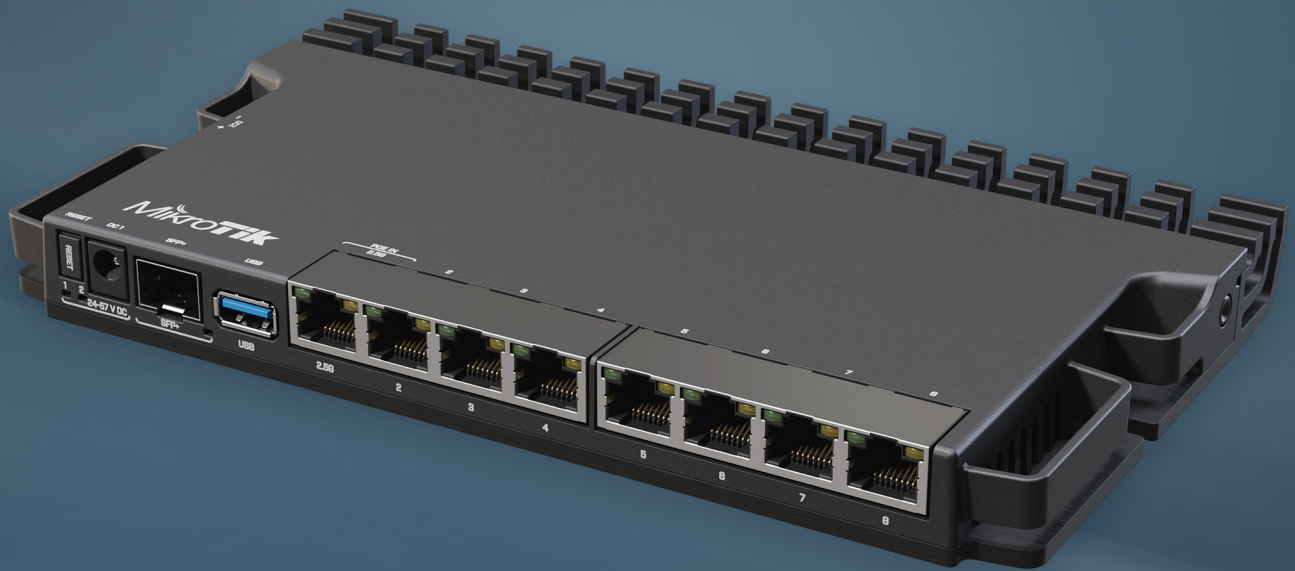


# RB5009UG+S+IN

The ultimate heavy-duty home lab router



*You can mount FOUR of these routers  
in a single 1U rackmount space!*



7x Gigabit Ethernet ports



1x 2.5 Gigabit Ethernet port



10G SFP+



Durable metallic case



Powerful quad-core CPU



1 GB DDR4 RAM



1 GB NAND



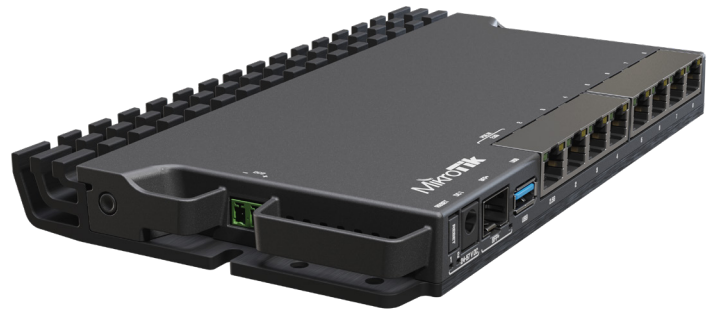
RouterOS v7 only



Multiple powering options

## Double the usual performance

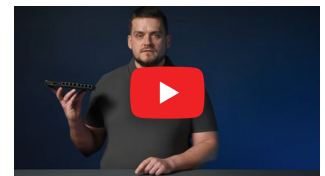
We took your feedback from the MikroTik User Meetings to create the perfect home lab router: compact, powerful, with multiple powering options and efficient cooling. RB5009 has it all, and even more!



The board features 9 wired ports and a full-sized USB 3.0. Seven of the ports are Gigabit Ethernet, another one is 2.5 Gigabit Ethernet, and the last one is a 10G SFP+ cage. All the ports are connected to a powerful Marvell Amethyst family switch-chip with a 10 Gbps full-duplex line leading to the Marvell Armada Quad-core ARMv8 1.4 GHz CPU. **Both CPU and the switch-chip are located on the bottom of the board – so the case acts as a massive heat-sink!**

RB5009UG+S+IN can be powered in 3 different ways:

- a) PoE-in from Ethernet port #1
- b) DC Jack
- c) 2-pin terminal on the side



Boards come with 1GB of DDR4 RAM and 1GB NAND storage. This combination of ports and components, compared to our other products in a similar form factor, provides almost double the performance in configurations with heavy CPU loads.

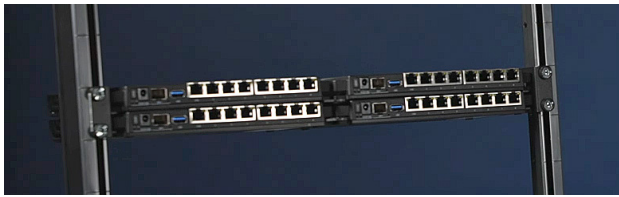
Bridging		1518 byte		512 byte		64 byte	
Configuration	kpps	Mbps	kpps	Mbps	kpps	Mbps	
none (fast path)	811.3	9852.5	2333.7	9558.9	5545.3	3016.7	
25 bridge filter rules	811.3	9852.5	1526.7 <span style="color: green;">+63%</span>	6253.5 <span style="color: green;">+63%</span>	1488.2 <span style="color: green;">+55%</span>	809.6 <span style="color: green;">+55%</span>	

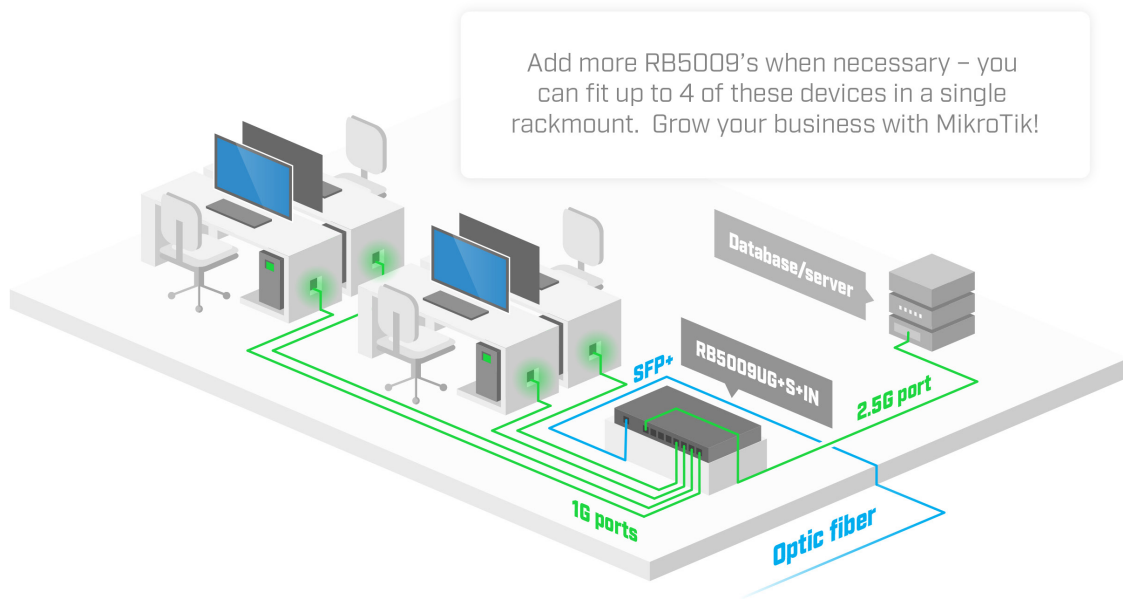
Routing		1518 byte		512 byte		64 byte	
Configuration	kpps	Mbps	kpps	Mbps	kpps	Mbps	
none (fast path)	811.3	9852.5	2333.7	9558.9	4296.0	2337.0	
25 simple queues	811.3 <span style="color: green;">+63%</span>	9852.5 <span style="color: green;">+63%</span>	986.6 <span style="color: green;">+92%</span>	4041.0 <span style="color: green;">+92%</span>	1001.1 <span style="color: green;">+89%</span>	544.6 <span style="color: green;">+89%</span>	
25 ip filter rules	615.9 <span style="color: green;">+71%</span>	7479.1 <span style="color: green;">+71%</span>	624.3 <span style="color: green;">+69%</span>	2557.1 <span style="color: green;">+69%</span>	625.4 <span style="color: green;">+66%</span>	340.2 <span style="color: green;">+66%</span>	

+ Performance increase compared to RB4011

Unprecedented processing power in such a small form factor.



With a simple set of mounting accessories, you can mount FOUR of these routers in a single 1U rackmount space! No more server-room-Tetris, just pure productivity.



## Specifications

Product code	RB5009UG+S+IN
CPU	88F7040 1.4 GHz
CPU architecture	ARM 64bit
CPU core count	4
Size of RAM	1 GB
RAM type	DDR4
Storage	1 GB, NAND
Number of 1G Ethernet ports	7
Number of 2.5G Ethernet ports	1
Number of 10G SFP+ ports	1
USB port	1 (3.0 type A)
Operating system	RouterOS v7 only
Switch chip model	88E6393
Dimensions	220 x 125 x 22 mm
Operating temperature	-40°C to +60°C

## Powering

PoE-in	802.3af/at
Number of DC inputs	3
Supported input voltage	24-57 V (PoE in) 24-57 V (DC jack) 24-57 (2-pin terminal)
Power adapter nominal voltage	24 V
Power adapter nominal current	1.5 A
Max power consumption (without attachments)	14 W
Max power consumption	20 W

## Certification & Approvals

Certification	CE, FCC, IC
---------------	-------------

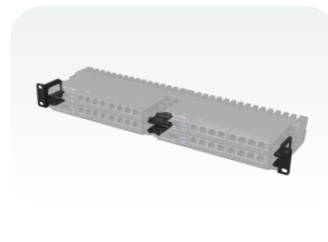
### Included parts



24 V 1.5 A  
power adapter



Fastening  
set



Rackmount  
kit K-79

### Optional accessory