

主要技术参数 General technical data

缸径 Bore (mm) Ø	8	10	12	16	20	25	32	40
工作介质 Medium	经过滤的压缩空气，润滑或未润滑 Filtered compressed air, lubricated or unlubricated							
动作形式 Action Form	复动型、单动伸出型、单动引入型 Double acting type、Single acting-push type、Single acting-pull type							
保证耐压力 Compression Pressure	15 bar							
使用压力范围 Max. Operating Pressure	复动型 Double-acting type	0.5~7 bar						
	单动型 Single-acting type	2~7 bar						
环境温度 Condition Temperature	-5~70° C							
使用速度范围 Operation Speed Range	50~750 mm/s							
气接口 Pneumatic Connection	M5*0.8					1/8"		1/4"

DSNU - 20 - 80 - PPV - A - CA

型号 Type

DSNU / DSN	双作用 Double-acting
ESNU / ESN	单作用 Single-acting

缸径 Bore

行程 Stroke

缓冲形式 Cushioning

P	任意一端具有不可调缓冲器 Flexible cushioning rings/plates at both ends
PPV	两端具有可调缓冲器 Pneumatic cushioning adjustable at both ends

位置感测 Position sensing

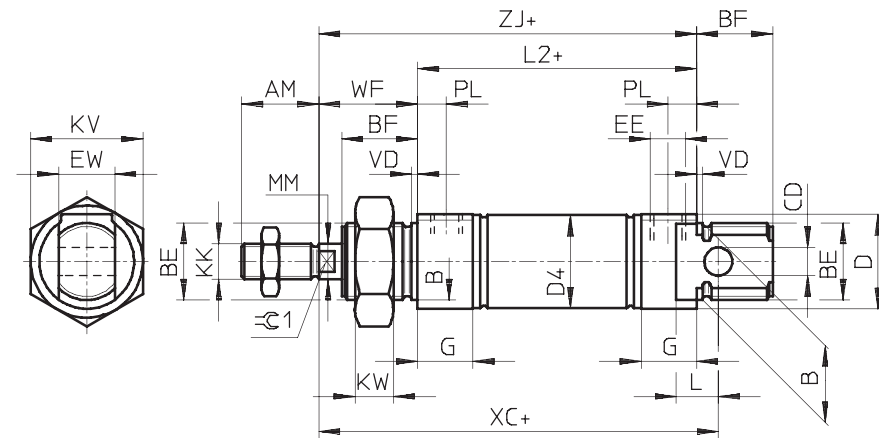
	不带位置感测 Without magnet
A	带位置感测 With magnet

固定型式 Mounting type

CA	摆尾型 Pivot type
U	径向进气型 Perpendicular 90°
R	轴向进气型 Axial air-in
CM	圆尾型 Round-end type

尺寸图 Dimensions

基本尺寸图 Basic version

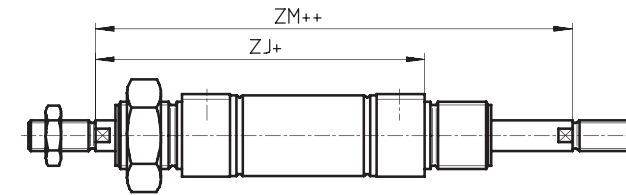


缸径 Bore(mm) Ø	AM	B	BE	BF	CD	D	D4	EE	EW	G	KK	KV
8	12	12	M12*1.25	12	4	15	9.3	M5	8	10	M4	19
10							11.3					
12	16	16	M16*1.5	17	6	20	13.3		12		M6	24
16							17.3					
20	20	22	M22*1.5	20	8	27	21.3	G1/8	16	16	M8	32
25	22			22			26.5				M10*1.25	

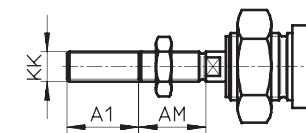
缸径 Bore(mm) Ø	KW	L	L2	MM	PL	TO	VD	WF	XC	ZJ
8	6	6	46	4	6	18	2	16	64	62
10										
12	8	9	50	6		23		22	75	72
16			56						82	78
20	11	12	68	8	8.2	31		24	95	92
25			69.5	10				28	104	97.2

尺寸图-派生型 Dimensions-Variou

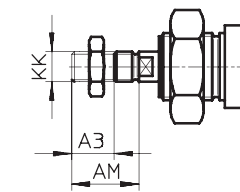
S2 双端活塞杆 Through piston rod



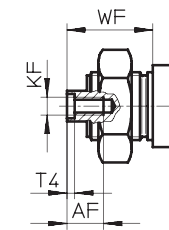
K2 活塞杆加长外螺纹 Extended male piston rod thread



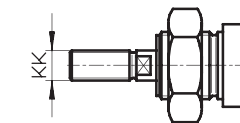
K6 活塞杆缩短外螺纹 Shortened male piston rod thread



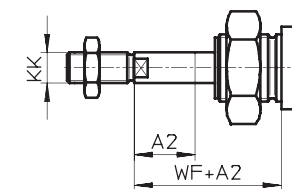
K3 活塞杆内螺纹 Female piston rod thread



K5 特殊活塞杆螺纹 Special piston rod thread



K8 加长活塞杆 Extended piston rod



Ø [mm]	A1	A2	A3	AM	AF	KF	基本螺纹 Basic thread		T4	WF	特殊螺纹 Special thread			ZM
							基本螺纹 Basic thread	特殊螺纹 Special thread			MQ	MA	MH	
8	15	50	4	12	-	-	M4	-	-	16	62	59.6	61.5	78.4
10				-	-	-	-	59.1	61.8					
12	20	100		16	-	-	M6	-	-	22	72	69.7	72	94
16				-	-	-	-	78	75.7	77.8	100			
20			25	8	20	12	M4	M8	-	2	24	92	90.5	91.5
25	35			22		M6	M10*1.25	M10	2.6	28	97.5	96.5	97.2	125.5



MAL - CM - 20 - 50 - S - LB

型号 Type

MAL	复动型 Mini cylinder double acting
MSAL	单动伸出型 Single acting-push type
MTAL	单动引入型 Single acting-pull type

后盖型式 Back cover type

CA	摆尾型 Pivot type
CM	圆尾型 Round-end type
U	平尾型 Flat-end type

缸径 Bore

行程 Stroke

感应磁石 Magnet

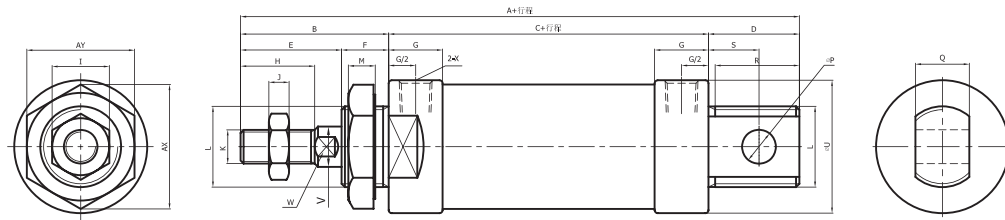
	不附磁石 Without magnet
S	附磁石 With magnet

固定型式 Mounting type

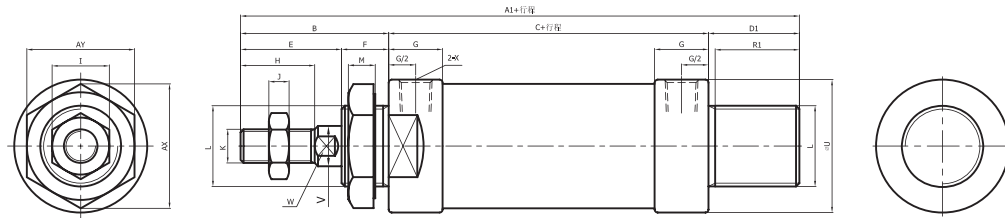
LB	
FA	
SDB	

主要技术参数 General technical data				
缸径 Bore (mm) Ø	20	25	32	40
工作介质 Medium	经过滤的压缩空气，润滑或未润滑 Filtered compressed air, lubricated or unlubricated			
动作形式 Action Form	MAL: 复动型 Double acting type; 其它 Others: 单动型 Single acting			
固定型式 Mounting type	基本型 Basic LB FA SDB			
保证耐压力 Compression Pressure	15 bar			
使用压力范围 Max. Operating Pressure	MAL: 1-9 bar; 其它系列 Others: 2-9 bar			
环境温度 Condition Temperature	-5~70° C			
使用速度范围 Operation Speed Range	MAL: 30~800 mm/s; 其它系列 Others: 50~800 mm/s			
接管口径 Connection	1/8		1/4	

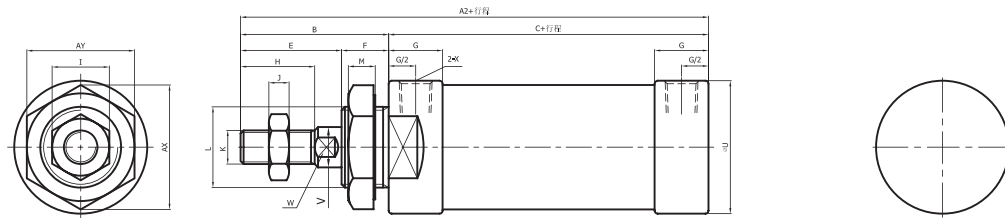
MAL 尺寸图 Dimensions



CM: Round-end type

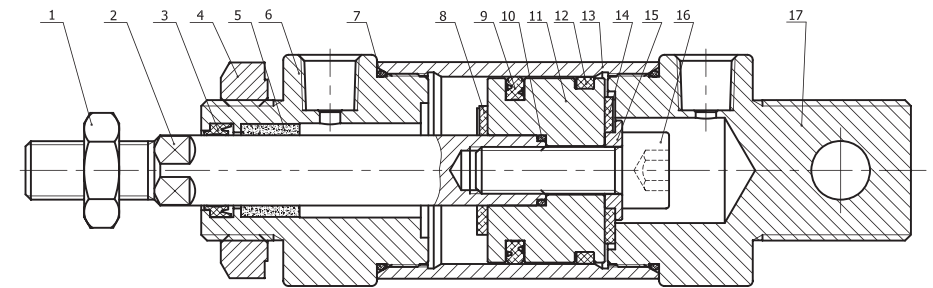


U: Flat-end type



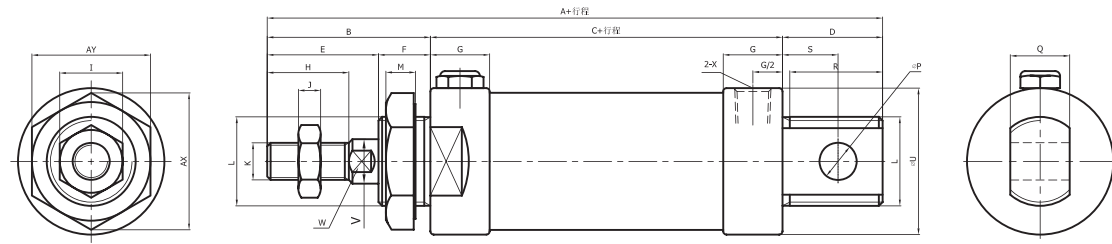
缸径 Bore(mm) Ø	A	A1	A2	B	C	D	D1	E	F	G	H	I	J	K	L	M	P	Q	R	R1	S	U	V	W	X	AX	AY
20	131	122	110	40	70	21	12	28	12	16	20	12	6	M8×1.25	M22×1.5	7	8	16	19	10	12	29	8	6	1/8	33	29
25	135	128	114	44	70	21	14	30	14	16	22	17	6	M10×1.25	M22×1.5	7	8	16	19	12	12	34	10	8	1/8	33	29
32	141	128	114	44	70	27	14	30	14	16	22	17	6	M10×1.25	M24×2.0	8	10	16	25	12	15	39.5	12	10	1/8	37	32
40	165	152	138	46	92	27	14	32	14	22	24	17	7	M12×1.25	M30×2.0	9	12	20	25	12	15	49.5	16	14	1/4	47	41

内部结构图 Inner structure

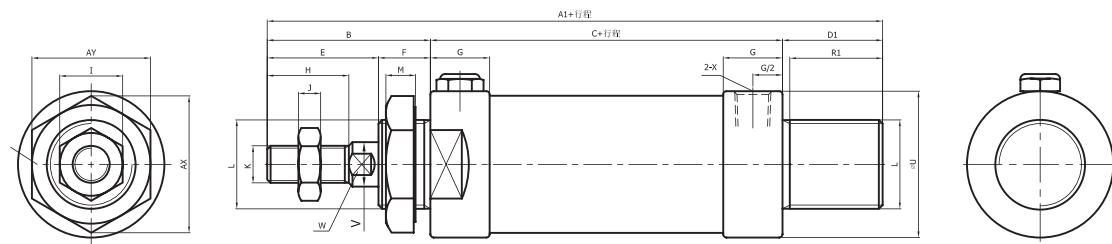


序号 NO.	名称 Item	序号 NO.	名称 Item	序号 NO.	名称 Item
1	螺母 Rod nut	7	管壁O型圈 O-ring	13	铝管 Barrel
2	活塞杆 Piston rod	8	防撞垫片 Bumper	14	防撞垫片 Bumper
3	前盖密封圈 Rod packing	9	活塞密封圈 Piston seal	15	后垫华司 Back washer
4	前盖螺母 Front cover nut	10	活塞杆O型圈 Rod O-ring	16	内六角螺栓 Screw
5	含油轴承 Bushing	11	活塞 Piston	17	后盖 Back cover
6	前盖 Front cover	12	耐磨环 Wearing		

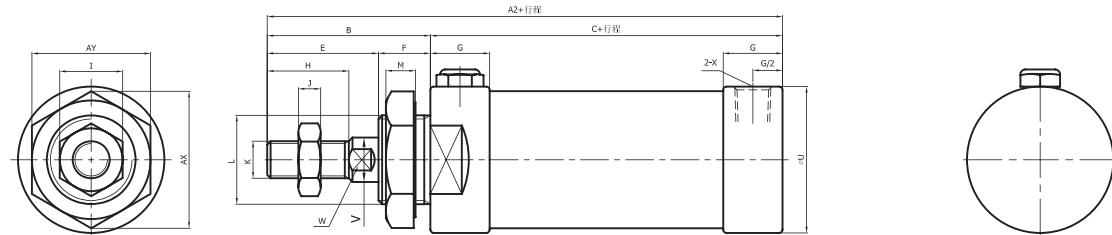
MSAL 尺寸图 Dimensions



CM: Round-end type



U: Flat-end type

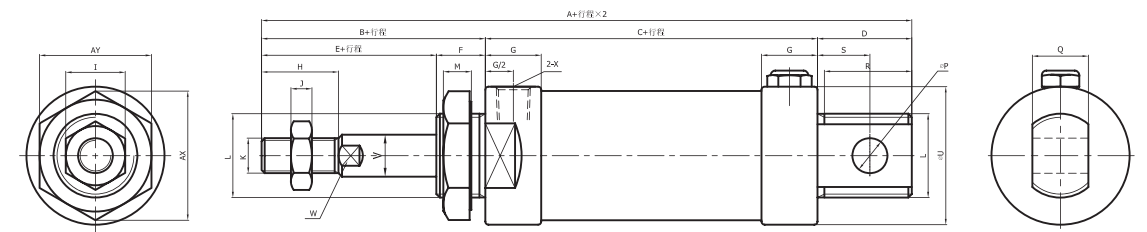


缸径 Bore(mm) Ø	A		A1		A2		B	C		D	D1	E	F	G	H
	0~50	51~100	0~50	51~100	0~50	51~100		0~50	51~100						
20	131	156	122	147	110	135	40	70	95	21	12	28	12	16	20
25	135	160	128	153	114	139	44	70	95	21	14	30	14	16	22
32	141	166	128	153	114	139	44	70	95	27	14	30	14	16	22
40	165	190	152	177	138	163	46	92	117	27	14	32	14	22	24

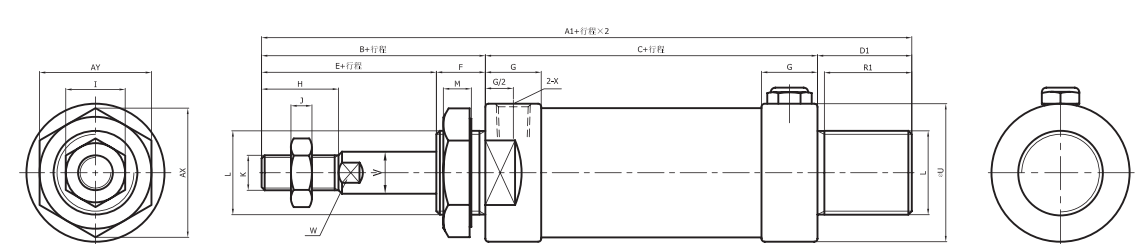
缸径 Bore(mm) Ø	I	J	K	L	M	P	Q	R	R1	S	U	V	W	X	AX	AY
20	12	6	M8×1.25	M22×1.5	7	8	16	19	10	12	29	8	6	1/8	33	29
25	17	6	M10×1.25	M22×1.5	7	8	16	19	12	12	34	10	8	1/8	33	29
32	17	6	M10×1.25	M24×2.0	8	10	16	25	12	15	39.5	12	10	1/8	37	32
40	17	7	M12×1.25	M30×2.0	9	12	20	25	12	15	49.5	16	14	1/4	47	41

MTAL 尺寸图 Dimensions

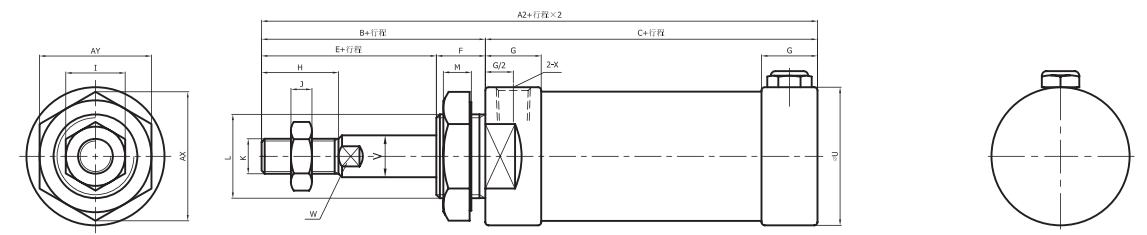
CA: Pivot type



CM: Round-end type



U: Flat-end type

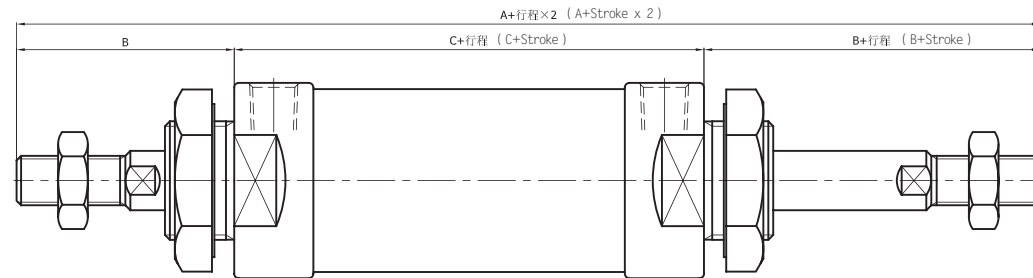


缸径 Bore(mm) Ø	A				A1				A2				B	C			
	0~25	26~50	51~75	76~100	0~25	26~50	51~75	76~100	0~25	26~50	51~75	76~100		0~25	26~50	51~75	76~100
20	146	156	171	181	137	147	162	172	125	135	150	160	40	85	95	110	120
25	150	160	175	185	143	153	168	178	129	139	154	164	44	85	95	110	120
32	156	166	186	196	143	153	173	183	129	139	159	169	44	85	95	115	125
40	180	190	210	220	167	177	197	207	153	163	183	193	46	107	117	137	147

缸径 Bore(mm) Ø	D	D1	E	F	G	H	I	J	K	L	M	P	Q	R	R1	S	U	V	W	X	AX	AY
20	21	12	28	12	16	20	12	6	M8×1.25	M22×1.5	7	8	16	19	10	12	29	8	6	1/8	33	29
25	21	14	30	14	16	22	17	6	M10×1.25	M22×1.5	7	8	16	19	12	12	34	10	8	1/8	33	29
32	27	14	30	14	16	22	17	6	M10×1.25	M24×2.0	8	10	16	25	12	15	39.5	12	10	1/8	37	32
40	27	14	32	14	22	24	17	7	M12×1.25	M30×2.0	9	12	20	25	12	15	49.5	16	14	1/4	47	41

尺寸图-派生型 Dimensions-Variou

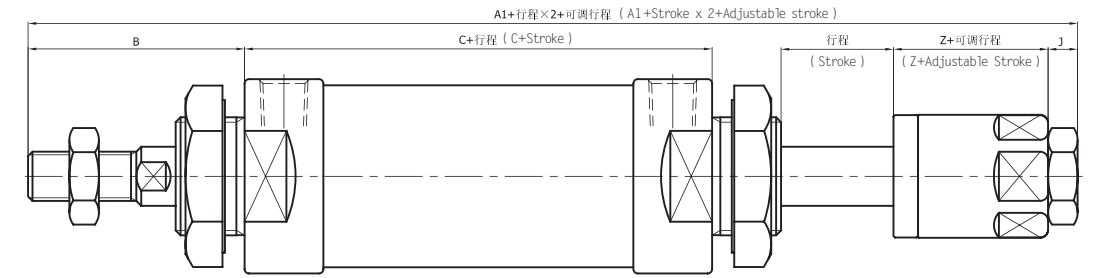
MALD 双轴型 Double rod type



缸径 Bore(mm) Ø	A	B	C
20	150	40	70
25	158	44	70
32	158	44	70
40	184	46	92

尺寸图-派生型 Dimensions-Variou

MALJ 双轴行程可调型 Adjustable stroke type



缸径 Bore(mm) Ø	A	B	C	J	Z
20	147	40	70	6	19
25	155	44	70	6	21
32	155	44	70	6	21
40	180	46	92	7	21