

CUTTER & BLADE

Concrete Cutter	33
Wet type Diamond blade	34
Dust Collecting Type Dry Cutter	35
Dry type Diamond blade	35



Wet type

(MCD-318 • 218 • L14 • 012 • T18H)

Equipment for outstanding functionality



Semi-Auto Drive

Up/Down for blade and Cutting work by handles.



Tacho Hour Meter

(MCD-318 • 218 • T18H)



Electric Start

(MCD-318 • 218)



Manual brake

(MCD-218)



Differential Lock Mechanism

The rear wheels are equipped with a differential lock mechanism for better straight-line stability. (MCD-318•218)



Drain Water Pipe

(MCD-318• 218• L14•T18H)



Lifting Hook

(MCD-318•218•L14•T18H)



Digital Cutting Gauge

Easy to check the cutting depth. (MCD-318)

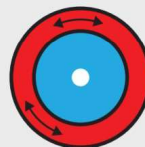


Sprinkling Hose Block

Easy to clean the hose. (MCD-318)

High quality unique to genuine products

Mikasa genuine blades for both of wet and dry cutting are engineered to regulate heat so that they deform less when hot.



When the blade heats up the edge of the blade expands in the direction of the arrows.

Side



Genuine blades by Mikasa have a strong resistance to heat that is hard to deform

The cutting edge undulates

Dry type

(MCD-RY14)

Water-less Dry Cutting and Dust Collecting system



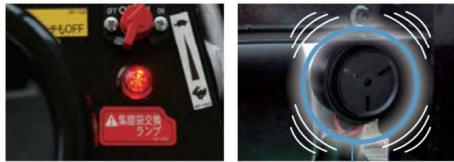
99% of the cutting dust is collected into the Dust Case

Equipment for outstanding functionality

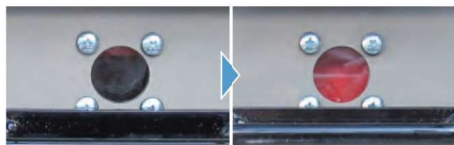


Cutting dust is collected into the dust case.

LED Indicator and Buzzer



LED indicator Buzzer



Level gauge

As soon as the dust case reaches a full tank, you can recognize by LED indicator, buzzer and level gauge.



Road surface following type noise absorbing blade cover

Cutting Line Position



One-Touch Brake

VAS Handle



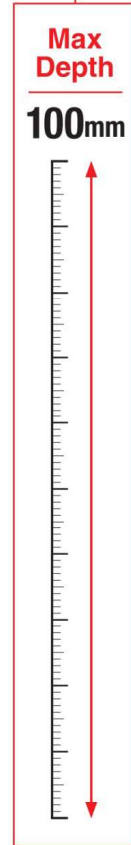
Tacho Hour Meter

Cutting Gauge



Dry Filter

Dry Cut Blade

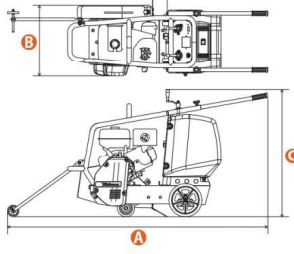


Concrete Cutter

- Easy Brake Setting with Ultra Light Blade Cover
- Cutting gauge in the panel for comfortable depth adjustment
- Large and sleek Water Tank (50L) for easy to check and clean up



NEW
MCD-T18 (131kg)



Cutting Depth
170mm

- Stepless adjustable anti-vibration handle



- Lift handle that automatically locks when the hand is released



- Tacho hour meter essential for managing work and maintenance

- Aluminum die-cast belt cover that efficiently cools the heat generated by high-strength ribbed belts



- Large and sleek 50L water tank

! Point

Easy Brake Setting



- Easily removable Ultra light Blade Cover with disconnected hose



- Easy access from above



- Cutting gauge in the panel allows for comfortable depth adjustment



- Stop switch for stopping the engine in a hurry



- Safe foot-operated parking brake

MCD Specifications

model	weight (kg)	dimensions (mm)	blade size mm (inch)	cutting depth (mm)	arbor size (mm)	adjusting for cutting depth	traveling system	water tank capacity (lts)	power source kW (PS)
MCD-T18H	131	H : 916 W : 509 L : 1,414	356 (14")~ 457 (18")	70~170	27	manual lifting screw system	Hand-push	50	Honda GX390 gasoline max. output 8.7 (11.8)

MCD-218CEH (184kg)



MCD-L14H (100kg)



● Cutting Gauge



MCD Specifications

model	weight (kg)	dimensions (mm)	blade size mm (inch)	cutting depth (mm)	arbor size (mm)	adjusting for cutting depth	traveling system	water tank capacity (lits)	power source kW (PS)
MCD-L14H	100	H : 930 W : 527 L : 1,650	254 (10") ~ 356 (14")	70 ~ 120	27	manual lifting screw system	hand-push	26	Honda GX200 gasoline max. output 4.3 (5.8)
MCD-218CEH	184	H : 981 W : 585 L : 1,990	254 (10") ~ 457 (18")	70 ~ 170			semi-auto drive	45	Honda GX390 gasoline (electric start) max. output 8.7 (11.8)
MCD-318HS	190	H : 971 W : 542 L : 1,984						50	

WET Wet type Diamond blade

MW-DA
For Asphalt
MW-DAC
For Asphalt and Concrete
MW-DC
For Concrete



**Blade MW-DA/DC/DAC:
For Cutting Asphalt and /or Concrete (Deluxe)**

model	blade size (inch)	thickness (mm)	arborsize (mm)
12"MW-DA/DC/DAC	12"	3.0	27
14"MW-DA/DC/DAC	14"		
16"MW-DA/DC/DAC	16"		
18"MW-DA/DC/DAC	18"		

MW-RAC
For Asphalt and Concrete



Blade MW-RAC: For Cutting Asphalt and Concrete (Standard)

model	blade size (inch)	thickness (mm)	arborsize (mm)
12"MW-RAC	12"	3.0	27
14"MW-RAC	14"		
16"MW-RAC	16"		
18"MW-RAC	18"		

MW-HEL
For Asphalt and Concrete



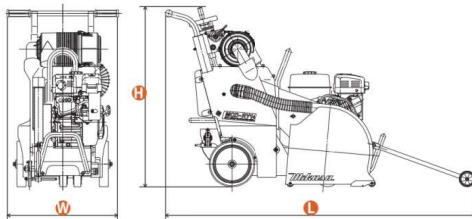
Blade MW-HEL: For Cutting Asphalt and Concrete (Economy)

model	blade size (inch)	thickness (mm)	arborsize (mm)
12"MW-HEL	12"	3.0	27
14"MW-HEL	14"		
16"MW-HEL	16"		
18"MW-HEL	18"		

Dust Collecting Type Dry Cutter



MCD-RY14HS (145kg)



Examples of use

[When using the asphalt blade]

- Cutting the asphalt pavement of sidewalks and ditches for facility construction
- Pipeline construction of sewer pipes
- Section cutting jobs around light poles, guardrails and manholes
- Joint cutting (3-5 cm) in green concrete (within 72 hours after casting for unreinforced concrete)

[When using the concrete blade]

- Facility construction of concrete (unreinforced) warehouses and sidewalks

MCD Specifications

model	weight (kg)	dimensions (mm)	blade size mm (inch)	cutting depth mm (inch)	arbor size (mm)	adjusting for cutting depth	traveling system	power source kW (PS)
MCD-RY14HS	145	H : 970 W : 610 L : 1,679	305 (12") ~ 356 (14")	50 ~ 100	27	manual lifting screw system	hand-push	Honda GX270 gasoline (electric start) max. output 6.3 (8.6)

DRY

Dry type Diamond blade



MD-DA
For Asphalt



MD-DC
For Concrete

Blade MD-DA/DC:

For Cutting Asphalt or Concrete (Dry)

model	blade size (inch)	thickness (mm)	arbor size (mm)
12"MD-DA	12"	3.4	27
14"MD-DA	14"		
12"MD-DC	12"		
14"MD-DC	14"		