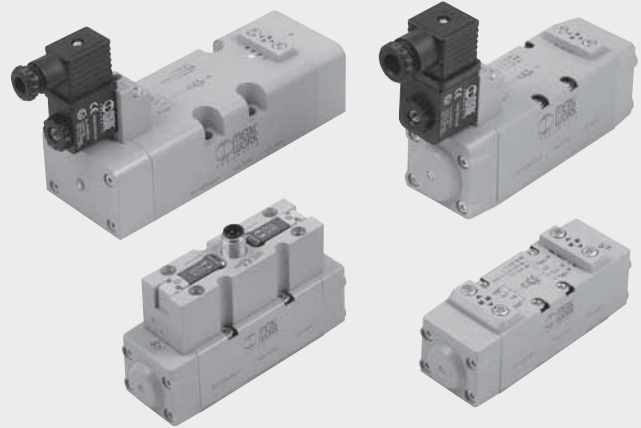


VALVES ISO 5599/1, SERIES IPV-ISV

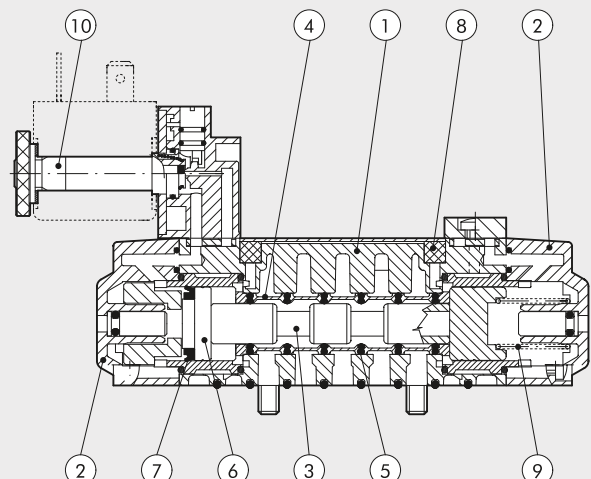
The assembly surface dimensions of ISO1, ISO2 and ISO 3 valves are to ISO5599-1. They are available in the 5-way versions with 2 and 3 positions and with pneumatic or solenoid actuation.



TECHNICAL DATA	ISO 1	ISO 2	ISO 3
Fluid	Filtered air without lubrication; lubrication, if used, must be continuous		
Operating pressure: bar	Vacuum to 10 pneumatic / 2.5 to 10 solenoid/pneumatic		
☑ monostable	Vacuum to 10 pneumatic / 1 to 10 solenoid/pneumatic		
☑ bistable	Vacuum to 10		
☑ pilot-assisted	2.5		
Minimum pilot pressure bar	-10 to +60		
Operating temperature range °C	7.5	12	15
Nominal diameter mm	250	657.14	971.43
Conductance C NI/min ☒ bar	0.36	0.25	0.43
Critical ratio b bar/bar	700	1800	3200
Flow rate at 6 bar 0.5 bar NI/min	1100	2700	4600
Flow rate at 6 bar 1 bar NI/min	In any position (vertical assembly is not recommended for bistable valves subjected to vibration)		
Installation	On single and manifold bases according to ISO 5599/1		
Assembly	ISO and UNI FD 22		
Recommended lubricant	to CNOMO/in-line pilot / M12 to CNOMO		
Solenoid pilot	Bistable on solenoid pilot		
Manual	Monostable on valve body		
Maximum coil nut torque Nm	1		
Compatibility with oils	Please refer to page 6-7 of the technical documentation		

COMPONENTS

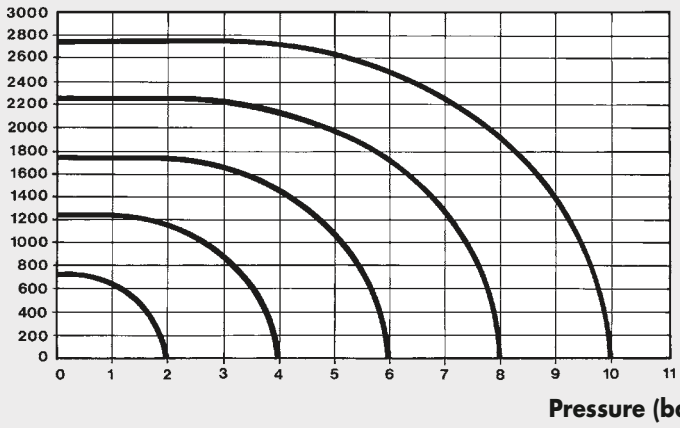
- ☒ VALVE BODY: Aluminium
- ☒ END CAP: HOSTAFORM
- ☒ SPOOL: chemically nickel-plated aluminium
- ☒ DISTANCE PLATES: plastic
- ☒ GASKETS: NBR
- ☒ PISTONS: HOSTAFORM
- ☒ PISTON GASKET: NBR
- ☒ FILTER: sintered bronze
- ☒ SPRINGS: special steel
- ☒ OPERATOR: Brass pipe – Stainless steel core



FLOW CHART

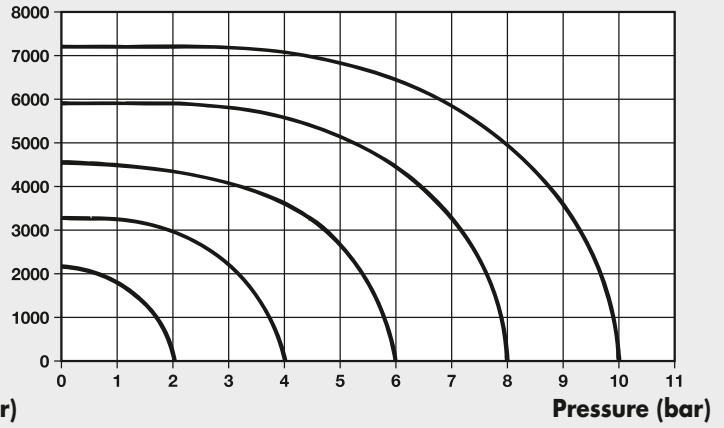
ISO 1

Flow rates (Nl/min)



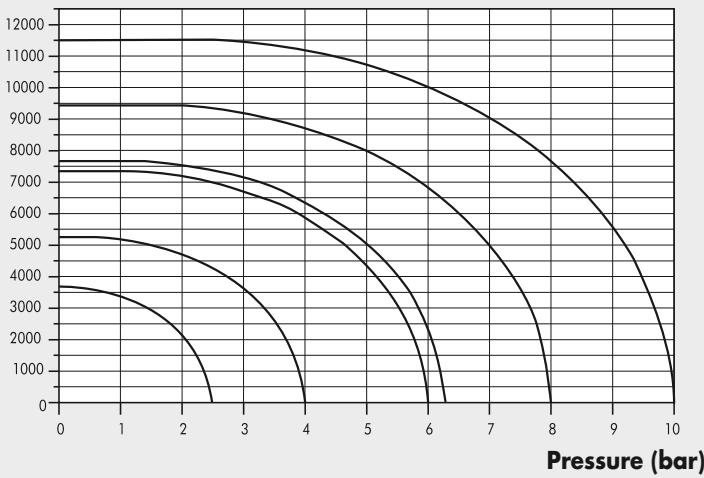
ISO 2

Flow rates (Nl/min)



ISO 3

Flow rates (Nl/min)



SYNOPTIC, SIZES AND VERSIONS

I P V		5		5		P N		S		O O	
FAMILY		DIMENSIONS		FUNCTION		OPERATORS 14		RESETTING (12)		FURTHER DETAILS	
IPV	ISO pneumatic	5	ISO 1	5	5/2	PN	pneumatic	S	mechanical springs	OO	5/2
ISV	ISO solenoid/pneumatic	6	ISO 2	6	5/3	SO	solenoid/pneumatic	B	bistable	CC	closed centres
		7	ISO 3			SE	electric pilot-assisted	D	differential	OC	open centres
						4DO	solenoid/pneumatic in line			PC	pressure centres
						4DE	solenoid assisted in line				
						DKO	M12 solenoid/pneumatic				
						DKE	M12 solenoid assisted				

☒ Only for ISO 1
☒ Only for ISO 1 and ISO 2

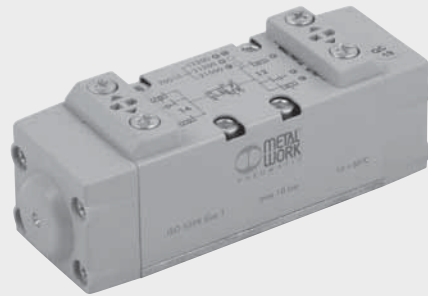
www.famcocorp.com
E-mail: info@famcocorp.com
@famco_group

Tel: +91-48000049
Fax: +91-44994642

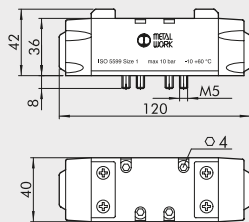
تهران، کیلومتر ۲۱ بزرگراه لشگری (جاده مخصوص کرج)
روبروی پالایشگاه نفت پارس، پلاک ۱۲

VALVES ISO 5599/1, PNEUMATIC SERIES IPV

TECHNICAL DATA		ISO 1	ISO 2	ISO 3
Operating pressure	bar	Vacuum to 10		
Minimum operation pressure:				
☑ monostable	bar	2.5		
☑ bistable	bar	1		
Operating temperature range	°C	-10° to +60		
Nominal diameter	mm	7.5	12	15
Conductance C	NI/min ☑ bar	250	657.14	971.43
Critical ratio b	bar/bar	0.36	0.25	0.43
Flow rate at 6 bar ☑ 0.5 bar	NI/min	700	1800	3200
Flow rate at 6 bar ☑ 1 bar	NI/min	1100	2700	4600
Response times at 6 Bar:				
☑ monostable	ms	12	24	35
☑ bistable	ms	20	30	45
Repositioning response times at 6 Bar:				
☑ monostable	ms	30	43	55
☑ bistable	ms	20	30	45
Manual		monostable on valve body		

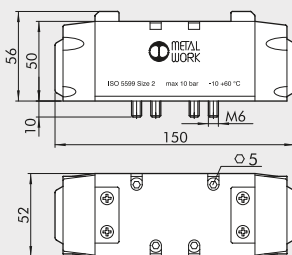


PNEUMATIC ACTUATION ISO 1



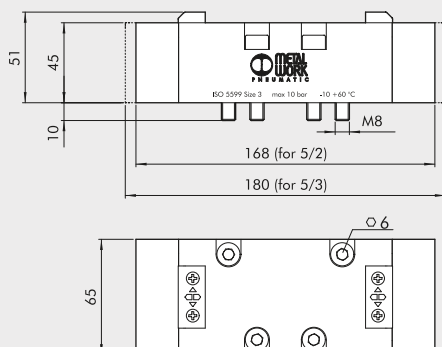
Symbol	Code	Abbrev.	Weight ☑g
	7051011100	IPV 55 PNS OO	310
	7051011200	IPV 55 PNB OO	310
	7051011300	IPV 55 PND OO	310
	7051012100	IPV 56 PNS CC	310
	7051012200	IPV 56 PNS OC	310
	7051012300	IPV 56 PNS PC	310

PNEUMATIC ACTUATION ISO 2



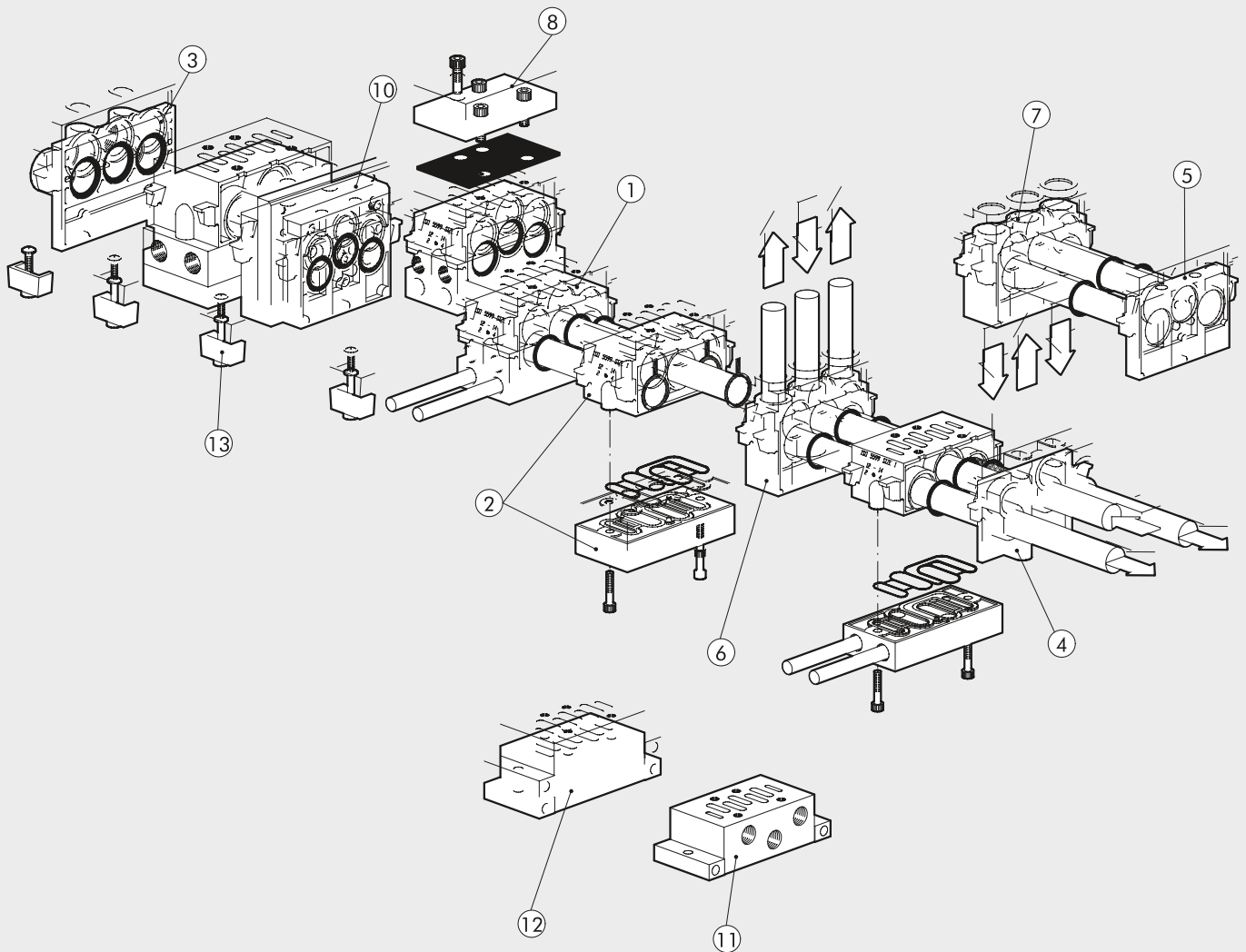
Symbol	Code	Abbrev.	Weight ☑g
	7052011100	IPV 65 PNS OO	705
	7052011200	IPV 65 PNB OO	705
	7052011300	IPV 65 PND OO	705
	7052012100	IPV 66 PNS CC	705
	7052012200	IPV 66 PNS OC	705
	7052012300	IPV 66 PNS PC	705

PNEUMATIC ACTUATION ISO 3



Symbol	Code	Abbrev.	Weight ☑g
	7056011100	IPV 75 PNS OO	1175
	7056011200	IPV 75 PNB OO	1175
	7056011300	IPV 75 PND OO	1175
	7056012100	IPV 76 PNS CC	1290
	7056012200	IPV 76 PNS OC	1290
	7056012300	IPV 76 PNS PC	1290

**BASES ISO 5599/1 FOR VALVES
SERIES IPV-ISV SIZE 1 AND 2**

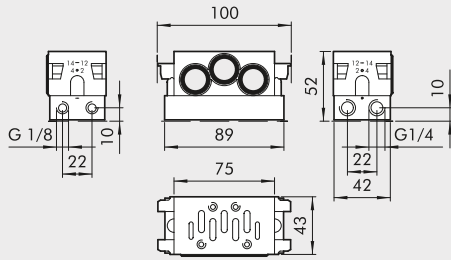


BASES ISO 5599/1 FOR VALVES SERIES IPV-ISV SIZE 1 AND 2 DISTRIBUTORS

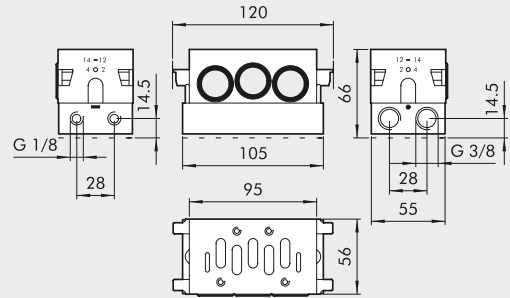
Reference	Code ISO 1	Code ISO 2	Description
☑	0228000150	0228001150	Manifold base - side ports
☑	0228000155	0228001155	Manifold base with bottom ports
☑	0228000200	0228001200	Input end plate
☑	0228000201	0228001201	Additional input end plate
☑	0228000210	0228001210	Blind end plate
☑	0228000300	0228001300	Intermediate - top ports
☑	0228000301	0228001301	Intermediate - back ports
☑	0228000500	0228001500	Blanking plate
☑	0228000400	0228001400	Intermediate diaphragm
☑	0228000600	-	ISO 1/ISO 2 port adapter
☑	0228000100	0228001100	Individual base - side ports
☑	0228000110	0228001110	Base - bottom ports
☑	0228000700	0228001700	Assembly kit

☒ **MANIFOLD BASE, SIDE PORTS**

ISO 1



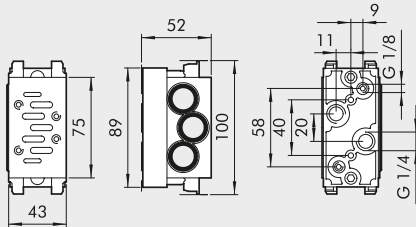
ISO 2



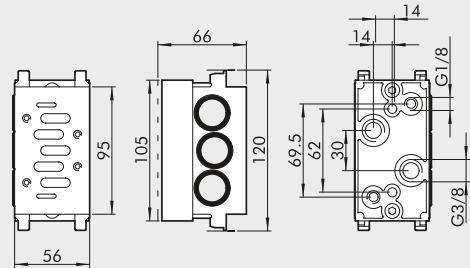
Code	Description	Weight (kg)
0228000150	Manifold base, side ports, ISO 1	131
0228001150	Manifold base, side ports, ISO 2	314

☒ **MANIFOLD BASE, BOTTOM PORTS**

ISO 1



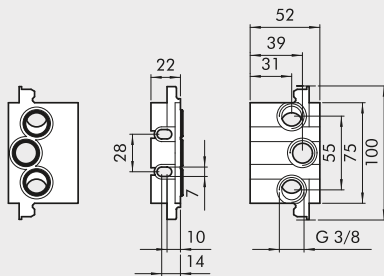
ISO 2



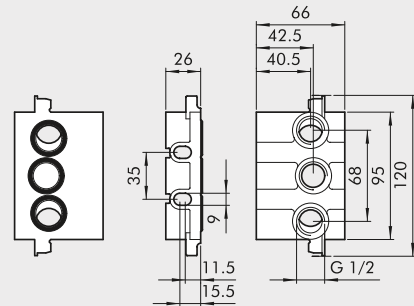
Code	Description	Weight (kg)
0228000155	Manifold base, bottom ports, ISO 1	314
0228001155	Manifold base, bottom ports, ISO 2	505

☒ **INPUT END PLATE**

ISO 1



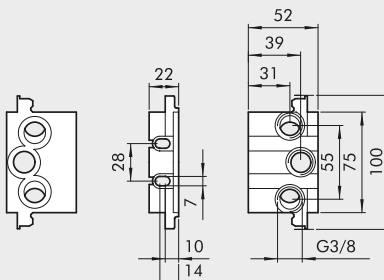
ISO 2



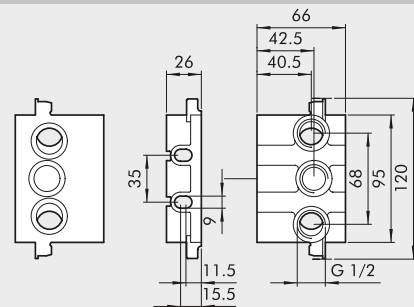
Code	Description	Weight (kg)
0228000200	Input end plate ISO 1	129
0228001200	Input end plate ISO 2	206

☒ **ADDITIONAL INPUT END PLATE**

ISO 1



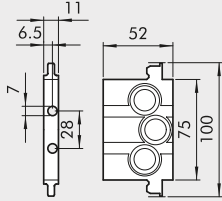
ISO 2



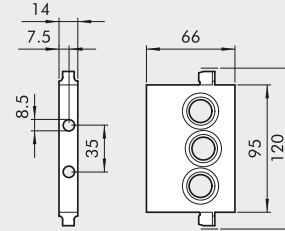
Code	Description	Weight (kg)
0228000201	Additional input end plate, ISO 1	84
0228001201	Additional input end plate, ISO 2	162

BLIND END PLATE

ISO 1



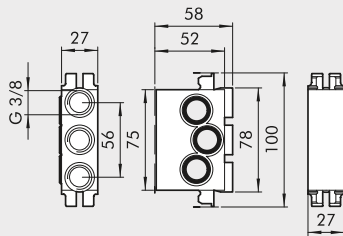
ISO 2



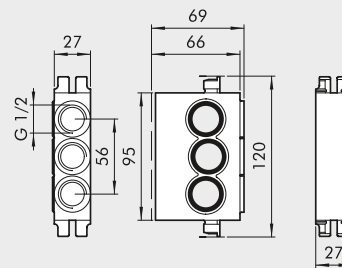
Code	Description	Weight $\times g$
0228000210	Blind end plate, ISO 1	79
0228001210	Blind end plate, ISO 2	130

INTERMEDIATE TOP PORTS

ISO 1



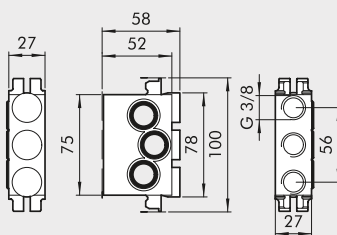
ISO 2



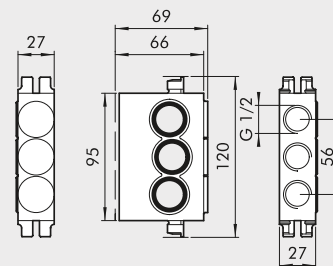
Code	Description	Weight $\times g$
0228000300	Intermediate top ports, ISO 1	235
0228001300	Intermediate top ports, ISO 2	299

INTERMEDIATE REAR PORTS

ISO 1



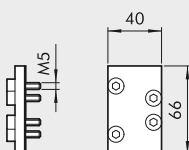
ISO 2



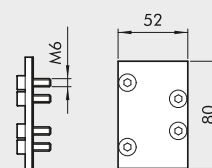
Code	Description	Weight $\times g$
0228000301	Intermediate rear ports, ISO 1	237
0228001301	Intermediate rear ports, ISO 2	299

BLANKING PLATE

ISO 1

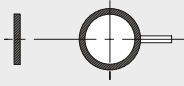


ISO 2



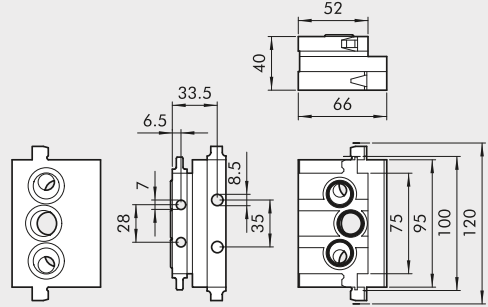
Code	Description	Weight $\times g$
0228000500	Blanking plate, ISO 1	47
0228001500	Blanking plate, ISO 2	96

INTERMEDIATE DIAPHRAGM



Code	Description	Weight [g]
0228000400	Intermediate diaphragm, ISO 1	4
0228001400	Intermediate diaphragm, ISO 2	7

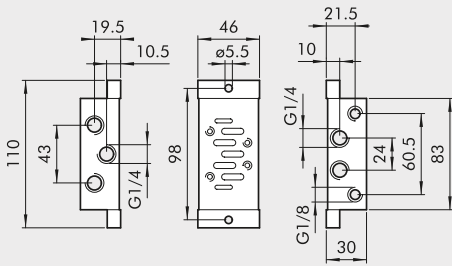
DIMENSION ADAPTER



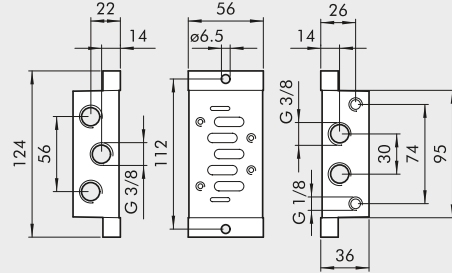
Code	Description	Weight [g]
0228000600	Dimension adapter ISO 1-2	454

INDIVIDUAL BASE SIDE PORTS

ISO 1



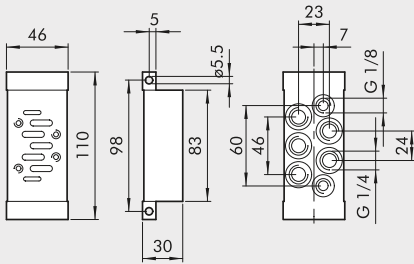
ISO 2



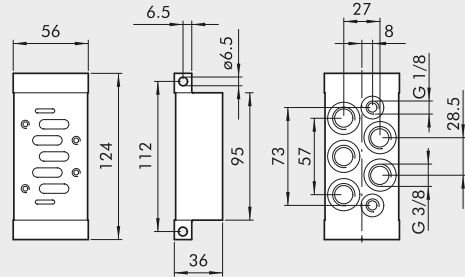
Code	Description	Weight [g]
0228000100	Individual base side ports, ISO 1	165
0228001100	Individual base side ports, ISO 2	257

INDIVIDUAL BASE BOTTOM PORTS

ISO 1



ISO 2



Code	Description	Weight [g]
0228000110	Individual base bottom ports, ISO 1	197
0228001110	Individual base bottom ports, ISO 2	304

ASSEMBLY KIT

ISO 1



ISO 2



Code	Description	Weight [g]
0228000700	Assembly kit, ISO 1	47
0228001700	Assembly kit, ISO 2	47