

mANT30 series

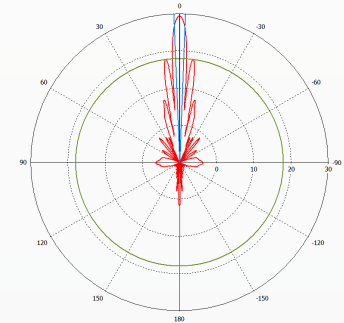
mANT30 is a professional class 5 GHz 30dBi dish antenna, built to the highest industry standards. Built to seamlessly accommodate our Basebox series products, but can be used for any pole mounted wireless device due to the adequate length of the included FlexGuide cable.

Two antennas are available, with a **standard type mount (MTAD-5G-30D3)**, and with a **precision alignment mount (MTAD-5G-30D3-PA)**. The antennas come packaged with all necessary accessories and cables.

Electrical Specifications

Frequency Range	4.7-5.875 GHz
Gain	30 dBi typically
Polarization	Dual (Vertical and Horizontal)
3dB Beamwidth	+/-2.5 deg
Standards	Complies with EN 302 326 DN1, DN2, DN3, DN5
VSWR	≤ 1.4 typ, ≤ 1.8 max
Port to Port Isolation	>40dB min
Front-to-Back Ratio	>30 dB
Cross Polarization	>40 dB
Power Rating	100 watts
Impedance	50 ohms
Elevation adjustment range	+/- 20 deg (MTAD-5G-30D3), +/- 15 deg (MTAD-5G-30D-PA)

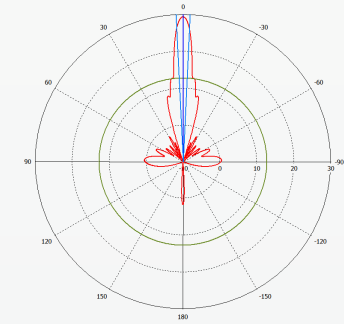
Horizontal polarization



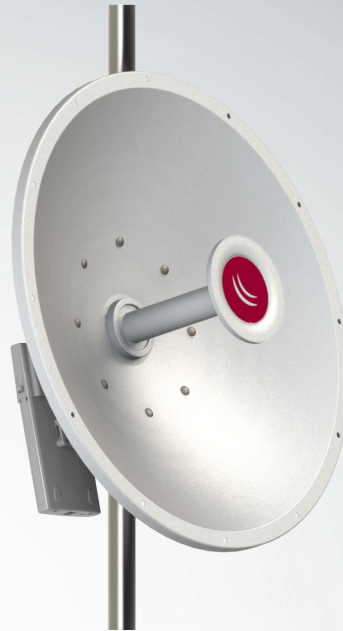
Physical/Environmental Specifications

Diameter x Depth	70 x 45cm (27.5 x 17.8in)
Weight neto	5.7kg (12.6 lbs) PA and 4.8kg (10.7 lbs) standard version
Reflector	Aluminum
Outdoor Rating	ETSI EN 300 019-2-4
Wind Survivability	201kph (125mph)
Wind Load (125 mph)	181.4kg (400 lbs)
Operating Temperature	-50°C to 80°C(-49°F to 158°F)
Pole Mount Diameter Range	(MTAD-5G-30D3): 3 to 7cm (1.2 to 2.75in) (MTAD-5G-30D-PA): 3 to 10cm (1.2 to 3.9in)
Connector (2)	RP-SMA Female (outside thread)
Packaged size	73x73x20cm (29x29x8in)
Packaged weight	(MTAD-5G-30D3): 7.5 kg (16.5 lbs), (MTAD-5G-30D3-PA): 8.4 kg (18.5)
Compatible with	Can directly mount Basebox and other future RouterBOARD devices, or accept any pole-mounted device
Package includes	FlexGuide RPSMA RF Cables (RP-SMA-male to RP-SMA-male) x 2pcs; Bracket for mounting BASEBOX series radio; Self-Bonding Tape for insulating the RF cables x 2 slices; Precise alignment mechanisms (PA Version only)

Vertical polarization



MTAD-5G-30D3
(With standard type mount)



MTAD-5G-30D3-PA
(With precision alignment mount)

FlexGuide



Note: Basebox radio not included, available separately.