

SXT Lite5

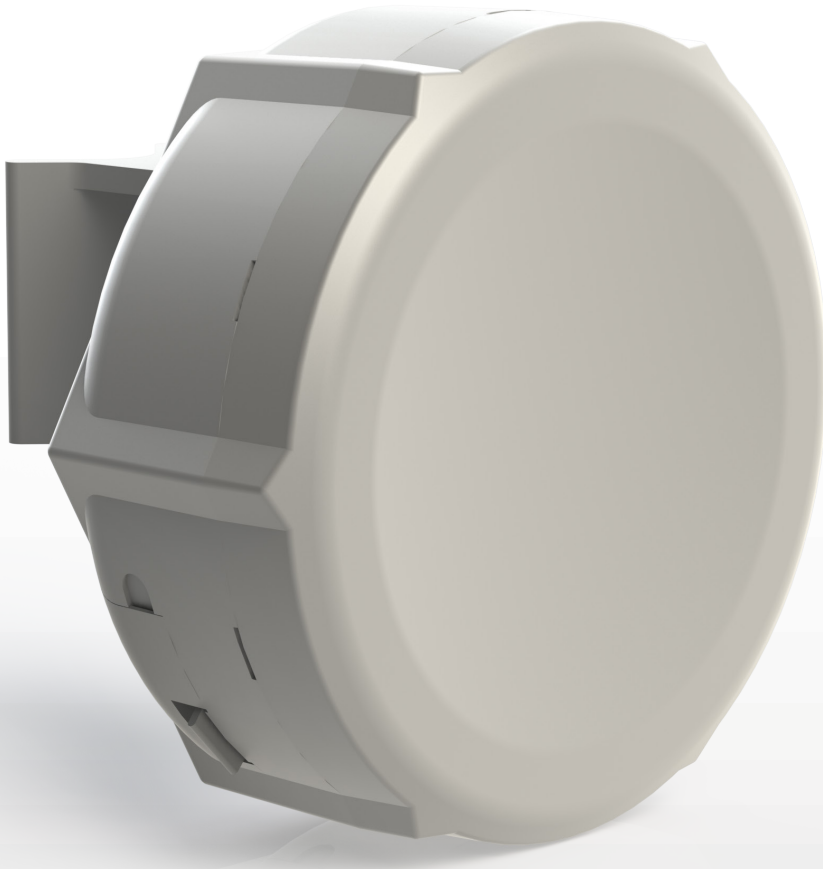


Our best price/performance 5Ghz CPE. The SXT Lite5 (product code RBSXT5nDr2), 5Ghz 16dBi integrated antenna with 600MHz CPU, 64MB RAM and RouterOS L3 installed.

SXT Lite5 is a low cost, high transmit power 5GHz outdoor wireless device. It can be used for point to point links or as a CPE for point to multipoint installations.

Model	RBSXT5nDr2
CPU	Atheros AR9344 600MHz CPU
Memory	64MB DDR2 SDRAM onboard memory
Ethernet	One 10/100 Ethernet port, L2MTU frame size up to 4076
Wireless cards	Onboard dual chain 5GHz 802.11a/n Atheros wireless module; 10kV ESD protection on each RF port
Extras	Reset switch, buzzer
LEDs	Power LED, Ethernet LED, 5 wireless signal LED
Power options	Power over Ethernet: 8-30V DC Packaged with 24V DC 0.38A power adapter and passive PoE injector
Dimensions	140x140x56mm. Weight without packaging, adapters and cables: 265g
Power consumption	Up to 8W
Operating Temp	-30C .. +80C
OS	MikroTik RouterOS, Level3 license
Package contains	one SXT Lite5 unit, PoE injector, 24V power adapter, mounting bracket, metallic mounting loop.
Certifications	FCC, CE, ROHS

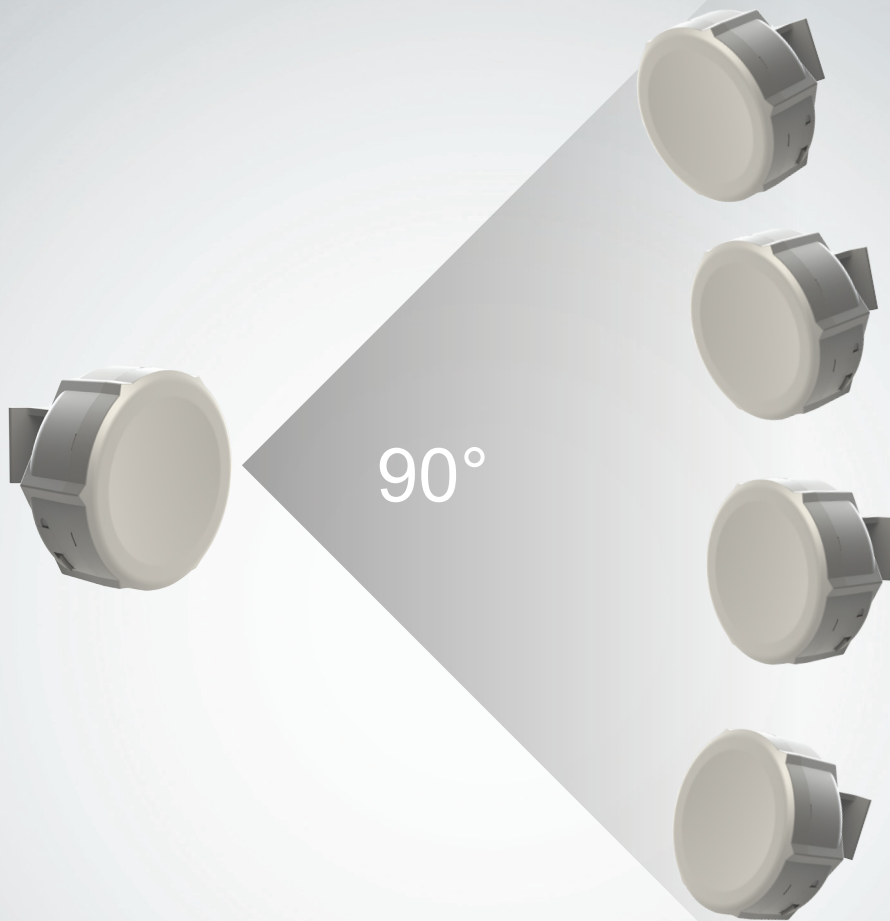
Antenna	Dual polarization 5GHz antenna, 16dBi, -35 dB port to port isolation
RX sensitivity	802.11a: -95 dBm @ 6Mbps to -80 dBm @ 54 Mbps 802.11n: -95 dBm @ MCS0 20MHz to -77 dBm @ MCS7 40MHz
TX power	802.11a: 27dBm @ 6Mbps to 23Bm @ 54 Mbps 802.11n: 27dBm @ MCS0/8 to 22dBm @ MCS7/15
Modulations	OFDM: BPSK, QPSK, 16 QAM, 64QAM DSSS: DBPSK, DQPSK, CCK



SXT SA

SXTG-5HPnD-SAr2 is a low cost, high speed 5GHz outdoor wireless sector access point. It has a 90 degree antenna to provide a wider coverage than our previous SXT units.

Complete with a ready to mount enclosure and built-in 14dBi antenna, the package contains everything you need to set it up in a matter of minutes. The inside of the case is covered in special shielding to improve operation in high interference areas and antenna front to back ratio.



24V 0.38A Adapter



Mounting Ring



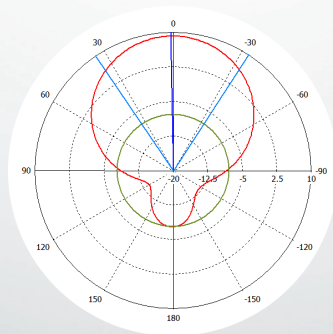
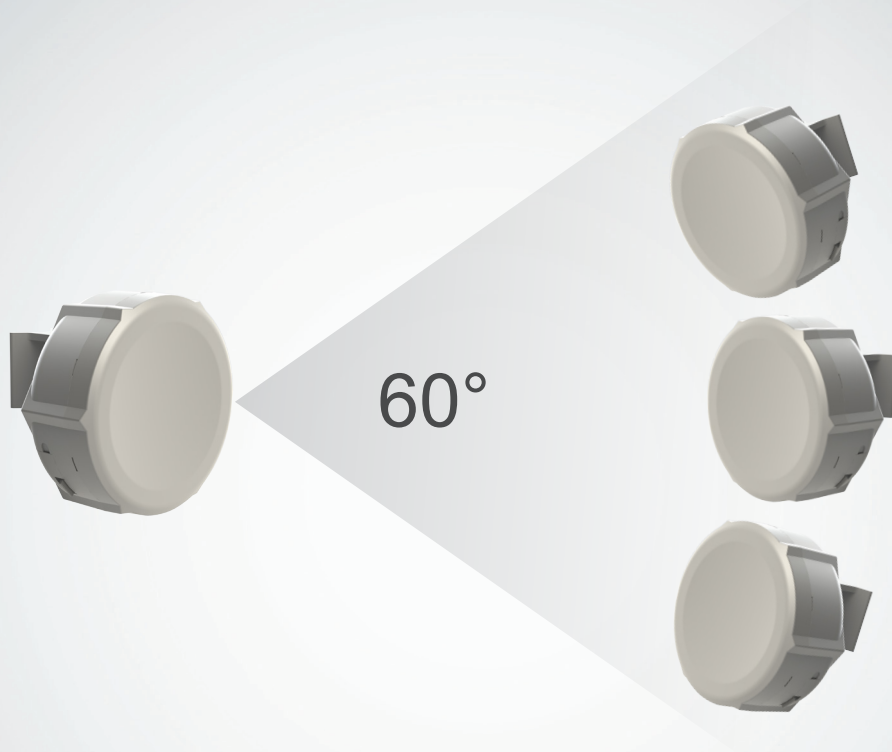
Pole mounting bracket



Gigabit PoE injector

Model	RBSXTG-5HPnD-SAr2
CPU	AR9344-BC2A 600MHz
Memory	64MB DDR2
Ethernet	1x 10/100/1000 Gigabit
Wireless cards	Onboard dual chain 5GHz 802.11a/n AR9344-BC2A wireless module; 10kV ESD protection on each RF port
Frequency range	4920-5920MHz, Operating range limited by Country Regulations
Extras	Reset switch, beeper, USB 2.0 port, voltage and temperature monitors
LEDs	Power LED, Ethernet LED, 5 wireless signal LED
Power options	Power over Ethernet: 8-30V DC Packaged with 24V DC 0.8A power adapter and passive PoE injector
Dimensions	140x140x56mm. Weight without packaging, adapters and cables: 265g
Max consumption	11W at 24V
Operating Temp	-30C .. +80C
OS	Level4 AP license
Package contains	SXT wireless device with integrated antenna, pole mounting bracket, mounting ring, Gigabit PoE injector, power adapter, quick setup guide
Certifications	FCC, CE, ROHS

TX/RX at MCS0	30dBm / -95dBm
TX/RX at MCS7	26dBm / -73dBm
TX/RX at 6Mbit	30dBm / -96dBm
TX/RX at 54Mbit	27dBm / -80dBm
Antenna	Dual pol. 90 deg, -35dB port to port isolation, 14dBi gain



Approximately 60° beamwidth in all polarizations

SXT 2

SXT is a low cost, high speed 2GHz outdoor wireless device, now also available as a high power Gigabit, or as a low cost Lite version. SXT can be used for point to point links, as a CPE for point to multipoint installations or even as an AP/Sector (G model) because of it's wide beamwidth antenna.

Complete with a ready to mount enclosure and built-in 10dBi antenna, the package contains everything you need to set it up in a matter of minutes.

Model	SXT 2	SXT Lite2
Product code	RBSXTG2HnD	RBSXT2nDr2
CPU	AR9344 600MHz	
Memory	64MB RAM	
Ethernet	10/100/1000 (Gigabit) Ethernet port L2MTU frame size up to 4076	10/100 Ethernet port
Wireless	Onboard dual chain 2GHz 802.11b/g/n. 10kV ESD protection on each RF port	
Wireless regulations	Specific frequency range may be limited by country regulations	
Extras	Reset switch, beeper, voltage and temperature monitors	Reset switch, beeper
LEDs	Power LED, Ethernet LED, 5 wireless signal LED	
Power input	PoE in: 8-30V DC. Packaged with 24V PSU and passive PoE injector	
Dimensions	140x140x56mm	
Power consumption	Up to 7W	Up to 8W
Operating temp.	-40°C .. +70°C tested	
License	Level 4 license (CPE, PtP or AP as sector)	Level 3 license (CPE or PtP modes)
Package contains	SXT wireless device with integrated antenna, pole mounting bracket, mounting ring, PoE injector, 24V 0.8A power adapter (SXT 2), 24V 0.38A power adapter (SXT Lite2), quick setup guide	
Certifications	FCC, CE, ROHS	

	SXT 2	SXT Lite2
TX/RX at MCS0	32dBm / -95dBm	27dBm / -95dBm
TX/RX at MCS7	25dBm / -74dBm	22dBm / -77dBm
TX/RX at 6Mbit	32dBm / -96dBm	27dBm / -95dBm
TX/RX at 54Mbit	29dBm / -80dBm	23dBm / -80dBm
Antenna	Dual polarization 2GHz antenna, 10dBi, -18 dB port to port isolation, Beam-Width: H-Plane, E-Plane typ. 60°	



24V 0.38A Adapter



Mounting ring



Pole mounting bracket



PoE injector

FAMCO
www.famcocorp.com