

Magnetic Drive Pumps

MP-025A/B

MP-045A/B

MP-055A/B

MP-070A/B



MP-025A/B

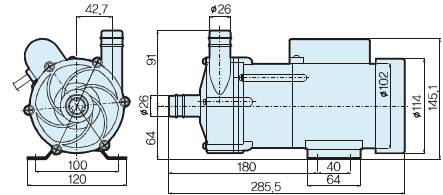
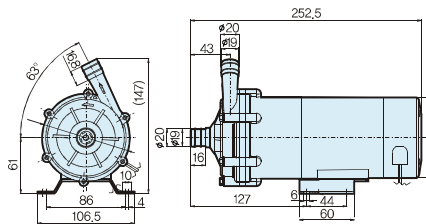
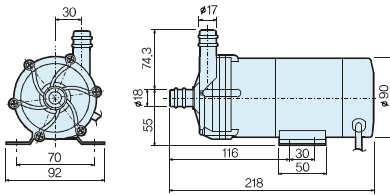
MP-055A/B

MP-070A/B

DIMENSIONS ▾

DIMENSIONS ▾

DIMENSIONS ▾



PERFORMANCE CURVE ▾

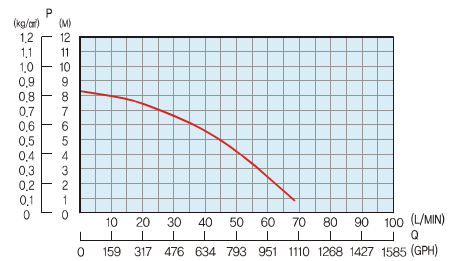
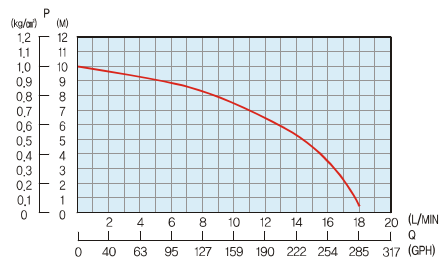
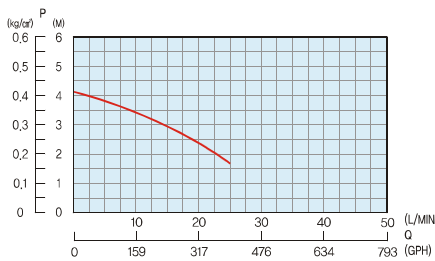
PERFORMANCE CURVE ▾

PERFORMANCE CURVE ▾

ROOM TEMP : 24°C, WATER TEMP : 24°C,
POWER SUPPLY : AC 120V 60Hz, AC 220V 60Hz

ROOM TEMP : 24°C, WATER TEMP : 24°C,
POWER SUPPLY : AC 120V 60Hz, AC 220V 60Hz

ROOM TEMP : 24°C, WATER TEMP : 24°C,
POWER SUPPLY : AC 120V 60Hz, AC 220V 60Hz



NOTE : The performance illustrated is based on pumping water at ambient temperature. / Specifications and dimensions are subject to change upon your requests.

SPECIFICATIONS

ITEM	MODEL	MP-025A/B	MP-045A/B	MP-055A/B	MP-070A/B
Power Supply		AC120V/220V,60Hz	AC120V/220V,60Hz	AC120V/220V,60Hz	AC120V/220V,60Hz
Input		41W/39W	70W/64W	103W/93W	150W/145W
Maximum Head		4.0M(13.1ft)	4.5M(14.8ft)	10M(32.8ft)	8.0M(26.2ft)
Maximum Capacity		24 l /min (380GPH)	44 l /min (697GPH)	19 l /min (301GPH)	70 l /min (380GPH)
Water Temperature		0°C ~ 80°C	0°C ~ 80°C	0°C ~ 80°C	0°C ~ 80°C
Hose Connected[mm]	Inlet	Ø18	Ø20	Ø20	Ø26
	Outlet	Ø17	Ø20	Ø20	Ø26
Screw Connected	Inlet	PF 3/4"	PF 3/4"	-	PF 1"
	Outlet	PF 3/4"	PF 3/4"	-	PF 1"
Dimension[mm]		218*92*129.3	258*120*136.5	252.5*106.5*147	285.5*120*155