

SPA-23.5x

Single Polarization Broadband Parabolic Antenna

Key Features :

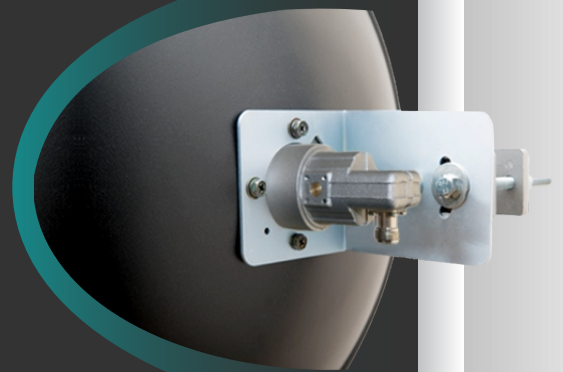
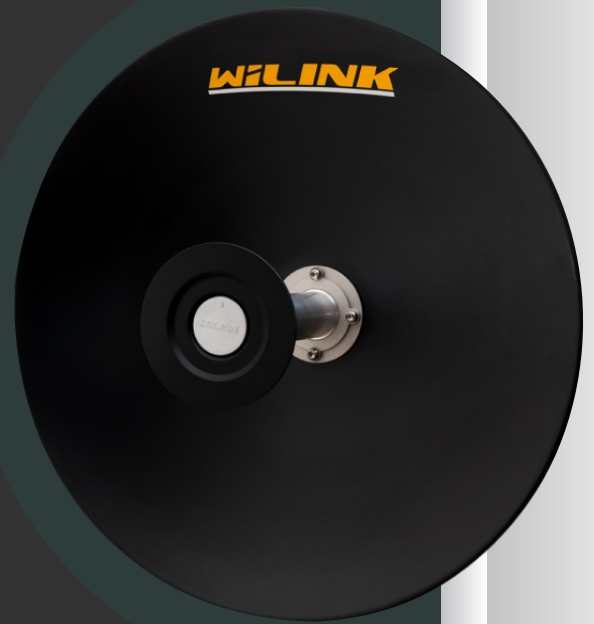
- Light weight
- Robust Structure
- Easy Installation
- Precise alignment

Applications :

- Commercial and military applications
- Point-to-point and point-to-multipoint topologies

Description :

WiLINK is a leading broadband antenna brand manufactured by Pionaria Ltd. for telecom, industrial and military applications with an emphasis on the 5GHz ISM band. Since their introduction in 2006, WiLINK antennas have undergone a continuous optimization process by a dedicated R&D team of highly qualified and experienced experts resulting in the production of a wide range of standard and high performance broadband antennas with best-in-class electromagnetic parameters.



SPA-23.5x

Single Polarization Broadband Parabolic Antenna

Electromagnetic Parameters

| | |
|---------------------|-----------------|
| Frequency Range | 4.8-6.2 GHz |
| Gain | 23.2 dBi |
| Polarization | Linear (V or H) |
| 3db Beamwidth | 8.9° |
| XPD | 26 dB |
| F/B Ratio | 32 dB |
| VSWR | 1.4:1 |
| Impedance | 50 Ω |
| Maximum Input Power | 100 W |
| Connector Type | N-Female |

Mechanical Parameters

| | |
|-----------------------------|------------------------------|
| Diameter | 38 cm |
| Weight | 2.3 kg |
| Shipping Dim. (L x W x H) | 47 x 47 x 25 cm ³ |
| Wind Load | 200 km/h |
| Dish Material | Aluminium Alloy |

SPA-23.5x-D

Dual Polarization Broadband Parabolic Antenna

Key Features :

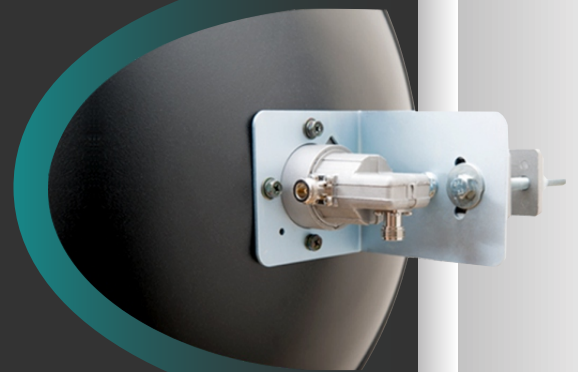
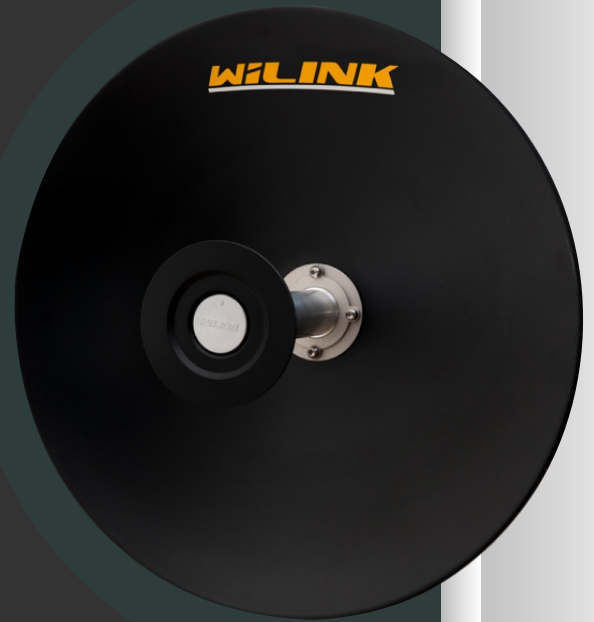
- Light weight
- Robust Structure
- Easy Installation
- Precise alignment

Applications :

- Commercial and military applications
- Point-to-point and point-to-multipoint topologies

Description :

WiLINK is a leading broadband antenna brand manufactured by Pionaria Ltd. for telecom, industrial and military applications with an emphasis on the 5GHz ISM band. Since their introduction in 2006, WiLINK antennas have undergone a continuous optimization process by a dedicated R&D team of highly qualified and experienced experts resulting in the production of a wide range of standard and high performance broadband antennas with best-in-class electromagnetic parameters.



SPA-23.5x-D

Dual Polarization Broadband Parabolic Antenna

Electromagnetic Parameters

| | |
|------------------------|--------------|
| Frequency Range | 4.8-6.2 GHz |
| Gain | 23.2 dBi |
| Polarization | Linear (V&H) |
| 3db Beamwidth | 8.9° |
| XPD | 26 dB |
| F/B Ratio | 32 dB |
| Port-To-Port Isolation | 38 dB |
| VSWR | 1.4:1 |
| Impedance | 50 Ω |
| Maximum Input Power | 100 W |
| Connector Type | N-Female |

Mechanical Parameters

| | |
|-----------------------------|------------------------------|
| Diameter | 38 cm |
| Weight | 2.3 kg |
| Shipping Dim. (L x W x H) | 47 x 47 x 25 cm ³ |
| Wind Load | 200 km/h |
| Dish Material | Aluminium Alloy |

SPA-26.5x

Single Polarization Broadband Parabolic Antenna

Key Features :

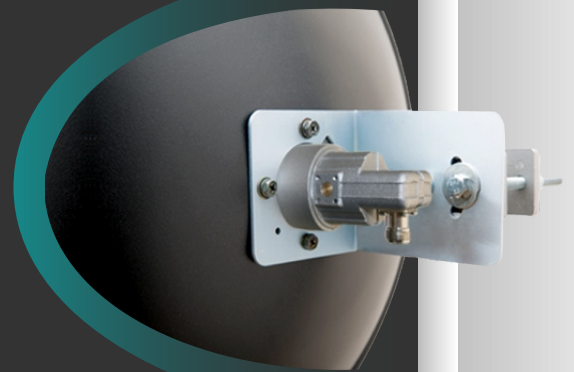
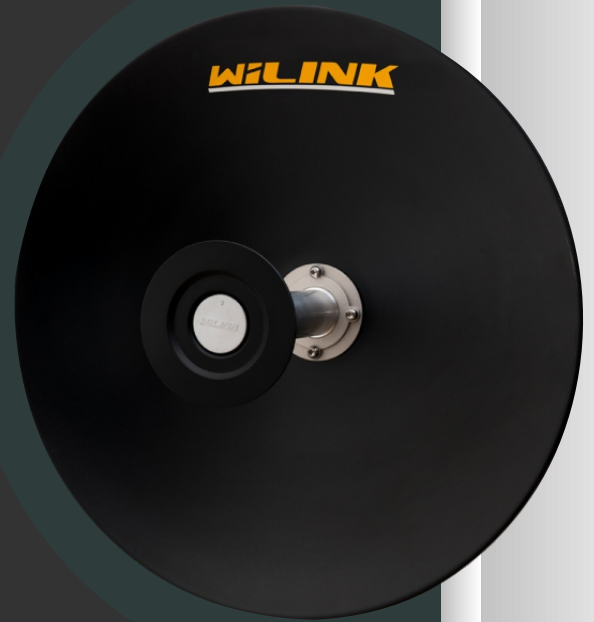
- Light weight
- Robust Structure
- Easy Installation
- Precise alignment

Applications :

- Commercial and military applications
- Point-to-point and point-to-multipoint topologies

Description :

WiLINK is a leading broadband antenna brand manufactured by Pionaria Ltd. for telecom, industrial and military applications with an emphasis on the 5GHz ISM band. Since their introduction in 2006, WiLINK antennas have undergone a continuous optimization process by a dedicated R&D team of highly qualified and experienced experts resulting in the production of a wide range of standard and high performance broadband antennas with best-in-class electromagnetic parameters.



SPA-26.5x

Single Polarization Broadband Parabolic Antenna

Electromagnetic Parameters

| | |
|---------------------|-----------------|
| Frequency Range | 4.8-6.2 GHz |
| Gain | 26.8 dBi |
| Polarization | Linear (V or H) |
| 3db Beamwidth | 8.1° |
| XPD | 27 dB |
| F/B Ratio | 37 dB |
| VSWR | 1.4:1 |
| Impedance | 50 Ω |
| Maximum Input Power | 100 W |
| Connector Type | N-Female |

Mechanical Parameters

| | |
|-----------------------------|------------------------------|
| Diameter | 44 cm |
| Weight | 2.8 kg |
| Shipping Dim. (L x W x H) | 47 x 47 x 25 cm ³ |
| Wind Load | 200 km/h |
| Dish Material | Aluminium Alloy |

SPA-26.5x-D

Dual Polarization Broadband Parabolic Antenna

Key Features :

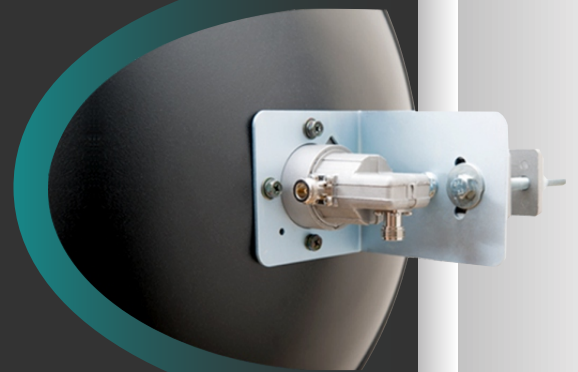
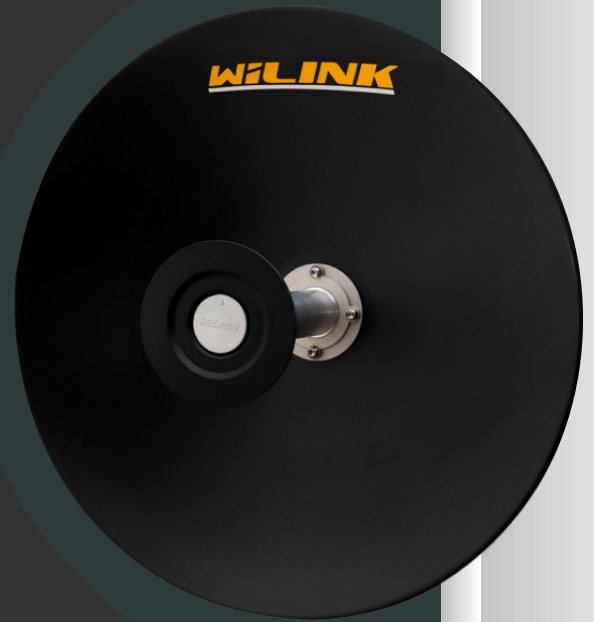
- Light weight
- Robust Structure
- Easy Installation
- Precise alignment

Applications :

- Commercial and military applications
- Point-to-point and point-to-multipoint topologies

Description :

WiLINK is a leading broadband antenna brand manufactured by Pionaria Ltd. for telecom, industrial and military applications with an emphasis on the 5GHz ISM band. Since their introduction in 2006, WiLINK antennas have undergone a continuous optimization process by a dedicated R&D team of highly qualified and experienced experts resulting in the production of a wide range of standard and high performance broadband antennas with best-in-class electromagnetic parameters.



SPA-26.5x-D

Dual Polarization Broadband Parabolic Antenna

Electromagnetic Parameters

| | |
|------------------------|--------------|
| Frequency Range | 4.8-6.2 GHz |
| Gain | 26.6 dBi |
| Polarization | Linear (V&H) |
| 3db Beamwidth | 8.1° |
| XPD | 27 dB |
| F/B Ratio | 37 dB |
| Port-To-Port Isolation | 38 dB |
| VSWR | 1.4:1 |
| Impedance | 50 Ω |
| Maximum Input Power | 100 W |
| Connector Type | N-Female |

Mechanical Parameters

| | |
|-----------------------------|------------------------------|
| Diameter | 44 cm |
| Weight | 2.8 kg |
| Shipping Dim. (L x W x H) | 47 x 47 x 25 cm ³ |
| Wind Load | 200 km/h |
| Dish Material | Aluminium Alloy |

SPA-27.5x

Single Polarization Broadband Parabolic Antenna

Key Features :

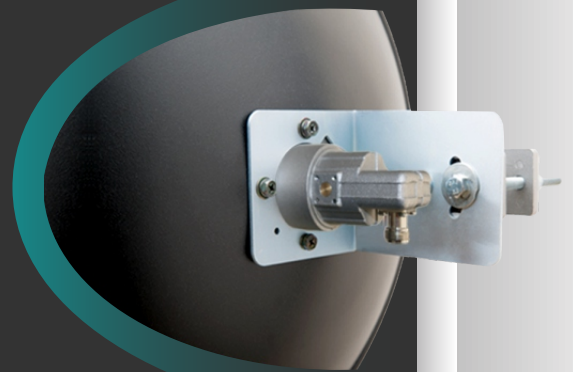
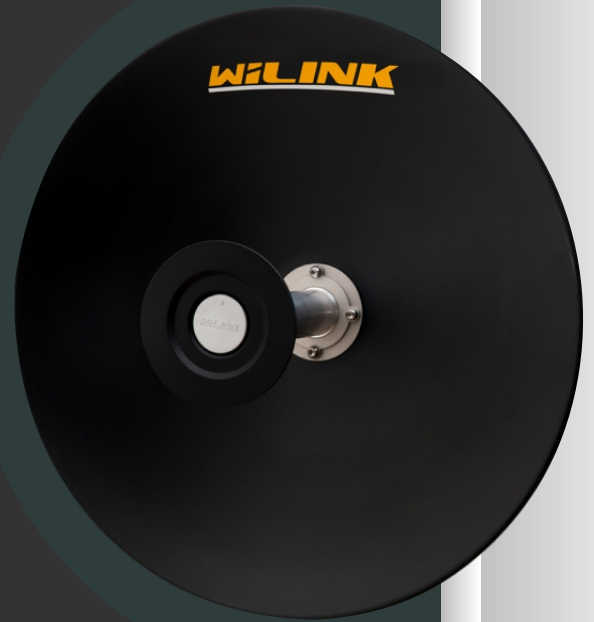
- Light weight
- Robust Structure
- Easy Installation
- Precise alignment

Applications :

- Commercial and military applications
- Point-to-point and point-to-multipoint topologies

Description :

WiLINK is a leading broadband antenna brand manufactured by Pionaria Ltd. for telecom, industrial and military applications with an emphasis on the 5GHz ISM band. Since their introduction in 2006, WiLINK antennas have undergone a continuous optimization process by a dedicated R&D team of highly qualified and experienced experts resulting in the production of a wide range of standard and high performance broadband antennas with best-in-class electromagnetic parameters.



SPA-27.5x

Single Polarization Broadband Parabolic Antenna

Electromagnetic Parameters

| | |
|---------------------|---------------|
| Frequency Range | 4.8-6.2 GHz |
| Gain | 27.0 dBi |
| Polarization | Linear (VorH) |
| 3db Beamwidth | 6.3° |
| XPD | 29 dB |
| F/B Ratio | 38 dB |
| VSWR | 1.4:1 |
| Impedance | 50 Ω |
| Maximum Input Power | 100 W |
| Connector Type | N-Female |

Mechanical Parameters

| | |
|---|--|
| Diameter | 54 cm |
| Weight | 3.2 kg |
| Shipping Dim. (L x W x H) two Antennas | 61 x 55 x 17 cm ³ 40.5 x 40.5 x 23.5 cm ³ |
| Wind Load | 200 km/h |
| Dish Material | Aluminium Alloy |

SPA-27.5x-D

Dual Polarization Broadband Parabolic Antenna

Key Features :

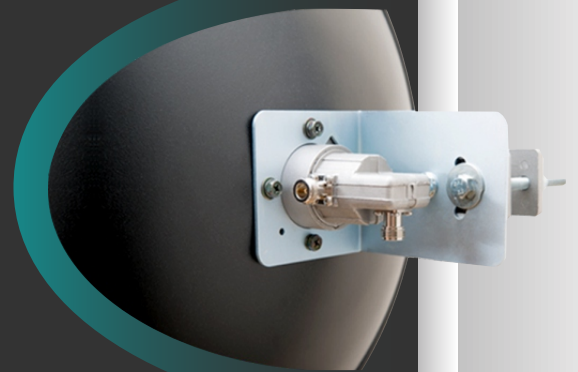
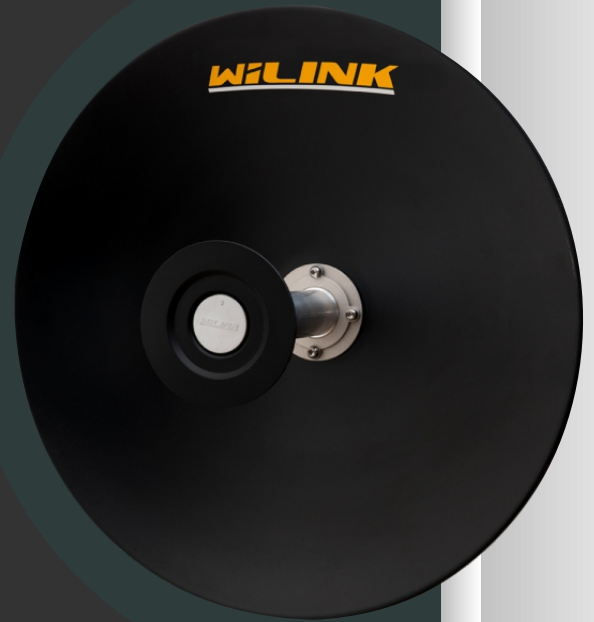
- Light weight
- Robust Structure
- Easy Installation
- Precise alignment

Applications :

- Commercial and military applications
- Point-to-point and point-to-multipoint topologies

Description :

WiLINK is a leading broadband antenna brand manufactured by Pionaria Ltd. for telecom, industrial and military applications with an emphasis on the 5GHz ISM band. Since their introduction in 2006, WiLINK antennas have undergone a continuous optimization process by a dedicated R&D team of highly qualified and experienced experts resulting in the production of a wide range of standard and high performance broadband antennas with best-in-class electromagnetic parameters.



SPA-27.5x-D

Dual Polarization Broadband Parabolic Antenna

Electromagnetic Parameters

| | |
|------------------------|--------------|
| Frequency Range | 4.8-6.2 GHz |
| Gain | 27.0 dBi |
| Polarization | Linear (V&H) |
| 3db Beamwidth | 6.3° |
| XPD | 29 dB |
| F/B Ratio | 38 dB |
| Port-To-Port Isolation | 40 dB |
| VSWR | 1.4:1 |
| Impedance | 50 Ω |
| Maximum Input Power | 100 W |
| Connector Type | N-Female |

Mechanical Parameters

| | |
|---|--|
| Diameter | 54 cm |
| Weight | 3.2 kg |
| Shipping Dim. (L x W x H) tow antennas | 61 x 55 x 17 cm ³ 40.5 x 40.5 x 23.5 cm ³ |
| Wind Load | 200 km/h |
| Dish Material | Aluminium Alloy |

SPA-29.5x

Single Polarization Broadband Parabolic Antenna

Key Features :

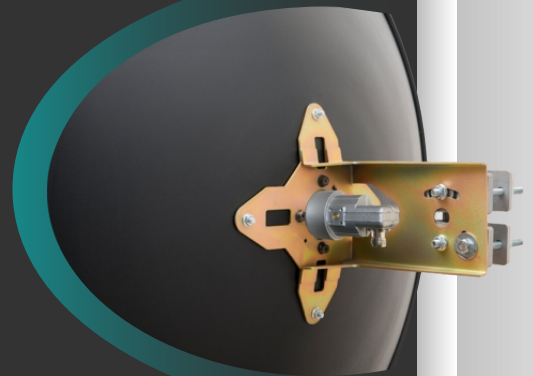
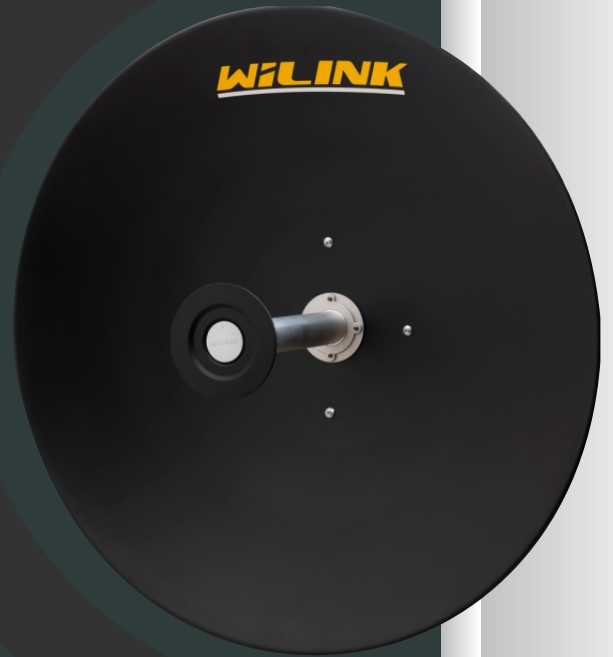
- Light weight
- Robust Structure
- Easy Installation
- Precise alignment

Applications :

- Commercial and military applications
- Point-to-point and point-to-multipoint topologies

Description :

WiLINK is a leading broadband antenna brand manufactured by Pionaria Ltd. for telecom, industrial and military applications with an emphasis on the 5GHz ISM band. Since their introduction in 2006, WiLINK antennas have undergone a continuous optimization process by a dedicated R&D team of highly qualified and experienced experts resulting in the production of a wide range of standard and high performance broadband antennas with best-in-class electromagnetic parameters.



SPA-29.5x-S

Single Polarization Broadband Parabolic Antenna

Electromagnetic Parameters

| | |
|---------------------|-----------------|
| Frequency Range | 4.8-6.2 GHz |
| Gain | 29.6 dBi |
| Polarization | Linear (V or H) |
| 3db Beamwidth | 5.2° |
| XPD | 30 dB |
| F/B Ratio | 40 dB |
| VSWR | 1.4:1 |
| Impedance | 50 Ω |
| Maximum Input Power | 100 W |
| Connector Type | N-Female |

Mechanical Parameters

| | |
|---|--|
| Diameter | 66cm |
| Weight | 4.2 kg |
| Shipping Dim. (L x W x H) two Antennas | 70 x 70 x 21 cm ³ 40.5 x 40.5 x 23.5 cm ³ |
| Wind Load | 200 km/h |
| Dish Material | Aluminium Alloy |

SPA-29.5x-D

Dual Polarization Broadband Parabolic Antenna

Key Features :

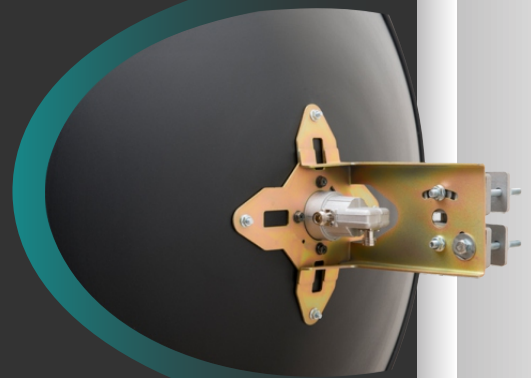
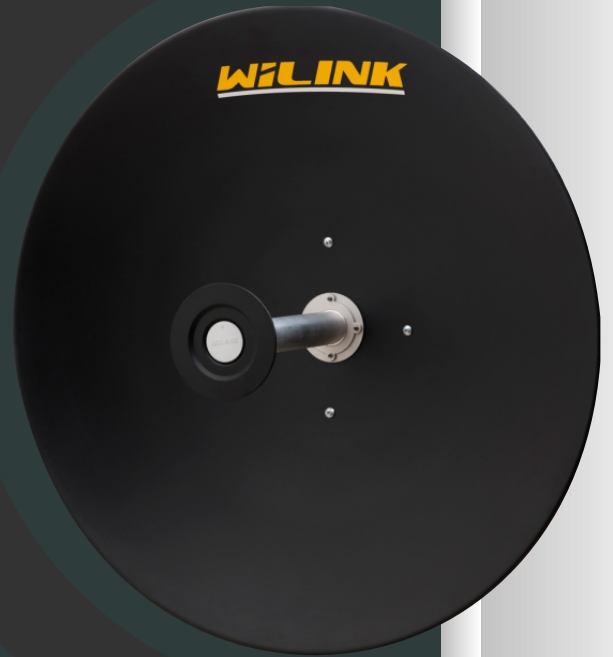
- Light weight
- Robust Structure
- Easy Installation
- Precise alignment

Applications :

- Commercial and military applications
- Point-to-point and point-to-multipoint topologies

Description :

WiLINK is a leading broadband antenna brand manufactured by Pionaria Ltd. for telecom, industrial and military applications with an emphasis on the 5GHz ISM band. Since their introduction in 2006, WiLINK antennas have undergone a continuous optimization process by a dedicated R&D team of highly qualified and experienced experts resulting in the production of a wide range of standard and high performance broadband antennas with best-in-class electromagnetic parameters.



SPA-29.5x-D

Dual Polarization Broadband Parabolic Antenna

Electromagnetic Parameters

| | |
|------------------------|--------------|
| Frequency Range | 4.8-6.2 GHz |
| Gain | 29.6dBi |
| Polarization | Linear (V&H) |
| 3db Beamwidth | 5.2° |
| XPD | 30 dB |
| F/B Ratio | 40 dB |
| Port-To-Port Isolation | 40 dB |
| VSWR | 1.4:1 |
| Impedance | 50 Ω |
| Maximum Input Power | 100 W |
| Connector Type | N-Female |

Mechanical Parameters

| | |
|---|--|
| Diameter | 66 cm |
| Weight | 4.2 kg |
| Shipping Dim. (L x W x H) tow antennas | 70 x 70 x 21 cm ³ 40.5 x 40.5 x 23.5 cm ³ |
| Wind Load | 200 km/h |
| Dish Material | Aluminium Alloy |

SPA-31.5x

Single Polarization Broadband Parabolic Antenna

Key Features :

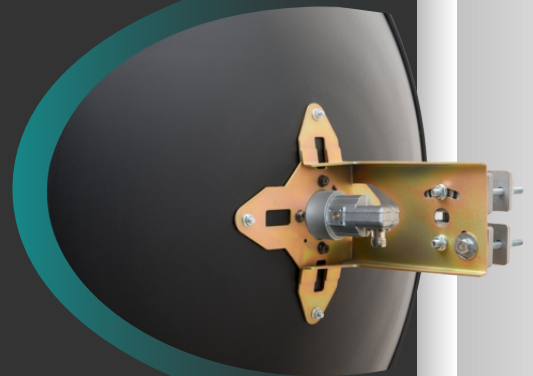
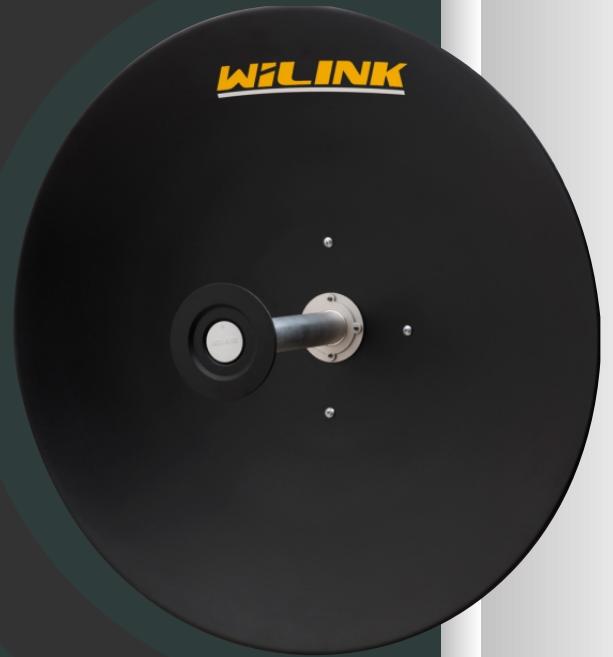
- Light weight
- Robust Structure
- Easy Installation
- Precise alignment

Applications :

- Commercial and military applications
- Point-to-point and point-to-multipoint topologies

Description :

WiLINK is a leading broadband antenna brand manufactured by Pionaria Ltd. for telecom, industrial and military applications with an emphasis on the 5GHz ISM band. Since their introduction in 2006, WiLINK antennas have undergone a continuous optimization process by a dedicated R&D team of highly qualified and experienced experts resulting in the production of a wide range of standard and high performance broadband antennas with best-in-class electromagnetic parameters.



SPA-31.5x

Single Polarization Broadband Parabolic Antenna

Electromagnetic Parameters

| | |
|---------------------|---------------|
| Frequency Range | 4.8-6.2 GHz |
| Gain | 31.4 dBi |
| Polarization | Linear (VorH) |
| 3db Beamwidth | 4.1° |
| XPD | 30 dB |
| F/B Ratio | 40 dB |
| VSWR | 1.4:1 |
| Impedance | 50 Ω |
| Maximum Input Power | 100 W |
| Connector Type | N-Female |

Mechanical Parameters

| | |
|---|--|
| Diameter | 80 cm |
| Weight | 6.5 kg |
| Shipping Dim. (L x W x H) two Antennas | 87 x 87 x 21 cm ³ 40.5 x 40.5 x 23.5 cm ³ |
| Wind Load | 200 km/h |
| Dish Material | Aluminium Alloy |

SPA-31.5x-D

Dual Polarization Broadband Parabolic Antenna

Key Features :

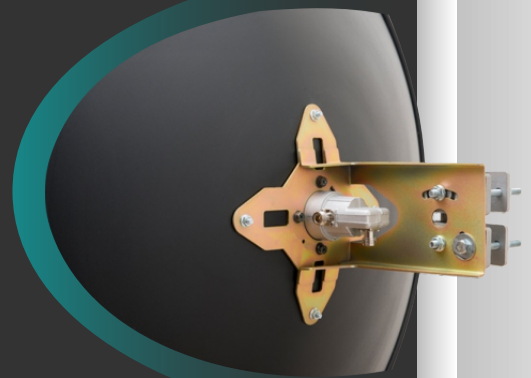
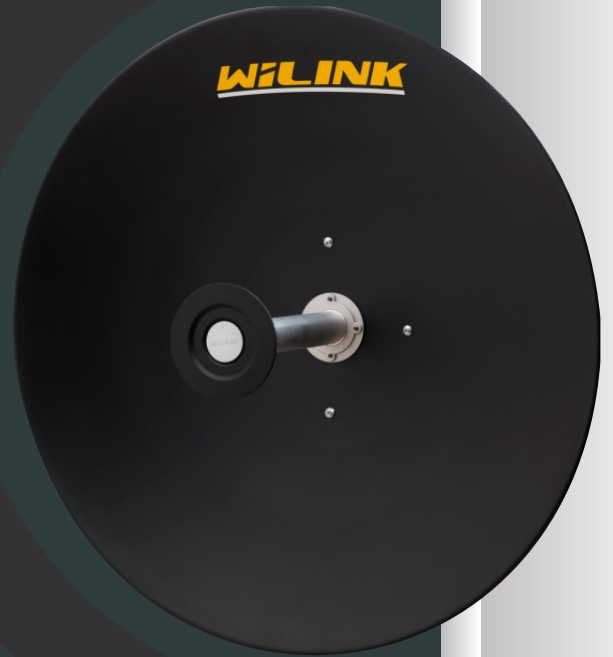
- Light weight
- Robust Structure
- Easy Installation
- Precise alignment

Applications :

- Commercial and military applications
- Point-to-point and point-to-multipoint topologies

Description :

WiLINK is a leading broadband antenna brand manufactured by Pionaria Ltd. for telecom, industrial and military applications with an emphasis on the 5GHz ISM band. Since their introduction in 2006, WiLINK antennas have undergone a continuous optimization process by a dedicated R&D team of highly qualified and experienced experts resulting in the production of a wide range of standard and high performance broadband antennas with best-in-class electromagnetic parameters.



SPA-31.5x-D

Dual Polarization Broadband Parabolic Antenna

Electromagnetic Parameters

| | |
|------------------------|--------------|
| Frequency Range | 4.8-6.2 GHz |
| Gain | 31.4 dBi |
| Polarization | Linear (V&H) |
| 3db Beamwidth | 4.1° |
| XPD | 30 dB |
| F/B Ratio | 40 dB |
| Port-To-Port Isolation | 40 dB |
| VSWR | 1.4:1 |
| Impedance | 50 Ω |
| Maximum Input Power | 100 W |
| Connector Type | N-Female |

Mechanical Parameters

| | |
|---|--|
| Diameter | 80 cm |
| Weight | 6.5 kg |
| Shipping Dim. (L x W x H) tow antennas | 87 x 87 x 21 cm ³ 40.5 x 40.5 x 23.5 cm ³ |
| Wind Load | 200 km/h |
| Dish Material | Aluminium Alloy |

SPA-32.5x

Single Polarization Broadband Parabolic Antenna

Key Features :

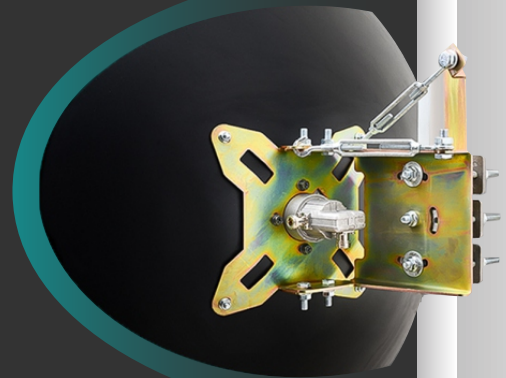
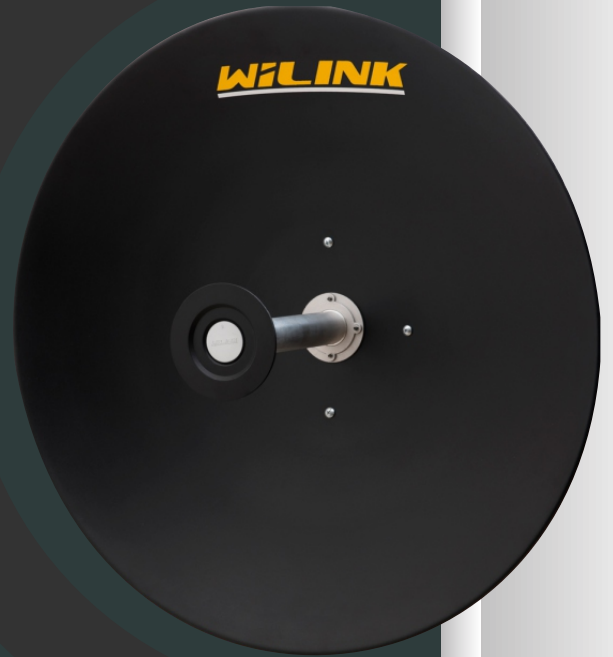
- Light weight
- Robust Structure
- Easy Installation
- Precise alignment

Applications :

- Commercial and military applications
- Point-to-point and point-to-multipoint topologies

Description :

WiLINK is a leading broadband antenna brand manufactured by Pionaria Ltd. for telecom, industrial and military applications with an emphasis on the 5GHz ISM band. Since their introduction in 2006, WiLINK antennas have undergone a continuous optimization process by a dedicated R&D team of highly qualified and experienced experts resulting in the production of a wide range of standard and high performance broadband antennas with best-in-class electromagnetic parameters.



SPA-32.5x

Single Polarization Broadband Parabolic Antenna

Electromagnetic Parameters

| | |
|---------------------|-----------------|
| Frequency Range | 4.8-6.2 GHz |
| Gain | 32.5 dBi |
| Polarization | Linear (V or H) |
| 3db Beamwidth | 3.9° |
| XPD | 30 dB |
| F/B Ratio | 44 dB |
| VSWR | 1.4:1 |
| Impedance | 50 Ω |
| Maximum Input Power | 100 W |
| Connector Type | N-Female |

Mechanical Parameters

| | |
|---|--|
| Diameter | 86 cm |
| Weight | 7.3 kg |
| Shipping Dim. (L x W x H) two Antennas | 94 x 94 x 25 cm ³ 40.5 x 40.5 x 23.5 cm ³ |
| Wind Load | 200 km/h |
| Dish Material | Aluminium Alloy |

SPA-32.5x-D

Dual Polarization Broadband Parabolic Antenna

Key Features :

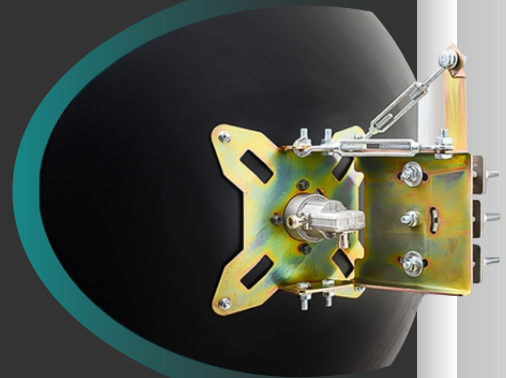
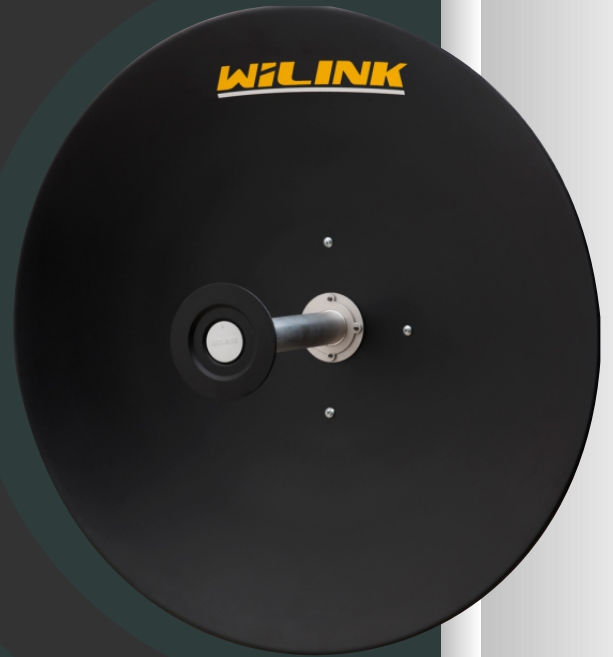
- Light weight
- Robust Structure
- Easy Installation
- Precise alignment

Applications :

- Commercial and military applications
- Point-to-point and point-to-multipoint topologies

Description :

WiLINK is a leading broadband antenna brand manufactured by Pionaria Ltd. for telecom, industrial and military applications with an emphasis on the 5GHz ISM band. Since their introduction in 2006, WiLINK antennas have undergone a continuous optimization process by a dedicated R&D team of highly qualified and experienced experts resulting in the production of a wide range of standard and high performance broadband antennas with best-in-class electromagnetic parameters.



SPA-32.5x-D

Dual Polarization Broadband Parabolic Antenna

Electromagnetic Parameters

| | |
|------------------------|--------------|
| Frequency Range | 4.8-6.2 GHz |
| Gain | 32.5 dBi |
| Polarization | Linear (V&H) |
| 3db Beamwidth | 3.9° |
| XPD | 30 dB |
| F/B Ratio | 44 dB |
| Port-To-Port Isolation | 40 dB |
| VSWR | 1.4:1 |
| Impedance | 50 Ω |
| Maximum Input Power | 100 W |
| Connector Type | N-Female |

Mechanical Parameters

| | |
|---|--|
| Diameter | 86 cm |
| Weight | 7.3 kg |
| Shipping Dim. (L x W x H) tow antennas | 94 x 94 x 25 cm ³ 40.5 x 40.5 x 23.5 cm ³ |
| Wind Load | 200 km/h |
| Dish Material | Aluminium Alloy |

SPA-34.5x

Single Polarization Broadband Parabolic Antenna

Key Features :

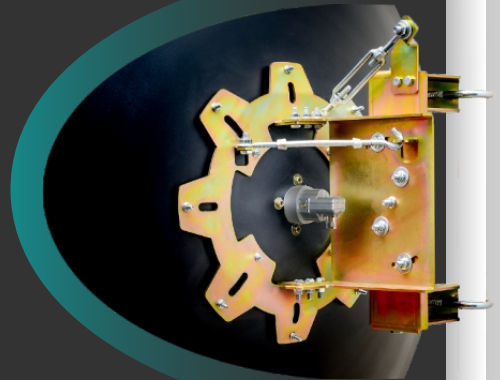
- Light weight
- Robust Structure
- Easy Installation
- Precise alignment

Applications :

- Commercial and military applications
- Point-to-point and point-to-multipoint topologies

Description :

WiLINK is a leading broadband antenna brand manufactured by Pionaria Ltd. for telecom, industrial and military applications with an emphasis on the 5GHz ISM band. Since their introduction in 2006, WiLINK antennas have undergone a continuous optimization process by a dedicated R&D team of highly qualified and experienced experts resulting in the production of a wide range of standard and high performance broadband antennas with best-in-class electromagnetic parameters.



SPA-34.5x

Single Polarization Broadband Parabolic Antenna

Electromagnetic Parameters

| | |
|---------------------|-----------------|
| Frequency Range | 4.8-6.2 GHz |
| Gain | 34.1 dBi |
| Polarization | Linear (V or H) |
| 3db Beamwidth | 3.0° |
| XPD | 31 dB |
| F/B Ratio | 47 dB |
| VSWR | 1.4:1 |
| Impedance | 50 Ω |
| Maximum Input Power | 100 W |
| Connector Type | N-Female |

Mechanical Parameters

| | |
|-----------------------------|------------------------------------|
| Diameter | 110 cm |
| Weight | 21 kg |
| Shipping Dim. (L x W x H) | 116.5 x 116.5 x 60 cm ³ |
| Wind Load | 200 km/h |
| Dish Material | Aluminium Alloy |

SPA-34.5x-D

Dual Polarization Broadband Parabolic Antenna

Key Features :

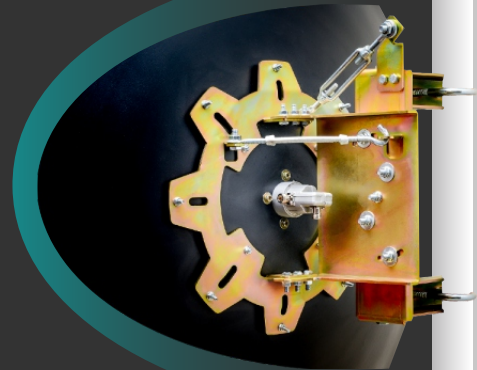
- Light weight
- Robust Structure
- Easy Installation
- Precise alignment

Applications :

- Commercial and military applications
- Point-to-point and point-to-multipoint topologies

Description :

WiLINK is a leading broadband antenna brand manufactured by Pionaria Ltd. for telecom, industrial and military applications with an emphasis on the 5GHz ISM band. Since their introduction in 2006, WiLINK antennas have undergone a continuous optimization process by a dedicated R&D team of highly qualified and experienced experts resulting in the production of a wide range of standard and high performance broadband antennas with best-in-class electromagnetic parameters.



SPA-34.5x-D

Dual Polarization Broadband Parabolic Antenna

Electromagnetic Parameters

| | |
|------------------------|--------------|
| Frequency Range | 4.8-6.2 GHz |
| Gain | 34 dBi |
| Polarization | Linear (V&H) |
| 3db Beamwidth | 3.0° |
| XPD | 31 dB |
| F/B Ratio | 47 dB |
| Port-To-Port Isolation | 40 dB |
| VSWR | 1.4:1 |
| Impedance | 50 Ω |
| Maximum Input Power | 100 W |
| Connector Type | N-Female |

Mechanical Parameters

| | |
|-----------------------------|------------------------------------|
| Diameter | 110 cm |
| Weight | 21 kg |
| Shipping Dim. (L x W x H) | 116.5 x 116.5 x 60 cm ³ |
| Wind Load | 200 km/h |
| Dish Material | Aluminium Alloy |