

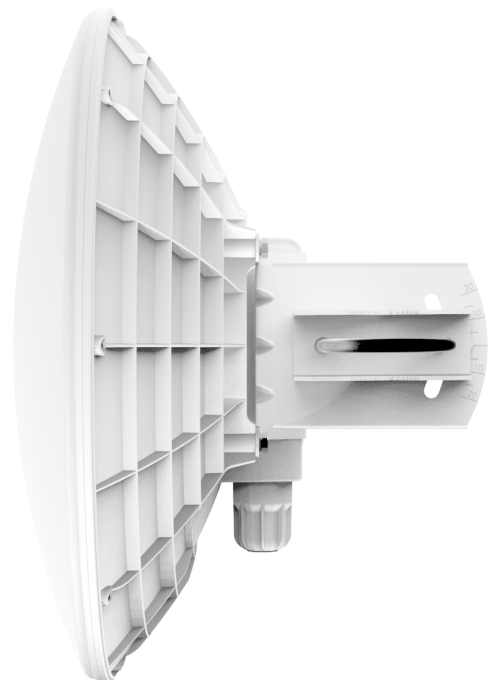
DynaDish 5

The DynaDish 5 is a new 802.11ac outdoor device with an integrated antenna. Compact in its design, it is a simple and completely integrated product with everything you need to quickly install a reliable point to point link.

The DynaDish 5 is powered by a new 720 MHz CPU from Qualcomm.

New 802.11ac outdoor device

- ideal for long distance point-to-point links
- 5 GHz dual chain board integrated into 25 dBi dish antenna with 8 degree beam width
- 720 Mhz CPU 300 MHz DDR2
- one Gigabit Ethernet port



The antenna is a 8 degree 25 dBi dish, and it includes a precise alignment mount, ideal for long range point to point wireless links.

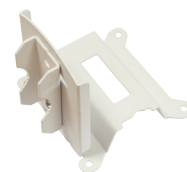
Specifications

Product code	RBDynaDishG-5HacD
CPU	QCA9557 720 MHz
Size of RAM	128 MB
10/100/1000 Ethernet ports	1
Wireless	Built-in 5 GHz 802.11ac, dual-chain
Frequency range	4920 - 6100 MHz (Operating range limited by Country Regulations)
Antenna gain	25 dBi
Antenna beam width	8°
Wireless chip model	QCA9892
Wireless regulations	Specific frequency range may be limited by country regulations
Port to port isolation	23 db
Return loss	< 15 db
VSWR	1.5
PoE in	Yes
Supported input voltage	11V - 60V passive PoE or 802.3af/at with unshielded cable
Voltage Monitor	Yes
PCB temperature monitor	Yes
CPU temperature monitor	No
Dimensions	Ø 404 mm, height 175 mm (without mount)
License level	3
Operating System	RouterOS
Max Power consumption	9 W
Supported channels	20/40/80 MHz

Included



24 V 0.8 A power adapter



Precision mount



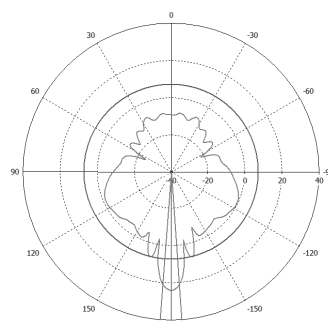
U Kit



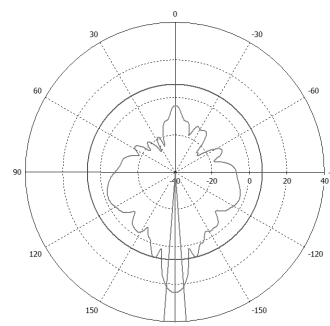
Gigabit PoE injector

Wireless specifications

RATE	Tx (dBm)	Rx (dBm)
6MBit/s	31	-96
54MBit/s	28	-81
MCS0	30	-96
MCS7	27	-77
MCS9	22	-72



Horizontal polarization



Vertical polarization

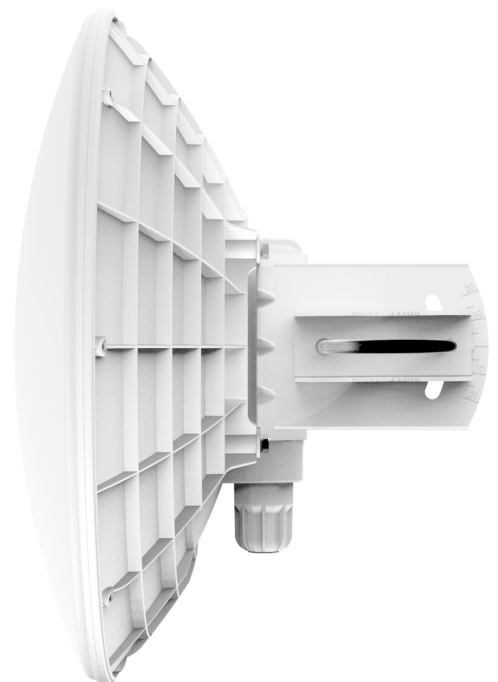
DynaDish 6

The Dynadish 6 uses the same effective antenna design and enclosure as our successful 5 GHz model, but this new device operates in the licensed 6GHz frequency. This means less interference than the often saturated 5 GHz frequencies for higher speed and more reach. By operating above the most popular WiFi frequencies you are now able to build your wireless links from busy towers without suffering problems with noise.

It is a simple and completely integrated product with everything you need to quickly install a reliable point to point link.

Ideal for long distance point-to-point links

- 5.9 - 6.4 GHz dual chain board integrated into a 25 dBi dish antenna
- precision mounting kit included
- one Gigabit Ethernet port



The antenna is a 25 dBi dish, and it includes a precise alignment mount, ideal for long range (up to 25 km at full speed) point to point wireless links.

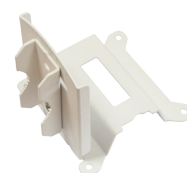
Specifications

Product code	RBDynaDishG-6HnD
CPU	AR9344 600 MHz
Size of RAM	64 MB
10/100/1000 Ethernet ports	1
Wireless	Built-in 6 GHz 802.11a/n, dual-chain
Frequency range	5.9 - 6.4 GHz
Antenna gain	25 dBi
Antenna beam width	Horizontal 7.5°, vertical 7.7° @6.1 GHz
Wireless chip model	AR9344
Wireless regulations	Specific frequency range may be limited by country regulations
PoE in	Yes
Supported input voltage	12V - 30V passive PoE
Voltage Monitor	Yes
PCB temperature monitor	Yes
CPU temperature monitor	No
Dimensions	Ø 404 mm, height 175 mm (without mount)
Operating temperature	-40 to 70° C
License level	4
Operating System	RouterOS
Max Power consumption	10 W
Supported channels	20/40 MHz

Included



24 V 0.8 A power adapter



Precision mount



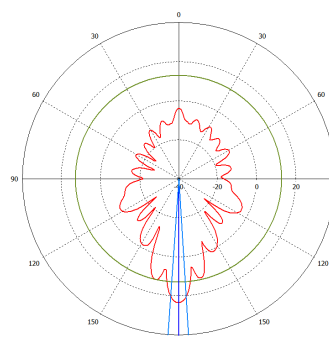
U Kit



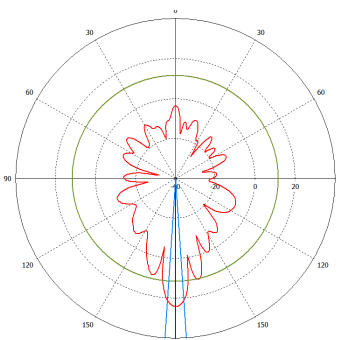
Gigabit PoE injector

Wireless specifications

RATE	Tx (dBm)	Rx (dBm)
6MBit/s	30	-93
54MBit/s	27	-80
MCS0	29	-93
MCS7	24	-76



Horizontal polarization



Vertical polarization