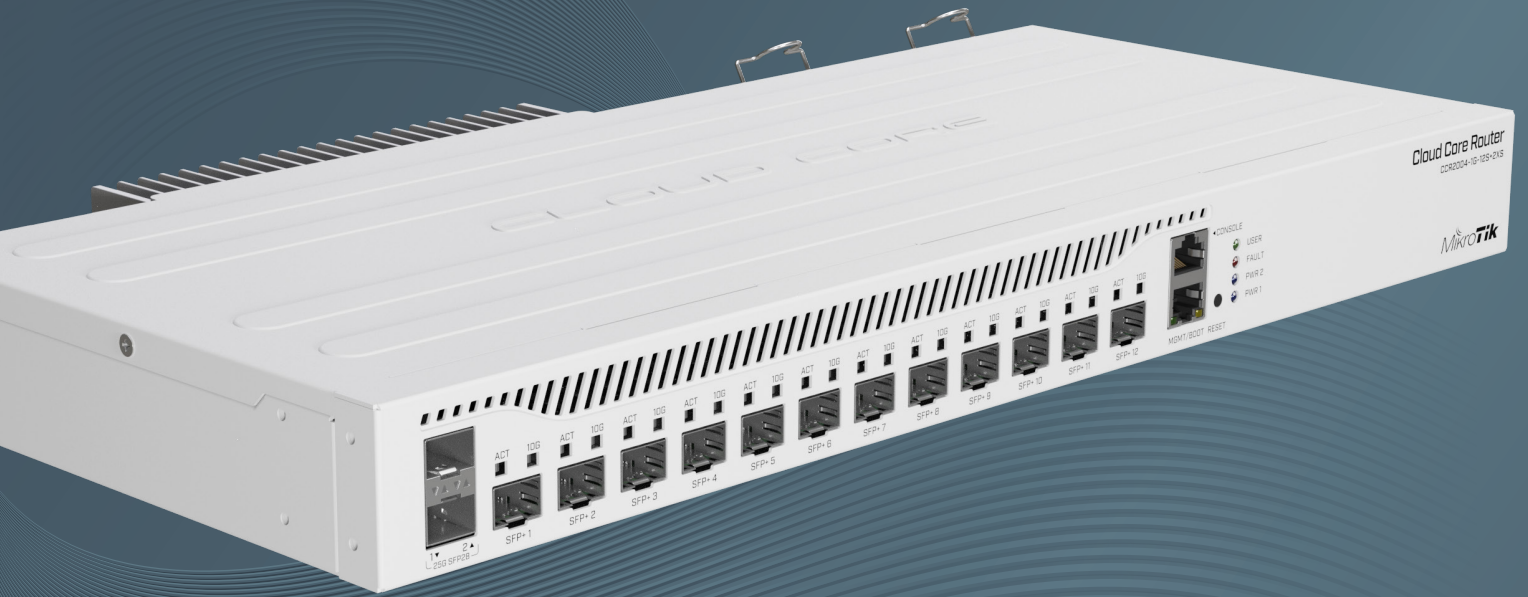


MikroTik

FAMCO  
هایپر صنعت

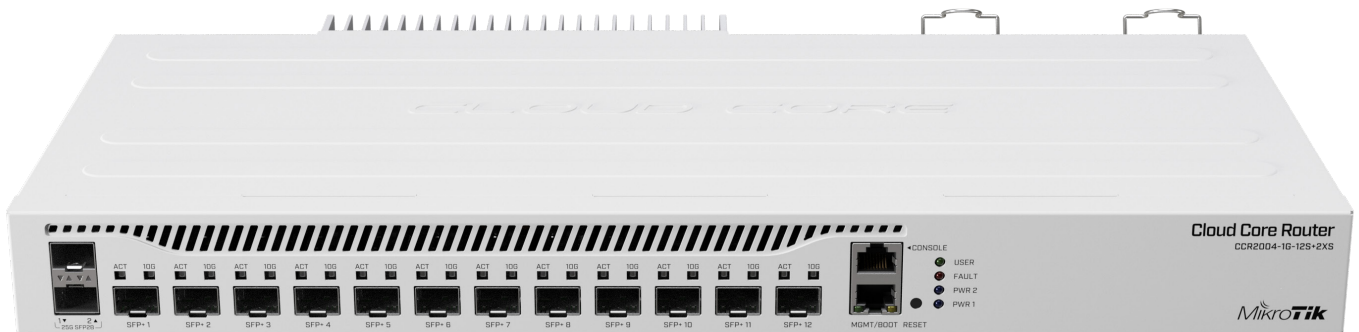


---

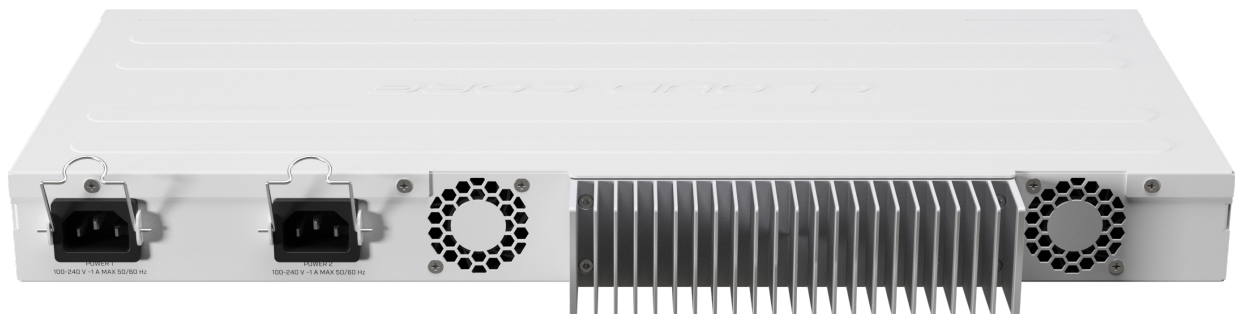
## CCR2004-1G-12S+2XS

The Connectivity Router - your best companion when it comes to SFP+ and SFP28 management! 10 and 25 Gbps ports in a single device to make your life easier.

The “Improvise. Adapt. Overcome.” mindset can be very helpful, but sometimes you simply need a device that works and solves the problem without additional tinkering. The CCR2004-1G-12S+2XS does just that – forget about all connectivity troubles and expand your setup in any way you please.



Connectivity? You got it! This handy router features 12 x 10G SFP+ and 2 x 25G SFP28 ports.



This is our router with the most powerful single-core performance so far. It provides incredible results in single tunnel (up to 3.4 Gbps) and BGP feed processing.

Be prepared for anything: 10G, 40G and now 25G! Paired with such MikroTik multiport products as CRS317-1G-16S+RM, CRS312-4C+8XG-RM and CRS326-24S+2Q+RM, your networking setup will know no bounds. Performance-wise, CCR2004-1G-12S+2XS is on par with the renowned CCR1009/CCR1016 routers. And with dual redundant power supply you can forget about unexpected downtime! With its elaborate port configuration, the new CCR2004-1G-12S+2XS is the perfect addition to any professional networking arsenal – it will save you tons of time in some tricky situations!

## Specifications

Product code	CCR2004-1G-12S+2XS
CPU	AL32400 1700 MHz
CPU core count	4
Size of RAM	RouterOS v6 1792MB ECC / RouterOS v7 4GB ECC
RAM type	DDR4
Storage	128 MB, NAND
Number of 1G Ethernet ports	1
Number of 10G SFP+ ports	12
Number of 25G SFP28 ports	2
Operating system	RouterOS
Router license level	6
Supported input voltage	AC power supply 100 - 240 V
Number of AC inputs	2
Dimensions	443 x 224 x 44 mm
Operating temperature	-20°C to +60°C tested
Max power consumption	49 W

## Included parts



2 IEC  
cords



Rackmount  
bracket white



Fastening set for  
rackmount case

## IPsec test results

CCR2004-1G-12S+2XS		Hardware accelerated IPsec throughput test					
Mode	Configuration	1400 byte		512 byte		64 byte	
		kpps	Mbps	kpps	Mbps	kpps	Mbps
Single tunnel	AES-128-CBC + SHA1	303.6	3400.3	353.6	1448.3	354.7	181.6
256 tunnels	AES-128-CBC + SHA1	302.0	3382.4	378.8	1551.6	376.4	192.7
256 tunnels	AES-128-CBC + SHA256	302.0	3382.4	378.8	1551.6	376.4	192.7
256 tunnels	AES-256-CBC + SHA1	300.3	3363.4	374.5	1534.0	374.5	191.7
256 tunnels	AES-256-CBC + SHA256	300.3	3363.4	374.5	1534.0	374.5	191.7