

Huckepack

Rotary Vane Vacuum Pumps
HO 0429 - 0441 F



For decades, Huckepack HO oil-lubricated rotary vane vacuum pumps have established themselves in the market and demonstrated their robustness and operational reliability under toughest conditions. All four sizes have a two-stage design. The fresh oil lubrication also enables the process of corrosive gases or vapours to be conveyed without any difficulty.

Optimum temperature control

Huckepack HO rotary vane vacuum pumps are equipped with a recirculated water cooling system as standard. The operating temperature can be kept at an optimum level thanks to the cooling channels integrated into the housing. A version with direct water cooling is also available.

Application-oriented

By choosing the right cooling system and accessories from our extensive range, Huckepack HO rotary vane vacuum pumps can be optimally adjusted to suit any process.

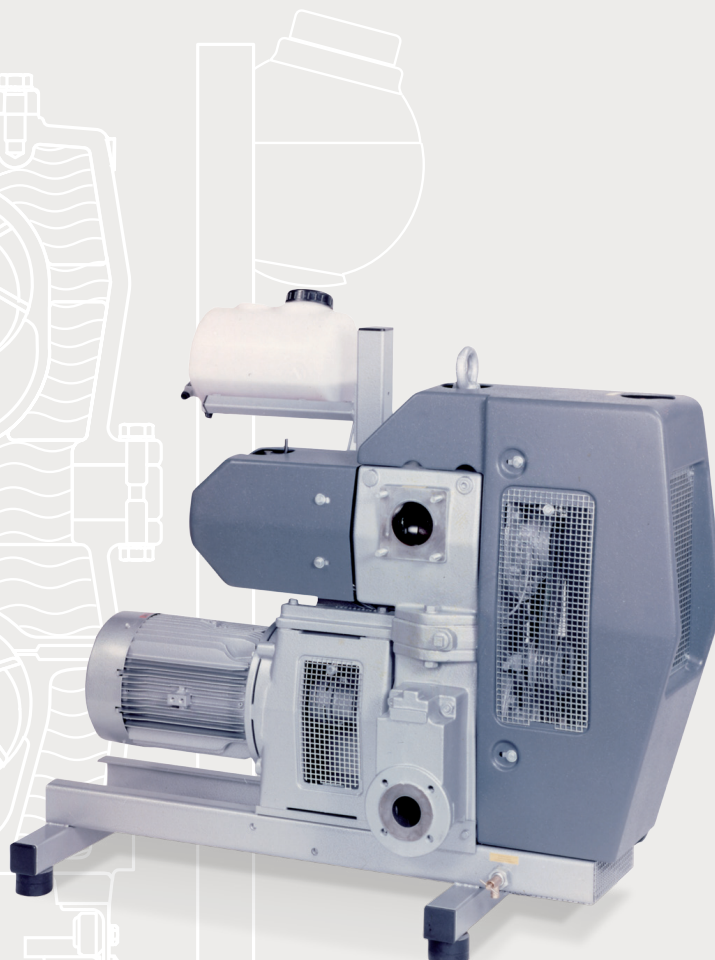
It is also possible to select a process-compatible lubricant, as there is a range of liquids available for flushing the vacuum pumps once the process has finished. The flushing process can be carried out automatically (via controls) or manually.

Service-friendly

Huckepack HO two-stage rotary vane vacuum pumps are easy to maintain thanks to their modular design. A stage can be replaced with very little effort. The unit is driven by a directly flange-mounted standard electric motor, efficiency class IE2.



**Huckepack – the robust
and proven solution
for difficult applications.**



Huckepack

Rotary Vane Vacuum Pumps
HO 0429 - 0441 F



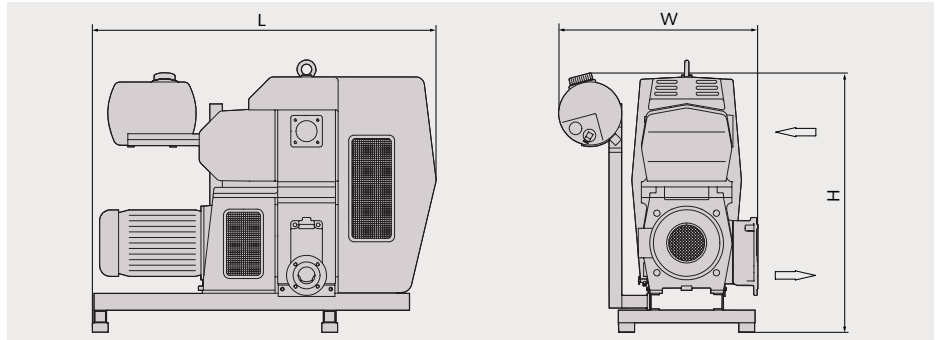
Technical specifications

The Huckepack two-stage rotary vane vacuum pumps are specifically designed for particularly complex processes in the chemical and pharmaceutical industry. They are almost perfectly resistant to aggressive substances thanks to their perfectly coordinated materials. The carbon fibre composite vanes developed specially for this purpose have emergency running properties which guarantee operational safety and a high vacuum performance even with insufficient lubrication. For use in potentially explosive environments, Huckepack rotary vane vacuum pumps are also available in an ATEX version with an EC type-examination certificate in accordance with Directive 94/9/EC: ExII 2G IIB T3/T4 (i/o)

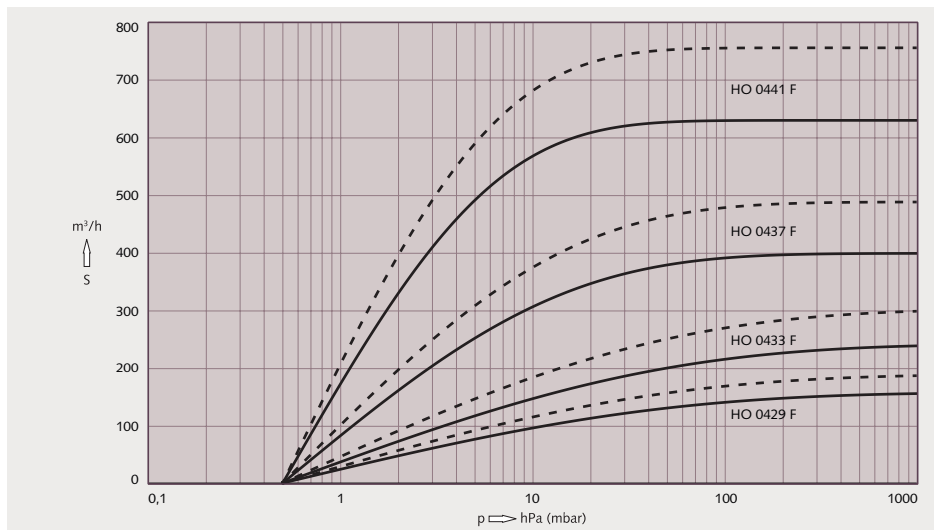
Accessories/technical options

- Lubricant separator
- Various inlet filters
- Flushing device, manual and automatic
- Exhaust silencer
- Monitoring and safety devices
- Controls

Huckepack HO 0429 - 0441 F



Pumping speed Air at 20 °C. Tolerance: ± 10% — 50 Hz - - - - 60 Hz



Technical Data			HO 0429 F	HO 0433 F	HO 0437 F	HO 0441 F
Nominal pumping speed	50 Hz / 60 Hz	m ³ /h	160 / 190	250 / 300	400 / 480	630 / 760
Ultimate pressure	50 Hz / 60 Hz	hPa (mbar)	0.5	0.5	0.5	0.5
Nominal motor rating	50 Hz / 60 Hz	kW	5.5 / 7.5	7.5 / 9.2	11.0 / 15.0	15.0 / 18.5
Nominal motor speed	50 Hz / 60 Hz	min ⁻¹	1500 / 1800	1500 / 1800	1000 / 1200	1000 / 1200
Noise level (ISO 2151)	50 Hz / 60 Hz	dB(A)	72	73	73	74
Weight approx.		kg	380	420	920	980
Dimensions	L x W x H	mm	1320 x 740 x 1160	1320 x 740 x 1160	1640 x 950 x 1240	1640 x 950 x 1240
Gas inlet / outlet		DN	80 / 50	80 / 50	80 / 80	80 / 80

Busch Vacuum FZE

A-3/71, Sharjah Airport International Free zone (SAIF- Zone) | P.B.No: 121855, Sharjah | Phone +971 06 5529 174 | abhishek.sharma@busch.ae | www.busch.ae

Argentina Australia Austria Belgium Brazil Canada Chile China Czech Republic Denmark Finland France Germany Hungary India Ireland Israel Italy Japan Korea Malaysia Mexico New Zealand Netherlands Norway Poland Portugal Russia Singapore South Africa Spain Sweden Switzerland Taiwan Thailand Turkey United Arab Emirates United Kingdom USA

Technical data is subject to change. Created in Germany 06/19